

The logo for The Public Theatre is prominently displayed on the left side of the image. It features the word "PUBLIC" in large, bold, block letters with a geometric design using shades of red, orange, and pink. The word "the" is written in a smaller, white, lowercase script font to the left of "PUBLIC". Below "PUBLIC", the word "THEATRE" is written in a tall, white, condensed, sans-serif font. The background of the entire image is a photograph of the interior of a theater, showing rows of empty, dark-colored seats stretching towards a stage area in the distance.

# *the* PUBLIC THEATRE

**PERFORMANCE! 2021-22**

A Playbill for The Public Theatre and Maine Music Society

A close-up of a silver mesh microphone head on a red handle, positioned on the right side of the frame. The background is dark with out-of-focus orange and yellow light circles (bokeh).

# Sit back, relax, and enjoy the show!

At Androscoggin, we understand and appreciate the joy performers bring to the people in our communities and are proud to support the arts.

Member FDIC

 **Androscoggin  
Bank**

A Banking Force For Good |



[back to Directory Listing](#)

# THE Maine Music Society

2021-2022 Season

Dr. Richard Nickerson  
ARTISTIC DIRECTOR

SEASON SPONSORS  
Hardy, Wolf & Downing  
Ladd Foundation



Saturday, December 11 • 7:30pm  
Sunday, December 12 • 3:00pm

EVENT CO-SPONSORS



**GREATEST HITS**  
OF THE PAST  
**400 YEARS**

Saturday, March 26 • 7:30pm  
Sunday, March 27 • 3:00pm

EVENT  
SPONSOR

PLATZ ASSOCIATES



EVENT  
CO-SPONSORS



Saturday, May 14 • 7:30pm  
Sunday, May 15 • 3:00pm

EVENT SPONSORS

Sun Journal



EVENT  
CO-SPONSOR

ANDRUCKI & KING  
ATTORNEYS AT LAW

All concerts at Gendron Franco Center, Lewiston  
For tickets call 333-3386 or visit [mainemusicsociety.org](http://mainemusicsociety.org)



# Roy I Snow, Inc.

ELECTRICAL CONTRACTORS

Commercial Residential Industrial

Serving Maine since 1947 RoySnow.com 207.782.3734



LEE AUTO MALL  
IS PLEASED  
TO SUPPORT  
THE ARTS.

**Lee**AutoMall



**LEEisforMe.**

Find  
Us:



at LeeAutoMalls



# the PUBLIC THEATRE

2021-22

*Video on Demand performances also available*

## Middletown

**Oct 15 - 24** by Dan Clancy

This joyful, funny and heartfelt new play tells the story of two couples who've been friends since their children's first day of kindergarten. Thirty-three years later they reminisce about the highs, lows and in-betweens of their shared experiences, reminding us how friends make the good times better and the hard times easier.

## A Very Ida Christmas

**Dec 10, 11, 12** by Susan Poulin

Get ready for the funniest holiday show in Maine! It's Christmas in Mahoosuc Mills, and Ida's holiday spirit is so bright it could light up a Xmas tree. Banish your humbugs and laugh along with Maine's favorite "Woman who Runs with the Moose!"

## Dancing Lessons

**Mar 11 - 20** by Mark St. Germain

An injured dancer is thrown for a loop when a geoscientist unexpectedly knocks on her door asking for a dance lesson. These mis-matched partners soon embark on a series of funny and surprisingly poignant dance lessons that lead both of them out of their comfort zones in this unpredictable romantic comedy.

## Screwball Comedy

**April 29 - May 8** by Norm Foster

Imagine *His Girl Friday* meets *The Carol Burnett Show* in this fast-paced and hilarious nod to the Hollywood comedies of the '30s and '40s. Filled with snappy banter and classic characters, this zany comedy will keep you laughing from start to finish.

## Be Here Now

**Jun 17 - 26** by Deborah Zoe Laufer

A pessimistic professor of nihilism develops a dangerous medical condition with a side effect that turns her into a happy, likable, believer in love. But what if curing her condition will return her to misery? This wise and quirky comedy asks -- is happiness a choice or a pre-existing condition?



[thepublictheatre.org](http://thepublictheatre.org)

**782-3200** 31 Maple St, Lewiston

*Come PLAY with us!*

# Plan **YOUR** Franco Center event today!

## Performances



Conferences  
Graduations  
Concerts

Corporate Parties  
Celebrations of Life  
Weddings

Retirements  
Birthdays  
Showers

## Events



*For Performances - [production@francocenter.org](mailto:production@francocenter.org)*

*For Events - [events@francocenter.org](mailto:events@francocenter.org)*

*or Call: 207-783-1585*



(207) 783-1585 \* [FRANCOCENTER.ORG](http://FRANCOCENTER.ORG) \* 46 CEDAR ST., LEWISTON

# MIDCOAST SYMPHONY ORCHESTRA

2021 - 2022 SEASON at the GENDRON FRANCO CENTER

## Welcome Back!

Saturday, October 23, 2021 • 7 p.m.

Audience favorite **George Lopez** returns as piano soloist.

Fanfarria

Lyric for Strings

Pines of Rome

Piano Concerto No. 5, "Emperor"



Tania León

George Walker

Ottorino Respighi

Ludwig van Beethoven

## '70s Extravaganza Classical Night Fever



Not Included in Season Ticket Purchase

Saturday, June 4, 2022  
7 p.m.

MSO teams up with **Motor Booty Affair**, Maine's own 70's disco/funk tribute band. This world-class performance transports you on a journey through some of the best hits of the 1970's.

## A New World

Saturday, January 15, 2022 • 7 p.m.

Our soloist, **Anne McKee**, is the 2020 winner of MSO's Judith Elser Concerto Competition.

Voices Shouting Out

Rowing in Eden

Violin Concerto, I – *Allegro non troppo*

Symphony No. 9 – "From the New World"

Nkeiru Okoye

Philip Carlsen

Johannes Brahms

Antonín Dvořák



## Family Classics

Saturday, March 19, 2022 • 7 p.m.

The Star-Spangled Banner  
Banner

Hornpipe from Water Music

Light Cavalry Overture

Peer Gynt Suite No.1

Star and Stripes Forever

... And More!

Francis Scott Key & John Stafford Smith

Jessie Montgomery

George Frideric Handel

Franz von Suppé

Edvard Grieg

John Philip Sousa

## Conductors Galore

Saturday, May 21, 2022 • 7 p.m.

We present our own **Rohan Smith** (right) in partnership with guest conductor, **Jinwook Park** (above). Also, the winner of MSO's "Conduct the Orchestra" event will make a special appearance.



Marriage of Figaro Overture

"Pas de deux" from The Nutcracker, Op.71

Storm, for Orchestra

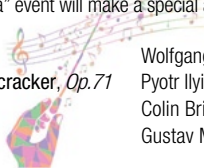
Symphony No. 5

Wolfgang Amadeus Mozart

Pyotr Ilyich Tchaikovsky

Colin Britt

Gustav Mahler



### Underwriters:

New England Cancer Specialists  
The Highlands

### Season Sponsors:

Bath Savings Institution  
HM Payson  
OceanView at Falmouth

### 2-Concert Sponsor:

Lamey Wellehan Shoes

### Concert Sponsors:

Berman & Simmons, Trial Attorneys  
L.L.Bean  
Norway Savings Bank

### Print Advertising Sponsors:

Sun Journal, The Cryer  
The Times Record

For more information visit: [MidcoastSymphony.org](http://MidcoastSymphony.org) or call: 207-846-5378



# Leary & DeTroy

## ATTORNEYS AT LAW

- Workers Compensation
- Criminal Law
- Personal Injury
- Divorce & Custody
- Social Security Disability
- Disability Discrimination

*Justin W. Leary*  
*Benjamin E. DeTroy*

90 Main Street • Auburn  
**782-3275**  
[www.LearyandDeTroy.com](http://www.LearyandDeTroy.com)  
Free Initial Consultation



*Learn your rights and obtain experienced, effective legal representation*



- NETWORKS
- SALES
- SECURITY
- REPAIR



*"Honest Job, Honest Price"*

1485 Lisbon Street  
Lewiston Maine 04240  
[info@tcpme.com](mailto:info@tcpme.com)

t. 207.783.7232  
f. 207.783.7260  
Weekdays 9AM – 5PM  
[www.tcpme.com](http://www.tcpme.com)  
[www.facebook.com/tcpme](http://www.facebook.com/tcpme)



# DIRIGO

FEDERAL CREDIT UNION

[www.dirigofcu.com](http://www.dirigofcu.com)

Lewiston-Auburn-South Paris-Mechanic Falls

# STUDIO 88 MUSIC SCHOOL

## SUZUKI TALENT EDUCATION • PIANO AND VIOLIN



Rachel Eastman Feeley  
Martha Gail Feeley

[Studio88music@aol.com](mailto:Studio88music@aol.com)  
207-344-9145



Good Health to you  
and the Planet too!

Serving Maine  
Since 1970

# AXIS NATURAL FOODS

120 Center Street Plaza  
Auburn, Maine 04210  
(207) 782-3348  
axisnaturalfoods.com

Natural & Organic Foods • Vitamins • Herbal Products  
Books • Body Care • Organic Produce

**A Maine Pioneer in Organic Farming...**

Earth Day Every Day!  
Organic Wine and Beer • Home Brewing • Gluten Free Items  
Organic Produce • Monthly Specials

## The Cote Corporation



- Crane & Rigging Services • Trucking • Millwright
- Machinery Moving • Warehousing
- Cranes up to 300 Ton Capacity
- Tip Height 361'

**DEDICATED TO EXCELLENCE!**

[www.cotecrane.com](http://www.cotecrane.com) • 800-696-6282  
2980 Hotel Road, Auburn, ME 04210



# EMERSON



CHEVROLET



BUICK®

946 Center St. • Auburn

emersonchevy.com

(207) 784-3503 • (800) 696-0766



**Lisa Laliberte, Agent**

224 Russell Street

Lewiston, ME 04240

Bus: 207-783-3332

[lisa.laliberte.gqph@statefarm.com](mailto:lisa.laliberte.gqph@statefarm.com)



132 Lincoln St.

Lewiston, Maine 04240

(207) 783-8593

130 Western Ave.

South Portland, Maine 04106

(207) 775-5381

[www.fxmarcotte.com](http://www.fxmarcotte.com)

## A Commitment To Excellence



Norman Hanson & DeTroy is  
a proud supporter of The Maine  
Music Society, The Public Theatre  
and the arts community in Maine.

[nhdlaw.com](http://nhdlaw.com)

*Attorneys at Law*

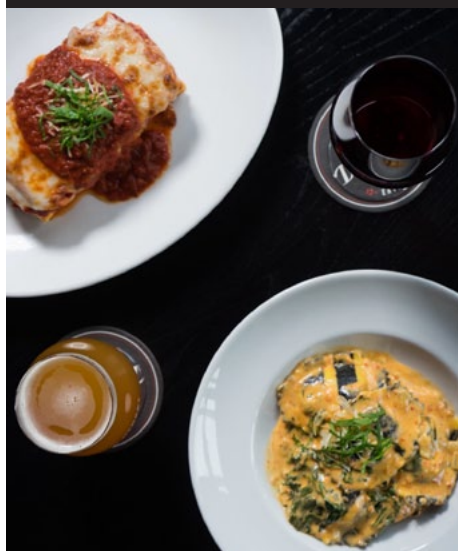
**NORMAN  
HANSON  
DETROY**

**Experienced. Efficient. Effective.**

Portland (207) 774-7000

Lewiston (207) 777-5200

## Dinner and a concert in perfect harmony.



150 MILL STREET, LEWISTON

[WWW.DAVINCISEATERY.COM](http://WWW.DAVINCISEATERY.COM)

**DaVinci's**

» • EATERY • «



*If*

YOU LOOK CLOSELY

*you'll see*

the Arts  
change  
everything.



**Rinck**

113 Lisbon Street  
Lewiston, Maine 04240  
(207) 755-9470  
[www.rinckadvertising.com](http://www.rinckadvertising.com)

**OUELLETTE & ASSOCIATES, P.A.**

CERTIFIED PUBLIC ACCOUNTANTS

1111 Lisbon Street  
Lewiston, Maine 04240  
(207) 786-0328 • Fax (207) 783-9377  
[www.oacpas.net](http://www.oacpas.net)

- Accounting
- Auditing
- Tax Services
- Bookkeeping Services
- Consulting Services
- Business Valuation

*Ed Buschmann's*  
**DUN ROAMIN' TREE FARM, LLC**

  
Fresh Christmas Trees  
Choose 'n Cut  
& Pre-Cut Available

**75 Dyer Road  
Lewiston, Maine  
04240  
207 - 577-5878**

  
**Maine Firewood**  
Dry Winter Hardwood  
- Stoves and Fireplaces  
Dry Summer Softwood  
- Fire Pits and Camping

Playing the fool and  
singing in the shower  
doesn't cut it.

Good thing we  
have the arts.

**Roopers**  
EST. '82



**Six convenient locations**

**AUBURN**

545 Minot Avenue – 783-2047  
301 Main Street – 783-9098

**LEWISTON**

686 Main Street – 344-1200  
794 Sabattus Street – 783-6353  
1420 Lisbon Street – 333-3095

**OXFORD**

980 Main Street – 539-6072



**~FOOD & SPIRITS~**

Serving the L/A area since 1985!

**Full-Service Family Restaurant**

Dining Room and Take-Out Hours  
11:00 AM - 9:00 PM Daily

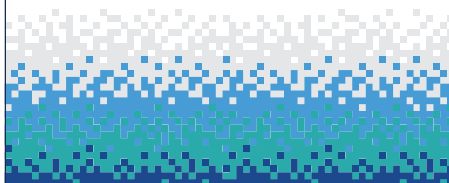
Hot and Cold Sandwiches • Pizza  
Pasta • Desserts • Lunch • Dinner  
Full-service Bar • Maine Micro-Brews  
Gift Certificates

85 Center Street • Auburn, Maine  
Call us at 207-784-8221  
[patsauburn.com](http://patsauburn.com)



**AUBURN**  
**Savings**

A Bank That Always  
Puts You Center Stage.



**AUBURN**

256 Court Street  
(207) 782-6871

**LEWISTON**

325 Sabattus Street  
(207) 782-0400

Bank on **us.** [www.auburnsavings.com](http://www.auburnsavings.com)



The Public Theatre was founded to bring high quality professional theatre to the people of Maine, at an affordable price. We strive to make our presentations accessible to all, especially those less likely by tradition or inclination to attend live theatre. In choosing our season, we look for plays that speak from the heart; that are life-affirming and uplifting even when the subject matter is dark or painful; that use our language in powerful and provocative ways; that invite the audience to see their world in a new way. Artistic excellence is central to the mission of The Public Theatre.

***The Public Theatre is a member of Theatre Communications Group (TCG), the national organization for the American theatre.***

### **Board of Directors**

Jennifer Malloy.....President  
Kari Grant-Gagnon .....Secretary  
Thomas H. Platz .....Treasurer

Deana Albert	Heidi McCarthy
Martin Andrucki	Colby Michaud
Barbara Helen Baker	Christopher Schario
Peter Kowalski	

**Associate Members:** Sue Brown, Linda Chiaravelotti, Marilyn Closson, Mary Ellen Costello, Kathy Gleason, Dina Jackson, Kathy Lawrence, Ben & Bonnie Lounsbury, Elaine Makas, Alice Mogensen, Chip Morrison, Carol Murrell,

### **Staff**

Christopher Schario.....Executive/Artistic Director  
Janet Mitchko .....Co-Artistic Director  
Carol Ham.....Business Manager  
Jennifer Madigan .....Asst. Director Marketing/Development  
Adam P. Blais .....Education/Development Director  
Amber Callahan .....Technical Director  
Erin Fauble.....Master Electrician  
Kathy Lawrence, Maureen Robillard .....Box Office Staff  
Ellie Dow.....House Manager  
Martin Andrucki .....Dramaturg/Literary Advisor  
Ben Lounsbury.....Video Archivist

**THE PUBLIC THEATRE** takes pride in recognizing our season sponsors. We seek to develop a partnership with local businesses working together for the enrichment of the Lewiston-Auburn area. The following businesses have joined us in this partnership. If you would like to see your company listed here, please contact us regarding sponsorship opportunities.

## **SEASON UNDERWRITERS**

[Austin Associates](#)  
[Maine Magazine](#)  
[Platz Associates](#)

[Sun Journal](#)  
[WOXO 92.7 & WIGY 105.5/95.7](#)  
[The Shubert Foundation](#)

## **CORPORATE SHOW SPONSORS**

[Androscoggin Bank](#)  
[Auburn Manufacturing](#)  
[Baxter Brewing, Co.](#)  
[Berube's Complete Auto Care](#)  
[Butler Bros.](#)  
[Cross Insurance](#)  
[Evergreen Subaru](#)  
[LA Metro Magazine](#)  
[Lee Auto Malls](#)

[Mechanics Savings](#)  
[NAPA Coastal Auto Parts](#)  
[Norway Savings Bank](#)  
[Patrons Oxford Insurance Co.](#)  
[Rent-It!](#)  
[Twin City Times](#)  
[Visbaras Law / Excalibur Title, LLC](#)  
[Warp + Weft](#)

## **EDUCATIONAL UNDERWRITERS**

[Androscoggin Bank](#)  
[Cross Insurance](#)  
Helen & George Ladd Charitable Corp.

[Maine Arts Commission](#)  
Margaret E. Burnham Charitable Trust  
[Onion Foundation](#)

## **EDUCATION PARTNERS**

[Carrabassett Coffee Company](#)  
[Hilton Garden Inn - Auburn Riverwatch](#)  
[Key Bank](#)

[Lewiston / Auburn Children's Foundation](#)  
[Liberty Mutual Insurance](#)  
[Ramada Hotel & Conference Center](#)

## **SEASON SUPPORTERS**

[Auburn-Lewiston YMCA](#)  
[The Cote Corporation](#)  
[Evergreen Custom Printing](#)  
[The Italian Bakery](#)  
[F.X. Marcotte Furniture](#)  
[Homelight, Inc.](#)  
[Lisa Laliberte State Farm Insurance\\*](#)

[Marden's Discount](#)  
[Sherwin-Williams](#)  
[Roy I. Snow, Inc.](#)  
[The Vault](#)  
[YWCA of Central Maine](#)

*\*performance sponsors*

## **GRANT SUPPORT**

[Actors' Equity Foundation](#)  
[Maine Community Foundation](#)  
[- Maine Theater Fund](#)

[Davis Family Foundation](#)  
[Maine Community Foundation](#)  
[-Donor Advised Fund](#)



# BE HERE NOW

By **Deborah Zoe Laufer**

Directed by  
**Christopher Schario**

Stage Manager  
**Christine Lomaka\***

Costume Design  
**Debra Susi**

Set Design  
**Amber Callahan**

Lighting Design  
**Erin Fauble**

Sound Engineer  
**John Morrison**

## CAST

(in order of appearance)

Bari.....	Janet Mitchko*
Patty .....	Sheila Stasack*
Luanne .....	Mary Mattison*
Mike.....	Russell Berrigan*

**Setting: East Cooperville, a fictional, small town in Upstate New York, about a hundred miles from Manhattan**

***Be Here Now* will be performed with an intermission**

"Be Here Now" is presented by arrangement with Concord Theatricals  
on behalf of Samuel French, Inc. [www.concordtheatricals.com](http://www.concordtheatricals.com)

Originally Commissioned and Produced by  
CINCINNATI PLAYHOUSE IN THE PARK

Blake Robison, Artistic Director  
Buzz Ward, Managing Director

*\* Members of Actors' Equity Association, the union of professional actors and stage managers in the United States.*

*Be Here Now* is Sponsored by



42 years of protecting  
industry from heat & fire  
with advanced textiles



WELDING



MECHANICAL INSULATION



SAFETY APPAREL

*We make locally and ship globally*

Located in Auburn and Mechanic Falls

[www.auburnmfg.com](http://www.auburnmfg.com)

U.S. Manufacturer!



*Be Here Now* is Sponsored by



**YOUR LOCAL  
INSURANCE AGENCY**

**PROUD  
SUPPORTER  
OF THE PUBLIC  
THEATRE**



**AUTO**



**HOME**



**LIFE**



**MOTORCYCLE**



**COMMERCIAL**

**150 Mill Street, Suite 4, Lewiston | 207.783.8591**

*Be Here Now* is Sponsored by

We are **proud** to  
support the arts  
in our community.

When you're always on the go, you  
need a bank that's always there  
for you. Our suite of personal and  
business products are designed  
to make banking easier, no matter  
what corner of the world you're in.

**WE HOPE YOU  
ENJOY THE SHOW!**

MEMBER  
FDIC



A Division of Maine Community Bank

**MECHANICS**  
**S A V I N G S**

**AUBURN**

**BRUNSWICK**

**LEWISTON**

**WINDHAM**

**207-786-5700**

**[mechanicssavings.com](http://mechanicssavings.com)**



**JANET MITCHKO** (*Bari*) Over the past 26 seasons Janet has acted in numerous TPT productions, including *A Doll's House PART 2*; *The Ladies Foursome*; *Good People*; *Time Stands Still*; *The Language Archive*; *Magnetic North*; *Almost, Maine*; *Enchanted April*; *Fiction*; *Red Herring*; *Three Days of Rain*; *Educating Rita*; and *Fallen Angels*, among others. Before life in Maine

began, Janet earned her living as an actress, acting teacher and director in New York City as well as around the country at various regional theatres. Janet is currently the Co-Artistic Director at TPT, and when she's not onstage, she can usually be found directing (*Last Gas*, *Under the Skin*, *The Hound of the Baskervilles*, *Around the World in 80 Days*, etc), or helping the trains run on time. Janet is a graduate of the acting program at Carnegie-Mellon University, and the proud mother of Emily.



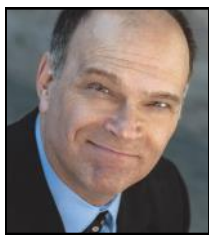
**SHEILA STASACK** (*Patty*) couldn't be happier to be appearing once again at The Public Theatre. Past performances here include Mrs. Cratchit/Xmas Past in *A Christmas Carol*, Mommy in *Miss Witherspoon*, Bessie in *Marvin's Room*, Mrs. Kravitz in *Red Herring*, Ruella in *Communicating Doors*, and Jane in *Fallen Angels*. Sheila has a delightful, comedy movie coming

out this summer, *Love in Kilnerry*. Keep your eyes open for it. She has also appeared on TV in *Bull*, *Law and Order*, *Forever*, *The Path*, *The Brotherhood*, *Against the Law*, *The Unusuals*, and *Guiding Light*. She has over two dozen audiobooks to her credit. Sheila is a proud member of Actors' Equity.



**MARY MATTISON VALLERY** (*Luanne*) is thrilled to make her Public Theatre debut! Mary originated the role of Elizabeth Bennet in the new musical *Pride and Prejudice*, now streaming on Amazon Prime. Other favorites include *Mamma Mia!* (Sophie), *GYPSY* (Louise), *Blue Bloods*, and readings of *Clueless The Musical* (Cher), and *Superhero* (Vee) at the Eugene

O'Neill Theatre Center with Kelli O'Hara. Mary is a proud UNCSA graduate.



**RUSSELL BERRIGAN** (*Mike*) A Rhode Island native, Russell attended the University of RI and was a founding member of Providence's Wickenden Gate Theatre. He has worked at a variety of New England Theatres including Trinity Rep, New Rep, Wheelock family Theatre, Foothills Theatre and North Shore Music Theatre. Favorite roles over the years include

Timmy in *The Subject Was Roses*, Harry in *The Sum of Us* at Brown University's Summer Theatre, John Merrick in *The Elephant Man* and Rod in *At the Still Point*. Russell has appeared previously at The Public Theatre in *Sideman*, *Marjorie Prime*, *Sexy Laundry* and *Christmas Carol* (14 years). He's extremely pleased to be back in the other LA and performing for its good citizens.

**DEBORAH ZOE LAUFER** (*Playwright*) is a graduate of Juilliard, an alumna of the BMI Lehman Engel Musical Theatre Workshop and a member of The Dramatists Guild. Deborah is a recipient of the Helen Merrill Playwriting Award, the Lilly Award, and grants and commissions from The Alfred P. Sloan Foundation, The Edgerton Foundation, The National New Play Network, the NEA, and the LeCompte du Nouy grant from the Lincoln Center Foundation. Her plays have been produced at Steppenwolf Theatre Company, Cleveland Playhouse, Geva Theatre Center, Cincinnati Playhouse in the Park, Portland Stage, and The Humana Festival. *Be Here Now*, commissioned and produced by Cincinnati Playhouse in the Park, and *Window Treatment*, a collaboration with composer Daniel Green, produced in NYC by Premieres, Inner Voices are Deborah's most recent plays.



**CHRISTOPHER SCHARIO** (*Executive/Artistic Director*) has been Artistic Director of The Public Theatre since 1993. His adaptation of *A Christmas Carol*, published by Dramatists Play Service in 1996, was developed for The Public Theatre and has enjoyed successful productions at professional and amateur theatres throughout the world. In New York he directed for

Roundabout Theatre, Westbeth Theatre, Spectrum Stage, American Academy of Dramatic Arts, Drama Project and Madison Avenue Theatre. Regional theatre directing includes Alabama Shakespeare Festival, Boulder Ensemble Theatre, Kentucky Repertory Theatre, Toledo Repertory Theatre and Millbrook Playhouse. He has acted Off-Broadway, on national tours, regional theater, summer stock, dinner

theater, films, soaps and commercials. He has taught at Carnegie-Mellon University, University of Colorado, University of Tennessee, American Academy of Dramatic Arts, as well as privately in New York. He received a BFA in Acting from Ohio University and an MFA in Directing from Carnegie-Mellon University.

**CHRISTINE LOMAKA** (Stage Manager) has had the good fortune to work with The Public Theatre on *Middletown*, *Indoor / Outdoor*, *Visiting Mr. Green*, and *Dr. Jekyll and Mr. Hyde*. Other companies she's worked with include Martha's Vineyard Playhouse, Portland Stage Company, Trinity Rep, Actors Theatre of Louisville, Syracuse Stage, Geva Theatre, LA Opera, and Houston Grand Opera. Chris spent 15 years in Los Angeles working in film, television, opera and theater, and was the production manager and lighting designer for The Groundlings. Chris has been a member of Actors Equity since 1987.

**AMBER CALLAHAN** (Set Designer/Technical Director) is delighted to return to The Public Theatre as Technical Director and occasional set designer. She spent the previous four years employed in the fields of theater and special education and recently received her certification as a K-12 theater instructor. Upon graduating from USM with a double major in Art History and Chemistry, Amber has acquired several years of experience as an antique restoration technician and upcycling artist. What feels like a lifetime before that, she graduated from UMaine with a double major in Theater and Psychology and worked with a plethora of theaters throughout New England. She would like to dedicate this set design to her father, Malcolm Callahan, who has been the ultimate hero, friend, and inspiration a daughter could ask for. I love you to the moon and back dad.

**ERIN FAUBLE** - (Lighting Designer/Master Electrician) heralds from the little town of Anderson, SC. After graduating with a BA in Musical Theatre from Converse College, Erin went on to do electrician work at Flat Rock Playhouse for such productions as *Amadeus* and *Little Shop of Horrors*, and to design the lights for Theater at Monmouth's *An Iliad*. She aspires to be both a professional Lighting Designer and to be a successful mother to her fur-baby—a small, bossy gray cat with enormous green eyes.

**DEBRA SUSI** (Costume Designer) is thrilled to be a part of The Public Theatre's production of *Be Here Now*. Previous Public Theatre productions include *Screwball Comedy*, *Middletown*, *Things My Mother*

*Taught Me, Sexy Laundry* and *Women in Jeopardy*. Debra's directing & costume design credits include *Joseph and the Amazing Technicolor Dreamcoat*, *West Side Story*, *The Secret Garden*, *Communicating Doors*, *Man of La Mancha*, *Into the Woods*, *Oklahoma!*, *Chicago* and many more at The Waterville Opera House. For the past 20 years Debra has worked as both a high school and middle school Theatre Arts teacher. To all my family and friends for their continued patience, love, and support of my artistic work, thank you. Thank you, AB and JM for this opportunity.

**JOHN MORRISON** (*Sound Designer*) is a sound technician from Auburn, ME in his 7<sup>th</sup> season with The Public Theatre. Recent projects include sound design for *I and You*, *Fireflies*, directed by Judith Ivey, and *Grease*, all at The Public. In addition, he has mixed live performances of David Lang's *the little match girl passion* for Figures of Speech Theater at College of the Holy Cross in Worcester, MA. John frequently mixes live music performances at The Opera House in Boothbay Harbor and provides tech support to theater and dance programs at Bates College, and to the Bates Dance Festival. Over the years, John has worked on projects with James Taylor, Spalding Gray, Chris Botti and Milos Forman. It is unlikely that anyone recalls John's audio contributions to early '80's New York productions of *Taking Steam*, *The Smiling Assassins*, or *Mysteries of the Bridal Night*.

**HANNAH NIES** (she/her) (*Intern/Company Manager*) is a graduate of Wellesley College, where she studied English and Theatre Studies, with a focus in directing. Past productions include: *All is Calm: The Christmas Truce of 1914* (Four Seasons Theatre), *Lucia di Lammermoor* (Madison Opera), *Small Mouth Sounds* (Wellesley College), *Much Ado About Nothing*, *A Midsummer Night's Dream*, *Romeo and Juliet*, and *Macbeth* (Wellesley College Shakespeare Society). Many thanks to Marta, Lois, David, Sarah, the Fondue Squad, and everyone who's helped me to grow. To Mom: pudding!

**BILL REED** (*Board Operator*) is a familiar face at The Public Theatre having last volunteered with building sets during the 2019-20 season. He has volunteered at a number of organizations including Penobscot Theatre Company and American Red Cross. Bill received a Bachelor's Degree from the University of Maine at Orono.



**LISA BRAGDON** (Crew) has been working as an AEA Stage Manager for over 25 years. She has worked at big theaters and small, and loves working at The Public Theatre. A Registered Maine Guide for the last 26 years she spends Summers guiding wilderness canoe trips for Dave Conley at Canoe the Wild, and filming for her YouTube channel "3 Minutes with a Maine Guide".



**ACTORS' EQUITY ASSOCIATION** was founded in 1913 to protect Actors from the severe mistreatment that permeated the industry at that time. Since its inception Equity has had only nineteen Presidents. Its current President is Kate Shindle. The Association consists of over 51,000 distinguished stars and other professional Actors and Stage Managers who work nationwide, from New York's Broadway to Los Angeles, from Minneapolis to Miami Beach, in regional, stock and dinner theatre, and in theatres for young audiences which build the audiences of tomorrow. These Actors and Stage Managers are committed to working in the theatre as a profession, not an avocation, and bring to you the finest professional training and experience. By presenting Equity productions, this theatre offers to you, our audience, the best entertainment presented by the finest quality Actors and Stage Managers that your admission dollars can buy.

## **Special Thanks**

**Bedard Medical Supplies  
Chill Yoga**

**Jennie Malloy  
Marden's**

**We would like to also thank all of our wonderful  
poster people and ushers  
who are too numerous to name.  
We couldn't do what we do without YOU!**

# 2021-22 Season Underwriters



**AUSTIN ASSOCIATES**  
CERTIFIED PUBLIC ACCOUNTANTS

Two Great Falls Plaza  
Auburn, ME 04210  
1-800-605-9263  
[austinpa.com](http://austinpa.com)

**maine.**  
THE MAGAZINE

[themainemag.com](http://themainemag.com)

**Subscribe.**

\$50/year for both



**MHD**

MAINE HOME + DESIGN

[mainehomedesign.com](http://mainehomedesign.com)

**PLATZ ASSOCIATES**  
*Since 1980*  
*Architects • Engineers*  
*Construction Managers*

Two Great Falls Plaza  
Auburn, ME 04210

207-784-2941  
[platzassociates.com](http://platzassociates.com)

**Sun Journal** 175 years



*Connecting you with  
your community*

[sunjournal.com](http://sunjournal.com)



---

The Public Theatre's Assisted  
Listening System  
was funded in part by  
**Dr. & Mrs. Ben Lounsbury**  
and a grant from the  
**Maine Arts Commission**,  
an independent state agency  
supported by the  
National Endowment for the Arts.



We are pleased to offer  
hearing assistance free of  
charge to help patrons  
with hearing difficulties  
enjoy our productions to their  
fullest, no matter where they are  
seated in the Theater. We are using  
a system which transmits an FM  
signal to a personal receiver outfitted  
with lightweight headphones, or neck-  
loop for hearing aids equipped with a  
T-coil. Please inquire at the Box  
Office for more information.



---

## **WANT FREE TICKETS TO THE PUBLIC THEATRE?**

**We are looking for poster volunteers  
for the following routes:**

**Auburn—Lower & Center Street  
Auburn—Main Street  
Bowdoin/Bowdoinham  
Greene/Leeds  
Monmouth  
New Gloucester/Gray  
Portland**

**[Email us about Postering](#) or call 782-2211**

# INDIVIDUAL DONORS

Contributions are the cornerstone of a not-for-profit theatre. Ticket sales generate less than 40% of our income. We thank the following individuals who have supported The Public Theatre with their generous financial contributions. **If you would like to join our Individual Donors, please call 782-2211.**

## Star (\$1000+)

Martha Corey  
Althea Croxford & Phil Blake  
David Eskelund  
Anonymous  
Elaine Makas  
Susan & Philip Morgan  
James & Candace Platz  
Thomas H. Platz\* &  
Paula Marcus-Platz  
Patricia Smith & Richard Tucker  
Edward Walworth & the late Candace  
Walworth\*  
Ellen W. P. Wasserman\*  
Susan & Robert Weiss\*

## Producer (\$500-\$999)

Brenda Boothby  
Phyllis Deringis  
Bill & Cynthia DeSoy  
Ken & Melinda Emerson  
Ben & Bonnie Lounsbury\*  
Jennie & Michael Malloy  
Denise McCourt-Buikema  
The McKenzie Artists & Animals  
Alice & Mark Mogensen  
Barbara & Lanny Oliver  
William Phillips  
Darby Ray & Raymond Clothier  
Anonymous  
Patricia & Stephen Sawyer  
Dan & Deb Snow  
Ann E. Weiss

## Director (\$250-\$499)

Paul & Nina Baril  
Ronald & Donna Bissonnette  
Jeffrey & Susan Brown  
Ed & Louise Buschmann  
Ned & Kitsie Claxton  
Anonymous  
Alvin & Anne-Marie Da Costa  
Gretchen & Jerry Davis  
Mr. & Mrs. RJ Gagnon  
Matt & Tracy Hancock  
Ralph & Melinda Harder\*  
Vivianne Holmes  
James & Julie Jackson  
Katharina Keoughan  
Gary & Lynn Knight  
John & Elizabeth Lewandowski  
Deborah Savadge & Playwrights  
Gallery  
Robert & Ellie Simard  
Pete Small

\* Denotes Theatre Founder

Dave & Kathleen Stuchiner  
Bette J. Swett-Thibeault  
Cecile Thornton  
Anne Weatherbee

## Leading Actor (\$100-\$249)

Deana Albert  
Bruce & Pamela Allen  
Martin & Judy Andrucki  
Gene & Ellen Benner  
Fred & Janet Bishop  
David Blocher & Helen Warren  
Anonymous  
John & Doris Bonneau  
Jazzmin Bonner  
Jonathan Bradshaw  
M. Elaine Briggs  
Carl & Joyce Bucciantini  
Constance Cardamone  
John Cariani  
Jim Carville  
Paul & Jennifer Ciejka  
Rae Clark-McGrath  
Holly Cooney  
Linda W. Copas  
Ellen Crawford & Mike Genovese  
In Memory of Elizabeth Crowley  
Marian Dalton  
Gregory & Jane D'Augustine  
Dick & Carol Davis  
Peggy DeBlois  
Rick & Barbara Diamond  
Dr. Arthur Dingley  
Josephine & Stephanie Dupal  
Lisa & Joseph Elichaa  
Wendy Emery  
Alice Faucher  
Anonymous  
George A. Gilmore  
Kathy Gleason  
Robert Grieshaber  
Michelle & Normand Groleau  
Jody Harris  
Allan & Libby Harville  
Judith Head & Michael Jones  
Connie & Bob Hitchcock  
Nick Poulton & Barbara Howard  
Penny Jessop & David Chittim  
Rich & Jackie Jordan  
Tim & Sue Jordan  
Michael & Janet Joseph  
James Kearney & Carol Rice  
Lee & Ingrid Kendall  
Nancy Kessler  
Joseph Klapatch & Michael Jinbo  
Robert & Nancy Kleckner

Paul Knight  
Gail Carville & Peter Kowalski  
Heidi McCarthy & Adam Lee  
Joan & Richard Legendre  
Mary & Vincent Louque  
Mr. & Mrs. William Luening  
Stephen & Irene MacDougall  
Virginia Marczak  
Pam & Michael Matzinger  
Joseph P. McGovern  
Andrew & Joanne McKee  
Steve & Nancy Mennealy  
Armand & Lucille Mercier  
Sergy A. Miller  
Chip & Jane Morrison  
Earl & Joanne Morse  
Tom Knowlton & Tina Moylan  
Jeff & Jo Ann Newell  
Anonymous  
Edward Barrett & Nancy Orr  
Joel & Dave Oshansky  
Debra & Craig Phillips  
Martha Richardson  
Carolyn Robertson  
Craig & Carol Robinson  
Bruce Rood  
Linda Roy  
John & Susan Saunders  
Mary Snell & Irwin Novak  
Rick Speer & Judy Frost  
Judy Staicer & Robert Schwartz  
Gary & Anne Stuer  
Jeff & Sue Sturgis  
Stan & Cathy Tetenman  
Anonymous  
Elwood & Susan Trask  
Adriann Tucker  
Sue Tymoczko  
Cornelia Viek  
Richard & Lois Wagner  
Richard & Bridget Whiting  
Liz Wilson  
Edwin & Louise Woods  
Frank & Louise Wotton

## Stage Manager (\$50-\$99)

Acadian Plumbing  
Tony & Marcia Augello  
Mary Bayer & Leon Bresloff  
Rita Beaulieu  
Sharon & Dennis Bergeron  
Rita Beaulieu  
Judith H. Blanchard  
Leah & Jean Boyd  
Leslie Bray  
Frank Broadbent  
Anthony Butterall

Constance Cardamone  
Deborah Chandler  
Mary Lou Chlipala  
Patricia Clark  
Steve & Marilyn Closson  
Dorothy Cobb  
Bruce & Whitney Condit  
Kathleen & Ed Cormier  
Deena & Chet Day  
Judy & Richard Day  
Lynn & Nancy DeVane  
Anonymous  
Dacrel Devou  
Cheryl Diehl  
Cheri & Jack Donahue  
Rachel & Michael Doucette  
Carolyn Downing  
Grace Drown  
Anonymous  
Elaine & Richard Dubois  
Marie Dunnington  
Elaine & David Elliott  
Richard Estabrook & Ann Havener  
Anonymous  
Judith & Greg Fergin  
Cyndi & Paul Fortier  
Diana Gaidos  
Patricia M. Gautier  
Gregory Glovach & Joan Kelly  
Teresa Golan  
Judith Golin  
Donald & Laural Grant  
Gregory & Elizabeth Hanscom  
Claire Hebert & Mary Weissenberger  
Rollie Heckethon  
Christine Holden  
Paige Holmes & James Pineau  
Janet Isbell  
Tonja Japp  
Peter & Sandra Kaynor  
Cheryl King  
Mara & Chris King  
Ray & Sue Lagueux  
Richard & Lynn Lee  
Anonymous  
Natalie Rose Libera  
Robert & Margaret Liversidge  
Mary & Peter Longley  
Pat & Fred Lowther  
Theda Lyden  
Anonymous  
Diane Maheux  
Renata Manomaitis  
Gerald & Claudette Martel  
Linda & Kelly Matzen  
Maria McDonald  
Rosemary McLean  
Roger & Lucy Mills  
Robert & Joan Mohlar  
Deborah Nies & Linda Aumann  
Hartley Noyes  
Dennis & Janet O'Neil  
Susan & Timothy Parsons  
Jeffrey Pinnette

Edouard Plourde  
Lorraine Poulin  
Monique Poulin  
Kenneth & Grace Reed  
Kevin & Pat Regan  
Anonymous  
Suzanne R. Roy  
Jean Saunders  
Regina Schaare-Denio & Dennis Denio  
Tyla & Arthur Schaefer  
John Scherbarth & Katie Luz  
Barbara Shapiro  
Tom & Claudette Shea  
Susan Wygel & J. Gregory Shea  
Christine Sirois  
Patricia Snyder  
Joe Sullivan  
Steve & Carol Thomas  
Lorraine Turcotte  
Lee & Stephanie Upton  
Joseph C. Varuolo  
Lorna & Peter Wales  
Crystal Ward  
Paul & Bethany Whalon  
Marjorie Whipple  
Diane Whitmore  
Reginald & Patricia Wing  
Andy & Marlene Witham  
Kathy Wyatt

#### **Supporting Actor (\$20-\$49)**

Linda Albert  
Aileen Allen  
Pamela Amrein  
Maureen Aube  
Paul Balze  
Anonymous  
Penny Bedard  
Bruce & Pam Bell  
Lauren Bozzi  
Faye Brown  
Anne Moreau Burg  
Sandra Carder  
Kevin & Catherine Carey  
Sandra Chamberlain  
Robert & Tookie Clifford  
Amu Constantine  
Diane Day  
Johannah Degrandprie  
Peggy Dorf  
Diana Dowd & Craig Doremus  
Doris Ducharme  
Linda Durgin  
Gillian Enrich  
Glenda Erickson  
Jane Erickson  
Harriet & Belzad Fakhery  
Richard Fein  
Jeffrey Frankel  
William Fuller  
Susan Hathaway Glines  
Gail Grigsby  
Pamela Gross & James Crary  
Gerald Hartz  
Rena Heath  
Linda Hill  
Sandra Hodge  
Kate Holthausen  
Mary Houlihan  
Nan Hughes & Norm Rich  
Wendy Jacobs  
Rita James  
Christina & Verdell Jones  
Karen Klatt  
Deborah Lamb  
Jerrianne LaPerriere  
Caj MacDonald  
Joy & Bob Malicia  
Linda Manchester  
Virginia Marriner  
Elizabeth B. McCall  
Joanne McDermott  
Sheila McGarr  
Nancy Mercer  
Pam Meserve  
Donald Miville  
Roland Morin & Laura Cote  
Sandra Morrell Rooney  
Gilbert & Patricia Morrison  
Richard & Sharon Moulton  
Arlene & Stanley Nickerson  
Kathleen O'Donnell  
William Peden  
Joan Pedersen  
Richard & Rose Pelletier  
Helene & Lewis Perry  
Mark & Susan Perry  
Theresa Plourde  
Sue & Ronald Pomerleau  
Carl Prouty  
Dr. & Mrs. Paul Raczyński  
Michael Richard  
Lucille Rioux  
N. S. Roy  
Gina & Mark Scanlon  
Johanna Seltzer  
Bonnie Shulman  
Iris Silverstein  
Richard Skarzynski  
Sue & Ken Spalding  
Elaine M. St. Pierre  
Rebecca Johanna Stephens  
Anita Stone  
Anonymous  
Jackie & Dick Strong  
Holly & David Sysko  
Terry Prince-Tarsetti  
Thomas Tatro & Jane Stone Tatro  
Lisa Therrien  
Sara Townsend  
Charlene Tucker  
Melissa & Gary Veilleux  
Cornelia Viek  
Patricia A. West  
Betty & John Woodbury  
D. C. Wyman

**This list reflects donations of \$20 or more received through May 13, 2022**

## 2022-23 Subscription Series



- Enjoy FOUR great shows for only \$100!
- Receive a FREE Bonus ticket (\$25 value)
- Choose from Same-Day or Flex Plans.

Read more at:

[thepublictheatre.org/subscribe](http://thepublictheatre.org/subscribe)  
or call 782-2211

### **Morning After Grace** by Carey Crim

**September 16-25, 2022 | Video-On-Demand Sep 20-25, 2022**

This hilarious, heart-warming and thoughtful new play about three baby boomers who unexpectedly enter and heal each other's lives, truthfully tackles the topics of love, loss, sex, aging parents, and even medical marijuana munchies. After hooking up at a funeral, Angus and Abigail find themselves waking up entangled in the sheets. When a neighbor knocks on the door, all bets are off for a peaceful retirement. This charming and big-hearted comic-drama takes us on a truthful, humorous and deeply satisfying journey, proving that retirement and aging doesn't mean the end of living and learning.

### **The Victorian Ladies' Detective Collective**

by Patricia Milton

**November 4-13, 2022 | Video-On-Demand Nov 8-13, 2022**

It's an entertaining murder mystery with a modern female sensibility! Two strong-willed sisters run a boarding house for single ladies in Victorian London. When a series of mysterious murders terrorize their neighborhood, they find Scotland Yard to be no help at all! Taking matters into their own hands, the two women team up with a cheeky American actress and set off to solve the crime.

### **Pilgrims Musa and Sheri in the New World**

by Yusef El Guindi

**March 3-12, 2023 | Video-On-Demand Mar 7-12, 2023**

Anyone who has ever looked for love knows the dilemma. Do you make a safe, sensible match, or risk everything on the unexpected great love of your life? Musa, a sweet-natured immigrant cab driver and semi-practicing Muslim, and Sheri, a sassy American waitress, negotiate the twists and turns of love and cultural differences which draw them together as much as pull them apart. Winner of the Steinberg New American Play Award, don't miss this smart, funny and thought-provoking romantic comedy.

### **Jeeves and Wooster in 'Perfect Nonsense'**

by The Goodale Brothers

**April 21-30, 2023 | Video-On-Demand Apr 25-30, 2023**

This delightfully silly comedy will tickle the funny bone in audiences of all ages. Bertie's friends find his anecdotes so entertaining they've suggested he rent a theatre and tell them on stage! Lucky for him, his dependable valet Jeeves is on hand to run the lights, create the scenery, play all the roles and save the day. Inspired by the comic stories of P.G. Wodehouse, and told in the comic style of our production of *The Hound of the Baskervilles*, don't miss London's Olivier Award Winner for Best New Comedy.



## Business Listings

**Austin Associates, P.A. ....207-783-9111**

Certified Public Accountants

Auburn — Norway — Madison

[www.austinpa.com](http://www.austinpa.com)

**Optometric Associates .....207-784-3564**

*Home of Healthier Eyes*

168 East Avenue, Lewiston, Maine 04240

[www.optometricassociates.com](http://www.optometricassociates.com)

**Roy I Snow, Inc.....207-782-3734**

Electrical Contractor

11 Library Avenue, Auburn, Maine 04210

Contact us online

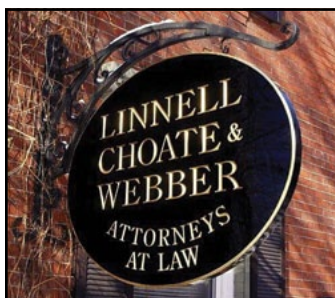
**Proceeds from advertisements in PERFORMANCE! provide important support to the Arts in your community.**

**Contact us to advertise  
in this playbill for 2022-23**

Penny Drumm • 207.333.3386

[penny.smartmanagement@gmail.com](mailto:penny.smartmanagement@gmail.com)

  
**SmART**  
Management



**Small Town Feel ~ Nationwide Reach**

Family Law ♦ Estate Planning ♦ Bankruptcy  
Civil Litigation ♦ Criminal Defense  
Real Estate Law

Business Law ♦ Employment Law  
Workers' Compensation ♦ Construction Law

83 Pleasant St. Auburn ♦ 207-784-4563

**FULL SERVICE LAW FIRM SINCE 1931 ♦ [lcwlaw.com](http://lcwlaw.com)**

Safe Voices is building a comprehensive domestic violence and sex trafficking resource center in downtown Lewiston. **Join us.**

**SafeVoices**  
Working to End Domestic Violence

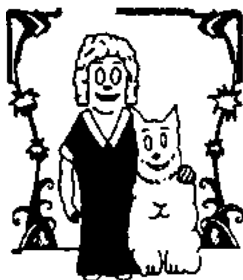
## THE BLUEPRINT

**A \$1 Million Campaign for Survivors**

[www.giving.safevoices.org](http://www.giving.safevoices.org)

### Orphan Annie's Antiques

*New England's largest selection of Art Deco and Art Nouveau. Tiffany, Steuben, Gallé, and other prominent French and American art glass. Furniture, lighting, and vintage clothing. Large collection of estate and costume jewelry. Wide selection of dinnerware, including Fiesta and Depression glass. Featured in Down East, March '96. Open Mon.-Sat., 10-5; Sun. 12-5. Three floor warehouse sale every Monday 10:00 am - 1:00 pm at 110 Turner Street.*

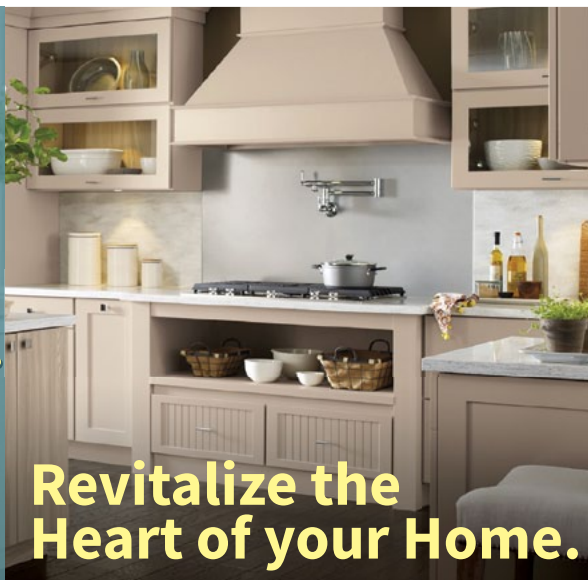


**96 Court Street (across from the courthouse), Downtown Auburn • 207-782-0638**  
**orantiques@myfairpoint.net • OrphanAnniesMe.net**

- ✓ Friendly and professional sales staff
- ✓ Complete showroom with functioning display
- ✓ Free 3D design services with purchase of materials

**Kitchen  
Bath &  
Flooring  
Center**

*a division of*



**Revitalize the  
Heart of your Home.**

**Hammond  
Lumber Company**

**21 LOCATIONS ACROSS MAINE**

Auburn • Bangor • Bar Harbor • Belfast • Belgrade • Blue Hill • Boothbay Harbor  
Brunswick • Bucksport • Calais • Camden • Cherryfield • Damariscotta • Ellsworth  
Fairfield • Farmington • Greenville • Machias • Portland • Rockland • Skowhegan

[WWW.HAMMONDLUMBER.COM](http://WWW.HAMMONDLUMBER.COM)





## THE CHAMPOUX GROUP

CHAMPOUX • PEOPLES • PINKHAM • ROGERS  
**I N S U R A N C E**

Personal • Business • Bonding...

*...Your Security Is Our Main Concern!*

[www.MaineInsuranceOnline.com](http://www.MaineInsuranceOnline.com)

*Supporting the Arts*

*Specializing in Family Law & Litigation*

**ANDRUCKI & KING**

ATTORNEYS AT LAW

207.777.4600 • [ANDRUCKILAW.COM](http://ANDRUCKILAW.COM)  
179 LISBON STREET, LEWISTON, ME 04240



**990 Center St. Auburn, ME**  
**[emersontoyota.com](http://emersontoyota.com) (207) 784-1348**

*“Where You Buy Is As Important  
As What You Buy”*

# Optometric Associates

Home of  
Healthier  
Eyes

**Douglas J. Henry, O.D., Ph.D**

Diplomate, American Board of Optometry

**Stephen L. Ebersole, O.D.**

Diplomate, American Board of Optometry

**Abigail R. Heroth, O.D.**

- Comprehensive Eye Exams
- Over **1000** Fashion Frames In Stock with On-Site Lab for Fast Service
- Contact Lens Specialists
- **New** Dry Eye Center
- Eye Disease Treatment
- Laser Surgery Co-Management

Ask us about  
**Lipiflow Dry  
Eye Therapy**

**Prescription and  
Non-Prescription  
Sunglasses**



**Serving L/A for  
more than 60 Years**

**784-3564**

**168 East Ave., Lewiston**

[www.optometricassociates.com](http://www.optometricassociates.com)

E-mail: [respond@optometricassociates.com](mailto:respond@optometricassociates.com)



Medicare, Most Insurance  
& CareCredit™ Accepted

## THE PUB BAXTER BREWING CO.

**\$5 OFF YOUR BILL  
OF \$35 OR MORE**

**MUST SHOW TICKET  
FROM SAME-DAY  
PLAYBILL EVENT**

**120 MILL ST - LEWISTON, ME - [WWW.PUBATBAXTER.COM](http://WWW.PUBATBAXTER.COM)**

**Water that just works.**



**Maine's leader in water well  
drilling, pump installation,  
water treatment systems,  
and geothermal installation**

**207.224.7861**

[goodwinwellandwater.com](http://goodwinwellandwater.com)



**CATERING DIVISION**

***We are your affordable alternative for:***  
**ANNIVERSARIES**

**WEDDINGS ~ SHOWERS**

**BANQUETS ~ BUSINESS MEETINGS**

**ANY GET TOGETHER**

**COMPLETE DINNERS**

**ITALIAN BUFFET**

*Courtesy, Quality & Service...*

*A winning combination since 1939*

**782-2550**

**[www.samsitalian.com](http://www.samsitalian.com)**

warp+weft

The arts bring  
*texture* to  
our lives and  
community.

Brand with  
texture.



[warpweftbranding.com](http://warpweftbranding.com)

# PENMOR

L I T H O G R A P H E R S



**OFFSET PRINTING • DIGITAL PRINTING  
SIGNAGE • MAILING • FULFILLMENT**

Let us show you how over half a century  
of printing experience can make your  
images come to life on paper.

**800-339-1341**

8 LEXINGTON STREET • LEWISTON, ME 04240  
[www.penmor.com](http://www.penmor.com)



## DeBlois Electric, Inc.

ELECTRICAL CONTRACTOR • DESIGN BUILD

***Building Lasting Relationships Since 1967***

- Service • Small Projects • Generators • Smart Homes

[www.debloiselectric.com](http://www.debloiselectric.com)  
Lewiston, ME • 207-783-6512

“Art is the only way to run away without leaving home.”  
— Twyla Tharp

We hope this performance takes you to places far and wide,  
and returns you enlightened, entertained and enriched!!



Visbaras Law  
&  
Excalibur Title  
*Company of Maine*  
— LLC —

*Providing quality legal services since 1986 in real estate closings,  
titles and title insurance, zoning and land use, business start-ups,  
residential and commercial property sales, and individual wills and trusts.*

K. Alexander Visbaras, Esq.  
195 Center Street  
Auburn, Maine 04210  
207-376-3126 & 207-376-3127  
[kalex@visbaras.com](mailto:kalex@visbaras.com)





## YOUR FUTURE STARTS HERE.

**Earn a high-quality  
education with one of  
the lowest tuition rates  
in New England.**

Enjoy over 40 program options including 100% online choices; personal academic advising and support; financial assistance; student life whether you live on campus or commute; and collegiate athletics - both traditional and esports.

FOR CUSTOMIZED TRAINING AND  
PROFESSIONAL DEVELOPMENT  
OPPORTUNITIES, VISIT  
**WWW.CMCC.EDU/BUSINESS**

**www.cmcc.edu**

(207) 755-5273  
1250 Turner Street • Auburn

Notice of Non-discrimination: Central Maine Community College is an equal opportunity/affirmative action institution and employer. For more information, please call Barbara Owen at 207-755-5233 or bower@cmcc.edu.



## FISH BONES



JOIN US BEFORE  
OR AFTER THE SHOW  
**FISH BONES GRILL**  
70 LINCOLN ST., LEWISTON, ME  
(207) 333-3663 | [www.fishbonesgrill.com](http://www.fishbonesgrill.com)

## We are **proud** to support the arts in our community.

When you're always on the go, you need a bank that's always there for you. Our suite of personal and business products are designed to make banking easier, no matter what corner of the world you're in.

**WE HOPE YOU  
ENJOY THE SHOW!**

MEMBER  
FDIC



A Division of Maine Community Bank

**MECHANICS  
SAVINGS**

AUBURN BRUNSWICK LEWISTON WINDHAM  
207-786-5700 [mechanicssavings.com](http://mechanicssavings.com)





# **SCHOONER** **IS LOVELY IN THE** **RAIN**

Aime Morin

**AND IN THE**  
**SUN**  
**AND IN THE**  
**SNOW**

**Schooner Estates Senior Living Community**

*Supporting the Arts in L/A for more than 20 years.*

Call (207) 784-2900 today for a tour.



## Alphabetical Business Directory

Androscoggin Bank .....	Inside Front Cover
Andrucki & King .....	C-3
Arts & Culture LA .....	Back Cover
Auburn Savings Bank .....	A-10
Austin Associates .....	C-1
Axis Natural Foods.....	A-7
Business Listings .....	C-1
Central Maine Community College .....	C-7
Champoux Group, The .....	C-3
Computer Place, Inc, The .....	A-6
Cote Corporation, The .....	A-7
DaVinci's .....	A-8
DeBlois Electric .....	C-6
Dirigo .....	A-6
Dun Roamin' Tree Farm .....	A-9
Emerson Chevrolet Buick .....	A-8
Emerson Toyota .....	C-3
Fish Bones American Grill .....	C-7
FX Marcotte .....	A-8
Gendron Franco Center .....	A-4
Goodwin Well & Water.....	C-5
Hammond Lumber .....	C-2
Leary & DeTroy .....	A-6
Lee Auto Mall .....	A-2
Linnell, Choate & Webber .....	C-1
Lisa Laliberte State Farm Insurance.....	A-8
Maine Music Society .....	A-1
Maine State Music Theatre .....	Inside Back Cover
Mechanics Savings .....	C-7
Midcoast Symphony Orchestra .....	A-5
Norman, Hanson & DeTroy, LLC .....	A-8
Optometric Associates .....	C-1
Optometric Associates .....	C-4
Orphan Annie's .....	C-2
Ouellette & Associates .....	A-9

*continued*

## Alphabetical Business Directory

Pat's Pizza .....	A-10
Penmor Lithographers .....	C-6
PERFORMANCE! AD SALES .....	C-1
Platz Associates .....	C-10
Rinck Advertising .....	A-9
Roopers .....	A-10
Roy I. Snow, Inc .....	A-2
Roy I. Snow, Inc .....	C-1
Safe Voices .....	C-2
Sam's Italian Foods, Inc .....	C-5
Schooner Estates .....	C-8
Studio 88 .....	A-6
The Pub at Baxter Brewing .....	C-4
The Public Theatre .....	A-3
Visbaras Law LLC .....	C-6
warp + weft .....	C-5

**PLATZ ASSOCIATES**

*Since 1980*

**Architects • Engineers**

**Construction Managers**

***Supporting the Arts  
in our community  
for over 35 years.***

**TWO GREAT FALLS PLAZA • AUBURN, MAINE • 04210 • 207 784 2941**



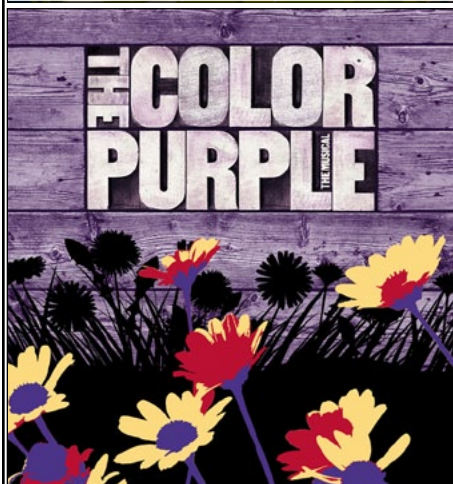
# 2022 SEASON



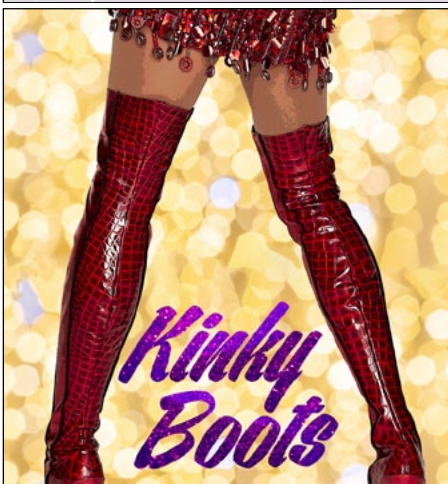
JUNE 8 – 25



JUNE 29 – JULY 16



JULY 20 – AUGUST 6



AUGUST 10 – 27

**SAVE** up to **40%** as a Season **SUBSCRIBER**  
Subscriptions on sale now.

**207-725-8769**  
MSMT.ORG  
BRUNSWICK, ME

**MSMT**  
MAINE STATE MUSIC THEATRE EST. 1959

[back to Directory Listing](#)



# 17 Ways to

# HAVE FUN in L/A

- Androscoggin Historical Society
- Auburn Public Library
- Bates Dance Festival
- Bates College Museum of Art
- Community Little Theatre
- Franco-American Collection at USM
- Franco-Trail L/A
- Gendron Franco Center
- L/A Arts
- Lewiston Public Library
- Maine Music Society
- Midcoast Symphony Orchestra
- Museum in the Streets trail
- Museum L-A
- Olin Concert Series
- The Public Theatre
- The Public Art trail

