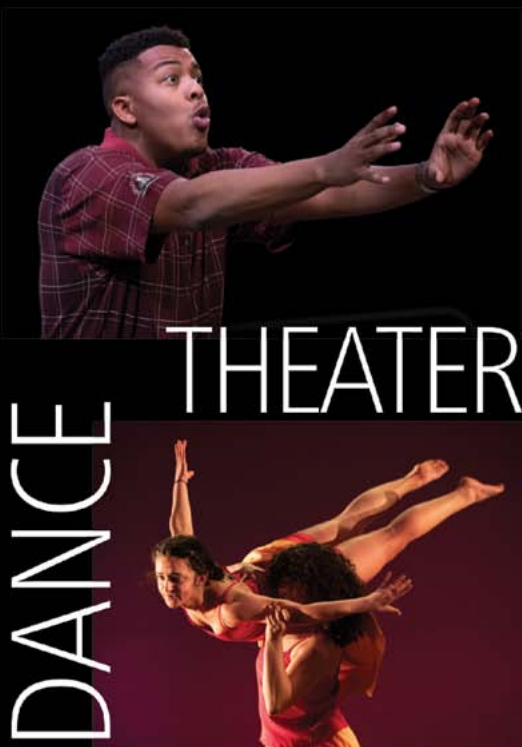




the PUBLIC THEATRE

PERFORMANCE! 2022-23

A Playbill for The Public Theatre and Maine Music Society



JOIN US FOR THE 2022 SEASON

HURRICANE DIANE

By Madeleine George

Directed by Kush Sharma '23

An Honors Thesis production in Directing

GANNETT THEATER

NOV 3 @ 7:30PM, NOV 4 @ 7:30PM

NOV 5 @ 5:00 PM, NOV 6 @ 2:00PM

NOV 7 @ 7:30PM

In this Obie-winning comedy with a twist, Pulitzer Prize finalist Madeleine George pens a hilarious evisceration of the blind eye we all turn to climate change and the bacchanalian catharsis that awaits us, even in our own backyards.

ANANYA DANCE COMPANY

DASTAK, I WISH YOU ME

SCHAEFFER THEATRE

MON, NOV 7 @ 7:30PM

In partnership with the Bates Dance Festival, the Department of Theater and Dance is pleased to welcome Ananya Dance Theatre this fall for their performance of *Dastak: I Wish You Me*, a meditation on borders, loss, belonging, home, and liberation.

THE MARCY PLAVIN FALL DANCE CONCERT

SCHAEFFER THEATRE

SAT, DEC 3 @ 5:00PM

SUN, DEC 4 @ 2:00PM

MON, DEC 5 @ 7:30PM

This concert will feature works from faculty and nationally known repertory artists, including Darrius Strong and Ananya Chatterjea.

MUCH ADO ABOUT NOTHING By William Shakespeare

Directed by Prof. Tim Dugan

SCHAEFFER THEATRE

THU, MARCH 16 @ 7:30PM

FRI, MARCH 17 @ 7:30PM

SAT, MARCH 18 @ 5:00PM

SUN, MARCH 19 @ 2:00PM

MON, MARCH 20 @ 7:30PM

Hilarity abounds in Messina where everyone can see that confirmed bachelor Benedick and headstrong Beatrice are meant for each other—except for Benedick and Beatrice themselves! Or at least they won't admit it. While their friends try to trick the bickering pair into admitting they're in love, their young sidekicks Hero and Claudio start a romance of their own. But will false accusations, broken promises, and even Dogberry (the goofy constable) prevent a happy ending? One of the greatest romantic comedies ever, Shakespeare offers us witty wordplay that dazzles and a raucous celebration that uplifts!

SPRING DANCE CONCERT

SCHAEFFER THEATRE

FRI, APRIL 7 @ 7:30PM

SAT, APRIL 8 @ 5:00PM

SUN, APRIL 9 @ 2:00PM

MON, APRIL 10 @ 7:30PM

An annual favorite, this concert features the work of senior dance majors and independent study projects.

Bates Theater+Dance

Ticket information can be found at: batestheateranddance@eventbrite.com

the PUBLIC THEATRE

2022-23

Morning After Grace

Sep 16-25 by Carey Crim

A hilarious and heartfelt new comedy for Baby Boomers. Three strangers unexpectedly enter each other's lives in invaluable ways, truthfully tackling the topics of love, loss, sex, aging parents, and even medical marijuana munchies.

The Victorian Ladies' Detective Collective

Nov 4-13 by Patricia Milton

It's "Sherlock Holmes" meets "Arsenic & Old Lace" in this entertaining murder mystery with a modern female sensibility. Two strong-willed sisters in Victorian London team up with a cheeky American actress and set off to solve a crime.

Pilgrims Musa & Sheri in the New World

Mar 3-12 by Yussef El Guindi

A sweet-natured immigrant cab driver and a sassy American waitress negotiate the twists and turns of love and cultural differences in this smart, funny and thought-provoking romantic comedy.

Jeeves and Wooster in 'Perfect Nonsense'

Apr 21-30 by The Goodale Brothers

Inspired by P.G. Wodehouse's hilarious stories of Bertie and his trusted valet Jeeves, this delightfully silly comedy will tickle the funny bone in audiences of all ages.

POLKADOTS: THE COOL KIDS MUSICAL

May 19-21 by Tunstall, Lyons & Borowsky

When 8-year-old Lily moves to a new town, she faces the challenge of being the first Polkadot in an all Square school. This delightful musical with a message combines catchy songs and the humor of a Pixar film into entertaining family fun for ages 4 and up!



ThePublicTheatre.org

782-3200 31 Maple St, Lewiston

Come PLAY with us!



Roy I Snow, Inc.

ELECTRICAL CONTRACTORS

Commercial Residential Industrial

Serving Maine since 1947 RoySnow.com 207.782.3734

Proudly
supporting the
arts
in our
community.

**BERMAN &
SIMMONS**
TRIAL ATTORNEYS

PORTLAND

LEWISTON

BANGOR

800 244 3576

bermansimmons.com



THE Maine Music Society

2022
2023
Season

ARTISTIC DIRECTOR
Dr. Richard Nickerson

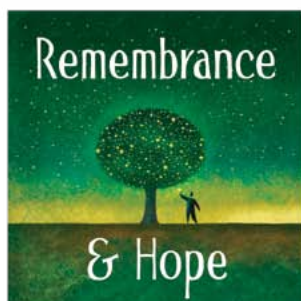
SEASON SPONSORS
Hardy Wolf & Downing
Ladd Foundation



Saturday, November 5
7:30 pm



Sat., Dec. 10 • 7:30 pm
Sun., Dec. 11 • 3:00 pm



Sat., March 11 • 7:30 pm
Sun., March 12 • 3:00 pm



Sat., May 13 • 7:30 pm
Sun., May 14 • 3:00 pm

FRANCO CENTER • LEWISTON

For tickets call 333-3386 or visit www.mainemusicsociety.org

Entertainment on the Riverfront

Franco Center Box Office 207-689-2000



The Male Intellect: An Oxymoron?

International comedy

Thursday, Oct. 6



Sights & Sounds of Christmas

Spectacular light show

Dec. 17 & 18



Echoes of Floyd

*Pink Floyd Tribute
Band*

Saturday, Oct. 8



Schooner Fare

*Long-time
favorite Band*

Friday, Feb. 3



Fright Night

*Walk through our
creepy crypt*

Oct. 25, 26, 27



Josee Vachon

*Popular French
performer*

Saturday, March 4



Magic of the Steelgraves

*Family-friendly magic
and illusion show*

Saturday, Nov. 12



Studio Two—A Beatles Tribute

*The Beatles Before
America*

Friday, March 31



Runnin' Down a Dream

Tom Petty Tribute Band

Saturday, Nov. 19



Silver Circus

*Family-friendly magic
show*

Saturday, April 8



Don Campbell Christmas

Festive holiday concert

Friday, Dec. 16



La Rencontre

Lunch & Entertainment

**Sept. 8, Dec. 8, March 9,
June 22**

**46 Cedar Street
Lewiston, Maine
FMI: francocenter.org**

On the Riverfront

**FRANCO
CENTER**



Performing Arts & Entertainment

MIDCOAST SYMPHONY ORCHESTRA

2022 – 2023 SEASON

Concerts are held at 7:00 p.m. at the Franco Center, Lewiston

Season Opener

October 29, 2022

Seven O'Clock Shout
Coleman

Piano Concerto No. 2
Shostakovich
Chiharu Naruse, Pianist

Symphony No. 4 Brahms

Favorite Music for All Ages

January 14, 2023

Hungarian March
from *The Damnation of Faust* Berlioz

Tubby the Tuba Kleinsinger
Featuring Douglas Ertman & Denise Shannon

Danzon No.2 Marquez

Yankee Doodle Arr. Gould
Joel Preston, "Conduct the Orchestra" Winner

Piano Concerto in A Minor Grieg
Mesa Schubeck, Pianist and Concerto Winner

Capriccio Espagnol Rimsky-Korsakov

Tried and True, Plus a Newer Crew

March 18, 2023

Symphony No.35 in D major,
K.385, "Hafner" Mozart

Concerto in D Minor
for Two Violins Bach
*Eva Grusser & Roban Smith,
Violinists*

Propellers in the Sun Porter
Symphony No.3 Price

French Impressions

May 20, 2023

Hiroya Miura, Guest Conductor

D'un matin de printemps
Boulanger

Les Indes Galantes, Suite No.1
Rameau/Arr. Dukas

La Valse Ravel

Pictures at an Exhibition
Mussorgsk/Orch. Ravel

'70s Extravaganza Classical Night Fever

Saturday, June 10, 2023 • 7:00 p.m.

MSO teams up with *Motor Booty Affair*, Maine's own 70s disco/funk tribute band. This world-class performance transports you on a journey through some of the best hits of the 1970s.

For ticket information visit:
MidcoastSymphony.org
or call: 207-481-0790

Sit back,
relax,
and enjoy
the show!

At Androscoggin, we understand and appreciate the joy performers bring to the people in our communities and are proud to support the arts.

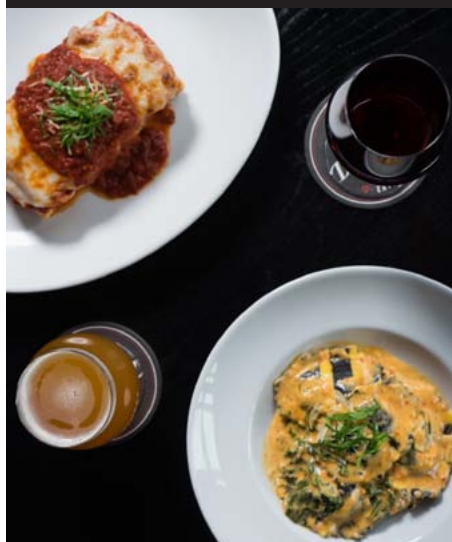
**Androscoggin
Bank**

Member FDIC

A Banking Force For Good



Dinner and a concert in perfect harmony.



150 MILL STREET, LEWISTON
WWW.DAVINCISEATERY.COM

DaVinci's
» EATERY «



Leary & DeTroy

ATTORNEYS AT LAW

- Workers Compensation
- Criminal Law
- Personal Injury
- Divorce & Custody
- Social Security Disability
- Disability Discrimination

Justin W. Leary
Benjamin E. DeTroy

90 Main Street • Auburn
782-3275
www.LearyandDeTroy.com
Free Initial Consultation



Learn your rights and obtain experienced, effective legal representation



- NETWORKS
- SALES
- SECURITY
- REPAIR



"Honest Job, Honest Price"

1485 Lisbon Street
Lewiston Maine 04240
info@tcpme.com

t. 207.783.7232
f. 207.783.7260
Weekdays 9AM – 5PM
www.tcpme.com
www.facebook.com/tcpme



WWW.DIRIGOFUCU.COM



STUDIO 88 MUSIC SCHOOL

SUZUKI TALENT EDUCATION • PIANO AND VIOLIN



Rachel Eastman Feeley
Martha Gail Feeley

Studio88music@aol.com
207-344-9145





ANDROSCOGGIN
Home Healthcare
+ Hospice

Proudly Supporting the Arts

Androscoggin.org

The Cote Corporation



- Crane & Rigging Services • Trucking • Millwright
- Machinery Moving • Warehousing
- Cranes up to 300 Ton Capacity
- Tip Height 361'

DEDICATED TO EXCELLENCE!

www.cotecrane.com • 800-696-6282
2980 Hotel Road, Auburn, ME 04210

Good Health to you
and the Planet too!

Serving Maine
Since 1970

AXIS NATURAL FOODS

120 Center Street Plaza
Auburn, Maine 04210
(207) 782-3348
axisnaturalfoods.com

Natural & Organic Foods • Vitamins • Herbal Products
Books • Body Care • Organic Produce

A Maine Pioneer in Organic Farming...

Earth Day Every Day!
Organic Wine and Beer • Home Brewing • Gluten Free Items
Organic Produce • Monthly Specials



132 Lincoln St.
Lewiston, Maine 04240
(207) 783-8593

130 Western Ave.
South Portland, Maine 04106
(207) 775-5381

www.fxmarcotte.com

A Commitment To Excellence



Norman Hanson & DeTroy is
a proud supporter of The Maine
Music Society, The Public Theatre
and the arts community in Maine.

nhdlaw.com

Attorneys at Law

**NORMAN
HANSON
DETROY**

Experienced. Efficient. Effective.

Portland (207) 774-7000

Lewiston (207) 777-5200

If

YOU LOOK CLOSELY

you'll see

the Arts
change
everything.



113 Lisbon Street
Lewiston, Maine 04240
(207) 755-9470
www.rinckadvertising.com

OUELLETTE & ASSOCIATES, P.A.

CERTIFIED PUBLIC ACCOUNTANTS

1111 Lisbon Street
Lewiston, Maine 04240
(207) 786-0328 • Fax (207) 783-9377
www.oacpas.net

- Accounting
- Auditing
- Tax Services
- Bookkeeping Services
- Consulting Services
- Business Valuation

Ed Buschmann's
DUN ROAMIN' TREE FARM, LLC


Fresh Christmas Trees
Choose 'n Cut
& Pre-Cut Available

75 Dyer Road
Lewiston, Maine
04240
207 - 577-5878


Maine Firewood
Dry Winter Hardwood
- Stoves and Fireplaces
Dry Summer Softwood
- Fire Pits and Camping

THERE WILL BE DRAMA

AND MUSIC AND DANCING
FOLLOWED BY COCKTAILS
AND CELEBRATION



AUBURN

301 Main Street, Auburn | 783.9098
545 Minot Ave, Auburn | 783.2047

LEWISTON

794 Sabattus Street, Lewiston | 783.6353
686 Main Street, Lewiston | 344.1200
1420 Lisbon Street, Lewiston | 333.3095

OXFORD

980 Main Street, Oxford | 539.6072

EMERSON



CHEVROLET



BUICK®

946 Center St. • Auburn

emersonchevy.com

(207) 784-3503 • (800) 696-0766



Lisa Laliberte, Agent

224 Russell Street
Lewiston, ME 04240
Bus: 207-783-3332
lisa.laliberte.gqph@statefarm.com



~FOOD & SPIRITS~

Serving the L/A area since 1985!

Full-Service Family Restaurant

Dining Room and Take-Out Hours

11:00 AM - 9:00 PM Daily

Hot and Cold Sandwiches • Pizza

Pasta • Desserts • Lunch • Dinner

Full-service Bar • Maine Micro-Brews

Gift Certificates

85 Center Street • Auburn, Maine

Call us at 207-784-8221

patsauburn.com



Online Banking
Mobile Banking
Loans
Checking
Savings
Credit Cards
And more!



555 Sabattus Street | 831 Minot Avenue
Lewiston, ME 04240 | Auburn, ME 04210
(207) 783-2071

Serving our
community since 1938



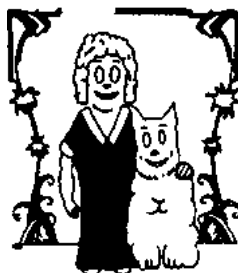
mainefamilyfcu.com

@Mainefamilyfcu



Orphan Annie's Antiques

New England's largest selection of Art Deco and Art Nouveau. Tiffany, Steuben, Gallé, and other prominent French and American art glass. Furniture, lighting, and vintage clothing. Large collection of estate and costume jewelry. Wide selection of dinnerware, including Fiesta and Depression glass. Featured in Down East, March '96. Open Mon.-Sat., 10-5; Sun. 12-5. Three floor warehouse sale every Monday 10:00 am - 1:00 pm at 110 Turner Street.



96 Court Street (across from the courthouse), Downtown Auburn • 207-782-0638
orantiques@myfairpoint.net • OrphanAnniesMe.net

Hammond Lumber Company

22 LOCATIONS ACROSS MAINE & NEW HAMPSHIRE

AUBURN • BANGOR • BAR HARBOR • BELFAST • BELGRADE
BLUE HILL • BOOTHBAY HARBOR • BRUNSWICK • BUCKSPORT
CALAIS • CAMDEN • CHERRYFIELD • DAMARISCOTTA • ELLSWORTH
FAIRFIELD • FARMINGTON • GREENVILLE • MACHIAS • PORTLAND
ROCHESTER (NH) • ROCKLAND • SKOWHEGAN

WWW.HAMMONDLUMBER.COM

Kitchen, Bath & Flooring Center

A Division of Hammond Lumber Company

- ✓ FRIENDLY AND PROFESSIONAL SALES STAFF
- ✓ COMPLETE SHOWROOM WITH FUNCTIONING DISPLAY
- ✓ FREE 3D DESIGN SERVICES WITH PURCHASE OF MATERIALS

**Revitalize the
Heart of your Home.**



YOUR SMILE. OUR PRIORITY.

Maple Way Dental Care is dedicated to the health and vitality of your smile. Drs. Rose, Reyes, Malang, Priest, and the rest of the team are committed to meeting your preventative, restorative and cosmetic dental needs.

We want you to look and feel your best!

From check-ups to more advanced procedures,
our priority is to keep you smiling.

Maple Way Dental Care will develop a treatment plan that fits
your unique needs. Give us a call to schedule an appointment!



Welcoming new patients. Emergencies seen the same day.
Most insurance plans are welcome.

Rosemarie G. Sheline, DDS • Cherith Reyes, DMD
Jose R. Malang, DMD • Christopher Priest, DMD

110 Canal Street, Lewiston

Maplewaydentalcare.com • 207-784-2211



The Public Theatre was founded to bring high quality professional theatre to the people of Maine, at an affordable price. We strive to make our presentations accessible to all, especially those less likely by tradition or inclination to attend live theatre. In choosing our season, we look for plays that speak from the heart; that are life-affirming and uplifting even when the subject matter is dark or painful; that use our language in powerful and provocative ways; that invite the audience to see their world in a new way. Artistic excellence is central to the mission of The Public Theatre.

The Public Theatre is a member of Theatre Communications Group (TCG), the national organization for the American theatre.

Board of Directors

Kari Grant-GragonPresident
Jennifer Malloy..... Vice President/Secretary
Thomas H. PlatzTreasurer

Deana Albert	Heidi McCarthy
Barbara Helen Baker	Colby Michaud
Peter Kowalski	Christopher Schario

Associate Members: Sue Brown, Linda Chiaravelotti, Marilyn Closson, Mary Ellen Costello, Kathy Gleason, Dina Jackson, Kathy Lawrence, Ben & Bonnie Lounsbury, Elaine Makas, Alice Mogensen, Chip Morrison, Carol Murrell Sheri Olstein, Jim Pittman, Polly Robinson, Cathy Snook, Susan Weiss

Staff

Christopher ScharioExecutive/Artistic Director
Janet Mitchko Co-Artistic Director
Carol Ham..... Business Manager
Jennifer Madigan Asst. Director Marketing/Development
Adam P. Blais Education/Development Director
Dmitri Kubbs.....Technical Director
Kathy Lawrence, Reen Robillard Box Office Staff
Ellie Dow..... House Manager
Liz Carlson Dramaturg/Literary Advisor
Ben Lounsbury..... Video Archivist

THE PUBLIC THEATRE takes pride in recognizing our season sponsors. We seek to develop a partnership with local businesses working together for the enrichment of the Lewiston-Auburn area. The following businesses have joined us in this partnership. If you would like to see your company listed here, please contact us regarding sponsorship opportunities.

SEASON UNDERWRITERS

[Austin Associates](#)
[Maine Magazine](#)
[Platz Associates](#)

[Sun Journal](#)
[WOXO 92.7 & WIGY 105.5/95.7](#)
[The Shubert Foundation](#)

CORPORATE SHOW SPONSORS

[Androscoggin Bank](#)
[Auburn Manufacturing](#)
[Bangor Savings Bank](#)
[Baxter Brewing, Co.](#)
[Berube's Complete Auto Care](#)
[Butler Bros.](#)
[Cross Insurance](#)
[Evergreen Subaru](#)
[LA Metro Magazine](#)

[Lee Auto Malls](#)
[Mechanics Savings](#)
[NAPA Coastal Auto Parts](#)
[Norway Savings Bank](#)
[Twin City Times](#)
[Visbaras Law / Excalibur Title, LLC](#)
[Warp + Weft](#)

EDUCATIONAL UNDERWRITERS

[Androscoggin Bank](#)
[Cross Insurance](#)
Helen & George Ladd Charitable Corp.

[Maine Arts Commission](#)
Margaret E. Burnham Charitable Trust
[Onion Foundation](#)

EDUCATION PARTNERS

[Carrabassett Coffee Company](#)
[Hilton Garden Inn - Auburn Riverwatch](#)
[Key Bank](#)

[Lewiston / Auburn Children's Foundation](#)
[Liberty Mutual Insurance](#)
[Ramada Hotel & Conference Center](#)

SEASON SUPPORTERS

[Auburn-Lewiston YMCA](#)
[Evergreen Custom Printing](#)
[The Italian Bakery](#)
[F.X. Marcotte Furniture](#)
[Homelight, Inc.](#)
[Lisa Laliberte State Farm Insurance*](#)

[Marden's Discount](#)
[Sherwin-Williams](#)
[Roy I. Snow, Inc.](#)
[The Vault](#)
[YWCA of Central Maine](#)

**performance sponsors*

GRANT SUPPORT

[Actors' Equity Foundation](#)
[Davis Family Foundation](#)

[Maine Community Foundation](#)
[- Maine Theater Fund](#)



The Victorian Ladies' **DETECTIVE** Collective

by Patricia Milton

Directed by
Christopher Schario

Stage Manager
Katie Scarlett Graves*

Costume Design
Anne Collins

Set Design
Jennifer B. Madigan

Lighting Design
Erin Fauble

Original Music & Sound Design
Scott O'Brien

CAST

(in order of appearance)

PC Crane/Jasbry Warham-Wynn/Toddy	Mathew Zimmerer*
Loveday Fortescue	Robyne Parrish*
Valeria Hunter	Joyce Cohen*
Katherine (Katie) Smalls.....	Courtney Thomas*

LOCATION

The Parlor of the Hunter Lodging House, in the Battersea area of London.

TIME

Tuesday and Wednesday, Fall 1893

There will be a 15 Minute Intermission

"The Victorian Ladies' Detective Collective" premiered by Central Works at the Berkeley City Club on March 19, 2021.

** Members of Actors' Equity Association, the union of professional actors and stage managers in the United States.*

The Victorian Ladies' Detective Collective is Sponsored by



SAFETY APPAREL



MECHANICAL INSULATION



WELDING

Ami Auburn
Manufacturing, Inc.

**Our All-Star Cast makes
textiles that protect industry
from heat and fire. Please
contact us if you'd like to join
this stellar team!**



Located in Auburn and Mechanic Falls
We make locally and ship globally

www.auburnmfg.com
800.264.6689

U.S. Manufactured

The Victorian Ladies' Detective Collective is Sponsored by



We're proud to support the
**The Victorian Ladies'
Detective Collective**
at The Public Theatre

Bangor
Savings Bank

You matter more.®

Member FDIC

**Locations Throughout Northern New England
1.877.Bangor1 | www.bangor.com**

The Victorian Ladies' Detective Collective is Sponsored by

Where are the

CHAMPIONS *of* LA?

LEWISTON AUBURN, MAINE

If you are a champion of
our communities, you
should be advertising in
the magazine that keeps
LA Moving Forward!



Join our family of advertisers
Contact us TODAY!
207-783-7039
LAMetroMagazine.com

warp+weft

The arts bring
texture to
our lives and
community.



Brand with texture.

f in  warpweftbranding.com



MATHEW ZIMMERER (PC Crane/Jasbry Warham-Wynn/Toddy) *The Victorian Ladies' Detective Collective* marks Mathew's debut with The Public Theatre of Maine. He has performed in Washington, Texas, and Virginia as well as Arizona where he currently makes his home. Nice to visit a place where the leaves change color in autumn! Some favorite recent roles include Gyp DeCarlo in *Jersey Boys* with The Phoenix Theatre Company, Stone in *City of Angels* with Theaterworks, and Walt in *A Public Reading of an*

Unproduced Screenplay About the Death of Walt Disney with iTheatre Collaborative. Other credits: *One Flew Over the Cuckoo's Nest* (MacMurphy), *Ragtime* (Father), *Big* (MacMillan), *Romeo & Juliet* (Capulet), & *The Music Man* (Harold Hill) Theaterworks; *Comedy of Errors* (E. Antipholus) & *Shear Madness* (Eddie) The Phoenix Theatre Company; *Lobby Hero* (Bill) & *Blue Orange* (Bruce) Actors Theatre of Phoenix; *The Price* (Victor), *The Chosen* (Reuven), & *The Old Man's Friend* (Bobby) Arizona Jewish Theatre Company; *Spellbound: a musical adaptation of Cymbeline* (Cloten) Southwest Shakespeare; *The Last Romance* (Ralph) Stage Left, and *Bill W. and Dr. Bob* (Bill W.) Broadway Palm West. Favorite roles as a younger man (ahem) include these: *The Glass Menagerie* (Jim), *She Stoops to Conquer* (Hastings) *I'm Not Rappaport* (Gilley), *A Midsummer Night's Dream* (Demetrius), *Romeo & Juliet* (Tybalt), *Smoke on the Mountain* (Dennis), and *Godspell* (Judas). Many thanks to The Public Theatre of Maine for this fun opportunity, and abundant love as always to Mary and the boys!



ROBYNE PARRISH (Loveday Fortescue) is happily returning for her sixth production at the Public, including: *The Revolutionists*, *Vanya and Sonia and Masha and Spike*, *The Book Club Play*, *Miss Witherspoon* and *Rough Crossing*. Last seen Off-Broadway in the world premiere of the play *Strings Attached* by Carole Bugge with Pulse Theatre at Theatre Row. Recent TV and Film work: *A Man Called Otto* with Tom Hanks, Directed by Marc Forster (Christmas 2022), *The Crowded Room* Apple TV, (2023), *Gossip Girl* reboot now streaming on HBO Max, Feature *Hail Mary* opposite Tina Benko and starring Max Cassella (in post) and *Borderland the Opera* Directed by Mia Walker/Written by Natalie Elizabeth Weiss. Off Broadway at The York, The Mint, Project Y, Out of the Box, Indieworks, NYMF, Musicals Tonight!, The Chain and Sonnet Rep. Regional: *Matilda* as Mrs. Wormwood (Virginia Stage), *The Dino Musical* as Carlotta (The Arden), *Steel Magnolias* as M'Lynn (Theatre Raleigh), *The Next Fairy Tale* (Pittsburgh CLO) and more at robyneparrish.com. Other: Opposite Richard Kind and Steve Guttenberg in Feature *Help Me, Help You*. AEA/SAG-AFTRA. Dramatist Guild. Robyne is an actor/director. Graduate of UNCSA. She is overjoyed to return to one of her favorite theatre families for this delicious romp. This is for Dad.



JOYCE COHEN (*Valeria Hunter*) is happy to be back at TPT where she previously appeared in *Middletown*, *Humble Boy* and *The Midvale High School Fiftieth Reunion*. She recently finished an off-Broadway run of the World Premiere of *This Space Between Us*. Broadway: *Once A Catholic*. Off-Broadway: *Women Without Men*, *John Ferguson*, *Living At Home*, *Diamond Studs*, *America is Hard to See* ("best of Edinburgh Festival Fringe, 2019" - Fest Magazine). Regional Theaters: Syracuse Stage, Denver Center Theatre, Pioneer Theatre, Geva Theatre, Cleveland Playhouse, PA Shakespeare Festival, Peterborough Players, Cincinnati Playhouse in the Park, People's Light and Theatre Co., Salt Lake Acting Co., Utah Shakespeare Festival, Martha's Vineyard Playhouse. Film: (selected) *Changing of the Leaves*, *Losing Addie*, *The Dance*, *Independence Day*, *SLC Punk*, *Live Love*, *Pirates of the Great Salt Lake*, *Adventures of Food Boy*. Television: (selected) *A Picture Perfect Holiday*, *Broadcasting Christmas*, *Christmas Under Wraps*, *High School Musical*, *Pixel Perfect*, *Dear Dumb Diary*, *Read It and Weep*, *Unabomber: The True Story*. Series: (selected) *Granite Flats* (recurring), *Touched By An Angel*, *Everwood*, *Promised Land*, *Archie Bunker's Place* (recurring). Festival of New Theatre-Geva Theatre Center; New Play Summit-Denver Center Theatre; Cleveland Playhouse: New Ground Theatre Festival; Sundance Institute Film & Playwrights Lab. Actressjoycecohen.com



COURTNEY THOMAS (*Katherine (Katie) Smalls*) is excited to be returning to The Public Theatre after making her professional theatre debut in *The Book Club Play* directed by Christopher Schario in 2012. She is currently based in Los Angeles. Selected credits include Off-Broadway: *Eve Ensler's Emotional Creature* (Signature Theatre), *Surely Goodness & Mercy* (Keen Company). Regional: *Crownation* (Kirk Douglas Theatre), *The Mountaintop* (Theaterworks Hartford). Courtney holds a BFA from Howard University's

Chadwick Boseman College of Fine Arts & MFA from American Conservatory Theater .

PATRICIA MILTON (*Playwright*) is a Resident Playwright at Central Works in Berkeley, CA. Her plays have been performed in New York, Boston, Istanbul, San Francisco, and places in between. Her values are: laughter, candor, artistic excellence, determination, integrity, generosity, and feminism. Her plays include *Hearts of Palm*, *Moments of Truth*, *Solving Sunflowers*, *Believers*, *Reduction in Force*, *The Only Virgin in Jubilee County*, *Murder Mary!*, *Strange Bedfellows*, *Porn Yesterday*, and *Busybody*. Her short plays have received more than 120 productions and readings around the US and internationally. Patricia serves as the Dramatists Guild's Northern California Representative. She is a member of Playwrights Center, Playwrights Center of SF, Central Works Writers Workshop, and Theatre Bay Area.



CHRISTOPHER SCHARIO - (*Executive/Artistic Director*) has been Artistic Director of The Public Theatre since 1993. His adaptation of *A Christmas Carol*, published by Dramatists Play Service in 1996, was developed for The Public Theatre and has enjoyed successful productions at professional and amateur theatres throughout the world. In New York he directed for Roundabout Theatre, Westbeth Theatre, Spectrum Stage, American Academy of Dramatic Arts, Drama Project and Madison Avenue Theatre. Regional theatre directing includes Alabama Shakespeare Festival, Boulder Ensemble Theatre, Kentucky Repertory Theatre, Toledo Repertory Theatre and Millbrook Playhouse. He has acted Off-Broadway, on national tours, regional theater, summer stock, dinner theater, films, soaps and commercials. He has taught at Carnegie-Mellon University, University of Colorado, University of Tennessee, American Academy of Dramatic Arts, as well as privately in New York. He received a BFA in Acting from Ohio University and an MFA in Directing from Carnegie-Mellon University.



JANET MITCHKO - (*Co-Artistic Director*) As Co-Artistic Director of The Public Theatre, Janet has spent the past 30 years making theatre in Maine as both a director (*Morning After Grace*, *Dancing Lessons*, *Middletown*, *Sexy Laundry*, *Hound of the Baskervilles*, *Around The World in 80 Days*, etc) and actress (*Be Here Now*, *A Doll's House, PART 2*; *The Ladies Foursome*; *Good People*; *Time Stands Still*; etc), and is proud to call The Public Theatre her artistic home. Prior to life in Maine, Janet lived in NYC earning her living as a professional actress, voice-over talent, and

director as well as teaching acting at The American Academy of Dramatic Arts. She is a graduate of the acting program at Carnegie-Mellon University, and the oh-so-proud mother of Emily.

KATIE SCARLETT GRAVES - (*Stage Manager*) Katie is very excited to be making her Maine Debut here at The Public Theatre. Katie serves as the Resident Production Stage Manager at the Wellfleet Harbor Actors Theatre on Cape Cod. She has also worked up and down the eastern coast in Naples FL, Atlanta GA, and Boston, MA. Katie's recent credits include, *The Revolutionists*, *Gary! A Sequel to Titus Andronicus*, *Marry Me A Little*, *Straight White Men*, *Baskerville: A Sherlock Holmes Mystery* and *Nat Turner in Jerusalem*. When Katie is not Stage Managing, she works as a Freelance Theatre Technician.

DMITRI KUBBS - (*Technical Director*) is excited to be building scenery again.. He first came to New England in 2000, working at numerous regional theaters. His work has been seen on Broadway and the golf channel. During a

long hiatus from theater he's done custom fabrication, taught environmental education, managed petting zoos, and most recently been raising his son Rowan who also likes to help out at The Public Theatre. He resides in Auburn with his family, animals and a treasured collection of aging iron equipment.

JENNIFER B. MADIGAN - (*Set Designer*) This is her 15th set design for The Public Theatre. The last design was *I and You* which was closed due to the pandemic and finally presented via streaming in March 2021. Her favorites are probably *Last Gas*, *Wait Until Dark*, *Red*, *Indoor/Outdoor*, and *Dr. Jekyll & Mr. Hyde*. She has also been the Scenic Artist for several shows designed for The Public Theatre by Kit Mayer, including *Screwball Comedy*. The rest of the time at The Public Theatre, she uses her vast array of creative and technical skills as the Asst. Director of Marketing & Development. Jennifer has a BA in Technical Theater from the University of Maryland, where she studied Scene Design and Sound Design.

ANNE COLLINS - (*Costume Designer*) is delighted to be designing costumes for *The Victorian Ladies' Detective Collective*. This follows *Dancing Lessons* last year and *The Revolutionists* a few seasons ago. This summer she designed costumes for the original production of *Caravan of Dreams* at The Desert of Maine by the Ziggurat Theatre Ensemble, *As You Like It* for Camden Shakespeare Festival, and *Bingo Queen* for John Burstein to benefit Meals on Wheels.

ERIN FAUBLE - (*Lighting Designer/Master Electrician*) heralds from the little town of Anderson, SC. After graduating with a BA in Musical Theatre from Converse College, Erin went on to do electrician work at Flat Rock Playhouse in NC. Eventually she moved to Maine in order to Master Electrician and design at Theater at Monmouth (*An Iliad*, *Pandora's Suitcase*, *A Midsummer Night's Dream*) and for The Public Theatre (*Be Here Now*). These days she aspires to be both a professional Lighting Designer and to be a successful mother to her fur-baby—a small, bossy gray cat with enormous green eyes.

SCOTT O'BRIEN - (*Composer/Sound Designer*) has composed, designed and engineered theatre and dance for a variety of Off-Broadway and regional theaters across the US. He was the Resident Composer/Sound Designer for American Globe Theatre from 2000-2014, the Chautauqua Theater Company from 2006-2009, the Stella Adler Studio of Acting from 2011-2012, and the Adirondack Theatre Festival from 2013-2015. He has lectured on Sound Design at SUNY-Rockland, Pace University, Fairleigh Dickinson University, The Duke Ellington School for the Arts and Montclair State University (where he was the head of the Sound Design Program from 2015-2019). He was the Resident Composer/Sound Designer for the Great River Shakespeare Festival in Winona, MN for their 2019 and 2021 seasons and his latest projects include a podcast version of the GRSF production of *MacBeth*, and *Black Santa For You*, a YouTube-based holiday web series for children. Film credits

include: *Eleanor*; *Godmother of American Fashion* (for VANITY FAIR FILMS) and *Phoenix Rising*; *The Silent Victims Speak*, an award-winning documentary for Noblevision Productions. His production company and studio Duck & Trout Music are based in Gardiner, ME. This marks his first season collaborating with The Public Theatre.

AUGUST THORNTON - (*Company Manager*) is a resident of Jay, Maine and a recent graduate from the University of Southern Maine where he was a major in theatre with a focus in performance. At USM he got to play characters such as Colonel Mustard in, *Clue*, Ellard in, *The Foreigner*, Tereus in *Love of the Nightingale* and Mr. Loyal in *Tartuffe*. Outside of USM he has been blessed to have taken on roles at other theaters such as, Billy Ray Jr. in, *On Golden Pond* at the Mystic Theatre, Jake Donahue in *Papermaker* at OHMPAA Theatre, and most recently as Pumblechook, Drummle, and Wemmick in *Great Expectations* at Lakewood Theatre. Although August may not be performing this year, he is extremely grateful that The Public Theatre is providing him with this amazing opportunity where he can broaden his horizon in the world of the performing arts.

JACOB PRIBILSKY - (*Board Operator*) is a musician and sound production enthusiast from Walla Walla, Washington. He is currently a senior at Bates College, studying history and music with a focus on country music and culture. Jacob has worked for the college theater department since his first year at Bates as a light designer, board operator, crew member, and set builder. After graduating, he plans on moving to Asheville, NC in pursuit of a degree in music technology.



ACTORS' EQUITY ASSOCIATION was founded in 1913 to protect Actors from the severe mistreatment that permeated the industry at that time. Since its inception Equity has had only nineteen Presidents. Its current President is Kate Shindle. The Association consists of over 51,000 distinguished stars and other professional Actors and Stage Managers who work nationwide, from New York's Broadway to Los Angeles, from Minneapolis to Miami Beach, in regional, stock and dinner theatre, and in theatres for young audiences which build the audiences of tomorrow. These Actors and Stage Managers are committed to working in the theatre as a profession, not an avocation, and bring to you the finest professional training and experience. By presenting Equity productions, this theatre offers to you, our audience, the best entertainment presented by the finest quality Actors and Stage Managers that your admission dollars can buy.

2022-23 Season Underwriters



AUSTIN ASSOCIATES
CERTIFIED PUBLIC ACCOUNTANTS

Two Great Falls Plaza
Auburn, ME 04210
1-800-605-9263
austinpa.com

maine.
THE MAGAZINE

themainemag.com

Subscribe.
\$60/year for both



MHD
MAINE HOME + DESIGN

mainehomedesign.com

PLATZ ASSOCIATES
Since 1980
Architects • Engineers
Construction Managers

Two Great Falls Plaza
Auburn, ME 04210

207-784-2941
platzassociates.com

Sun Journal **175** years

*Connecting you with
your community*

sunjournal.com



The Public Theatre's Assisted
Listening System
was funded in part by
Dr. & Mrs. Ben Lounsbury
and a grant from the
Maine Arts Commission,
an independent state agency
supported by the
National Endowment for the Arts.



We are pleased to offer
hearing assistance free of
charge to help patrons
with hearing difficulties
enjoy our productions to their
fullest, no matter where they are
seated in the Theater. We are using
a system which transmits an FM
signal to a personal receiver outfitted
with lightweight headphones, or neck-
loop for hearing aids equipped with a
T-coil. Please inquire at the Box
Office for more information.



Special Thanks

Patrick Livingston
Maine State Music Theatre

Marden's
John Ervin - Colby College

A huge thank you to all of our wonderful
poster people and ushers
who are too numerous to name.



More than just Chocolate Chip Cookies . .

FAMILY RECIPES BAKED FRESH EVERY DAY
Providing authentic Italian baked goods
and tasty treats since 1960.

225 Bartlett St., Lewiston - 782-8312
TheItalianBakeryME.com

INDIVIDUAL DONORS

Contributions are the cornerstone of a not-for-profit theatre. Ticket sales generate less than 40% of our income. We thank the following individuals who have supported The Public Theatre with their generous financial contributions. **If you would like to join our Individual Donors, please call 782-2211.**

Star (\$1000+)

Althea Croxford & Phil Blake
David Eskelund
Anonymous
Elaine Makas
Susan & Philip Morgan
James & Candace Platz
Thomas H. Platz* &
Paula Marcus-Platz
Patricia Smith & Richard Tucker
Edward Walworth & the late Candace Walworth*
Ellen W. P. Wasserman*
Susan & Robert Weiss*

Producer (\$500-\$999)

Brenda Boothby
Marty Corey
Gretchen & Jerry Davis
Phyllis Deringis
Bill & Cynthia DeSoi
Ken & Melinda Emerson
Ben & Bonnie Lounsbury*
Jennie & Michael Malloy
Denise McCourt-Buikema
The McKenzie Artists & Animals
Alice & Mark Mogensen
Barbara & Lanny Oliver
William Phillips
Anonymous
Dan & Deb Snow

Director (\$250-\$499)

Paul & Nina Baril
Ronald & Donna Bissonnette
Jeffrey & Susan Brown
Ed & Louise Buschmann
Ned & Kitsie Claxton
Sally Clifford
Bruce & Elizabeth Grant
Matt & Tracy Hancock
Ralph & Melinda Harder*
Vivianne Holmes
James & Julie Jackson
Gary & Lynn Knight
John & Elizabeth Lewandowski
Heidi McCarthy & Adam Lee
Armand & Lucille Mercier
Darby Ray & Raymond Clothier
Deborah Savadge & Playwrights Gallery
Patricia & Stephen Sawyer
Robert & Ellie Simard
Pete Small
Dave & Kathleen Stuchiner

* Denotes Theatre Founder

Bette J. Swett-Thibeault
Cecile Thornton
Anne Weatherbee
Ann E. Weiss

Leading Actor (\$100-\$249)

Deana Albert
Bruce & Pamela Allen
Martin & Judy Andrucki
Gene & Ellen Benner
Carmen Bennett
Fred & Janet Bishop
David Blocher & Helen Warren
Anonymous
John & Doris Bonneau
Jazzmin Bonner
Brenda Boothby
Jonathan Bradshaw
M. Elaine Briggs
Carl & Joyce Bucciantini
Constance Cardamone
John Cariani
Jim Carville
Mary Lou Chipala
Paul & Jennifer Ciejka
Rae Clark-McGrath
Barbara Connell
Holly Cooney
Linda W. Copas
Tim & Marianne Cowan
Ellen Crawford & Mike Genovese
In Memory of Elizabeth Crowley
Alvin & Anne-Marie Da Costa
Marian Dalton
Dick & Carol Davis
Peggy DeBlois
Rick & Barbara Diamond
Dr. Arthur Dingley
Maggie Dumaïs
Josephine & Stephanie Dupal
Elaine & Dave Elliott
Bruce Edwards
Alice Faucher
Anonymous
Mr. & Mrs. RJ Gagnon
George A. Gilmore
Rhonda Gioia
Kathy Gleason
Bob Grieshaber
Michelle & Normand Groleau
Jeff & Diane Handler
Jody Harris
Allan & Libby Harville
Judith Head & Michael Jones
Julie Hendrickson
Connie & Bob Hitchcock

David & Cori Holt
Nick Poulton & Barbara Howard
Rich & Jackie Jordan
Tim & Sue Jordan
Michael & Janet Joseph
James Kearney & Carol Rice
Katharina Keoughan
Lee & Ingrid Kendall
Joseph Klapatch & Michael Jinbo
Robert & Nancy Kleckner
Paul Knight
Gail Carville & Peter Kowalski
Joan & Richard Legendre
Susie Luening
Stephen & Irene MacDougall
Virginia B. Marczak
Pam & Michael Matzinger
Andrew & Joanne McKee
Steve & Nancy Menneally
Armand & Lucille Mercier
Serg A. Miller
Carol & Richard Murrell
Jeff & Jo Ann Newell
Anonymous
Edward Barrett & Nancy Orr
Joel & Dave Oshansky
Debra & Craig Phillips
Carl Prouty
Martha Richardson
Carolyn Robertson
Craig & Carol Robinson
Quimby Robinson
Bruce Rood
Linda Roy
John & Susan Saunders
Mary Snell & Irwin Novak
Rick Speer & Judy Frost
Susan & Rob Spellman
Judy Staicer & Robert Schwartz
Jeff & Sue Sturgis
Janet & Woody Tarbuck
Stan & Cathy Tetenman
Anonymous
Elwood & Susan Trask
Adriann Tucker
Sue Tymoczko
Richard & Lois Wagner
Anne Weatherbee
Richard & Bridget Whiting
Jon & Sheryl Whitmore
Liz Wilson
Edwin & Louise Woods
Frank & Louise Wotton

Stage Manager (\$50-\$99)

Tina Agren

Allan Anderson
 Tony & Marcia Augello
 Linda Bishop
 Judith H. Blanchard
 Leah & Jean Boyd
 Diane & Eugene Brogan
 Cindy Brown
 Anthony Butterall
 Marilyn Cadman
 Deborah Chandler
 Julianna Cliffe
 Marilyn Closson
 Dorothy Cobb
 Bruce & Whitney Condit
 Kathleen & Ed Cormier
 Janet Cosseboom
 Lynn & Nancy DeVane
 Anonymous
 Dacrel Devou
 Cheri & Jack Donahue
 Rachel & Michael Doucette
 Carolyn Downing
 Grace Drown
 Anonymous
 Elaine & Richard Dubois
 Richard Estabrook & Ann Havener
 Anonymous
 Judith & Greg Fergin
 Cyndi & Paul Fortier
 Teresa Golan
 Judith Golin
 Donald & Laural Grant
 Gregory & Elizabeth Hanscom
 Maureen Hargreaves
 Lucille Hawley
 Claire Hebert & Mary Weisenberger
 Christine Holden
 Paige Holmes & James Pineau
 Janet Isbell
 Tonja Japp
 Cheryl King
 Mara & Chris King
 Ray & Sue Lagueux
 Deborah Lamb
 Richard & Lynn Lee
 Natalie Rose Liberace
 Robert & Margaret Liversidge
 Judith Lloyd & David Wallace
 Pat & Fred Lowther
 Theda Lyden
 Connie Machan
 Diane Maheux
 Renata Manomaitis
 Gerald & Claudette Martel
 Maria McDonald
 Roger & Lucy Mills
 Chip & Jane Morrison
 Earl & Joanne Morse
 Deborah Nies & Linda Aumann
 Charles Noonan
 Hartley Noyes
 Dennis & Janet O'Neil

Susan & Timothy Parsons
 Gil Peterson
 Jeffrey Pinnette
 Edouard Plourde
 Lorraine Poulin
 Monique Poulin
 Kenneth & Grace Reed
 Anonymous
 Suzanne R. Roy
 Regina Schaare-Denio & Dennis Denio
 Tyla & Arthur Schaefer
 John Scherbarth & Katie Luz
 Tom & Claudette Shea
 Susan Wygel & J. Gregory Shea
 Christine Sirois
 Elaine M. & Scott St. Pierre
 Ralph & Donna Thivierge
 Steve & Carol Thomas
 Lorraine Turcotte
 Lee & Stephanie Upton
 Lorna & Peter Wales
 Crystal Ward
 Paul & Bethany Whalon
 Marjorie Whipple
 Diane Whitmore
 Andy & Marlene Witham
 Kathy Wyatt

Supporting Actor (\$20-\$49)

Judy Abromson
 Linda Albert
 Pamela Amrein
 Paul Balze
 Sally Bannen
 James Baldwin
 Penny Bedard
 Bruce & Pam Bell
 Lauren Bozzi
 Faye Brown
 Sandra Carder
 Kevin & Catherine Carey
 Robert & Tookie Clifford
 Amy Constantine
 Johannah Degrandprie
 Peggy Dorf
 Diana Dowd & Craig Doremus
 Nancy Dube
 Doris Ducharme
 Glenda Erickson
 Jane Erickson
 Harriet & Behzad Fakhery
 Richard Fein
 Judy Foye
 Jeffrey Frankel
 William Fuller
 Katherine Garren
 Susan Hathaway Glines
 Gail Grigsby
 Pamela Gross & James Crary
 Gerald Hartz
 Linda Hill

William Hodgkins
 Kate Holthausen
 Mary Houlihan
 Nan Hughes & Norm Rich
 Wendy Jacobs
 Verdell Jones
 Jerryanne LaPerriere
 Caj MacDonald
 Joy & Bob Malicia
 Linda Manchester
 Elaine Manglass
 Elizabeth B. McCall
 Joanne McDermott
 Sheila McGarr
 Jackie McLaughlin
 Nancy Mercer
 Donald Miville
 Roland Morin & Laura Cote
 Gilbert & Patricia Morrison
 Debbie Nelson
 Kathleen O'Donnell
 William Peden
 Joan Pedersen
 Richard & Rose Pelletier
 Helene & Lewis Perry
 Mark & Susan Perry
 Dr. & Mrs. Paul Raczynski
 Michael Richard
 Lucille Rioux
 Sandra Morrell Rooney
 N. S. Roy
 Marie Sacks
 Gina & Mark Scanlon
 Barbara Shapiro
 Bonnie Shulman
 Richard Skarzynski
 Sue & Ken Spalding
 Rebecca Johanna Stephans
 Anita Stone
 Linda Stone
 Jackie & Dick Strong
 Holly & David Sysko
 Terry Prince-Tarsetti
 Thomas Tatro & Jane Stone Tatro
 Lisa Therrien
 Sara Townsend
 Charlene Tucker
 Cheryl Van Messel & Charles Bross
 Joseph Varuolo
 Melissa & Gary Veilleux
 Margaret Volock
 Richard Walker
 Patricia A. West
 Bette & John Woodbury

This list reflects donations of \$20 or more received through October 18, 2022

Educational Programming



DID YOU KNOW?

In the past 30 years, over 107,000 students have attended a performance at The Public Theatre for just \$5?

The Public Theatre's Education Programs provide children with the opportunity to experience live professional theatre, serve as an educational resource for Maine schools, enrich the lives of young people, and encourage our next generation's participation in the cultural life of their community.

This programming is made possible through the generous support of our Education Sponsors and you, our patrons.



Each Student Matinee features \$5 tickets and a post-show talkback with the actors and director. Student rates are also available for our public performances. To help Educators make the most of the experience, free study guides are available prior to attending and pre or post-show workshops about the production are available upon request. This experience cultivates the habit of participating in the cultural life of their community and gives them an experience that will expand their world in new and exciting ways.



As theatre professionals we have taken our skills and created FREE live and virtual workshops that can easily fit into most curricula. These workshops were originally created to help support teachers and the Arts in schools during the pandemic and presented virtually to classes as far away as Monhegan! They were so successful they are now a regular part of our programming! Serving Grades 3-12.

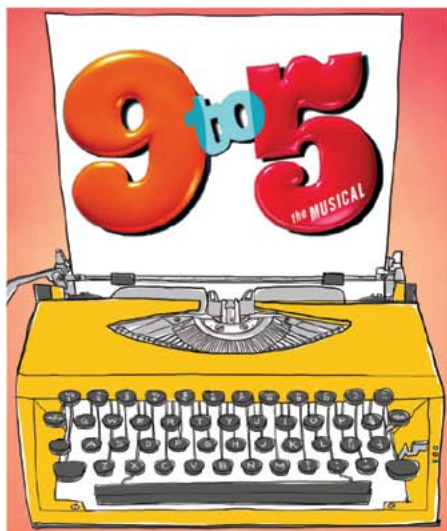
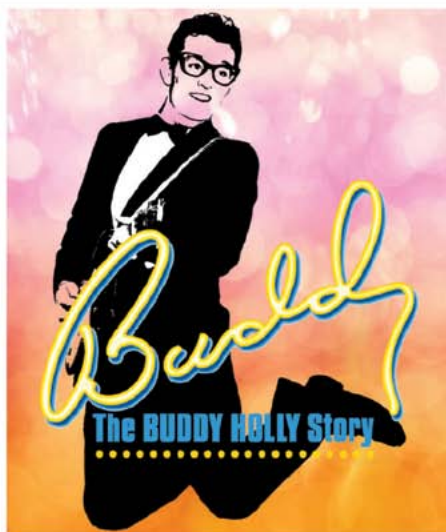
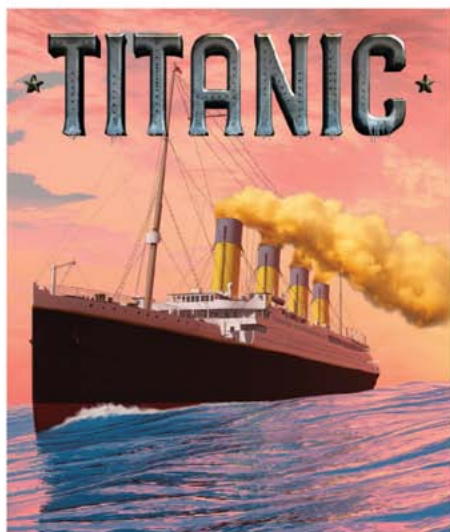


Classes choose a story from the public domain and illustrate it. We create a high quality video story we share with libraries, our patrons and the general public. The Art of Storytelling can be done with any grade at any level of artistry. You can see the finished videos at youtube.com/ThePublicTheatre

**Read more about our Education Programs:
ThePublicTheatre.org/student-matinees
or call 782-2211**

2023 SEASON

June 7 - August 26



MSMT
MAINE STATE MUSIC THEATRE  EST. 1959

 207-725-8769  MSMT.ORG

Pickard Theatre, Bowdoin College Campus,
1 Bath Road, Brunswick, Maine

Business Listings

Androscoggin Home Healthcare + Hospice.....207-777-7740

15 Strawberry Ave., Lewiston, ME 04240

www.androscoggin.com

Austin Associates, P.A.207-783-9111

Certified Public Accountants

Auburn • Norway • Skowhegan www.austinpa.com

Berman & Simmons, P.A.207-784-3576

Personal Injury Trial Attorneys

Portland • Lewiston • Bangor

bermansimmons.com

Optometric Associates.....207-784-3564

Home of Healthier Eyes

168 East Avenue, Lewiston, Maine 04240

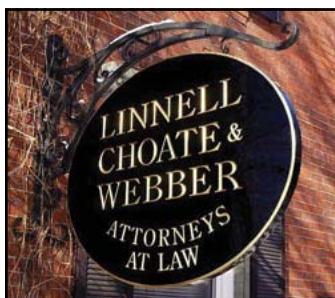
www.optometricassociates.com

Roy I Snow, Inc.207-782-3734

Electrical Contractor

11 Library Avenue, Auburn, Maine 04210

www.roysnow.com



Small Town Feel ~ Nationwide Reach

Family Law ♦ Estate Planning ♦ Bankruptcy

Civil Litigation ♦ Criminal Defense

Real Estate Law

Business Law ♦ Employment Law

Workers' Compensation ♦ Construction Law

83 Pleasant St. Auburn ♦ 207-784-4563

FULL SERVICE LAW FIRM SINCE 1931 ♦ lcwlaw.com



THE CHAMPOUX GROUP

CHAMPOUX • PEOPLES • PINKHAM • ROGERS
I N S U R A N C E

Personal • Business • Bonding...

...Your Security Is Our Main Concern!

www.MaineInsuranceOnline.com

Supporting the Arts

Specializing in Family Law & Litigation

ANDRUCKI & KING

ATTORNEYS AT LAW

207.777.4600 • ANDRUCKILAW.COM
179 LISBON STREET, LEWISTON, ME 04240



990 Center St. Auburn, ME
emersontoyota.com (207) 784-1348

*“Where You Buy Is As Important
As What You Buy”*

Optometric Associates

Home of
Healthier
Eyes

Douglas J. Henry, O.D., Ph.D
Diplomate, American Board of Optometry

Stephen L. Ebersole, O.D.
Diplomate, American Board of Optometry

Abigail R. Heroth, O.D.

- Comprehensive Eye Exams
- Over **1000** Fashion Frames In Stock with On-Site Lab for Fast Service
- Contact Lens Specialists
- **New** Dry Eye Center
- Eye Disease Treatment
- Laser Surgery Co-Management



**Prescription and
Non-Prescription
Sunglasses**



**Serving L/A for
more than 60 Years**

784-3564

168 East Ave., Lewiston

www.optometricassociates.com

E-mail: respond@optometricassociates.com



Medicare, Most Insurance
& CareCredit™ Accepted

**THE PUB
BAXTER
BREWING CO.**

**PRESENT YOUR TICKET
FROM PLAYBILL EVENT
FOR \$5 OFF YOUR BILL!***

*TICKET MUST BE FROM SAME-DAY
*NO CASH VALUE

**120 MILL STREET - LEWISTON, ME
WWW.THEPUBATBAXTER.COM**



DeBlois Electric, Inc.

ELECTRICAL CONTRACTOR • DESIGN BUILD

Building Lasting Relationships Since 1967

- Service • Small Projects • Generators • Smart Homes

www.debloiselectric.com

Lewiston, ME • 207-783-6512



Bank Where You Belong

**1000 Lisbon Street
Lewiston, ME 04240**

**836 Center Street
Auburn, ME 04210**

207-783-1475

www.centralmainecu.com

The Magic of Live Performance:

**Energy • Connection • Laughter • Sorrow
Mystery • Surprise • Wonder • Applause!**

Your support makes all this, and more, possible. THANK YOU!



**Visbaras Law
&
Excalibur Title
Company of Maine
— LLC —**

*Providing quality legal services since 1986 in real estate closings,
titles and title insurance, zoning and land use, business start-ups,
residential and commercial property sales, and individual wills and trusts.*

**K. Alexander Visbaras, Esq.
195 Center Street
Auburn, Maine 04210**

**207-376-3126
207-376-3127
kalex@visbaras.com**

PENMOR
LITHOGRAPHERS

MARKET YOUR BUSINESS
with **HIGH-IMPACT** PRINT



Commercial Offset Printing
Digital Small Run Printing
Wide Format Signage Printing
Mailing and Fulfillment Services

8 Lexington Street • P.O. Box 2003 • Lewiston, ME 04241-2003
Tel: 207.784.1341 • 1.800.339.1341 • Fax: 207.784.2892
www.penmor.com

Courtesy, Quality and Service . . .
A Winning Combination
Since 1939



Employee Owned

Ruburn • Lewiston • Augusta
Dixfield • Rumford • Lisbon Falls
Topsham • Brunswick • Freeport

Eat In, Carry Out, Event Catering

samsitalian.com

warp+weft

The arts bring
texture to
our lives and
community.



Brand with
texture.



warpweftbranding.com



Blais Flowers

GIFT SHOP & GREEN HOUSE

539 Webster Street
Lewiston, Maine 04240
Phone: (207) 783-8566
www.blaisflowers.com

*Your florist
for every occasion.*



PLATZ ASSOCIATES

Since 1980

Architects • Engineers

Construction Managers

*Supporting the Arts
in our community
for over 35 years.*

TWO GREAT FALLS PLAZA • AUBURN, MAINE • 04210 • 207 784 2941



YOUR FUTURE STARTS HERE

**Earn a high-quality
education with one of
the lowest tuition rates
in New England.**

Central Maine Community College offers over 40 degrees and professional development opportunities, all for the lowest tuition in New England. Choose from on-campus, hybrid, or 100% online courses designed to fit into your busy schedule.

We're here for you every step of the way.

FOR CUSTOMIZED TRAINING AND
PROFESSIONAL DEVELOPMENT
OPPORTUNITIES, VISIT
WWW.CMCC.EDU/WORKFORCE

www.cmcc.edu

(207) 755-5273
1250 Turner Street • Auburn

Notice of Non-discrimination: Central Maine Community College is an equal opportunity/affirmative action institution and employer. For more information, please contact Human Resources at 207-755-5396 or humanresources@cmcc.edu.



FISH BONES



JOIN US BEFORE
OR AFTER THE SHOW

FISH BONES GRILL

70 LINCOLN ST., LEWISTON, ME

(207) 333-3663 | www.fishbonesgrill.com

We are **proud** to support the arts in our community.

When you're always on the go, you need a bank that's always there for you. Our suite of personal and business products are designed to make banking easier, no matter what corner of the world you're in.

**WE HOPE YOU
ENJOY THE SHOW!**

MEMBER
FDIC



A Division of Maine Community Bank

**MECHANICS
SAVINGS**

AUBURN BRUNSWICK LEWISTON WINDHAM
207-786-5700 mechanicssavings.com

Alphabetical Business Directory

Androscoggin Bank	A-5
Androscoggin Home Healthcare + Hospice	A-7, C-3
Andrucki & King	C-4
Arts & Culture LA	C-12
Austin Associates	C-3
Axis Natural Foods.....	A-8
Bates Theatre & Dance	Inside Front Cover
Bates Arts Collaborative	Inside Back Cover
Berman & Simmons	A-2, C-3
Blais Flowers.....	C-8
Business Listings	C-3
Central Maine Community College	C-9
Central Maine Credit Union.....	C-6
Champoux Group, The	C-4
Computer Place, Inc, The	A-6
Cote Corporation, The	A-7
DaVinci's	A-5
DeBlois Electric	C-6
Dirigo	A-6
Dun Roamin' Tree Farm	A-9
Emerson Chevrolet Buick	A-10
Emerson Toyota	C-4
Fish Bones Grill	C-9
FX Marcotte	A-8
Franco Center, The.....	A-4
Hammond Lumber	A-11
Leary & DeTroy	A-6
Linnell, Choate & Webber	C-3
Lisa Laliberte State Farm Insurance.....	A-10
Maine Family Federal Credit Union	A-11
Maine Music Society	A-3
Maine State Music Theatre	C-2
Maple Way Dental Care	A-12
Mechanics Savings	C-9
Midcoast Symphony Orchestra	A-5
Norman, Hanson & DeTroy, LLC	A-8

continued

Alphabetical Business Directory

Optometric Associates	C-3, C-5
Orphan Annie's Antiques	A-11
Ouellette & Associates	A-9
Pat's Pizza	A-10
Penmor Lithographers	C-7
PERFORMANCE! AD SALES	C-11
Platz Associates	C-8
Rinck Advertising	A-9
Roopers	A-10
Roy I. Snow, Inc	A-2, C-3
Sam's Italian Foods, Inc	C-7
Schooner Estates	Back Cover
Studio 88	A-6
The Pub at Baxter Brewing	C-5
The Public Theatre	A-1
Visbaras Law LLC	C-6
warp + weft	C-7

**Proceeds from advertisements in
PERFORMANCE! provide important
support to the Arts in your community.**

**Contact us to advertise in this playbill
for 2023-24.**

Penny Drumm • 207.333.3386
penny.smartmanagement@gmail.com





17 Ways to HAVE FUN in L/A



- **Androscoggin Historical Society** androhistory.org
- **Auburn Public Library** auburnpubliclibrary.org
- **Bates Dance Festival** batesdancefestival.org
- **Bates College Museum of Art** bates.edu/museum
- **Community Little Theatre** lactl.com
- **Franco-American Collection at USM**
usm.maine.edu/franco-american-collection
- **Franco-Trail L/A**
- **Franco Center** francocenter.org
- **L/A Arts** laarts.org
- **Lewiston Public Library** lplonline.org
- **Maine Music Society** mainemusicsociety.org
- **Midcoast Symphony Orchestra**
midcoastsymphony.org
- **Museum in the Streets trail** museumla.org
- **Museum L-A** museumla.org
- **Olin Concert Series** bates.edu/olin-concert-series
- **The Public Theatre** thepublictheatre.org
- **The Public Art trail** laarts.org



MUSIC



LITERARY ARTS



THEATER



ART+VISUALCULTURE MUSEUM OF ART



DANCE


CELEBRATE THE ARTS AT BATES!

BATES | ARTS
COLLABORATIVE

<http://www.bates.edu/events/arts/>

For more information about the Bates Arts Collaborative, see Bates.edu/arts

[back to Directory Listing](#)

We just might be the
 **Right Fit**
for you too!



*Claudette
Martel*

*Gerry
Martel*



*Schooner Estates
Tenants Since 2020*



Schooner Estates
Senior Living Community

784-2900 • www.SchoonerEstates.com

Supporting the Arts in L/A for more than 25 years

[back to Directory Listing](#)