

the **PUBLIC**
THEATRE

PERFORMANCE! 2022-23

A Playbill for The Public Theatre and Maine Music Society

DANCE

THEATER



JOIN US FOR THE 2022 SEASON

HURRICANE DIANE

By Madeleine George
Directed by Kush Sharma '23
An Honors Thesis production in Directing

GANNETT THEATER

NOV 3 @ 7:30PM, NOV 4 @ 7:30PM
NOV 5 @ 5:00 PM, NOV 6 @ 2:00PM
NOV 7 @ 7:30PM

In this Obie-winning comedy with a twist, Pulitzer Prize finalist Madeleine George pens a hilarious evisceration of the blind eye we all turn to climate change and the bacchanalian catharsis that awaits us, even in our own backyards.

ANANYA DANCE COMPANY *DASTAK, I WISH YOU ME*

SCHAEFFER THEATRE

MON, NOV 7 @ 7:30PM
In partnership with the Bates Dance Festival, the Department of Theater and Dance is pleased to welcome Ananya Dance Theatre this fall for their performance of *Dastak: I Wish You Me*, a meditation on borders, loss, belonging, home, and liberation.

THE MARCY PLAVIN FALL DANCE CONCERT SCHAEFFER THEATRE

SAT, DEC 3 @ 5:00PM
SUN, DEC 4 @ 2:00PM
MON, DEC 5 @ 7:30PM

This concert will feature works from faculty and nationally known repertory artists, including Darrius Strong and Ananya Chatterjea.

MUCH ADO ABOUT NOTHING By William Shakespeare

Directed by Prof. Tim Dugan

SCHAEFFER THEATRE

THU, MARCH 16 @ 7:30PM
FRI, MARCH 17 @ 7:30PM
SAT, MARCH 18 @ 5:00PM
SUN, MARCH 19 @ 2:00PM
MON, MARCH 20 @ 7:30PM

Hilarity abounds in Messina where everyone can see that confirmed bachelor Benedick and headstrong Beatrice are meant for each other—except for Benedick and Beatrice themselves! Or at least they won't admit it. While their friends try to trick the bickering pair into admitting they're in love, their young sidekicks Hero and Claudio start a romance of their own. But will false accusations, broken promises, and even Dogberry (the goofy constable) prevent a happy ending? One of the greatest romantic comedies ever, Shakespeare offers us witty wordplay that dazzles and a raucous celebration that uplifts!

SPRING DANCE CONCERT

SCHAEFFER THEATRE

FRI, APRIL 7 @ 7:30PM
SAT, APRIL 8 @ 5:00PM
SUN, APRIL 9 @ 2:00PM
MON, APRIL 10 @ 7:30PM

An annual favorite, this concert features the work of senior dance majors and independent study projects.

Bates Theater+Dance

Ticket information can be found at: batestheateranddance@eventbrite.com

[back to Directory Listing](#)

the PUBLIC THEATRE

2022-23

Morning After Grace

Sep 16-25 by Carey Crim

A hilarious and heartfelt new comedy for Baby Boomers. Three strangers unexpectedly enter each other's lives in invaluable ways, truthfully tackling the topics of love, loss, sex, aging parents, and even medical marijuana munchies.

The Victorian Ladies' Detective Collective

Nov 4-13 by Patricia Milton

It's "Sherlock Holmes" meets "Arsenic & Old Lace" in this entertaining murder mystery with a modern female sensibility. Two strong-willed sisters in Victorian London team up with a cheeky American actress and set off to solve a crime.

Pilgrims Musa & Sheri in the New World

Mar 3-12 by Yussef El Guindi

A sweet-natured immigrant cab driver and a sassy American waitress negotiate the twists and turns of love and cultural differences in this smart, funny and thought-provoking romantic comedy.

Jeeves and Wooster in 'Perfect Nonsense'

Apr 21-30 by The Goodale Brothers

Inspired by P.G. Wodehouse's hilarious stories of Bertie and his trusted valet Jeeves, this delightfully silly comedy will tickle the funny bone in audiences of all ages.

POLKADOTS: THE COOL KIDS MUSICAL

May 19-21 by Tunstall, Lyons & Borowsky

When 8-year-old Lily moves to a new town, she faces the challenge of being the first Polkadot in an all Square school. This delightful musical with a message combines catchy songs and the humor of a Pixar film into entertaining family fun for ages 4 and up!



ThePublicTheatre.org

782-3200 31 Maple St, Lewiston

Come PLAY with us!



Roy I Snow, Inc.

ELECTRICAL CONTRACTORS

Commercial Residential Industrial

Serving Maine since 1947 RoySnow.com 207.782.3734

Proudly
supporting the
arts
in our
community.

**BERMAN &
SIMMONS**
TRIAL ATTORNEYS

PORTLAND

LEWISTON

BANGOR

800 244 3576

bermansimmons.com



THE Maine Music Society

2022
2023
Season

ARTISTIC DIRECTOR
Dr. Richard Nickerson

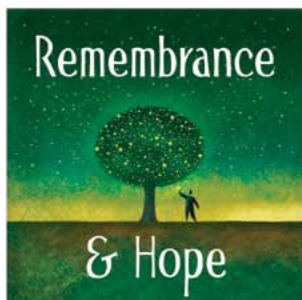
SEASON SPONSORS
Hardy Wolf & Downing
Ladd Foundation



Saturday, November 5
7:30 pm



Sat., Dec. 10 • 7:30 pm
Sun., Dec. 11 • 3:00 pm



Sat., March 11 • 7:30 pm
Sun., March 12 • 3:00 pm



Sat., May 13 • 7:30 pm
Sun., May 14 • 3:00 pm

FRANCO CENTER • LEWISTON

For tickets call 333-3386 or visit www.mainemusicsociety.org

Entertainment on the Riverfront

Franco Center Box Office 207-689-2000



The Male Intellect: An Oxymoron?

International comedy

Thursday, Oct. 6



Sights & Sounds of Christmas

Spectacular light show

Dec. 17 & 18



Echoes of Floyd

*Pink Floyd Tribute
Band*

Saturday, Oct. 8



Schooner Fare

*Long-time
favorite Band*

Friday, Feb. 3



Fright Night

*Walk through our
creepy crypt*

Oct. 25, 26, 27



Josee Vachon

*Popular French
performer*

Saturday, March 4



Magic of the Steelgraves

*Family-friendly magic
and illusion show*

Saturday, Nov. 12



Studio Two—A Beatles Tribute

*The Beatles Before
America*

Friday, March 31



Runnin' Down a Dream

Tom Petty Tribute Band

Saturday, Nov. 19



Silver Circus

*Family-friendly magic
show*

Saturday, April 8



Don Campbell Christmas

Festive holiday concert

Friday, Dec. 16



La Rencontre

Lunch & Entertainment

Sept. 8, Dec. 8, March 9,
June 22

46 Cedar Street
Lewiston, Maine
FMI: francocenter.org

On the Riverfront
**FRANCO
CENTER**

Performing Arts & Entertainment

MIDCOAST SYMPHONY ORCHESTRA

2022 – 2023 SEASON

Concerts are held at 7:00 p.m. at the Franco Center, Lewiston

Season Opener

October 29, 2022

Seven O'Clock Shout
Coleman
Piano Concerto No. 2
Shostakovich
Chiharu Naruse, Pianist
Symphony No. 4
Brahms

Favorite Music for All Ages

January 14, 2023

Hungarian March
from *The Damnation of Faust*
Berlioz
Tubby the Tuba
Kleinsinger
Featuring Douglas Ertman & Denise Shannon
Danzon No.2
Marquez
Yankee Doodle
Arr. Gould
Joel Preston, "Conduct the Orchestra" Winner
Piano Concerto in A Minor
Grieg
Mesa Schubeck, Pianist and Concerto Winner
Capriccio Espagnol
Rimsky-Korsakov

Tried and True, Plus a Newer Crew

March 18, 2023

Symphony No.35 in D major,
K. 385, "Haffner"
Mozart
Concerto in D Minor
for Two Violins
Bach
*Eva Gruesser & Roban Smith,
Violinists*
Propellers in the Sun
Porter
Symphony No.3
Price

French Impressions

May 20, 2023

Hiroya Miura, Guest Conductor
D'un matin de printemps
Boulanger
Les Indes Galantes, Suite No.1
Rameau/Arr. Dukas
La Valse
Ravel
Pictures at an Exhibition
Mussorgsk /Orch. Ravel

'70s Extravaganza Classical Night Fever

Saturday, June 10, 2023 • 7:00 p.m.

MSO teams up with *Motor Booty Affair*, Maine's own 70s disco/funk tribute band. This world-class performance transports you on a journey through some of the best hits of the 1970s.

For ticket information visit:
MidcoastSymphony.org
or call: 207-481-0790



**Sit back,
relax,
and enjoy
the show!**

At Androscoggin, we understand and appreciate the joy performers bring to the people in our communities and are proud to support the arts.

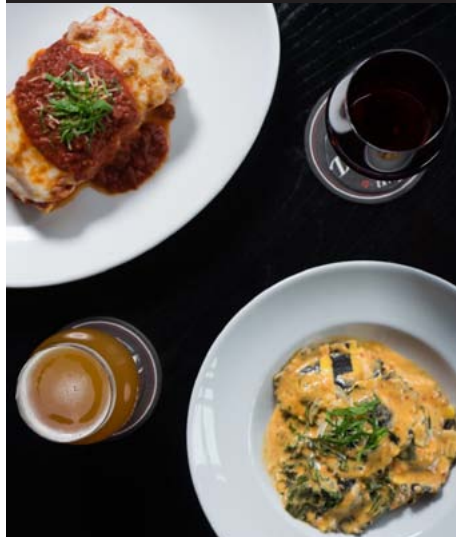
**Androscoggin
Bank**

Member FDIC

A Banking Force For Good



Dinner and a concert in perfect harmony.



150 MILL STREET, LEWISTON
WWW.DAVINCISEATERY.COM

DaVinci's
»• EATERY •«



Leary & DeTroy

ATTORNEYS AT LAW

- Workers Compensation
- Criminal Law
- Personal Injury
- Divorce & Custody
- Social Security Disability
- Disability Discrimination

Justin W. Leary
Benjamin E. DeTroy

90 Main Street • Auburn
782-3275
www.LearyandDeTroy.com
Free Initial Consultation



Learn your rights and obtain experienced, effective legal representation




• NETWORKS • SALES
• SECURITY • REPAIR



"Honest Job, Honest Price"

t. 207.783.7232
f. 207.783.7260
Weekdays 9AM – 5PM
www.tcpme.com
www.facebook.com/tcpme

1485 Lisbon Street
Lewiston Maine 04240
info@tcpme.com



DIRIGO
FEDERAL CREDIT UNION

WWW.DIRIGOFUCU.COM



STUDIO 88 MUSIC SCHOOL

SUZUKI TALENT EDUCATION • PIANO AND VIOLIN



Rachel Eastman Feeley
Martha Gail Feeley

Studio88music@aol.com
207-344-9145





ANDROSCOGGIN
Home Healthcare
+ Hospice

Proudly Supporting the Arts

Androscoggin.org

The Cote Corporation



- Crane & Rigging Services • Trucking • Millwright
- Machinery Moving • Warehousing
- Cranes up to 300 Ton Capacity
- Tip Height 361'

DEDICATED TO EXCELLENCE!

www.cotecrane.com • 800-696-6282
2980 Hotel Road, Auburn, ME 04210

Good Health to you
and the Planet too!

Serving Maine
Since 1970

AXIS NATURAL FOODS



120 Center Street Plaza
Auburn, Maine 04210
(207) 782-3348
axisnaturalfoods.com



Natural & Organic Foods • Vitamins • Herbal Products
Books • Body Care • Organic Produce

A Maine Pioneer in Organic Farming...

Earth Day Every Day!
Organic Wine and Beer • Home Brewing • Gluten Free Items
Organic Produce • Monthly Specials



132 Lincoln St.
Lewiston, Maine 04240
(207) 783-8593

130 Western Ave.
South Portland, Maine 04106
(207) 775-5381

www.fxmarcotte.com

A Commitment To Excellence



Norman Hanson & DeTroy is
a proud supporter of The Maine
Music Society, The Public Theatre
and the arts community in Maine.

nhdlaw.com

Attorneys at Law

**NORMAN
HANSON
DETROY**

Experienced. Efficient. Effective.

Portland (207) 774-7000

Lewiston (207) 777-5200

If

YOU LOOK CLOSELY

you'll see

the Arts
change
everything.



113 Lisbon Street
Lewiston, Maine 04240
(207) 755-9470
www.rinckadvertising.com

OUELLETTE & ASSOCIATES, P.A.

CERTIFIED PUBLIC ACCOUNTANTS

1111 Lisbon Street
Lewiston, Maine 04240
(207) 786-0328 • Fax (207) 783-9377
www.oacpas.net

- Accounting
- Auditing
- Tax Services
- Bookkeeping Services
- Consulting Services
- Business Valuation

Ed Buschmann's
DUN ROAMIN' TREE FARM, LLC



Fresh Christmas Trees
Choose 'n Cut
& Pre-Cut Available

75 Dyer Road
Lewiston, Maine
04240
207 - 577-5878



Maine Firewood
Dry Winter Hardwood
- Stoves and Fireplaces
Dry Summer Softwood
- Fire Pits and Camping

THERE WILL BE DRAMA

AND MUSIC AND DANCING
FOLLOWED BY COCKTAILS
AND CELEBRATION



Roopers
EST. '92

AUBURN

301 Main Street, Auburn | 783.9098
545 Minot Ave, Auburn | 783.2047

LEWISTON

794 Sabattus Street, Lewiston | 783.6353
686 Main Street, Lewiston | 344.1200
1420 Lisbon Street, Lewiston | 333.3095

OXFORD

980 Main Street, Oxford | 539.6072

EMERSON



CHEVROLET BUICK®

946 Center St. • Auburn

emersonchevy.com

(207) 784-3503 • (800) 696-0766

 **State Farm®**

Lisa Laliberte, Agent

224 Russell Street
Lewiston, ME 04240
Bus: 207-783-3332
lisa.laliberte.ggph@statefarm.com



~FOOD & SPIRITS~

Serving the L/A area since 1985!

Full-Service Family Restaurant

Dining Room and Take-Out Hours
11:00 AM - 9:00 PM Daily

Hot and Cold Sandwiches • Pizza
Pasta • Desserts • Lunch • Dinner
Full-service Bar • Maine Micro-Brews
Gift Certificates

85 Center Street • Auburn, Maine

Call us at 207-784-8221

patsauburn.com



Online Banking
 Mobile Banking
 Loans
 Checking
 Savings
 Credit Cards
 And more!



Maine Family
 Federal Credit Union

555 Sabattus Street | 831 Minot Avenue
 Lewiston, ME 04240 | Auburn, ME 04210
 (207) 783-2071

Serving our
 community since 1938



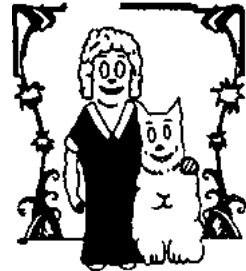
mainefamilyfcu.com

@Mainefamilyfcu



Orphan Annie's Antiques

New England's largest selection of Art Deco and Art Nouveau. Tiffany, Steuben, Gallé, and other prominent French and American art glass. Furniture, lighting, and vintage clothing. Large collection of estate and costume jewelry. Wide selection of dinnerware, including Fiesta and Depression glass. Featured in Down East, March '96. Open Mon.-Sat., 10-5; Sun. 12-5. Three floor warehouse sale every Monday 10:00 am - 1:00 pm at 110 Turner Street.



96 Court Street (across from the courthouse), Downtown Auburn • 207-782-0638
 orantiques@myfairpoint.net • OrphanAnniesMe.net



Hammond
 Lumber Company

22 LOCATIONS ACROSS MAINE & NEW HAMPSHIRE

AUBURN • BANGOR • BAR HARBOR • BELFAST • BELGRADE
 BLUE HILL • BOOTHBAY HARBOR • BRUNSWICK • BUCKSPORT
 CALAIS • CAMDEN • CHERRYFIELD • DAMARISCOTTA • ELLSWORTH
 FAIRFIELD • FARMINGTON • GREENVILLE • MACHIAS • PORTLAND
 ROCHESTER (NH) • ROCKLAND • SKOWHEGAN

WWW.HAMMONDLUMBER.COM

Kitchen,
 Bath & Flooring
 Center

A Division of Hammond Lumber Company

- ✓ FRIENDLY AND PROFESSIONAL SALES STAFF
- ✓ COMPLETE SHOWROOM WITH FUNCTIONING DISPLAY
- ✓ FREE 3D DESIGN SERVICES WITH PURCHASE OF MATERIALS

**Revitalize the
 Heart of your Home.**



YOUR SMILE. OUR PRIORITY.

Maple Way Dental Care is dedicated to the health and vitality of your smile. Drs. Rose, Reyes, Malang, Priest, and the rest of the team are committed to meeting your preventative, restorative and cosmetic dental needs.

We want you to look and feel your best!

From check-ups to more advanced procedures,
our priority is to keep you smiling.

Maple Way Dental Care will develop a treatment plan that fits
your unique needs. Give us a call to schedule an appointment!



Welcoming new patients. Emergencies seen the same day.
Most insurance plans are welcome.

**Rosemarie G. Sheline, DDS • Cherith Reyes, DMD
Jose R. Malang, DMD • Christopher Priest, DMD**

110 Canal Street, Lewiston

Maplewaydentalcare.com • 207-784-2211



The Public Theatre was founded to bring high quality professional theatre to the people of Maine, at an affordable price. We strive to make our presentations accessible to all, especially those less likely by tradition or inclination to attend live theatre. In choosing our season, we look for plays that speak from the heart; that are life-affirming and uplifting even when the subject matter is dark or painful; that use our language in powerful and provocative ways; that invite the audience to see their world in a new way. Artistic excellence is central to the mission of The Public Theatre.

The Public Theatre is a member of Theatre Communications Group (TCG), the national organization for the American theatre.

Board of Directors

Kari Grant-GragonPresident
Jennifer Malloy..... Vice President/Secretary
Thomas H. PlatzTreasurer

Deana Albert	Heidi McCarthy
Barbara Helen Baker	Colby Michaud
Peter Kowalski	Christopher Schario

Associate Members: Sue Brown, Linda Chiaravelotti, Marilyn Closson, Mary Ellen Costello, Kathy Gleason, Dina Jackson, Kathy Lawrence, Ben & Bonnie Lounsbury, Elaine Makas, Alice Mogensen, Chip Morrison, Carol Murrell Sheri Olstein, Jim Pittman, Polly Robinson, Cathy Snook, Susan Weiss

Staff

Christopher Schario Executive/Artistic Director
Janet Mitchko Co-Artistic Director
Carol Ham..... Business Manager
Jennifer Madigan Asst. Director Marketing/Development
Adam P. Blais Education/Development Director
Dmitri Kubbs..... Technical Director
Kathy Lawrence, Reen Robillard Box Office Staff
Ellie Dow..... House Manager
Liz Carlson Dramaturg/Literary Advisor
Ben Lounsbury..... Video Archivist

THE PUBLIC THEATRE takes pride in recognizing our season sponsors. We seek to develop a partnership with local businesses working together for the enrichment of the Lewiston-Auburn area. The following businesses have joined us in this partnership. If you would like to see your company listed here, please contact us regarding sponsorship opportunities.

SEASON UNDERWRITERS

[Austin Associates](#)
[Maine Magazine](#)
[Platz Associates](#)

[Sun Journal](#)
[WOXO 92.7 & WIGY 105.5/95.7](#)
[The Shubert Foundation](#)

CORPORATE SHOW SPONSORS

[Androscoggin Bank](#)
[Auburn Manufacturing](#)
[Bangor Savings Bank](#)
[Baxter Brewing, Co.](#)
[Berube's Complete Auto Care](#)
[Butler Bros.](#)
[Cross Insurance](#)
[Evergreen Subaru](#)

[LA Metro Magazine](#)
[Lee Auto Malls](#)
[Maine Community Bank](#)
[NAPA Coastal Auto Parts](#)
[Norway Savings Bank](#)
[Twin City Times](#)
[Visbaras Law / Excalibur Title, LLC](#)
[Warp + Weft](#)

EDUCATIONAL UNDERWRITERS

[Androscoggin Bank](#)
[Cross Insurance](#)
Helen & George Ladd Charitable Corp.

[Maine Arts Commission](#)
Margaret E. Burnham Charitable Trust
[Onion Foundation](#)

EDUCATION PARTNERS

[Carrabassett Coffee Company](#)
[Hilton Garden Inn - Auburn Riverwatch](#)
[Key Bank](#)

[Lewiston / Auburn Children's Foundation](#)
[Liberty Mutual Insurance](#)

SEASON SUPPORTERS

[Auburn-Lewiston YMCA](#)
[Evergreen Custom Printing](#)
[The Italian Bakery](#)
[Lisa Laliberte State Farm Insurance*](#)
[Maine Lobster Now](#)
[Marden's Discount](#)

[Ramada Hotel & Conference Center](#)
[Roy I. Snow, Inc.](#)
[Sherwin-Williams](#)
[YWCA of Central Maine](#)

**performance sponsors*

GRANT SUPPORT

[Actors' Equity Foundation](#)
[Davis Family Foundation](#)

[Maine Community Foundation](#)
[- Maine Theater Fund](#)



PILGRIMS MUSA & SHERI IN THE NEW WORLD

by Yussef El Guindi

Directed by
Christopher Schario

Stage Manager
Lisa R. Stafford*

Costume Design
Kathleen Payton Brown

Set Design
Michael Reidy

Lighting Design
Matthew Brian Cost

Original Music & Sound Design
Scott O'Brien

CAST

(in order of appearance)

Musa.....	Ahmad Maher*
Sheri.....	Laura King-Otazo*
Abdallah.....	Ian Eaton*
Tayyib.....	Ithamar Francois*
Gamila.....	Aline Salloum*

PLACE

A large American city.

TIME

Present

There will be a 15 Minute Intermission

"Pilgrims Musa and Sheri in the New World " is presented by special arrangement with Dramatists Play Service, inc., New York.

** Members of Actors' Equity Association, the union of professional actors and stage managers in the United States.*

Pilgrims Musa and Sheri in the New World is Sponsored by



*May the first
performance blow
you away.*

1-800-966-9172
androscogginbank.com

Androscoggin
Bank

Member
FDIC

Pilgrims Musa and Sheri in the New World is Sponsored by

BUTLER BROS. *Since 1952*



A Proud Sponsor of the Arts in
Lewiston & Auburn!

**CUTTING TOOLS ★ ABRASIVES ★ SAFETY PPE
PACKAGING PRODUCTS ★ JANITORIAL
MACHINERY ★ MRO SUPPLIES**

**A FULL LINE
INDUSTRIAL DISTRIBUTOR**



Serving Maine Industry since 1952, Butler Bros. is
your "go-to" supplier for manufacturing
consumables

Ticket No. : **207.784.6875**



Theatre : **sales@butlerbros.com**

**ADMIT
ONE**

WEBSITE LINK



SCAN CODE

Pilgrims Musa and Sheri in the New World is Sponsored by



**YOUR LOCAL
INSURANCE AGENCY**

**PROUD
SUPPORTER
OF THE PUBLIC
THEATRE**



AUTO



HOME



LIFE

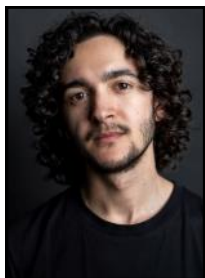


MOTORCYCLE



COMMERCIAL

150 Mill Street, Suite 4, Lewiston | 207.783.8591



AHMAD MAHER - (*Musa*) is an Egyptian born, NYC based actor who has performed in a variety of countries including Egypt, Sweden and the United States. Ahmad, a recent recipient of the Berkshire Theatre Critics Award for Outstanding Ensemble Performance *INVASION!*, and graduate of the American Academy of Dramatic Arts (*The Bacchae*, *Dog Sees God*) was selected to be part of the prestigious Academy Company (*Marie Antoinette*, *Youth*, *Adaptive Radiation*). Favorite theater credits include *Richard III* (SoHo Shakespeare Co.); *INVASION!* (Ancram Opera House); *Good Things Happen* (Lenfest Center for the Arts); & *Jesus, Son of Man* (Thanasis Theatre). Film/TV credits include *The Marvelous Mrs. Maisel*, *You Gotta Dance For It*, *Estranged*, *Boom!*. He is currently seeking representation. Ahmad is passionate about voicing Arab stories and is thrilled to be part of this wonderful piece with such talented actors. He is grateful to Yussef El Guindi for creating this world, to The Public Theatre for making it a reality, and to his friends and family for their constant support. This is to www.ahmad-maher.com | Instagram: itsahmadmaher



LAURA KING-OTAZO - (*Sheri*) Laura is delighted to be here playing Sheri and so grateful to the cast, crew and staff for this experience. Favorite theater credits include: *Gidion's Knot* (Heather), *Crimes of the Heart* (Lenny), *The Taming of the Shrew* (Kate), *Rope* (Leila), *Fire* (Maevae), *Insignificant* (Williamena Fleming), *A Midsummer Night's Dream* (Helena). TV and film: "Bull," "We're All Fine," "8:46." You can also listen to Laura as Cora Ducarmont in the dystopian audio drama podcast "Remainder."



IAN EATON - (*Abdallah*) credits his enrichment in theater beginning at Harlem School of the Arts, studying voice, violin, and acting as a youngster. His studies continued at LaGuardia High School (Fame High), and a BFA at The City College of New York soon followed. Television credits include *Law and Order*, and HBO's *Oz*. Theatrical roles include Charlie Parker in *Flight* at the Metropolitan Theatre, *Othello* at The Clarion Theater, and most recently as Sam in Arizona Theater Company's production of *Master Harold and the Boys*. Ian has spent several summers performing most of Shakespeare's comedies for audiences free of charge with Connecticut Free Shakespeare (CFS) throughout Connecticut. He is also a recently minted playwright, whose play "Superhero" got a full production last spring in NY with Houses on the Moon Theater Company, and was met with acclaim and

several Audelco Award nominations. Ian is a proud member of Only Make Believe, a non-profit organization that creates and performs interactive theater for sick children in hospitals and care facilities



ITHAMAR FRANCOIS - (*Tayyib*) is thrilled to make his professional debut after a few years away from the stage. Many thanks to the wonderful cast and crew of The Public Theatre! He was last seen playing the role of Don Pedro in Shakespeare's *Much Ado About Nothing* (Alabama Shakespeare Festival). While there, he also understudied Orsino in *Twelfth Night* and the Ghost(s) of Christmas Present & Future in *A Christmas Carol*. He has also played Gremio in *Taming of the Shrew* (Shakespeare Theatre of NJ), acted in numerous independent films, and has opened for numerous major music artists while in

two bands. Thank you to my supportive friends/family and to my loving partner/cheerleader, Annie. #ILYTTMAB. Instagram: @Ithamar.Francois



ALINE SALLOUM - (*Gamila*) is an NYC-based actress and writer who has performed in a range of countries, including Lebanon, Switzerland, and the United States. She is a graduate of the American Academy of Dramatic Arts NY and was a member of the 2018/2019 Academy Company. Her NYC credits include *The Meltdown*, which she co-created and performed at Rattlestick Theater's Global Forms Festival, *Only Remains Remain*, by Freya Powell performed at MoMA PS1, *The Misanthrope* with Molière in the Park, and *Gratitude* by Oren Safdie at Urban Stages. www.alinesalloom.com

YUSSEF EL GUINDI - (*Playwright*) is a resident of Seattle. His play *Back of The Throat* was the winner of the 2004 Northwest Playwright's Competition. It was also nominated for the 2006 American Theater Critics Association's Steinberg/New Play Award, and was voted Best New Play of 2005 by the "Seattle Times." It was first staged by San Francisco's Thick Description and Golden Thread Productions; then later presented by Theater Schmeater in Seattle; Manbites Dog Theater in Durham, North Carolina; the Cyrano Theater Company in Anchorage, Alaska; the Flea Theater in New York; the Furious Theatre Company in Pasadena; and Silk Road Theatre Project in Chicago. Silk Road Theatre Project produced another play of his in 2005, *Ten Acrobats in an Amazing Leap of Faith*. His two related one-acts, *Acts of Desire*, were staged by the Fountain Theatre in Los Angeles. His adaptation of Chekhov's *A Marriage Proposal* into an Arab-American setting was staged by the Arab Theatrical Arts Guild in Dearborn, Michigan, and was nominated for several PAGE awards, including Outstanding Achievement in Original Play or Adaptation. Yussef holds an MFA from Carnegie-Mellon University and was playwright-in-residence at Duke University.



CHRISTOPHER SCHARIO - (*Executive/Artistic Director*) has been Artistic Director of The Public Theatre since 1993. His adaptation of *A Christmas Carol*, published by Dramatists Play Service in 1996, was developed for The Public Theatre and has enjoyed successful productions at professional and amateur theatres throughout the world. In New York he directed for Roundabout Theatre, Westbeth Theatre, Spectrum Stage, American Academy of Dramatic Arts, Drama Project and Madison Avenue Theatre. Regional theatre directing includes Alabama Shakespeare Festival, Boulder Ensemble Theatre, Kentucky Repertory Theatre, Toledo Repertory Theatre and Millbrook Playhouse. He has acted Off-Broadway, on national tours, regional theater, summer stock, dinner theater, films, soaps and commercials. He has taught at Carnegie-Mellon University, University of Colorado, University of Tennessee, American Academy of Dramatic Arts, as well as privately in New York. He received a BFA in Acting from Ohio University and an MFA in Directing from Carnegie-Mellon University.



JANET MITCHKO - (*Co-Artistic Director*) As Co-Artistic Director of The Public Theatre, Janet has spent the past 30 years making theatre in Maine as both a director (*Morning After Grace, Dancing Lessons, Middletown, Sexy Laundry, Hound of the Baskervilles, Around The World in 80 Days*, etc) and actress (*Be Here Now, A Doll's House, PART 2; The Ladies Foursome; Good People; Time Stands Still*; etc), and is proud to call The Public Theatre her artistic home. Prior to life in Maine, Janet lived in NYC earning her living as a professional actress, voice-over talent, and director as well as teaching acting at The American Academy of Dramatic Arts. She is a graduate of the acting program at Carnegie-Mellon University, and the oh-so-proud mother of Emily.

LISA R. STAFFORD - (*Stage Manager*) is thrilled to be at The Public Theatre and in Maine for the first time! Her NYC work includes *The Chekhov Dreams, Offal Endings* (Theatre Row), *The Astonishing Times of Timothy Cratchit, Through the Darkness, Composure, Mesquite, NV* (Workshop Theater), *Lost Not Found, Detained* (UP Theater), *A Peregrine Falls* (Loading Dock Theatre), *The Worth of Water, American Fables* (HERE Arts Center). Regionally, Lisa's works include *Almost Heaven* (Riverside Theatre); *Rock of Ages* (Engeman Theater); *Berta, Berta* (Mile Square Theatre); *The Spitfire Grill* (Vanguard Theatre), *Matilda the Musical; Vanya, Sonia, Masha and Spike; I Love You, You're Perfect Now Change* (Gretna Theatre). Lisa also serves as the Production Coordinator for the Broadway Stage Management Symposium. Lisa received her BA in Theatre from Catawba College, where she is a member of the Blue Masque Theatre Hall of Fame, and her Masters in Theatre Education from UNC-Greensboro. Member, Actors' Equity Association. Love to Kevin, Mom and Dad!!

DMITRI KUBBS - (*Technical Director*) is excited to be building scenery again.. He first came to New England in 2000, working at numerous regional theaters. His work has been seen on Broadway and the golf channel. During a long hiatus from theater he's done custom fabrication, taught environmental education, managed petting zoos, and most recently been raising his son Rowan who also likes to help out at The Public Theatre. He resides in Auburn with his family, animals and a treasured collection of aging iron equipment.

MICHAEL REIDY - (*Set Designer*) Previous design work for The Public Theatre includes scenery for *Fiction, Rough Crossing, Marvin's Room, All in the Timing, Betrayal, The Old Settler, Enchanted April, The 13th of Paris and Magnetic North*, along with lighting for *Middletown, Deathtrap, and The Nerd*. Other theaters Michael has designed for include: Tennessee Repertory Theater, Portland Stage, Worcester Foothills Theater, Ram Island Dance, Santa Rosa Repertory, Bigfork Summer Playhouse, PORT Opera, Maine State Music Theatre, Theater at Monmouth. For Mad Horse Theater, Michael designed acclaimed productions of *One Flew Over the Cuckoo's Nest, King Lear, and Hamlet*. Michael's corporate and not-for-profit clients include: Time-Warner, Cole-Haan, Children's Museum of Maine, LL Bean and the Salem Witch Museum. Working with Transformit, Gorham, Maine, Michael designed tension fabric structures as touring sets for The Dave Matthews Band and ZZ Top. Michael has consulted on and fabricated several projects for performance artist William Pope.L, including *Blackula, Chocolate Fountain, A Personal History On Videotape*. Other projects include lighting design for *Mill Town*, an immersive dance experience set in the Bates Mill, choreographed by Stephan Koplowitz and produced by the Bates Dance Festival summer 2017; and Creative Director for *re:past a memorial for Malaga*, curated by Myron Beasley, summer 2018. Michael acknowledges the wonderful work of Filipino artist Pacita Abad as inspiration for the design.

KATHLEEN PAYTON BROWN - (*Costume Designer*) has designed many productions at The Public Theatre over the past 20 years. Previous designs include *Grease, Last Gas, Enchanted April, and Beau Jest*. Kathleen is also a regular designer at Portland Stage. Other credits: Maine State Music Theater, Theater at Monmouth, University of Maine, Bates College Theater, Colby College Theater, Lyric Stage Co., N.J Shakespeare Co., Huntington Theatre Co. Kathleen has been a professional designer for 36 years. She lives in Camden, where she manages her own custom clothing business, and is also the Events Coordinator for The Waldo Theatre in Waldoboro. She is more grateful than ever for the support of her family and colleagues, as without them this creative work would not be possible.

MATTHEW BRIAN COST - (*Lighting Designer*) has been designing lights for theater, dance, music and more for the last twenty years, from his alma mater Colby College to greater New England and beyond. This show marks a return to The Public Theatre after designing *Screwball Comedy* last year. Other

select recent credits include 5 by Project 31 Dance at the Boston University Dance Theatre, *Swing!* by Boston Conservatory at Berklee, and *Jonathan/The Good Deli* by Moonbox Productions. Matt lives in East Weymouth, MA with his wife Abby, son Simon and pitbull Roadie.

ERIN FAUBLE - (*Master Electrician*) heralds from the little town of Anderson, SC. After graduating with a BA in Musical Theatre from Converse College, Erin went on to do electrician work at Flat Rock Playhouse in NC. Eventually she moved to Maine in order to Master Electrician and design at Theater at Monmouth (*An Iliad, Pandora's Suitcase, A Midsummer Night's Dream*) and for The Public Theatre (*Be Here Now* and *The Victorian Ladies Detective Collective*). These days she aspires to be both a professional Lighting Designer and to be a successful mother to her fur-baby—a small, bossy gray cat with enormous green eyes.

SCOTT O'BRIEN - (*Composer/Sound Designer*) has composed, designed and engineered theatre and dance for a variety of Off-Broadway and regional theaters across the US. He was the Resident Composer/Sound Designer for American Globe Theatre from 2000-2014, the Chautauqua Theater Company from 2006-2009, the Stella Adler Studio of Acting from 2011-2012, and the Adirondack Theatre Festival from 2013-2015. He has lectured on Sound Design at SUNY-Rockland, Pace University, Fairleigh Dickinson University, The Duke Ellington School for the Arts and Montclair State University (where he was the head of the Sound Design Program from 2015-2019). He was the Resident Composer/Sound Designer for the Great River Shakespeare Festival in Winona, MN for their 2019 and 2021 seasons and his latest projects include a podcast version of the GRSF production of *MacBeth*, and *Black Santa For You*, a YouTube-based holiday web series for children. Film credits include: *Eleanor*; *Godmother of American Fashion* (for VANITY FAIR FILMS) and *Phoenix Rising*; *The Silent Victims Speak*, an award-winning documentary for NobleVision Productions. His most recent project was Lynn Nottage's *Clyde's* for director Melissa Maxwell at the George St. Playhouse (New Brunswick, NJ). His production company and studio Duck & Trout Music are based in Gardiner, ME. This marks his first season collaborating with The Public Theatre.

AUGUST THORNTON - (*Company Manager*) is a resident of Jay, Maine and a recent graduate from the University of Southern Maine where he was a major in theatre with a focus in performance. At USM he got to play characters such as Colonel Mustard in *Clue*, Ellard in *The Foreigner*, Tereus in *Love of the Nightingale* and Mr. Loyal in *Tartuffe*. Outside of USM he has been blessed to have taken on roles at other theaters such as, Billy Ray Jr. in, *On Golden Pond* at the Mystic Theatre, Jake Donahue in *Papermaker* at OHMPAA Theatre, and most recently as Pumblechook, Drummle, and Wemmick in *Great Expectations* at Lakewood Theatre. Although August may not be performing this year, he is extremely grateful that The Public Theatre is

providing him with this amazing opportunity where he can broaden his horizon in the world of the performing arts.

JACOB PRIBILSKY - (*Board Operator*) is a musician and sound production enthusiast from Walla Walla, Washington. He is currently a senior at Bates College, studying history and music with a focus on country music and culture. Jacob has worked for the college theater department since his first year at Bates as a light designer, board operator, crew member, and set builder. After graduating, he plans on moving to Asheville, NC in pursuit of a degree in music technology.



ACTORS' EQUITY ASSOCIATION was founded in 1913 to protect Actors from the severe mistreatment that permeated the industry at that time. Since its inception Equity has had only nineteen Presidents. Its current President is Kate Shindle. The Association consists of over 51,000 distinguished stars and other professional Actors and Stage Managers who work nationwide, from New York's Broadway to Los Angeles, from Minneapolis to Miami Beach, in regional, stock and dinner theatre, and in theatres for young audiences which build the audiences of tomorrow. These Actors and Stage Managers are committed to working in the theatre as a profession, not an avocation, and bring to you the finest professional training and experience. By presenting Equity productions, this theatre offers to you, our audience, the best entertainment presented by the finest quality Actors and Stage Managers that your admission dollars can buy.

The Public Theatre's Assisted Listening System was funded in part by **Dr. & Mrs. Ben Lounsbury** and a grant from the **Maine Arts Commission**, an independent state agency supported by the National Endowment for the Arts.



We are pleased to offer hearing assistance free of charge to help patrons with hearing difficulties enjoy our productions to their fullest, no matter where they are seated in the Theater. We are using a system which transmits an FM signal to a personal receiver outfitted with lightweight headphones, or neck-loop for hearing aids equipped with a T-coil. Please inquire at the Box Office for more information.



2022-23 Season Underwriters



AUSTIN ASSOCIATES
CERTIFIED PUBLIC ACCOUNTANTS

Two Great Falls Plaza
Auburn, ME 04210
1-800-605-9263
austinpa.com

maine.
THE MAGAZINE

themainemag.com

Subscribe.

\$60/year for both



MHD

MAINE HOME + DESIGN

mainehomedesign.com

PLATZ ASSOCIATES

Since 1980



Architects • Engineers

Construction Managers

Two Great Falls Plaza
Auburn, ME 04210

207-784-2941
platzassociates.com

Sun Journal

Connecting you with your community

sunjournal.com



Special Thanks

A huge thank you to all of our wonderful poster people and ushers who are too numerous to name. We couldn't do what we do without YOU!

A HUGE THANK YOU to the Sponsors of our Family Fundraisers!

Theatrical Thespians:

Baxter Brewing, Co. Lost Valley
Home at Last by Michelle Maine Source Homes + Realty

Drama Divas:

Ramada Hotel & warp + weft
Conference Center

Play Pal:

Roopers

A huge special thank you to the Valentine Ball Committee for all of their hard work!

Special Thanks to:

BJ's Wholesale Club Music Reflections
Hannaforf Whitaker Imagery



Play in the Snow!



Special Thanks to:

Black Mountain
Boston Bruins
Dunkin'
Flagship Cinemas
Maine Mariners
Play it Again Sports

A very Special Thank You to the Play in the Snow Event Committee for all of their hard work!

INDIVIDUAL DONORS

Contributions are the cornerstone of a not-for-profit theatre. Ticket sales generate less than 40% of our income. We thank the following individuals who have supported The Public Theatre with their generous financial contributions. **If you would like to join our Individual Donors, please call 782-2211.**

Star (\$1000+)

Anonymous
Althea Croxford & Phil Blake
Bill & Cynthia DeSoi
David Eskelund
Anonymous
Michael McKenzie & Kari Floren
Susan & Phillip Morgan
Barbara & Lanny Oliver
Sheri Olstein
James & Candace Platz
Thomas H. Platz* &
Paula Marcus-Platz
Margo & Jack Simmons
Patricia Smith & Richard Tucker
Edward Walworth*
Ellen W. P. Wasserman*
Susan & Robert Weiss*

Producer (\$500-\$999)

Jeffrey Brown, Susan Brown
Ed & Louise Buschmann
Marty Corey
Gretchen & Jerry Davis
Phyllis Deringis
Ken & Melinda Emerson
Jim & Julie Jackson
Gary & Lynn Knight
Brian & Jenna Langlais
Ben & Bonnie Lounsbury*
Elaine Makas
Denise McCourt-Buikema
William Phillips
Anonymous
Dan & Deb Snow
Androscoggin County Medical
Association

Director (\$250-\$499)

Glenn Anderson
Paul & Nina Baril
Ronald & Donna Bissonnette
Deborah Chandler
Ned & Kitsie Claxton
Robert & Kari Gagnon
Melinda & Ralph Harder*
Julie Hendrickson
Heidi McCarthy & Adam Lee
Darby Ray & Raymond Clothier
Anonymous
Deborah Savadge & Playwrights
Gallery
Pete Small
Dave & Kathleen Stuchiner
Cecile Thornton

* Denotes Theatre Founder

Ann E. Weiss
Frank & Louise Wotton
David & Margaret Zellinger

Leading Actor (\$100-\$249)

Deana Albert
Bruce & Pamela Allen
Maureen & Michael Aube
Gene & Ellen Benner
Carmen Bennett
Fred & Janet Bishop
David Blocher & Helen Warren
Anonymous
John & Doris Bonneau
Jazzmin Bonner
Brenda Boothby
Jon Bradshaw
M. Elaine Briggs
Carl & Joyce Bucciantini
Anthony Butterall
Constance Cardamone
Jim Carville
Mary Lou Chipala
Paul & Jennifer Ciejka
Rae Clark-McGrath
Barbara Connell
Holly Cooney
Tim & Marianne Cowan
Ellen Crawford & Mike Genovese
Alvin & Anne-Marie Da Costa
Marian Dalton
Carol S. Davis
Peggy DeBlois
Martha Deschaines
Rick & Barbara Diamond
Dr. Arthur Dingley
Josephine & Stephanie Dupal
Elaine & Dave Elliott
Bruce Edwards
Alice Faucher
Linda & Dick Giard
George A. Gilmore
Rhonda Gioia
Kathy Gleason
Bruce & Elizabeth Grant
Bob Grieshaber
Michelle & Normand Groleau
Jeff & Diane Handler
Allan & Libby Harville
Judith Head & Michael Jones
David & Cori Holt
Nick Poulton & Barbara Howard
Penelope Jessop & David Chittim
Michael Jones & Judy Head
Rich & Jackie Jordan
Michael & Janet Joseph
Lee & Ingrid Kendall

Katharina Keoughan
Barbara Keppel
Joseph Klapatch & Michael Jinbo
Robert & Nancy Kleckner
Paul Knight
Ray & Sue Lagueux
Joan & Richard Legendre
Susie Luening
Connie Machan
Patricia Mador
Virginia B. Marczak
Andrew & Joanne McKee
Steve & Nancy Menneally
Armand & Lucille Mercier
Joanne & Earl Morse
Christina Moylan & Thomas
Knowlton
Carol & Richard Murrell
Jeff & Jo Ann Newell
Anonymous
Dennis & Janet O'Neil
Edward Barrett & Nancy Orr
Joel & Dave Oshansky
Carl Prouty
Luanne & Rex Rhoades
Martha Richardson
Carolyn Robertson
Craig & Carol Robinson
Mitzl and Q
Bruce Rood
Linda Roy
John & Susan Saunders
Patricia & Stephen Sawyer
Judy Staicer & Robert Schwartz
J. Gregory Shea & Susan Wygel
Mary Snell & Irwin Novak
Susan & Rob Spellman
Sharon & David Staszak
Jeff & Sue Sturgis
Bette J. Swett-Thibeault
Janet & Woody Tarback
Stan & Cathy Tetenman
Woody & Susan Trask
Adriann M. Tucker
Sue Tymoczko
Lois & Richard Wagner
Anne Weatherbee
Jon & Sheryl Whitmore
Liz Wilson

Stage Manager (\$50-\$99)

Tina Agren & Dwight Wilcoxson
Allan Anderson
Tony & Marcia Augello
Colleen Bennett
Linda Bishop
Judith H. Blanchard

Diane & Eugene Brogan
 Cindy Brown
 Marilyn & Gary Cadman
 Carmen Caron
 Juliana & Rick Cliffe
 Steve & Marilyn Closson
 Bruce & Whitney Condit
 Janet Cosseboom
 Denise Courtemanche
 Lynn & Harvey DeVane
 Dacrel Devou
 Grace Drown
 Elaine & Richard Dubois
 Mike & Maggie Dumais
 Jane & David Erickson
 Anonymous
 Judith & Greg Fergin
 Cyndi & Paul Fortier
 Barbara Fowle
 Anonymous
 William Fuller
 Rachel & Steve Goulet
 Donald & Laural Grant
 Gregory & Elizabeth Hanscom
 Maureen & Richard Hargreaves
 Lucille Hawley
 Claire Hebert & Mary Weisenberger
 Connie Hitchcock
 Janet Isbell
 Tonja Japp
 James Kearney & Carol Rice
 Cheryl King
 Joel Leffert
 Natalie Rose Liberace
 Robert & Margaret Liversidge
 Judy Lloyd & David Wallace
 Theda Lyden
 Diane Maheux
 Renata Manomaitis
 Gerald & Claudette Martel
 Pamela & Michael Matzinger
 Maria McDonald
 Sheila McGarr
 Linda D. McPhee
 Deborah Nies & Linda Aumann
 Charles & Marguerite Noonan
 Susan & Timothy Parsons
 Helene & Lewis Perry
 Gil Peterson
 Debra Phillips
 Jeffrey Pinnette
 Edouard Plourde
 Carl Prouty

Merrill Rollins
 Suzanne R. Roy
 Tyla & Arthur Schaefer
 John Scherbarth & Katie Luz
 Karen Shumac & Larry Whittington
 Maggie Smith
 Elaine M. & Scott St. Pierre
 Wendy & Mark Tardif
 Ralph & Donna Thivierge
 Steve & Carol Thomas
 Anonymous
 Lee & Stephanie Upton
 Crystal Ward
 Paul & Bethany Whalon
 Diane Whitmore
 Andy & Marlene Witham
 Kathy Wyatt

Supporting Actor (\$20-\$49)

Judy Abromson
 Pamela Amrein
 Sally Bannen
 James Baldwin
 Paul Baribault
 Penny Bedard
 Bruce & Pam Bell
 Lauren Bozzi
 Frank Broadbent
 Ann Moreau Burg
 Kathi Burke
 Sandra Carder
 Kevin & Catherine Carey
 Robert & Tookie Clifford
 Johannah Degrandprie
 Abigail Douglas
 Nancy Dube
 Glenda Erickson
 Ruth H. Fiske
 Denis & Pauline Fortier
 Judy Foye
 Katherine Garren
 Susan Hathaway Glines
 Pamela Gross & James Cray
 Jody Harris
 Gerald Hartz
 Mr. & Mrs. Rollie Heckethorn
 Linda Hill
 William Hodgkins
 Kate Holthausen
 Nan Hughes & Norm Rich
 Digger & Nancy Jones
 Verdell Jones

Susan Kane
 Rodney C. Kuhl
 Larry & Carol LaBossiere
 Mary & Dick LaFontaine
 Deborah Lamb
 Tina Lambert
 Jerryanne LaPerriere
 Caj MacDonald
 Joy & Bob Malicia
 Jennifer & Michael Malloy
 Elaine Manglass
 Susan Martin
 Elizabeth B. McCall
 Joanne McDermott
 Jackie McLaughlin
 Donald Miville
 Roland Morin & Laura Cote
 Sandra Morrell Rooney
 Debbie Nelson
 David Newer
 Kathleen O'Donnell
 William Peden
 Joan Pedersen
 Richard & Rose Pelletier
 Cecile Potvin
 Dr. & Mrs. Paul Raczynski
 Marie Sacks
 Regina Schaare-Denio
 Barbara Shapiro
 Bonnie Shulman
 Sue & Ken Spalding
 Cynthia Stengel
 Rebecca Johanna Stephans
 Anita Stone
 Anonymous
 Eise Straus-Bowers
 Jackie & Dick Strong
 Holly & David Sysko
 Terry Prince-Tarsetti
 Thomas Tatro & Jane Stone Tatro
 Lisa Therrien
 Nancy Tremblay
 Charlene Tucker
 Cheryl Van Messel & Charles Bross
 Joseph Varuolo
 Melissa & Gary Veilleux
 Margaret Volock
 Richard & Paula Walker
 Patricia A. West
 Pearl Williamson
 Bette & John Woodbury
 Cindy Wu

This list reflects donations of \$20 or more received through February 14, 2023

Enjoy a hot cup of coffee today!

[Donate Online](#)

CARRABASSETT
COFFEE COMPANY

Call Toll Free: 1-888-292-BEAN
carrabassetcoffee.com

Educational Programming



DID YOU KNOW?

In the past 30 years, over 107,000 students have attended a performance at The Public Theatre for just \$5?

The Public Theatre's Education Programs provide children with the opportunity to experience live professional theatre, serve as an educational resource for Maine schools, enrich the lives of young people, and encourage our next generation's participation in the cultural life of their community.

This programming is made possible through the generous support of our Education Sponsors and you, our patrons.



Each Student Matinee features \$5 tickets and a post-show talkback with the actors and director. Student rates are also available for our public performances. To help Educators make the most of the experience, free study guides are available prior to attending and pre or post-show workshops about the production are available upon request. This experience cultivates the habit of participating in the cultural life of their community and gives them an experience that will expand their world in new and exciting ways.



As theatre professionals we have taken our skills and created FREE live and virtual workshops that can easily fit into most curricula. These workshops were originally created to help support teachers and the Arts in schools during the pandemic and presented virtually to classes as far away as Monhegan! They were so successful they are now a regular part of our programming! Serving Grades 3-12.

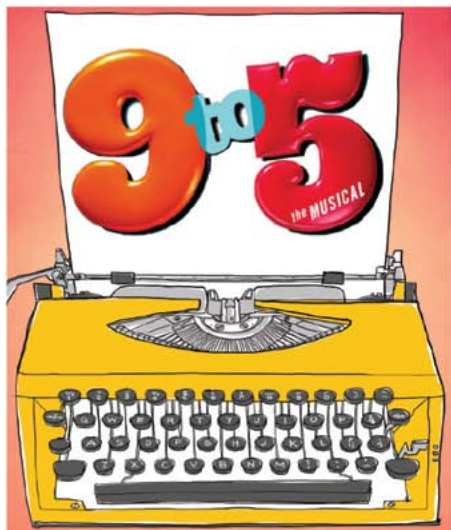
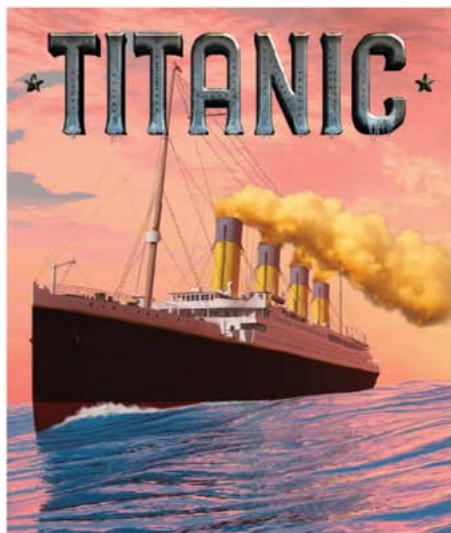


Classes choose a story from the public domain and illustrate it. We create a high quality video story we share with libraries, our patrons and the general public. The Art of Storytelling can be done with any grade at any level of artistry. You can see the finished videos at youtube.com/ThePublicTheatre

**Read more about our Education Programs:
ThePublicTheatre.org/student-matinees
or call 782-2211**

2023 SEASON

June 7 - August 26



MSMT
MAINE STATE MUSIC THEATRE  EST. 1959



207-725-8769



MSMT.ORG

Pickard Theatre, Bowdoin College Campus,
1 Bath Road, Brunswick, Maine

Business Listings

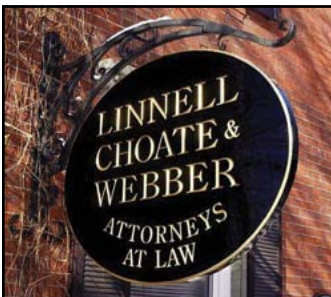
Androscoggin Home Healthcare + Hospice.....207-777-7740
15 Strawberry Ave., Lewiston, ME 04240
www.androscoggin.com

Austin Associates, P.A......207-783-9111
Certified Public Accountants
Auburn • Norway • Skowhegan www.austinpa.com

Berman & Simmons, P.A.207-784-3576
Personal Injury Trial Attorneys
Portland • Lewiston • Bangor
bermansimmons.com

Optometric Associates.....207-784-3564
Home of Healthier Eyes
168 East Avenue, Lewiston, Maine 04240
www.optometricassociates.com

Roy I Snow, Inc.207-782-3734
Electrical Contractor
11 Library Avenue, Auburn, Maine 04210
www.roysnow.com



Small Town Feel ~ Nationwide Reach

Family Law ♦ Estate Planning ♦ Bankruptcy
Civil Litigation ♦ Criminal Defense
Real Estate Law
Business Law ♦ Employment Law
Workers' Compensation ♦ Construction Law

83 Pleasant St. Auburn ♦ 207-784-4563

FULL SERVICE LAW FIRM SINCE 1931 ♦ lcwlaw.com



Supporting the Arts

THE CHAMPOUX GROUP

CHAMPOUX • PEOPLES • PINKHAM • ROGERS
I N S U R A N C E

Personal • Business • Bonding...
...Your Security Is Our Main Concern!

www.MaineInsuranceOnline.com

Specializing in Family Law & Litigation

ANDRUCKI & KING

ATTORNEYS AT LAW

207.777.4600 • ANDRUCKILAW.COM
179 LISBON STREET, LEWISTON, ME 04240

Emerson
 **TOYOTA**

990 Center St. Auburn, ME
emersontoyota.com (207) 784-1348

*“Where You Buy Is As Important
As What You Buy”*

Optometric Associates

Home of Healthier Eyes

Douglas J. Henry, O.D., Ph.D
Diplomate, American Board of Optometry
Stephen L. Ebersole, O.D.
Diplomate, American Board of Optometry
Abigail R. Heroth, O.D.

- Comprehensive Eye Exams
- Over 1000 Fashion Frames In Stock with On-Site Lab for Fast Service
- Contact Lens Specialists
- **New** Dry Eye Center
- Eye Disease Treatment
- Laser Surgery Co-Management



Prescription and Non-Prescription Sunglasses



Serving L/A for more than 60 Years

784-3564

168 East Ave., Lewiston

www.optometricassociates.com

E-mail: respond@optometricassociates.com



Medicare, Most Insurance & CareCredit™ Accepted

THE PUB BAXTER
BREWING CO.

PRESENT YOUR TICKET FROM PLAYBILL EVENT FOR \$5 OFF YOUR BILL!*

*TICKET MUST BE FROM SAME-DAY
*NO CASH VALUE

120 MILL STREET - LEWISTON, ME
WWW.THEPUBATBAXTER.COM



DeBlois Electric, Inc.

ELECTRICAL CONTRACTOR • DESIGN BUILD

Building Lasting Relationships Since 1967

- Service • Small Projects • Generators • Smart Homes

www.debloiselectric.com
Lewiston, ME • 207-783-6512



Bank Where You Belong

1000 Lisbon Street
Lewiston, ME 04240

836 Center Street
Auburn, ME 04210

207-783-1475

www.centralmainecu.com

The Magic of Live Performance:

Energy • Connection • Laughter • Sorrow
Mystery • Surprise • Wonder • Applause!

Your support makes all this, and more, possible. THANK YOU!



Visbaras Law
&
Excalibur Title
Company of Maine
— LLC —

Providing quality legal services since 1986 in real estate closings, titles and title insurance, zoning and land use, business start-ups, residential and commercial property sales, and individual wills and trusts.

K. Alexander Visbaras, Esq.
195 Center Street
Auburn, Maine 04210

207-376-3126
207-376-3127
kalex@visbaras.com

PENMOR
LITHOGRAPHERS

MARKET YOUR BUSINESS
with **HIGH-IMPACT** PRINT



Commercial Offset Printing
Digital Small Run Printing
Wide Format Signage Printing
Mailing and Fulfillment Services

8 Lexington Street • P.O. Box 2003 • Lewiston, ME 04241-2003
Tel: 207.784.1341 • 1.800.339.1341 • Fax: 207.784.2892
www.penmor.com

Courtesy, Quality and Service . . .
A Winning Combination
Since 1939



Employee Owned

Ruburn • Lewiston • Augusta
Dixfield • Rumford • Lisbon Falls
Topsham • Brunswick • Freeport

Eat In, Carry Out, Event Catering

samsitalian.com

warp+weft

The arts bring
texture to
our lives and
community.

Brand with
texture.

f in @

warpweftbranding.com



Blais Flowers

GIFT SHOP & GREEN HOUSE

539 Webster Street
Lewiston, Maine 04240
Phone: (207) 783-8566
www.blaisflowers.com

*Your florist
for every occasion.*



PLATZ ASSOCIATES

Since 1980

Architects • Engineers

Construction Managers

*Supporting the Arts
in our community
for over 35 years.*

TWO GREAT FALLS PLAZA • AUBURN, MAINE • 04210 • 207 784 2941



YOUR FUTURE STARTS HERE

Earn a high-quality education with one of the lowest tuition rates in New England.

Central Maine Community College offers over 40 degrees and professional development opportunities, all for the lowest tuition in New England. Choose from on-campus, hybrid, or 100% online courses designed to fit into your busy schedule.

We're here for you every step of the way.

FOR CUSTOMIZED TRAINING AND PROFESSIONAL DEVELOPMENT OPPORTUNITIES, VISIT WWW.CMCC.EDU/WORKFORCE

www.cmcc.edu

(207) 755-5273

1250 Turner Street • Auburn

Notice of Non-discrimination: Central Maine Community College is an equal opportunity/affirmative action institution and employer. For more information, please contact Human Resources at 207-755-5396 or humanresources@cmcc.edu.



FISH BONES



JOIN US BEFORE OR AFTER THE SHOW

FISH BONES GRILL

70 LINCOLN ST., LEWISTON, ME

(207) 333-3663 | www.fishbonesgrill.com

We are proud to support the arts in our community.

When you're always on the go, you need a bank that's always there for you. Our suite of personal and business products are designed to make banking easier, no matter what corner of the world you're in.

WE HOPE YOU ENJOY THE SHOW!

MEMBER FDIC



A Division of Maine Community Bank

MECHANICS SAVINGS

AUBURN BRUNSWICK LEWISTON WINDHAM
207-786-5700 mechanicssavings.com

Alphabetical Business Directory

Androscoggin Bank	A-5
Androscoggin Home Healthcare + Hospice	A-7, C-3
Andrucki & King	C-4
Arts & Culture LA	C-12
Austin Associates	C-3
Axis Natural Foods.....	A-8
Bates Theatre & Dance	Inside Front Cover
Bates Arts Collaborative	Inside Back Cover
Berman & Simmons	A-2, C-3
Blais Flowers.....	C-8
Business Listings	C-3
Central Maine Community College	C-9
Central Maine Credit Union.....	C-6
Champoux Group, The	C-4
Computer Place, Inc, The	A-6
Cote Corporation, The	A-7
DaVinci's	A-5
DeBlois Electric	C-6
Dirigo	A-6
Dun Roamin' Tree Farm	A-9
Emerson Chevrolet Buick	A-10
Emerson Toyota	C-4
Fish Bones Grill	C-9
FX Marcotte	A-8
Franco Center, The.....	A-4
Hammond Lumber	A-11
Leary & DeTroy	A-6
Linnell, Choate & Webber	C-3
Lisa Laliberte State Farm Insurance.....	A-10
Maine Family Federal Credit Union	A-11
Maine Music Society	A-3
Maine State Music Theatre	C-2
Maple Way Dental Care	A-12
Mechanics Savings	C-9
Midcoast Symphony Orchestra	A-5
Norman, Hanson & DeTroy, LLC	A-8

continued

Alphabetical Business Directory

Optometric Associates	C-3, C-5
Orphan Annie's Antiques	A-11
Ouellette & Associates	A-9
Pat's Pizza	A-10
Penmor Lithographers.....	C-7
PERFORMANCE! AD SALES	C-11
Platz Associates	C-8
Rinck Advertising.....	A-9
Roopers	A-10
Roy I. Snow, Inc	A-2, C-3
Sam's Italian Foods, Inc	C-7
Schooner Estates	Back Cover
Studio 88	A-6
The Pub at Baxter Brewing	C-5
The Public Theatre	A-1
Visbaras Law LLC	C-6
warp + weft	C-7

**Proceeds from advertisements in
PERFORMANCE! provide important
support to the Arts in your community.**

**Contact us to advertise in this playbill
for 2023-24.**

Penny Drumm • 207.333.3386
penny.smartmanagement@gmail.com





17 Ways to HAVE FUN in L/A



- **Androscoggin Historical Society** androhistory.org
- **Auburn Public Library** auburnpubliclibrary.org
- **Bates Dance Festival** batesdancefestival.org
- **Bates College Museum of Art** bates.edu/museum
- **Community Little Theatre** lact.com
- **Franco-American Collection at USM** usm.maine.edu/franco-american-collection
- **Franco-Trail L/A**
- **Franco Center** francocenter.org
- **L/A Arts** laarts.org
- **Lewiston Public Library** lplonline.org
- **Maine Music Society** mainemusicsociety.org
- **Midcoast Symphony Orchestra** midcoastsymphony.org
- **Museum in the Streets trail** museumla.org
- **Museum L-A** museumla.org
- **Olin Concert Series** bates.edu/olin-concert-series
- **The Public Theatre** thepublictheatre.org
- **The Public Art trail** laarts.org



MUSIC



LITERARY ARTS



THEATER



ART+VISUALCULTURE MUSEUM OF ART



DANCE

CELEBRATE THE ARTS AT BATES!

**BATES | ARTS
COLLABORATIVE**

<http://www.bates.edu/events/arts/>

For more information about the Bates Arts Collaborative, see [Bates.edu/arts](http://www.bates.edu/arts)

[back to Directory Listing](#)

We just might be the
Right Fit
for you too!



*Claudette
Martel*

*Gerry
Martel*



*Schooner Estates
Tenants Since 2020*



Schooner Estates
Senior Living Community

784-2900 • www.SchoonerEstates.com

Supporting the Arts in L/A for more than 25 years

[back to Directory Listing](#)