



the **PUBLIC**
THEATRE

PERFORMANCE! 2022-23

A Playbill for The Public Theatre and Maine Music Society

DANCE

THEATER



JOIN US FOR THE 2022 SEASON

HURRICANE DIANE

By Madeleine George

Directed by Kush Sharma '23

An Honors Thesis production in Directing

GANNETT THEATER

NOV 3 @ 7:30PM, NOV 4 @ 7:30PM

NOV 5 @ 5:00 PM, NOV 6 @ 2:00PM

NOV 7 @ 7:30PM

In this Obie-winning comedy with a twist, Pulitzer Prize finalist Madeleine George pens a hilarious evisceration of the blind eye we all turn to climate change and the bacchanalian catharsis that awaits us, even in our own backyards.

ANANYA DANCE COMPANY

DASTAK, I WISH YOU ME

SCHAEFFER THEATRE

MON, NOV 7 @ 7:30PM

In partnership with the Bates Dance Festival, the Department of Theater and Dance is pleased to welcome Ananya Dance Theatre this fall for their performance of *Dastak: I Wish You Me*, a meditation on borders, loss, belonging, home, and liberation.

THE MARCY PLAVIN FALL DANCE CONCERT

SCHAEFFER THEATRE

SAT, DEC 3 @ 5:00PM

SUN, DEC 4 @ 2:00PM

MON, DEC 5 @ 7:30PM

This concert will feature works from faculty and nationally known repertory artists, including Darrius Strong and Ananya Chatterjea.

MUCH ADO ABOUT NOTHING

By William Shakespeare

Directed by Prof. Tim Dugan

SCHAEFFER THEATRE

THU, MARCH 16 @ 7:30PM

FRI, MARCH 17 @ 7:30PM

SAT, MARCH 18 @ 5:00PM

SUN, MARCH 19 @ 2:00PM

MON, MARCH 20 @ 7:30PM

Hilarity abounds in Messina where everyone can see that confirmed bachelor Benedick and headstrong Beatrice are meant for each other—except for Benedick and Beatrice themselves! Or at least they won't admit it. While their friends try to trick the bickering pair into admitting they're in love, their young sidekicks Hero and Claudio start a romance of their own. But will false accusations, broken promises, and even Dogberry (the goofy constable) prevent a happy ending? One of the greatest romantic comedies ever, Shakespeare offers us witty wordplay that dazzles and a raucous celebration that uplifts!

SPRING DANCE CONCERT

SCHAEFFER THEATRE

FRI, APRIL 7 @ 7:30PM

SAT, APRIL 8 @ 5:00PM

SUN, APRIL 9 @ 2:00PM

MON, APRIL 10 @ 7:30PM

An annual favorite, this concert features the work of senior dance majors and independent study projects.

Bates Theater+Dance

Ticket information can be found at: batestheateranddance@eventbrite.com

[back to Directory Listing](#)

the PUBLIC THEATRE

2022-23

Morning After Grace

Sep 16-25 by Carey Crim

A hilarious and heartfelt new comedy for Baby Boomers. Three strangers unexpectedly enter each other's lives in invaluable ways, truthfully tackling the topics of love, loss, sex, aging parents, and even medical marijuana munchies.

The Victorian Ladies' Detective Collective

Nov 4-13 by Patricia Milton

It's "Sherlock Holmes" meets "Arsenic & Old Lace" in this entertaining murder mystery with a modern female sensibility. Two strong-willed sisters in Victorian London team up with a cheeky American actress and set off to solve a crime.

Pilgrims Musa & Sheri in the New World

Mar 3-12 by Yussef El Guindi

A sweet-natured immigrant cab driver and a sassy American waitress negotiate the twists and turns of love and cultural differences in this smart, funny and thought-provoking romantic comedy.

Jeeves and Wooster in 'Perfect Nonsense'

Apr 21-30 by The Goodale Brothers

Inspired by P.G. Wodehouse's hilarious stories of Bertie and his trusted valet Jeeves, this delightfully silly comedy will tickle the funny bone in audiences of all ages.

POLKADOTS: THE COOL KIDS MUSICAL

May 19-21 by Tunstall, Lyons & Borowsky

When 8-year-old Lily moves to a new town, she faces the challenge of being the first Polkadot in an all Square school. This delightful musical with a message combines catchy songs and the humor of a Pixar film into entertaining family fun for ages 4 and up!



ThePublicTheatre.org

782-3200 31 Maple St, Lewiston

Come PLAY with us!



Roy I Snow, Inc.

ELECTRICAL CONTRACTORS

Commercial Residential Industrial

Serving Maine since 1947 RoySnow.com 207.782.3734

Proudly
supporting the
arts
in our
community.

**BERMAN &
SIMMONS**
TRIAL ATTORNEYS

PORTLAND

LEWISTON

BANGOR

800 244 3576

bermansimmons.com



THE Maine Music Society

2022
2023
Season

ARTISTIC DIRECTOR
Dr. Richard Nickerson

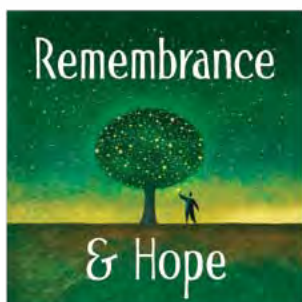
SEASON SPONSORS
Hardy Wolf & Downing
Ladd Foundation



Saturday, November 5
7:30 pm



Sat., Dec. 10 • 7:30 pm
Sun., Dec. 11 • 3:00 pm



Sat., March 11 • 7:30 pm
Sun., March 12 • 3:00 pm



Sat., May 13 • 7:30 pm
Sun., May 14 • 3:00 pm

FRANCO CENTER • LEWISTON

For tickets call 333-3386 or visit www.mainemusicsociety.org

Entertainment on the Riverfront

Franco Center Box Office 207-689-2000



The Male Intellect: An Oxymoron?

International comedy

Thursday, Oct. 6



Sights & Sounds of Christmas

Spectacular light show

Dec. 17 & 18



Echoes of Floyd

*Pink Floyd Tribute
Band*

Saturday, Oct. 8



Schooner Fare

*Long-time
favorite Band*

Friday, Feb. 3



Fright Night

*Walk through our
creepy crypt*

Oct. 25, 26, 27



Josee Vachon

*Popular French
performer*

Saturday, March 4



Magic of the Steelgraves

*Family-friendly magic
and illusion show*

Saturday, Nov. 12



Studio Two—A Beatles Tribute

*The Beatles Before
America*

Friday, March 31



Runnin' Down a Dream

Tom Petty Tribute Band

Saturday, Nov. 19



Silver Circus

*Family-friendly magic
show*

Saturday, April 8



Don Campbell Christmas

Festive holiday concert

Friday, Dec. 16



La Rencontre

Lunch & Entertainment

Sept. 8, Dec. 8, March 9,
June 22

46 Cedar Street
Lewiston, Maine
FMI: francocenter.org

On the Riverfront

FRANCO
CENTER



Performing Arts & Entertainment

MIDCOAST SYMPHONY ORCHESTRA

2022 – 2023 SEASON

Concerts are held at 7:00 p.m. at the Franco Center, Lewiston

Season Opener

October 29, 2022

Seven O'Clock Shout
Coleman

Piano Concerto No. 2
Shostakovich
Chiharu Naruse, Pianist

Symphony No. 4
Brahms

Favorite Music for All Ages

January 14, 2023

Hungarian March
from *The Damnation of Faust*
Berlioz

Tubby the Tuba
Featuring Douglas Ertman & Denise Shannon
Kleinsinger

Danzon No.2
Marquez

Yankee Doodle
Joel Preston, "Conduct the Orchestra" Winner
Arr. Gould

Piano Concerto in A Minor
Mesa Schubeck, Pianist and Concerto Winner
Grieg

Capriccio Espagnol
Rimsky-Korsakov

Tried and True, Plus a Newer Crew

March 18, 2023

Symphony No.35 in D major,
K. 385, "Haffner"
Mozart

Concerto in D Minor
for Two Violins
*Eva Gruesser & Roban Smith,
Violinists*
Bach

Propellers in the Sun
Porter

Symphony No.3
Price

French Impressions

May 20, 2023

Hiroya Mura, Guest Conductor

D'un matin de printemps
Boulanger

Les Indes Galantes, Suite No.1
Rameau/Arr. Dukas

La Valse
Ravel

Pictures at an Exhibition
Mussorgsk/Orch. Ravel

'70s Extravaganza Classical Night Fever

Saturday, June 10, 2023 • 7:00 p.m.

MSO teams up with **Motor Booty Affair**, Maine's own 70s disco/funk tribute band. This world-class performance transports you on a journey through some of the best hits of the 1970s.

For ticket information visit:
MidcoastSymphony.org
or call: 207-481-0790



**Sit back,
relax,
and enjoy
the show!**

At Androscoggin, we understand and appreciate the joy performers bring to the people in our communities and are proud to support the arts.

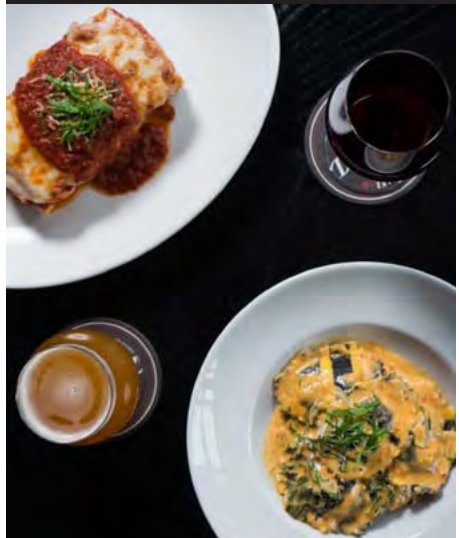
**Androscoggin
Bank**

Member FDIC

A Banking Force For Good



Dinner and a concert in perfect harmony.



150 MILL STREET, LEWISTON
WWW.DAVINCISEATERY.COM

DaVinci's
»• EATERY •«



Leary & DeTroy

ATTORNEYS AT LAW

- Workers Compensation
- Criminal Law
- Personal Injury
- Divorce & Custody
- Social Security Disability
- Disability Discrimination

Justin W. Leary
Benjamin E. DeTroy

90 Main Street • Auburn
782-3275
www.LearyandDeTroy.com
Free Initial Consultation



Learn your rights and obtain experienced, effective legal representation




• NETWORKS • SALES
• SECURITY • REPAIR




"Honest Job, Honest Price"

t. 207.783.7232
f. 207.783.7260
Weekdays 9AM – 5PM
www.tcpme.com
www.facebook.com/tcpme

1485 Lisbon Street
Lewiston Maine 04240
info@tcpme.com



DIRIGO
FEDERAL CREDIT UNION

WWW.DIRIGOFUCU.COM



STUDIO 88 MUSIC SCHOOL

SUZUKI TALENT EDUCATION • PIANO AND VIOLIN



Rachel Eastman Feeley
Martha Gail Feeley

Studio88music@aol.com
207-344-9145





ANDROSCOGGIN
Home Healthcare
+ Hospice

Proudly Supporting the Arts

Androscoggin.org

The Cote Corporation



- Crane & Rigging Services • Trucking • Millwright
- Machinery Moving • Warehousing
- Cranes up to 300 Ton Capacity
- Tip Height 361'

DEDICATED TO EXCELLENCE!

www.cotecrane.com • 800-696-6282
2980 Hotel Road, Auburn, ME 04210

Good Health to you
and the Planet too!

Serving Maine
Since 1970

AXIS NATURAL FOODS

120 Center Street Plaza
Auburn, Maine 04210
(207) 782-3348
axisnaturalfoods.com

Natural & Organic Foods • Vitamins • Herbal Products
Books • Body Care • Organic Produce

A Maine Pioneer in Organic Farming...

Earth Day Every Day!
Organic Wine and Beer • Home Brewing • Gluten Free Items
Organic Produce • Monthly Specials



132 Lincoln St.
Lewiston, Maine 04240
(207) 783-8593

130 Western Ave.
South Portland, Maine 04106
(207) 775-5381

www.fxmarcotte.com

A Commitment To Excellence



Norman Hanson & DeTroy is
a proud supporter of The Maine
Music Society, The Public Theatre
and the arts community in Maine.

nhdlaw.com

Attorneys at Law

**NORMAN
HANSON
DETROY**

Experienced. Efficient. Effective.

Portland (207) 774-7000

Lewiston (207) 777-5200

If

YOU LOOK CLOSELY

you'll see

the Arts
change
everything.



113 Lisbon Street
Lewiston, Maine 04240
(207) 755-9470
www.rinckadvertising.com

OUELLETTE & ASSOCIATES, P.A.
CERTIFIED PUBLIC ACCOUNTANTS

1111 Lisbon Street
Lewiston, Maine 04240
(207) 786-0328 • Fax (207) 783-9377
www.oacpas.net

- Accounting
- Auditing
- Tax Services
- Bookkeeping Services
- Consulting Services
- Business Valuation

Ed Buschmann's
DUN ROAMIN' TREE FARM, LLC



Fresh Christmas Trees
Choose 'n Cut
& Pre-Cut Available

75 Dyer Road
Lewiston, Maine
04240
207 - 577-5878



Maine Firewood
Dry Winter Hardwood
- Stoves and Fireplaces
Dry Summer Softwood
- Fire Pits and Camping

THERE WILL BE DRAMA

AND MUSIC AND DANCING
FOLLOWED BY COCKTAILS
AND CELEBRATION



Roopers
EST. '92

AUBURN

301 Main Street, Auburn | 783.9098
545 Minot Ave, Auburn | 783.2047

LEWISTON

794 Sabattus Street, Lewiston | 783.6353
686 Main Street, Lewiston | 344.1200
1420 Lisbon Street, Lewiston | 333.3095

OXFORD

980 Main Street, Oxford | 539.6072

EMERSON



CHEVROLET



BUICK®

946 Center St. • Auburn

emersonchevy.com

(207) 784-3503 • (800) 696-0766



Lisa Laliberte, Agent

224 Russell Street
Lewiston, ME 04240
Bus: 207-783-3332
lisa.laliberte.gqph@statefarm.com



-FOOD & SPIRITS-

Serving the L/A area since 1985!

Full-Service Family Restaurant

Dining Room and Take-Out Hours
11:00 AM - 9:00 PM Daily

Hot and Cold Sandwiches • Pizza
Pasta • Desserts • Lunch • Dinner
Full-service Bar • Maine Micro-Brews
Gift Certificates

85 Center Street • Auburn, Maine

Call us at 207-784-8221

patsauburn.com



Online Banking
 Mobile Banking
 Loans
 Checking
 Savings
 Credit Cards
 And more!



Maine Family
 Federal Credit Union

555 Sabattus Street | 831 Minot Avenue
 Lewiston, ME 04240 | Auburn, ME 04210
 (207) 783-2071

Serving our
 community since 1938



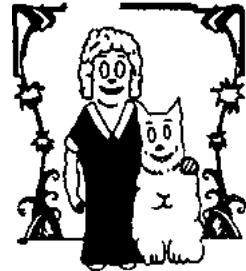
mainefamilyfcu.com

@Mainefamilyfcu



Orphan Annie's Antiques

New England's largest selection of Art Deco and Art Nouveau. Tiffany, Steuben, Gallé, and other prominent French and American art glass. Furniture, lighting, and vintage clothing. Large collection of estate and costume jewelry. Wide selection of dinnerware, including Fiesta and Depression glass. Featured in Down East, March '96. Open Mon.-Sat., 10-5; Sun. 12-5. Three floor warehouse sale every Monday 10:00 am - 1:00 pm at 110 Turner Street.



96 Court Street (across from the courthouse), Downtown Auburn • 207-782-0638
 orantiques@myfairpoint.net • OrphanAnniesMe.net

Hammond
 Lumber Company

22 LOCATIONS ACROSS MAINE & NEW HAMPSHIRE

AUBURN • BANGOR • BAR HARBOR • BELFAST • BELGRADE
 BLUE HILL • BOOTHBAY HARBOR • BRUNSWICK • BUCKSPORT
 CALAIS • CAMDEN • CHERRYFIELD • DAMARISCOTTA • ELLSWORTH
 FAIRFIELD • FARMINGTON • GREENVILLE • MACHIAS • PORTLAND
 ROCHESTER (NH) • ROCKLAND • SKOWHEGAN

WWW.HAMMONDLUMBER.COM



Kitchen,
 Bath & Flooring
 Center

A Division of Hammond Lumber Company

- ✓ FRIENDLY AND PROFESSIONAL SALES STAFF
- ✓ COMPLETE SHOWROOM WITH FUNCTIONING DISPLAY
- ✓ FREE 3D DESIGN SERVICES WITH PURCHASE OF MATERIALS

**Revitalize the
 Heart of your Home.**



YOUR SMILE. OUR PRIORITY.

Maple Way Dental Care is dedicated to the health and vitality of your smile. Drs. Rose, Reyes, Malang, Priest, and the rest of the team are committed to meeting your preventative, restorative and cosmetic dental needs. We want you to look and feel your best!

From check-ups to more advanced procedures, our priority is to keep you smiling. Maple Way Dental Care will develop a treatment plan that fits your unique needs. Give us a call to schedule an appointment!



Welcoming new patients. Emergencies seen the same day.
Most insurance plans are welcome.

Rosemarie G. Sheline, DDS • Cherith Reyes, DMD
Jose R. Malang, DMD • Christopher Priest, DMD
110 Canal Street, Lewiston
Maplewaydentalcare.com • 207-784-2211



The Public Theatre was founded to bring high quality professional theatre to the people of Maine, at an affordable price. We strive to make our presentations accessible to all, especially those less likely by tradition or inclination to attend live theatre. In choosing our season, we look for plays that speak from the heart; that are life-affirming and uplifting even when the subject matter is dark or painful; that use our language in powerful and provocative ways; that invite the audience to see their world in a new way. Artistic excellence is central to the mission of The Public Theatre.

The Public Theatre is a member of Theatre Communications Group (TCG), the national organization for the American theatre.

Board of Directors

Kari Grant-Gragon	President
Jennifer Malloy.....	Vice President/Secretary
Thomas H. Platz	Treasurer
Deana Albert	Colby Michaud
Peter Kowalski	Christopher Schario
Heidi McCarthy	

Associate Members: Sue Brown, Linda Chiaravelotti, Marilyn Closson, Mary Ellen Costello, Kathy Gleason, Dina Jackson, Kathy Lawrence, Ben & Bonnie Lounsbury, Elaine Makas, Alice Mogensen, Chip Morrison, Carol Murrell Sheri Olstein, Jim Pittman, Polly Robinson, Cathy Snook, Susan Weiss

Staff

Christopher Schario	Executive/Artistic Director
Janet Mitchko	Co-Artistic Director
Carol Ham.....	Business Manager
Jennifer Madigan	Asst. Director Marketing/Development
Adam P. Blais	Education/Development Director
Dmitri Kubbs.....	Technical Director
Kathy Lawrence, Reen Robillard	Box Office Staff
Ellie Dow.....	House Manager
Liz Carlson	Dramaturg/Literary Advisor
Ben Lounsbury.....	Video Archivist

THE PUBLIC THEATRE takes pride in recognizing our season sponsors. We seek to develop a partnership with local businesses working together for the enrichment of the Lewiston-Auburn area. The following businesses have joined us in this partnership. If you would like to see your company listed here, please contact us regarding sponsorship opportunities.

SEASON UNDERWRITERS

[Austin Associates](#)
[Maine Magazine](#)
[Platz Associates](#)

[Sun Journal](#)
[WOXO 92.7 & WIGY 105.5/95.7](#)
[The Shubert Foundation](#)

CORPORATE SHOW SPONSORS

[Androscoggin Bank](#)
[Auburn Manufacturing](#)
[Bangor Savings Bank](#)
[Baxter Brewing, Co.](#)
[Berube's Complete Auto Care](#)
[Butler Bros.](#)
[Central Maine Healthcare](#)
[Cross Insurance](#)
[Evergreen Subaru](#)

[LA Metro Magazine](#)
[Lee Auto Malls](#)
[Maine Community Bank](#)
[NAPA Coastal Auto Parts](#)
[Norway Savings Bank](#)
[Twin City Times](#)
[Visbaras Law / Excalibur Title, LLC](#)
[Warp + Weft](#)

EDUCATIONAL UNDERWRITERS

[Androscoggin Bank](#)
[Cross Insurance](#)
Helen & George Ladd Charitable Corp.

[Maine Arts Commission](#)
Margaret E. Burnham Charitable Trust
[Onion Foundation](#)

EDUCATION PARTNERS

[Carrabassett Coffee Company](#)
[Hilton Garden Inn - Auburn Riverwatch](#)
[Key Bank](#)

[Lewiston / Auburn Children's Foundation](#)
[Liberty Mutual Insurance](#)

SEASON SUPPORTERS

[Auburn-Lewiston YMCA](#)
[Evergreen Custom Printing](#)
[The Italian Bakery](#)
[Lisa Laliberte State Farm Insurance*](#)
[Maine Lobster Now](#)
[Marden's Discount](#)

[Ramada Hotel & Conference Center](#)
[Roy I. Snow, Inc.](#)
[Sherwin-Williams](#)
[YWCA of Central Maine](#)

**performance sponsors*

GRANT SUPPORT

[Actors' Equity Foundation](#)
[Davis Family Foundation](#)

[Maine Community Foundation](#)
[- Maine Theater Fund](#)



Jeeves & Wooster

PERFECT NONSENSE

A new play adapted from the works of PG Wodehouse
written by the Goodale Brothers

Directed by
Janet Mitchko

Stage Manager
Kelly Hardy*

Costume Design
Kathleen Payton Brown

Set Design
Dmitri Kubbs

Lighting Design
Matthew Brian Cost

Sound Design
Scott O'Brien

CAST

(in order of appearance)

Bertie Wooster Samuel Adams*
Jeeves Michael Frederic*
Seppings J. T. O'Connor*

There will be a 15 Minute Intermission

“JEEVES & WOOSTER in Perfect Nonsense” first presented at
the Duke of York’s Theatre, London on 12 November 2013.
Produced by Mark Goucher and Mark Rubinstein

* Members of Actors’ Equity Association, the union of professional actors and
stage managers in the United States.

JEEVES & WOOSTER in Perfect Nonsense is Sponsored by



**WHERE YOU LIVE. WHERE YOU WORK.
WE'RE HERE FOR YOU.**

We're here to care for you, your family, and your neighbors – your health is our top priority. With three hospitals and over 45 primary and specialty care practices, we work hard to provide you with compassionate, high-quality care where and when you need it most.

Learn more about our services and locations at cmhc.org.



www.cmhc.org



JEEVES & WOOSTER in *Perfect Nonsense* is Sponsored by

YOUR SUBARU SUPERSTORE



Now at....

49 Subaru Drive, Auburn



**Evergreen Subaru
is so proud to support
The Public Theatre.**

JEEVES & WOOSTER in Perfect Nonsense is Sponsored by

We Are Proud to Support The Public Theatre

Why choose us for your banking needs? Because with us, local really does mean local. We understand that our customers want personalized service with modern banking conveniences – and you don't always get both from a big-box bank. When you're always on the go, you need a bank that's always there for you, no matter what corner of the world you're in.

**We are Maine Community Bank –
on your corner and in your corner.
Contact us today!**



MAINE
COMMUNITY BANK

207-786-5705

mainecb.com

MEMBER
FDIC

JEEVES & WOOSTER in *Perfect Nonsense* is Sponsored by

*Best plays from
Broadway and Off-Broadway
and best weekly paper around!*



Drama • Action
Comedy • Tragedy

*You'll find it every week onstage at The Public Theatre
and Online and On the Stands in TCT.*

TWIN CITY TIMES

We Know Community

— L-A's WEEKLY NEWSPAPER! —

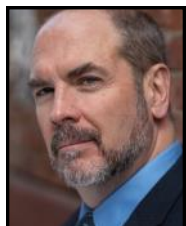
(207) 795-5017 • www.TwinCityTIMES.com



SAMUEL ADAMS - (*Bertie Wooster*) Originally from Manhattan and raised in the Catskills, Sam is thrilled to be making his Public Theatre debut! Regional Theater credits include Mozart in *Amadeus* (Folger Theater in DC), King Henry in *Henry V* (Chesapeake Shakespeare Company in Baltimore), *Red Velvet* (Shakespeare Theater Company in DC), Orlando in *As You Like It* (directed by Aaron Posner), *Midsummer Night's Dream* (Walden, MA), *Summer I Disappeared* (Cambridge, MA), and *Under Milk Wood*. NYC Theater credits include Hamlet in *Hamlet* (Kraine Theater), Joseph Goebbels in *Leni & Joseph* (New Ohio Theater), Dionysus in *The Bacchae* (Miller Theater), Lewis Carroll in *Your Alice* (Ophelia Theater Group), *Summer & Smoke* (Theater Row). Regional Theater. Film/TV: *Time After Time* (ABC), *Mildred Pierce* (HBO), *Red Dead Redemption 2* (Rockstar Games). Directing credits include: *Hamlet*, *The Birthday Party*, *Who's Afraid of Virginia Woolf*, and Chekhov's *The Bear*. He trained at the London Dramatic Academy and received an MFA from Academy for Classical Acting in Washington DC. You tube: *The Unweeded Garden*. Thank you, to my family. Member of AEA, SAG-AFTRA



MICHAEL FREDERIC - (*Jeeves*) Very, very happy to be back at The Public, having appeared on this stage in *Hound of the Baskervilles*, *Around the World in 80 Days*, *Deathtrap*, and several years in *A Christmas Carol*. National Tour: *The Great Divorce*. New York: *After (59E59)*, *The New Morality*, *The Lucky One* (The Mint), *Bill W and Dr Bob* (Soho Playhouse), *The Eyes of Others* (New Ohio), *Summer and Smoke* (Theatre Row), *Night Over Taos* (INTAR – dir. Estelle Parsons). Regional: Dorset Theater Festival, Penguin Rep, Premiere Stages (Best Actor, BroadwayWorld.com), Hudson Stage Company, Fulton Theatre, Cleveland Play House, Florida Studio Theatre, Two River Theatre, Round House Theatre, Playmakers Rep, Stageworks/Hudson. TV: *Law & Order: Organized Crime*, *Bull*, *The Blacklist*, *Odd Mom Out*, *Royal Pains*, *The Men Who Built America*. Thank you to my wife and kids, and to Janet, Chris, and the wonderful staff here at TPT. MFA from UNC-Chapel Hill. www.michaelfrederic.com



J.T. O'CONNOR - (*Seppings*) J.T. is thrilled to be back at The Public Theatre, J.T. appeared here in *The Hound of the Baskervilles*, *The Nerd*, *Rough Crossing*, And as Scrooge in *A Christmas Carol* (07,08,09). Other Theatre credits include, The 2000-2002 National Tour of *Fiddler On The Roof* (W/ Theodore Bikel), *Gypsy* (W/Joyce DeWitt), *High Spirits*, *Uncle Vanya*, *Kiss Me Kate*, *Angel Street*, *Moon Over Buffalo*, *Annie Get Your Gun*, *Wait Until Dark*, and *Funny Girl*. TV and Film credits include *FBI :Most Wanted*, *Evil*, *The Affair*, *Kevin Can Wait*, *The Blacklist*,

The Good Wife (Daniel Hecht), *Law and Order: SVU*, *Alpha House*, *Watching the Detectives*, and *Bridge of Spies*, and an upcoming episode of *The Gilded Age*. J.T. would like to thank Janet and Chris and The Public Theatre Family for welcoming him back. J.T. dedicates his performance to his wife Candace for her love, support and patience. There's not enough laughter in the world!

THE GOODALE BROTHERS - (*Playwrights*) Like many siblings growing up together, writers Robert and David Goodale enjoyed their own, very particular brand of humor. As children they created a range of ridiculous characters that seamlessly evolved into members of their extended family. It was only later that they discovered that P. G. Wodehouse had beaten them to it, in creating an entirely credible world full of even more deliciously bonkers characters. As adults entering the real world, Robert became an actor, while David perused a career as a documentary filmmaker, but both remained committed to making people laugh. In 2010 they were encouraged to combine their comic talents to adapt P. G. Wodehouse's *The Code of the Woosters* for the stage. They finally put pen to paper, and several drafts later, with the blessing of the Wodehouse Estate, *Perfect Nonsense* was born.



JANET MITCHKO (*Director, Co-Artistic Director*) Over the past 30-something seasons Janet has directed numerous TPT productions including *Morning After Grace*, *Dancing Lessons*, *Sexy Laundry*, *Last Gas*, *Hound of the Baskervilles*, *Around the World in 80 Days*, *Beau Jest*, *Animals Out of Paper*, *Visiting Mr. Green*, *Over the River and Through the Woods*, *Dinner with Friends*, and *The Nerd*, among others. Regional productions include *Our Son's Wedding* at Florida Studio

Theatre and *The Heiress* at The Theater at Monmouth, among others. Many moons ago, before life in Maine; Janet lived in midtown Manhattan where she earned her living as an actress, acting teacher and director. She is also a graduate of the acting program at Carnegie-Mellon University, and the very proud mother of Emily bemily bear.



CHRISTOPHER SCHARIO - (*Executive/Artistic Director*) has been Artistic Director of The Public Theatre since 1993. His adaptation of *A Christmas Carol*, published by Dramatists Play Service in 1996, was developed for The Public Theatre and has enjoyed successful productions at professional and amateur theatres throughout the world. In New York he directed for Roundabout Theatre, Westbeth Theatre, Spectrum Stage, American Academy of Dramatic Arts, Drama

Project and Madison Avenue Theatre. Regional theatre directing includes Alabama Shakespeare Festival, Boulder Ensemble Theatre, Kentucky Repertory Theatre, Toledo Repertory Theatre and Millbrook Playhouse. He has acted Off-Broadway, on national tours, regional theater, summer stock, dinner theater, films, soaps and commercials. He has taught at Carnegie-

Mellon University, University of Colorado, University of Tennessee, American Academy of Dramatic Arts, as well as privately in New York. He received a BFA in Acting from Ohio University and an MFA in Directing from Carnegie-Mellon University.

KELLY HARDY — (*Stage Manager*) **The Public Theatre:** Debut. **Broadway:** *Anastasia*, *The Real Thing*. **New York:** 2nd Stage, Fiasco Theatre, Lincoln Center - LCT3, The Public, Vineyard Theatre, Red Bull Theatre, NYMF, Theatre for a New Audience, Working Theatre, Rattlestick Playwrights Theatre, The Actors Company Theatre. **Regional:** Hartford Stage, The Huntington, Goodspeed Opera House, Trinity Repertory Company, Long Wharf Theatre, La Jolla Playhouse, New York Stage and Film, North Coast Rep, Bard SummerScape, Bucks County Playhouse. **International:** Royal College of Music, London; Shakespeare's Globe, London. **Education:** UC San Diego.

DMITRI KUBBS - (*Set Designer/Technical Director*) is excited to be building scenery again. He first came to New England in 2000, working at numerous regional theaters. His work has been seen on Broadway and the golf channel. During a long hiatus from theater he's done custom fabrication, taught environmental education, managed petting zoos, and most recently been raising his son Rowan who also likes to help out at The Public Theatre. He resides in Auburn with his family, animals and a treasured collection of aging iron equipment.

KATHLEEN PAYTON BROWN - (*Costume Designer*) has designed many productions at The Public Theatre over the past 20 years. Previous designs include *Pilgrims Musa and Sheri in the New World*, *Grease*, *Last Gas*, *Enchanted April*, and *Beau Jest*. Kathleen is also a regular designer at Portland Stage. Other credits: Maine State Music Theater, Theater at Monmouth, University of Maine, Bates College Theater, Colby College Theater, Lyric Stage Co., N.J Shakespeare Co., Huntington Theatre Co. Kathleen has been a professional designer for 36 years. She lives in Camden, where she manages her own custom clothing business, and is also the Events Coordinator for The Waldo Theatre in Waldoboro. She is more grateful than ever for the support of her family and colleagues, as without them this creative work would not be possible.

MATTHEW BRIAN COST (*Lighting Designer*) has been designing lights for theater, dance, music and more for the last twenty years, from his alma mater Colby College to greater New England and beyond. Previous work for The Public Theatre includes *Screwball Comedy* and *Pilgrims Musa and Sheri in the New World*. Other select recent credits include *5* by Project 31 Dance at the Boston University Dance Theatre, *Swing!* by Boston Conservatory at Berklee, and *Jonathan/The Good Deli* by Moonbox Productions. Matt lives in East Weymouth, MA with his wife Abby, son Simon and pitbull Roadie.

ERIN FAUBLE - (*Master Electrician*) heralds from the little town of Anderson, SC. After graduating with a BA in Musical Theatre from Converse College, Erin went on to do electrician work at Flat Rock Playhouse in NC. Eventually she moved to Maine in order to Master Electrician and design at Theater at Monmouth (*An Iliad, Pandora's Suitcase, A Midsummer Night's Dream*) and for The Public Theatre (*Be Here Now* and *The Victorian Ladies' Detective Collective*). These days she aspires to be both a professional Lighting Designer and to be a successful mother to her fur-baby—a small, bossy gray cat with enormous green eyes.

SCOTT O'BRIEN - (*Sound Designer*) has composed, designed and engineered theatre and dance for a variety of Off-Broadway and regional theaters across the US. He was the Resident Composer/Sound Designer for American Globe Theatre from 2000-2014, the Chautauqua Theater Company from 2006-2009, the Stella Adler Studio of Acting from 2011-2012, and the Adirondack Theatre Festival from 2013-2015. He has lectured on Sound Design at SUNY-Rockland, Pace University, Fairleigh Dickinson University, The Duke Ellington School for the Arts and Montclair State University (where he was the head of the Sound Design Program from 2015-2019). He was the Resident Composer/Sound Designer for the Great River Shakespeare Festival in Winona, MN for their 2019 and 2021 seasons and his latest projects include a podcast version of the GRSF production of *MacBeth*, and *Black Santa For You*, a YouTube-based holiday web series for children. Film credits include: *Eleanor*; *Godmother of American Fashion* (for VANITY FAIR FILMS) and *Phoenix Rising*; *The Silent Victims Speak*, an award-winning documentary for NobleVision Productions. His most recent project was Lynn Nottage's *Clyde's* for director Melissa Maxwell at the George St. Playhouse (New Brunswick, NJ). His production company and studio Duck & Trout Music are based in Gardiner, ME. This marks his first season collaborating with The Public Theatre.

BLUEE BREWSTER - (*Assistant Stage Manager/Company Manager*) Bluee is excited to be working their first show with The Public Theatre! Born and raised in Lewiston, they feel a sense of homecoming with this production. When not doing Theatre, they can be found working at the Children's Museum & Theatre of Maine. They hope you enjoy this hilarious production!

We are looking for volunteers

Posters ● Mailings ● Ushers

Inquire at the Box Office if you are interested
or call 782-2211



ACTORS' EQUITY ASSOCIATION was founded in 1913 to protect Actors from the severe mistreatment that permeated the industry at that time. Since its inception Equity has had only nineteen Presidents. Its current President is Kate Shindle. The Association consists of over 51,000 distinguished stars and other professional Actors and Stage Managers who work nationwide, from New York's Broadway to Los Angeles, from Minneapolis to Miami Beach, in regional, stock and dinner theatre, and in theatres for young audiences which build the audiences of tomorrow. These Actors and Stage Managers are committed to working in the theatre as a profession, not an avocation, and bring to you the finest professional training and experience. By presenting Equity productions, this theatre offers to you, our audience, the best entertainment presented by the finest quality Actors and Stage Managers that your admission dollars can buy.

The Public Theatre's Assisted
Listening System
was funded in part by

Dr. & Mrs. Ben Lounsbury

and a grant from the

Maine Arts Commission,

an independent state agency
supported by the

National Endowment for the Arts.



We are pleased to offer
hearing assistance free of
charge to help patrons
with hearing difficulties



enjoy our productions to their
fullest, no matter where they are
seated in the Theater. We are using
a system which transmits an FM
signal to a personal receiver outfitted
with lightweight headphones, or neck-
loop for hearing aids equipped with a
T-coil. Please inquire at the Box
Office for more information.

Special Thanks

A huge thank you to all of our wonderful
poster people and ushers

who are too numerous to name.

We couldn't do what we do without YOU!

2022-23 Season Underwriters



AUSTIN ASSOCIATES
CERTIFIED PUBLIC ACCOUNTANTS

Two Great Falls Plaza
Auburn, ME 04210
1-800-605-9263
austinpa.com

maine.
THE MAGAZINE

themainemag.com

Subscribe.

\$60/year for both



MHD

MAINE HOME + DESIGN

mainehomedesign.com

PLATZ ASSOCIATES

Since 1980



Architects • Engineers

Construction Managers

Two Great Falls Plaza
Auburn, ME 04210

207-784-2941
platzassociates.com

Sun Journal

Connecting you with your community

sunjournal.com



GET YOUR TICKETS TODAY!

\$10
Kids'
Tickets



POLKADOTS

the cool kids musical

Book by Melvin Tunstall III • Music by Greg Borowsky and Douglas Lyons
Lyrics by Douglas Lyons • Based on an original concept by Douglas Lyons

FAMILY FUN
for ages 4+

This delightful musical combines catchy songs,
the humor of a Pixar film and a valuable message
into entertaining family fun!

May 20 & 21

Sat & Sun @ 1 pm & 4 pm

\$10 ALL KIDS' TICKETS - \$15 Adults

ThePublicTheatre.org

782-3200

The **PUBLIC**
THEATRE

31 Maple St, Lewiston

Sponsored By:



INDIVIDUAL DONORS

Contributions are the cornerstone of a not-for-profit theatre. Ticket sales generate less than 40% of our income. We thank the following individuals who have supported The Public Theatre with their generous financial contributions. **If you would like to join our Individual Donors, please call 782-2211.**

Star (\$1000+)

Anonymous
Althea Croxford & Phil Blake
Anonymous
Anonymous
Michael McKenzie & Kari Floren
Phillip & Susan Morgan
Sheri Olstein
Jim & Candace Platz
Tom Platz* & Paula Marcus-Platz
Margo & Jack Simmons
The Walworth Family Fund*
Ellen Wasserman*
Susan & Robert Weiss*

Producer (\$500-\$999)

Ed & Louise Buschmann
Marty Corey
Androscoggin County Medical Association
Gretchen & Jerry Davis
Phyllis Deringis
Bill & Cynthia Desoi
Ken & Melinda Emerson
In Memory of Linda G. Gamble
Anonymous
Jim & Julie Jackson
Gary & Lynn Knight
Brian & Jenna Langlais
Ben & Bonnie Lounsbury *
Barbara Oliver
William Phillips
Daniel & Debra Snow

Director (\$250-\$499)

Bruce & Pamela Allen
Glenn Anderson
Ronald & Donna Bissonnette
Jeffrey & Susan Brown
Kitsie & Ned Claxton
Robert & Kari Gagnon
Ralph & Melinda Harder *
Julie Hendrickson
Michael Jones & Judith Head
Darby Ray & Raymond Clothier
Pete Small
David & Kathleen Stuchiner
Anonymous
Ann E. Weiss
David Zellinger

Leading Actor (\$100-\$249)

Deana Albert
Maureen & Michael Aube
Carmen Bennett

* Denotes Theatre Founder

Fred & Janet Bishop
Rev. Dr. Judith Blanchard
David Blocher & Helen Warren
John & Doris Bonneau
Brenda Boothby
Jon Bradshaw
M Elaine Briggs
Carl & Joyce Bucciantini
Anthony Butterall
Katy Cavanaugh
Janice Parvin
Deborah Chandler
Mary Lou Chipala
Rae Clark-McGrath
Barbara Connell
Holly Cooney
Ellen Crawford & Mike Genovese
Marian Dalton
Carol S Davis
Martha Deschaines
Richard & Barbara Diamond
Josephine & Stephanie Dupal
Bruce Edwards
Alice Faucher
Lynda & Dick Giard
George & Martha Gilmore
Rhonda Gioia
Kathy Gleason
Bruce & Elizabeth Grant
Bob Grieshaber
Michelle & Normand Groleau
Jeff & Diane Handler
Greg & Betsy Hanscom
Connie Hitchcock
David & Cori Holt
Barbara Howard & Nick Poulton
Wendi & John Hubbard
Penelope Jessop & David Chittim
Richard & Jackie Jordan
Michael & Janet Joseph
Lee & Ingrid Kendall
Katharina Keoughan
Barbara Keppel
In Memory of Michael Jinbo
Robert & Nancy Kleckner
Paul Knight
Christina Moylan & Thomas Knowlton
Ray & Sue Lagueux
Mr. & Mrs. William Luening
Patricia Mador
Virginia Marczak
Heidi McCarthy & Adam Lee
Andrew & Joanne McKeel
Steve & Nancy Menneally

Armand & Lucille Mercier
Carol & Richard Murrell
Jeff & JoAnn Newell
Dennis & Janet O'Neil
Joel & David Oshansky
Gil Peterson
Luanne & Rex Rhoades
Martha Richardson
Carolyn Robertson
Craig & Carol Robinson
Mitzi & Quimby Robinson
Bruce Rood
Patricia & Stephen Sawyer
Judy Staicer & Robert Schwartz
Susan Wygel & J. Gregory Shea
Mary Snell & Irwin Novak
Susan & Rob
Sharon & David Staszak
Jeff & Sue Sturgis
Bette J. Swett-Thibeault
David & Holly Sysko
Janet & Woody Tarbuck
Stan & Cathy Tetenman
Woody & Susan Trask
Adriann M. Tucker
Sue Tymoczko
Lois & Richard Wagner
Anne Weatherbee
Bridget & Richard Whiting
Liz Wilson
Frank & Louise Wotton

Stage Manager (\$50-\$99)

Dwight Wilcoxson & Tina Agren
Allan Anderson
Tony & Marcia Augello
Paul E Baribault
Paul & Nina Baril
Ed Barrett & Nancy Orr
Colleen Bennett
Jackie Bernier
Linda Bishop
Diane & Eugene Brogan
Cindy Brown
Anne Moreau Burg
Marilyn & Gary Cadman
Anonymous
Carmen Caron
Juliana & Rick Cliffe
Steve & Marilyn Closson
The Condit Family
Janet Cosseboom
Denise Courtemanche
James Cray & Pamela Gross
Suzanne Crowell
Tonya Japp

Carolyn Downing
 Penny Drumm
 Mike & Maggie Dumais
 Jane & David Erickson
 Anonymous
 Paul & Cyndi Fortier
 Barbara Fowle
 William Fuller
 Becky Gauthier
 Patricia Gautier
 Rachel & Steve Goulet
 Donald & Laural Grant
 Maureen & Richard Hargreaves
 Jody Harris
 Lucille Hawley
 Mary E. Houlihan
 Janet Isbell
 Stephen Jacobs
 Anonymous
 James Kearney & Carol Rice
 Joel Leffert
 Joan & Richard Legendre
 Natalie Rose Liberace
 Mary & Vincent Louque
 Theda Lyden
 Connie Machan
 Diane Maheux
 Gerry & Claudette Martel
 Pamela & Michael Matzinger
 Joanne McDermott
 Sheila McGarr
 Linda D McPhee
 Nancy Morris
 Joanne & Earl Morse
 Charles & Marguerite Noonan
 Helene & Lewis Perry
 Debra Phillips
 Jeffrey Pinnette
 Carl Prouty
 Grace & Kenneth Reed
 Merrill Rollins
 Suzanne R. Roy
 Greg Sharpe
 Karen Shumac & Larry Whittington
 Kristin Sweeney
 Maggie Smith
 Patricia Snyder
 Elaine & Scott St. Pierre

Wendy & Marc Tardif
 Ralph & Donna Thivierge
 Lee & Stephanie Upton
 Anonymous
 Bethany & Paul Whalon
 Diane Whitmore
 Andy & Marlene Witham
 Kathy Wyatt

Supporting Actor (\$20-\$49)

Judy Abromson
 Cecile Potvin
 Pamela Amrein
 James Baldwin
 Bruce & Pam Bell
 Lauren Bozzi
 Frank Broadbent
 Aaron & Ellen Burke
 Kathi Burke
 Presley, Kaylin, Gavin
 Sandra Carder
 Catherine & Kevin Carey
 Jacqueline Caron
 Sandra Chamberlain
 Robert & Tookie Clifford
 Johannah Degrandprie
 Abigail Douglas
 Nancy Dube
 Christina Finneran & Paul First
 Ruth H. Fiske
 Anna & Ed Flotten
 Denis & Pauline Fortier
 Judi Foye
 Katherine Garren
 Susan Glines
 Susan & Kenneth Gordon
 Evelyn Greenlaw
 Mrs. Gisele Guerrette
 Mr. & Mrs. Rollie Heckethorn
 Linda A. Hill
 William Hodgkins
 Kate Holthausen
 Nan Hughes & Norman Rich
 Digger & Nancy Jones
 Verdell Jones
 Susan Kane
 Cheryl King

Rodney C. Kuhl
 Larry & Carol LaBossiere
 Mary & Dick LaFontaine
 Deborah Lamb
 Tina Lambert
 Jerryanna LaPerriere
 John Leddy
 Judith Lloyd
 Caj MacDonald
 Jennifer & Michael Malloy
 Eileen Manglass
 Susan Martin
 Betty McCall
 Jackie McLaughlin
 Roland Morin & Laura Cote
 Debbie Nelson
 David Newer
 William Peden
 Joan Pedersen
 Joan & Rose Pelletier
 Emily Reese
 Lucille Rioux
 Marie Sacks
 Regina Schaare-Denio & Dennis Denio
 Barbara & Michael Shapiro
 Alison Smith
 Sue & Ken Spalding
 Cynthia Stengel
 Anita L. Stone
 Lind Stone
 Elise Straus-Bowers
 Richard & Jackie Strong
 Terry Prince-Tarsetti
 Thomas Tatro & Jane Stone Tatro
 Lisa Therrien
 Carol & Steve Thomas
 Nancy Tremblay
 Cheryl Van Messel & Charles Bross
 Joseph Varuolo
 Melissa & Gary Veilleux
 Margaret Volock
 Paula & Richard Walker
 Shawna Wells
 Patricia A. West
 Pearle Williamson
 John & Betty Woodbury
 Cindy Wu

This list reflects donations of \$20 or more
 received through March 31, 2023

[Donate Online](#)

Enjoy a hot cup of coffee today!
CARRABASSETT
COFFEE COMPANY

Call Toll Free: 1-888-292-BEAN
carrabassetcoffee.com

Educational Programming



DID YOU KNOW?

In the past 30 years, over 107,000 students have attended a performance at The Public Theatre for just \$5?

The Public Theatre's Education Programs provide children with the opportunity to experience live professional theatre, serve as an educational resource for Maine schools, enrich the lives of young people, and encourage our next generation's participation in the cultural life of their community.

This programming is made possible through the generous support of our Education Sponsors and you, our patrons.



Each Student Matinee features \$5 tickets and a post-show talkback with the actors and director. Student rates are also available for our public performances. To help Educators make the most of the experience, free study guides are available prior to attending and pre or post-show workshops about the production are available upon request. This experience cultivates the habit of participating in the cultural life of their community and gives them an experience that will expand their world in new and exciting ways.



As theatre professionals we have taken our skills and created FREE live and virtual workshops that can easily fit into most curricula. These workshops were originally created to help support teachers and the Arts in schools during the pandemic and presented virtually to classes as far away as Monhegan! They were so successful they are now a regular part of our programming! Serving Grades 3-12.

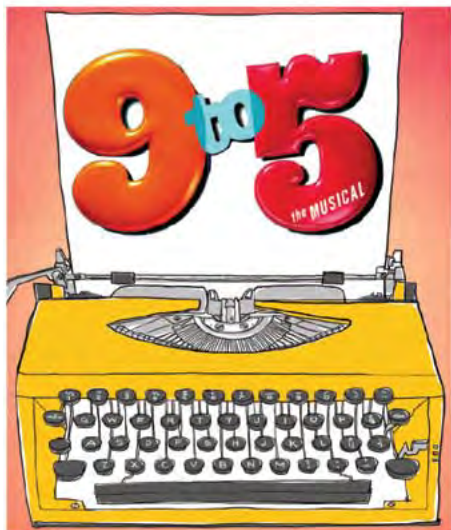
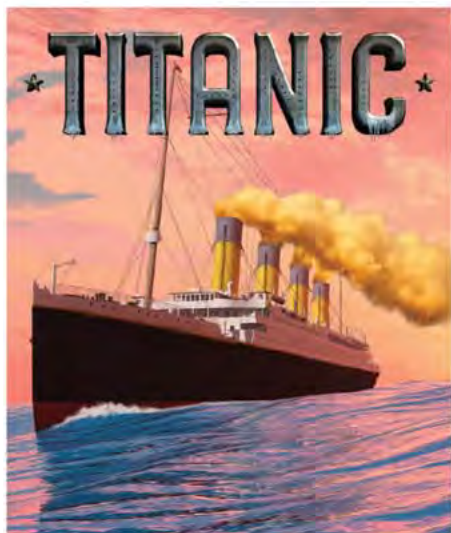


Classes choose a story from the public domain and illustrate it. We create a high quality video story we share with libraries, our patrons and the general public. The Art of Storytelling can be done with any grade at any level of artistry. You can see the finished videos at youtube.com/ThePublicTheatre

**Read more about our Education Programs:
ThePublicTheatre.org/student-matinees
or call 782-2211**

2023 SEASON

June 7 - August 26



MSMT
MAINE STATE MUSIC THEATRE EST. 1959



207-725-8769



MSMT.ORG

Pickard Theatre, Bowdoin College Campus,
1 Bath Road, Brunswick, Maine

Business Listings

Androscoggin Home Healthcare + Hospice.....207-777-7740
15 Strawberry Ave., Lewiston, ME 04240
www.androscoggin.com

Austin Associates, P.A......207-783-9111
Certified Public Accountants
Auburn • Norway • Skowhegan www.austinpa.com

Berman & Simmons, P.A.207-784-3576
Personal Injury Trial Attorneys
Portland • Lewiston • Bangor
bermansimmons.com

Optometric Associates.....207-784-3564
Home of Healthier Eyes
168 East Avenue, Lewiston, Maine 04240
www.optometricassociates.com

Roy I Snow, Inc.207-782-3734
Electrical Contractor
11 Library Avenue, Auburn, Maine 04210
www.roysnow.com



Small Town Feel ~ Nationwide Reach

Family Law ♦ Estate Planning ♦ Bankruptcy
Civil Litigation ♦ Criminal Defense
Real Estate Law
Business Law ♦ Employment Law
Workers' Compensation ♦ Construction Law

83 Pleasant St. Auburn ♦ 207-784-4563

FULL SERVICE LAW FIRM SINCE 1931 ♦ lcwlaw.com



THE CHAMPOUX GROUP

CHAMPOUX • PEOPLES • PINKHAM • ROGERS
I N S U R A N C E

Personal • Business • Bonding...

...Your Security Is Our Main Concern!

www.MaineInsuranceOnline.com

Supporting the Arts

Specializing in Family Law & Litigation

ANDRUCKI & KING

ATTORNEYS AT LAW

207.777.4600 • ANDRUCKILAW.COM
179 LISBON STREET, LEWISTON, ME 04240

Emerson
 **TOYOTA**

990 Center St. Auburn, ME
emersontoyota.com (207) 784-1348

*“Where You Buy Is As Important
As What You Buy”*

Optometric Associates

Home of Healthier Eyes

Douglas J. Henry, O.D., Ph.D
Diplomate, American Board of Optometry
Stephen L. Ebersole, O.D.
Diplomate, American Board of Optometry
Abigail R. Heroth, O.D.

- Comprehensive Eye Exams
- Over 1000 Fashion Frames In Stock with On-Site Lab for Fast Service
- Contact Lens Specialists
- **New** Dry Eye Center
- Eye Disease Treatment
- Laser Surgery Co-Management



Prescription and Non-Prescription Sunglasses



Serving L/A for more than 60 Years

784-3564

168 East Ave., Lewiston

www.optometricassociates.com

E-mail: respond@optometricassociates.com



Medicare, Most Insurance & CareCredit™ Accepted

THE PUB BAXTER
BREWING CO.

PRESENT YOUR TICKET FROM PLAYBILL EVENT FOR \$5 OFF YOUR BILL!*

*TICKET MUST BE FROM SAME-DAY
*NO CASH VALUE

120 MILL STREET - LEWISTON, ME
WWW.THEPUBATBAXTER.COM



DeBlois Electric, Inc.

ELECTRICAL CONTRACTOR • DESIGN BUILD

Building Lasting Relationships Since 1967

- Service • Small Projects • Generators • Smart Homes

www.debloiselectric.com
Lewiston, ME • 207-783-6512



Bank Where You Belong

1000 Lisbon Street
Lewiston, ME 04240

836 Center Street
Auburn, ME 04210

207-783-1475

www.centralmainecu.com

The Magic of Live Performance:

Energy • Connection • Laughter • Sorrow
Mystery • Surprise • Wonder • Applause!

Your support makes all this, and more, possible. THANK YOU!



Visbaras Law
&
Excalibur Title
Company of Maine
————— LLC —————

Providing quality legal services since 1986 in real estate closings, titles and title insurance, zoning and land use, business start-ups, residential and commercial property sales, and individual wills and trusts.

K. Alexander Visbaras, Esq.
195 Center Street
Auburn, Maine 04210

207-376-3126
207-376-3127
kalex@visbaras.com

PENMOR
LITHOGRAPHERS

MARKET YOUR BUSINESS
with **HIGH-IMPACT** PRINT



Commercial Offset Printing
Digital Small Run Printing
Wide Format Signage Printing
Mailing and Fulfillment Services

8 Lexington Street • P.O. Box 2003 • Lewiston, ME 04241-2003
Tel: 207.784.1341 • 1.800.339.1341 • Fax: 207.784.2892
www.penmor.com

Courtesy, Quality and Service . . .
A Winning Combination
Since 1939



Employee Owned

Ruburn • Lewiston • Augusta
Dixfield • Rumford • Lisbon Falls
Topsham • Brunswick • Freeport

Eat In, Carry Out, Event Catering

samsitalian.com

warp+weft

The arts bring
texture to
our lives and
community.

Brand with
texture.

f in @

warpweftbranding.com



Blais Flowers

GIFT SHOP & GREEN HOUSE

539 Webster Street
Lewiston, Maine 04240
Phone: (207) 783-8566
www.blaisflowers.com

*Your florist
for every occasion.*



PLATZ ASSOCIATES

Since 1980

Architects • Engineers

Construction Managers

*Supporting the Arts
in our community
for over 35 years.*

TWO GREAT FALLS PLAZA • AUBURN, MAINE • 04210 • 207 784 2941



YOUR FUTURE STARTS HERE

Earn a high-quality education with one of the lowest tuition rates in New England.

Central Maine Community College offers over 40 degrees and professional development opportunities, all for the lowest tuition in New England. Choose from on-campus, hybrid, or 100% online courses designed to fit into your busy schedule.

We're here for you every step of the way.

FOR CUSTOMIZED TRAINING AND PROFESSIONAL DEVELOPMENT OPPORTUNITIES, VISIT WWW.CMCC.EDU/WORKFORCE

www.cmcc.edu

(207) 755-5273

1250 Turner Street • Auburn

Notice of Non-discrimination: Central Maine Community College is an equal opportunity/affirmative action institution and employer. For more information, please contact Human Resources at 207-755-5396 or humanresources@cmcc.edu.



FISH BONES



JOIN US BEFORE OR AFTER THE SHOW

FISH BONES GRILL

70 LINCOLN ST., LEWISTON, ME

(207) 333-3663 | www.fishbonesgrill.com

We are proud to support the arts in our community.

When you're always on the go, you need a bank that's always there for you. Our suite of personal and business products are designed to make banking easier, no matter what corner of the world you're in.

WE HOPE YOU ENJOY THE SHOW!

MEMBER FDIC



A Division of Maine Community Bank

MECHANICS SAVINGS

AUBURN BRUNSWICK LEWISTON WINDHAM
207-786-5700 mechanicssavings.com

Alphabetical Business Directory

Androscoggin Bank	A-5
Androscoggin Home Healthcare + Hospice	A-7, C-3
Andrucki & King	C-4
Arts & Culture LA	C-12
Austin Associates	C-3
Axis Natural Foods.....	A-8
Bates Theatre & Dance	Inside Front Cover
Bates Arts Collaborative	Inside Back Cover
Berman & Simmons	A-2, C-3
Blais Flowers.....	C-8
Business Listings	C-3
Central Maine Community College	C-9
Central Maine Credit Union.....	C-6
Champoux Group, The	C-4
Computer Place, Inc, The	A-6
Cote Corporation, The	A-7
DaVinci's	A-5
DeBlois Electric	C-6
Dirigo	A-6
Dun Roamin' Tree Farm	A-9
Emerson Chevrolet Buick	A-10
Emerson Toyota	C-4
Fish Bones Grill	C-9
FX Marcotte	A-8
Franco Center, The.....	A-4
Hammond Lumber	A-11
Leary & DeTroy	A-6
Linnell, Choate & Webber	C-3
Lisa Laliberte State Farm Insurance.....	A-10
Maine Family Federal Credit Union	A-11
Maine Music Society	A-3
Maine State Music Theatre	C-2
Maple Way Dental Care	A-12
Mechanics Savings	C-9
Midcoast Symphony Orchestra	A-5
Norman, Hanson & DeTroy, LLC	A-8

continued

Alphabetical Business Directory

Optometric Associates	C-3, C-5
Orphan Annie's Antiques	A-11
Ouellette & Associates	A-9
Pat's Pizza	A-10
Penmor Lithographers	C-7
PERFORMANCE! AD SALES	C-11
Platz Associates	C-8
Rinck Advertising	A-9
Roopers	A-10
Roy I. Snow, Inc	A-2, C-3
Sam's Italian Foods, Inc	C-7
Schooner Estates	Back Cover
Studio 88	A-6
The Pub at Baxter Brewing	C-5
The Public Theatre	A-1
Visbaras Law LLC	C-6
warp + weft	C-7

**Proceeds from advertisements in
PERFORMANCE! provide important
support to the Arts in your community.**

**Contact us to advertise in this playbill
for 2023-24.**

Penny Drumm • 207.333.3386
penny.smartmanagement@gmail.com





17 Ways to HAVE FUN in L/A



- **Androscoggin Historical Society** androhistory.org
- **Auburn Public Library** auburnpubliclibrary.org
- **Bates Dance Festival** batesdancefestival.org
- **Bates College Museum of Art** bates.edu/museum
- **Community Little Theatre** lact.com
- **Franco-American Collection at USM** usm.maine.edu/franco-american-collection
- **Franco-Trail L/A**
- **Franco Center** francocenter.org
- **L/A Arts** laarts.org
- **Lewiston Public Library** lplonline.org
- **Maine Music Society** mainemusicsociety.org
- **Midcoast Symphony Orchestra** midcoastsymphony.org
- **Museum in the Streets trail** museumla.org
- **Museum L-A** museumla.org
- **Olin Concert Series** bates.edu/olin-concert-series
- **The Public Theatre** thepublictheatre.org
- **The Public Art trail** laarts.org



MUSIC



LITERARY ARTS



THEATER



ART+VISUALCULTURE MUSEUM OF ART



DANCE

CELEBRATE THE ARTS AT BATES!

BATES | ARTS
COLLABORATIVE

<http://www.bates.edu/events/arts/>

For more information about the Bates Arts Collaborative, see [Bates.edu/arts](http://www.bates.edu/arts)

[back to Directory Listing](#)

We just might be the

Right Fit
for you too!



*Claudette
Martel*



*Gerry
Martel*

*Schooner Estates
Tenants Since 2020*



Schooner Estates
Senior Living Community

784-2900 • www.SchoonerEstates.com

Supporting the Arts in L/A for more than 25 years

[back to Directory Listing](#)