

*the* **PUBLIC**  
**THEATRE**

**PERFORMANCE! 2023-24**

A Playbill for The Public Theatre and Maine Music Society



### THE THANKSGIVING PLAY

By Larissa FastHorse

Directed by Associate Prof Tim Dugan

Gannett Theater

Nov 2,3,6 at 7:30 pm

Nov 4, 5:00 pm | Nov 5, 2:00 pm

Good intentions. Bad decisions. Great fun. This satirical comedy a troupe of really well-meaning theater artists dream of creating something revolutionary: a culturally sensitive, totally inoffensive Thanksgiving school pageant that finally gives a voice to Native Americans. Finding said Native Americans... isn't so simple. Sending up a whole feast of social issues, this biting funny play roasts everything right, wrong, and woke in America.

### FALL DANCE CONCERT

Schaeffer Theatre

Artistic Director: Asst. Prof Brian J Evans

Dec 2, 5:00 pm | Dec 3, 2:00 pm

Dec 4, 7:30 pm

Featuring Composition Seminar students and capstone works by graduating choreographers.

### THE GRAVEDIGGERS UNION

By Brian James Polak

Directed by Kevin R. Free

Gannett Theater

March 7, 8,11 at 7:30 pm | March 9, 5:00 pm

March 10, 2:00 pm

A colorful collection of gravediggers at a New Hampshire cemetery are suddenly at risk of losing their livelihoods when the Walmart of

cemeteries opens just across the street. Faced with the possible loss of their dysfunctional but comforting existence, they do what most people would do in this circumstance, they try to buy their graveyard by putting on a play to raise money. What could go wrong?

### EL PROXIMO TREN

A senior thesis project

by Miguel Pacheco Gonzalez '24

The Martin Andrucki

Black Box Theater

March 28, 29, April 1, 7:30 pm

March 30, 5:00 pm | March 31, 2:00 pm

Venezuelan Interdisciplinary Arts and Performance major Miguel Pacheco Gonzalez '24 will lead a devised theater project, inspired by Argentinian theater artist Alfredo Rosenbaum, exploring the topic of human migration and the resulting loss and rebirth.

### THE MARCY PLAVIN SPRING DANCE CONCERT

Schaeffer Theatre

Artistic Direction: Asst Prof Tristan Koepke

April 5, 8 at 7:30 pm

April 6, 5:00 pm | April 7, 2:00 pm

Featuring repertory works by contemporary choreographers in collaboration with the Bates Dance Festival.



**Bates** Theater+Dance  
bates.edu

[back to Directory Listing](#)

# THE Maine Music Society

GOLDEN  
*Jubilee*  
50 Years  
OF SONG

2023 - 2024 SEASON SPONSOR  
Hardy Wolf & Downing

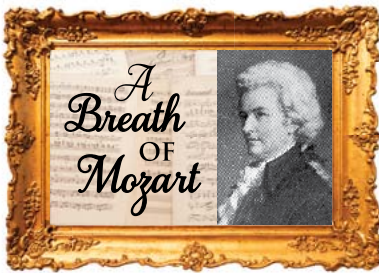
ARTISTIC DIRECTOR  
Dr. Richard Nickerson



Saturday, November 4  
7:00 pm



Sat., Dec. 9 • 7:00 pm  
Sun., Dec. 10 • 2:00 pm



Sat., March 16 • 7:00 pm  
Sun., March 17 • 2:00 pm



Sat., May 11 • 7:00 pm  
Sun., May 12 • 2:00 pm

FRANCO CENTER • LEWISTON

For tickets call 207-333-3386 or visit [mainemusicsociety.org](http://mainemusicsociety.org)

# Jared Morneau

Photography



WEDDINGS - LIVE PERFORMANCE - PORTRAITS

JAREDMORNEAU.COM  
JAREDMORNEAU@GMAIL.COM



## Leary & DeTroy

ATTORNEYS AT LAW

- Workers Compensation
- Criminal Law
- Personal Injury
- Divorce & Custody
- Social Security Disability
- Disability Discrimination

*Justin W. Leary*  
*Benjamin E. DeTroy*

90 Main Street • Auburn  
782-3275  
www.LearyandDeTroy.com  
Free Initial Consultation



*Learn your rights and obtain experienced, effective legal representation*



## Paint Night

**Oct 20 - 29** by Carey Crim

Imagine *Steel Magnolias* with modern day issues, as six women gather for a much-needed girls' night out. This world premiere is a hilarious and heartfelt look at mothers and daughters and the way women support each other in our unpredictable world. A great girls' night out!

## My Witch: The Margaret Hamilton Stories **Nov 10-12**

Jean Tafler portrays Margaret Hamilton in a delightful story about the famous "Wicked Witch of the West" actress who left an indelible mark on all of us.

## A Christmas Carol

**Dec 8 - 10** adapted by C. Schario

Six actors and a fiddler perform the Dickens out of this beloved holiday classic in a way you've never imagined and will never forget! Children 18 and under only \$15!

## Incident at Our Lady of Perpetual Help

**Jan 26 - Feb 4** by Katie Forgette

Get ready for heartwarming laughter and all the polyester you can handle! Whether you grew up Catholic, lived through 1973, or your family resembles the "fun" in dysfunctional, this nostalgic and heartfelt new comedy is for you!

*The best plays and professional actors from Broadway and beyond for a TOP PRICE OF \$30*

## Secret Hour

**Mar 15 - 24** by Jenny Stafford

Married couple Kate and Ben invent a game called "terrible secret hour" where they each confess an unflattering truth and promise to love one another regardless. But is being truthful the same thing as being true to oneself? Entertaining, humorous, poignant, and thoughtful, you'll be talking about this provocative new play all the way home.

## Lunenburg

**May 3 - 12** by Norm Foster

When Iris's husband is unexpectedly killed in a plane crash, her lawyer reveals she has inherited a beautiful home in Lunenburg, Nova Scotia - that she never knew existed! What follows is the perfect combination of mystery, comedy, and romance, as she and her best friend set out from their home in Brunswick, Maine for a laugh-filled, poignant road trip North to unravel the mystery of her husband's secret life.

# RIVERFRONT EVENT SERIES

## 2023-24



**Oct. 7 Runnin' Down a Dream: Tom Petty Tribute**



**Oct. 13 Sweet Baby James: America's #1 James**  
Taylor tribute artist Bill Griese



**Oct. 14 Baked Bean Supper with dessert**



**Oct. 15 Piano Series Duo Mundi George & Guli**



**Oct. 19, 20, 21 Fright Night Walk**



**Oct. 29 Fiddle-icious**



**Nov. 3 The Women Who Risked Everything for Freedom concert with Malinda Haslett**

**Nov. 9, 10, 11 Bricks & Bridges Comedy Fest**

**Nov. 17 Robert Washington: Elvis Tribute**

**Dec. 15, 16 Sights & Sounds of Christmas Show**

**Dec. 17 "Just Us" Entertainers Christmas Show**

**Jan. 26 Piano Men: The Music of Elton & Billy**

**Feb. 3 Welcome to Maine comedy show**

**Feb. 10 Imari & the Sahara Desert Dancers**

**Feb. 17 Josee Vachon**

**March 9 Magic Bus: The Who Tribute**

**April 3 Windham Chamber Singers**

**April 5: Studio Two: The Beatles Tribute**

**July 13: Heather Pierson Trio**

**More events in our online calendar!**



Box office 207-689-2000  
46 Cedar Street, Lewiston  
[www.francocenter.org](http://www.francocenter.org)

# MIDCOAST SYMPHONY ORCHESTRA

## *The Artistry of Music*

Rohan Smith, Music Director



October 28 & 29, 2023

### Soulful Expressions

William Grant Still,  
Ludwig van Beethoven,  
Dmitri Shostakovich

*Anastasia Antonacos,  
Guest Pianist*



January 20 & 21, 2024

### Song & Dance Music from Around the World

Copland, Strauss, Mahler,  
Ginastera, Piazzolla,  
Moncayo, Bernstein

*Philippe Lema,  
Guest Baritone*



March 23 & 24, 2024

### A New Artistic Mélange

Jessie Montgomery,  
Wolfgang Amadeus Mozart,  
Edward Elgar

*Emily Jacobsen,  
Guest Conductor*



May 18 & 19, 2024

### Cityscape, Seascape, Soundscape

Aaron Copland,  
Claude Debussy,  
Ludwig van Beethoven

*Finn Henken, Trumpeter  
Billicio Brito, English*

**Saturdays:** 7:00 p.m. @ Franco Center, Lewiston • **Sundays:** 2:30 p.m. @ Orion Performing Arts Center, Topsham

For more information and tickets, visit our website [MidcoastSymphony.org](http://MidcoastSymphony.org)  
or call our Box Office (207) 481-0790

Proudly  
supporting the  
*arts*  
in our  
community.

**BERMAN &  
SIMMONS**  
TRIAL ATTORNEYS

PORTLAND

LEWISTON

BANGOR

800 244 3576

[bermansimmons.com](http://bermansimmons.com)



# Roy I Snow, Inc.

ELECTRICAL CONTRACTORS

Commercial Residential Industrial

Serving Maine since 1947 RoySnow.com 207.782.3734

## STUDIO 88 MUSIC SCHOOL

SUZUKI TALENT EDUCATION • PIANO AND VIOLIN



Rachel Eastman Feeley  
Martha Gail Feeley

Studio88music@aol.com  
207-344-9145



**THE  
COMPUTER  
PLACE INC.**



- NETWORKS
- SALES
- SECURITY
- REPAIR



"Honest Job, Honest Price"

1485 Lisbon Street  
Lewiston Maine 04240  
info@tcpme.com

t. 207.783.7232  
f. 207.783.7260  
Weekdays 9AM - 5PM  
www.tcpme.com  
www.facebook.com/tcpme



**DIRIGO**

FEDERAL CREDIT UNION

[WWW.DIRIGOFCU.COM](http://WWW.DIRIGOFCU.COM)







Supporting the Arts

## THE CHAMPOUX GROUP

CHAMPOUX • PEOPLES • PINKHAM • ROGERS  
**INSURANCE**

Personal • Business • Bonding...

*...Your Security Is Our Main Concern!*

[www.MaineInsuranceOnline.com](http://www.MaineInsuranceOnline.com)

### OUELLETTE & ASSOCIATES, P.A.

CERTIFIED PUBLIC ACCOUNTANTS

1111 Lisbon Street  
Lewiston, Maine 04240  
(207) 786-0328 • Fax (207) 783-9377  
[www.oacpas.net](http://www.oacpas.net)

- Accounting
- Auditing
- Tax Services
- Bookkeeping Services
- Consulting Services
- Business Valuation



**ANDROSCOGGIN**  
Home Healthcare  
+ Hospice

**Proudly Supporting the Arts**

[Androscoggin.org](http://Androscoggin.org)

# WE INVEST IN YOU

At Great Falls Federal Credit Union we believe that investing in our community means investing in you. We're more than just a financial institution - we're your neighbor, your friend, and your partner in achieving your financial goals.



Discover more about us at  
[www.greatfallsfcu.com](http://www.greatfallsfcu.com)

Visit our three locations at:

34 Bates Street, Lewiston, ME 04240  
760 Minot Avenue, Auburn, ME 04210  
1176 Main Street, Monmouth, ME 04259

## FISH BONES



Join us before the show at  
**FISH BONES GRILL**  
70 LINCOLN ST., LEWISTON, ME  
(207) 333-3663 | [www.fishbonesgrill.com](http://www.fishbonesgrill.com)

Hours: Lunch & Dinner, Tuesday - Friday from 11:30 AM  
Dinner only on Saturday at 4:00 PM

## A Commitment To Excellence



Norman Hanson & DeTroy is a proud supporter of The Maine Music Society, The Public Theatre and the arts community in Maine.

[nhdlaw.com](http://nhdlaw.com)

Attorneys at Law

**NORMAN  
HANSON  
DETROY**

Experienced. Efficient. Effective.

Portland (207) 774-7000

Good Health to you  
and the Planet too!

Serving Maine  
Since 1970

# AXIS NATURAL FOODS



120 Center Street Plaza  
Auburn, Maine 04210  
**(207) 782-3348**  
axisnaturalfoods.com



Natural & Organic Foods • Vitamins • Herbal Products  
Books • Body Care • Organic Produce

**A Maine Pioneer in Organic Farming...**

Earth Day Every Day!  
Organic Wine and Beer • Home Brewing • Gluten Free Items  
Organic Produce • Monthly Specials

*If*

YOU LOOK CLOSELY

*you'll see*

the Arts  
change  
everything.



113 Lisbon Street  
Lewiston, Maine 04240  
(207) 755-9470  
[www.rinckadvertising.com](http://www.rinckadvertising.com)

# THERE WILL BE DRAMA

AND MUSIC AND DANCING  
FOLLOWED BY COCKTAILS  
AND CELEBRATION



*Roopers*  
EST. '92

## AUBURN

301 Main Street, Auburn | 783.9098  
545 Minot Ave, Auburn | 783.2047

## LEWISTON

794 Sabattus Street, Lewiston | 783.6353  
686 Main Street, Lewiston | 344.1200  
1420 Lisbon Street, Lewiston | 333.3095

## OXFORD

980 Main Street, Oxford | 539.6072



132 Lincoln St.  
Lewiston, Maine 04240  
(207) 783-8593

130 Western Ave.  
South Portland, Maine 04106  
(207) 775-5381

[www.fxmarcotte.com](http://www.fxmarcotte.com)

Serving our community since 1938

Online Banking  
Mortgages  
Auto & Personal Loans  
Checking & Savings  
Credit Cards  
And more!



**Maine Family**  
Federal Credit Union



mainefamilyfcu.com

@Mainefamilyfcu

555 Sabattus Street | 831 Minot Avenue  
Lewiston, ME 04240 | Auburn, ME 04210  
(207) 783-2071

**SafeVoices**

Here for those experiencing *domestic abuse, sex trafficking, or sexual exploitation.*



1-800-559-2927

safevoices.org



- ★ Call to talk, safety plan, or ask questions
- ★ Open and available for all
- ★ Free & confidential
- ★ Supportive advocacy
- ★ 24 hours a day, 365 days a year

**Hammond  
Lumber Company**



**Kitchen,  
Bath & Flooring  
Center**

*A Division of Hammond Lumber Company*

- ✓ FRIENDLY AND PROFESSIONAL SALES STAFF
- ✓ COMPLETE SHOWROOMS WITH FUNCTIONING DISPLAYS
- ✓ FREE 3D DESIGN SERVICES WITH PURCHASE OF MATERIALS

**Revitalize the  
Heart of your Home.**

**22 LOCATIONS ACROSS MAINE & NEW HAMPSHIRE**

AUBURN • BANGOR • BAR HARBOR • BELFAST • BELGRADE • BLUE HILL • BOOTHBAY HARBOR • BRUNSWICK • BUCKSPORT  
CALAIS • CAMDEN • CHERRYFIELD • DAMARISCOTTA • ELLSWORTH • FAIRFIELD • FARMINGTON • GREENVILLE  
MACHIAS • PORTLAND • ROCHESTER (NH) • ROCKLAND • SKOWHEGAN

WWW.HAMMONDLUMBER.COM

# Why are our ticket prices so affordable?

---

Your ticket to the Public Theatre is affordable because we want it to be. It's not a mistake, it's a mission.

WE BELIEVE THEATRE IS FOR EVERYONE.

That is why our founders named us THE PUBLIC THEATRE.

With one of the lowest prices for professional theatre in Maine, and probably all of New England, we know that most people in our audience might still see a show if the cost of our tickets were 5 or 10 or even 20 dollars higher, but we also know that higher pricing would leave some people out.

Right now some people in our community just can't afford to see theatre on a regular (or even occasional) basis. Why does that matter? Because the free exchange of ideas between people of different backgrounds is what inspires growth and change and compassion in a community -- and who couldn't use more of those?

If you're someone who would pay more for a play at The Public Theatre, and believe in the value of an inclusive community, please make a contribution. You can even add it to your order the next time you purchase a ticket.

Donations to The Public Theatre are tax deductible and go directly towards helping us create great theatre for everyone.

Thank you for paying it forward!



**Make a secure donation at: [ThePublicTheatre.org/donate](https://ThePublicTheatre.org/donate)**

**Visit the Box Office or call us at 782-2211**

**Mail your donation to:**

**The Public Theatre**

**31 Maple St., Lewiston, ME 04240**



The Public Theatre was founded to bring high quality professional theatre to the people of Maine, at an affordable price. We strive to make our presentations accessible to all, especially those less likely by tradition or inclination to attend live theatre. In choosing our season, we look for plays that speak from the heart; that are life-affirming and uplifting even when the subject matter is dark or painful; that use our language in powerful and provocative ways; that invite the audience to see their world in a new way. Artistic excellence is central to the mission of The Public Theatre.

***The Public Theatre is a member of Theatre Communications Group (TCG), the national organization for the American theatre.***

### **Board of Directors**

Kari Grant-Gagnon .....	President
Jennifer Malloy.....	Vice President/Secretary
Thomas H. Platz .....	Treasurer
Deana Albert	Heidi McCarthy
Peter Kowalski	Christopher Schario

### **Staff**

Christopher Schario .....	Executive/Artistic Director
Janet Mitchko.....	Co-Artistic Director
Carol Ham .....	Business Manager
Jennifer Madigan .....	Asst. Director Marketing/Development
Adam P. Blais .....	Production Mgr. /Artistic Associate
Dmitri Kubbs .....	Technical Director
Elijah Moore.....	Assistant Technical Director
Kathy Lawrence, Reen Robillard .....	Box Office Staff
Brandon Chaloux .....	House Manager
Aaron Louque .....	Concessions Manager

**THE PUBLIC THEATRE** takes pride in recognizing our season sponsors. We seek to develop a partnership with local businesses working together for the enrichment of the Lewiston-Auburn area. The following businesses have joined us in this partnership. If you would like to see your company listed here, please contact us regarding sponsorship opportunities.

## **SEASON UNDERWRITERS**

[Platz Associates](#)  
[Sun Journal](#)

[WOXO 92.7 & WIGY 105.5/95.7](#)  
[The Shubert Foundation](#)

## **CORPORATE SHOW SPONSORS**

[Androscoggin Bank](#)  
[Androscoggin Home Healthcare + Hospice](#)  
[Auburn Manufacturing](#)  
[Bangor Savings Bank](#)  
[Baxter Brewing, Co.](#)  
[Berube's Complete Auto Care](#)  
[Butler Bros.](#)  
[Central Maine Healthcare](#)  
[Cross Insurance](#)

[Dirigo Federal Credit Union](#)  
[Evergreen Subaru](#)  
[I.B.E.W. Local 567](#)  
[LA Metro Magazine](#)  
[Lee Auto Malls](#)  
[Lewiston Pawn Shop](#)  
[NAPA Coastal Auto Parts](#)  
[Norway Savings Bank](#)  
[Twin City Times](#)  
[Warp + Weft](#)

## **EDUCATIONAL UNDERWRITERS**

[Austin Associates, CPA](#)  
[Cross Insurance](#)  
Helen & George Ladd Charitable Corp.

Margaret E. Burnham Charitable Trust  
[Onion Foundation](#)

## **EDUCATION PARTNERS**

[Carrabassett Coffee Company](#)  
[Hilton Garden Inn - Auburn Riverwatch](#)

[Lewiston / Auburn Children's Foundation](#)  
[Liberty Mutual Insurance](#)

## **SEASON SUPPORTERS**

[Auburn-Lewiston YMCA](#)  
[Evergreen Custom Printing](#)  
[Lisa Laliberte State Farm Insurance\\*](#)  
[Maine Lobster Now](#)

[Roy I. Snow, Inc.](#)  
[Sherwin-Williams](#)  
[YWCA of Central Maine](#)

*\*performance sponsors*

## **GRANT SUPPORT**

[Actors' Equity Foundation](#)

[Maine Community Foundation](#)  
[- Maine Theater Fund](#)





# MY WITCH

THE MARGARET HAMILTON STORIES

by John Ahlin

Directed by  
Al D'Andrea +

Stage Manager  
John Ahlin\*

Costumer  
Brittney Cacace-Shortill

Set Design  
Craig Robinson

Additional Costumes  
Davina Smart

Sound Design  
Joseph Blough

Make-up Artist  
Beatrice Sniper

## CAST

Margaret Hamilton ..... Jean Tafler\*

**My Witch : The Margaret Hamilton Stories**  
is produced by Fat Knight Theatre & Snowlion Rep



*\* Member of Actors' Equity Association, the union of professional actors and stage managers in the United States.*

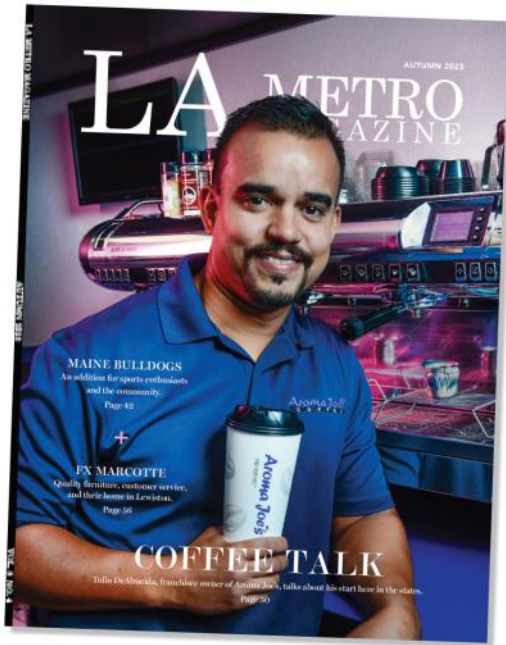


*+ Member of Stage Directors and Choreographers Society, a national theatrical labor union*

My Witch: The Margaret Hamilton Stories is Sponsored by



The proud publisher of two local magazines.



The latest issue of LA Metro Magazine is out!  
Highlighting all things that make our community unique.  
Stop by our office if you haven't grabbed a copy yet.



Subscribe today!



2 Great Falls Plaza, Suite 1B, Auburn | 207-783-7039 | [LAMetroMagazine.com](http://LAMetroMagazine.com)

*My Witch: The Margaret Hamilton Stories* is Sponsored by

NOT SUPPORTING  
LOCAL THEATER  
WOULD BE A TRAGEDY!



LEE AUTO MALLS IS PROUD TO  
SUPPORT THE PUBLIC THEATRE

**LEE**isfor**Me.**

**Lee**AutoMall



**LEE**isfor**Me.**

Find  
Us:



at LeeAutoMalls



**MARGARET HAMILTON** - Hidden within *The Wizard of Oz*, the most iconic American movie ever made, behind the unforgettable Wicked Witch of the West's green makeup, was one of the all-time great character actresses. Unknown to many, Margaret Hamilton enjoyed a long and rich acting career spanning six decades on stage and screen. Born in 1902 in Cleveland, and ultimately settling down in her cherished Maine, Maggie, as she was known, had two great loves: teaching young children and acting. She appeared in hundreds of movies, plays and musicals, and yet the hurdles she faced as a single mother navigating such a mercurial profession is probably the biggest drama of her life. Her movies include: *Another Language*, *People Will Talk*, *City Without Men*, *My Little Chickadee*, *The Adventures of Tom Sawyer*, *Babes in Arms*, *The Ox Bow Incident*, *State of the Union*, *The Red Pony*, *Brewster McCloud* and scores more. Theater was her true love, acting everywhere from Broadway to regional theaters to the Straw Hat summer stock circuit. She did countless radio and television performances, including as Morticia's mother on the *Addams Family*. Maggie famously hawked as the kindly yet curt Cora in coffee commercials and even occasionally revived a one woman show she created for herself. She worked tirelessly for multiple charities, promoting the welfare of children and animals. Margaret Hamilton died on May 16, 1985.





**JEAN TAFLER** (*Margaret Hamilton*): is delighted to be back performing in beautiful Maine! NYC credits: *Three Sisters*, *About Love*, *The Taste of It*, *The Lady's Not for Burning*, *Seeing Stars*, *Romeo & Juliet*, *Taming of the Shrew*, *Philemon*. Regional: *My Witch: The Margaret Hamilton Stories*: Snowlion Rep (world premiere), Bay Street Theater, Bridge Street, Centenary Stage. Her regional work features over 30 productions of Shakespeare plays, 10 seasons with Orlando Shakespeare Theater including *To Kill A Mocking Bird*, *The Merry Wives of Windsor*, *Nicholas Nickleby*, *Titus Andronicus* (Tamora), *Kiss Me Kate* (Lilly Vanessi), and *Macbeth* (Lady Macbeth). Other regional highlights include: *Alabama Story*, *Jane Eyre*, *Hannah*, *Dinner With Friends*, *Follies*, *The Heiress* and many others with The Theatre at Monmouth, Camden Shakespeare Festival, Florida Studio Theater, The Asolo Repertory Theater, Premiere Stages, River Rep, Nebraska Shakespeare Festival, Snowmass /Aspen Rep, Geva Theatre, and Stages Rep. Film: *Bullets Over Broadway*, *Hide & Seek*, *The Deadly Spawn*. Co-founder and managing director of Fat Knight Theatre.

[www.jeantafler.com](http://www.jeantafler.com)

**AL D'ANDREA** (*Director*) co-founded Snowlion Repertory Company in 2009 in Portland, Maine with playwright and partner Margit Ahlin to continue their life's work in the theater. He previously directed *My Witch* for Snowlion Rep in Maine and Bridge Street Theater in New York. Directing credits with Snowlion Rep also include the musicals *The Secret Princess*, *Mesmerized*, *The Sock Who Lost His Mate*, *The Christmas Bride*, *The Freaks Club* and *The Elephant Piece*, as well as the dramatic comedies *Think You Might Be Wrong*, *Omniphobia*, *A Cherry Orchard In Maine*, *The Conquest of the South Pole*, *Anything Helps God Bless*, *A Child's Guide To Innocence*, and *Moral and Political Lessons on 'Wyoming.'* Prior to moving to Maine, Al acted and directed in professional theater, film and television for thirty years in New York, Los Angeles and destinations in-between. He regularly teaches a complete acting curriculum for Snowlion Rep; is the author of several plays, including *Onlyman*, *Anything Helps God Bless*, *Omniphobia* and the book to the musical *Mesmerized*; and is currently writing a contemporary adaptation of the Faust legend entitled *Faust in the Anthropocene* .

**JOHN AHLIN** (*Playwright*) John's work has been seen all over the country. His award-winning play, *Gray Area* received highly acclaimed productions in Los Angeles, Atlanta and Off-Broadway. His most recent play, *ChipandGus*, co-authored with Christopher Patrick Mullen received the highest honors at the New York International Fringe Festival, appeared in the Best of NY and Edinburgh Fringe Encore Series at Soho Playhouse, and has played at Baltimore Center Stage, Proctors Theater, Bridge Street Theatre and many other venues. His short play *Nem* was the winner of The Actors Theatre of Louisville Company short play contest. As an actor John has appeared on Broadway, Off Broadway and the finest regional theaters all around the country. Upcoming playwriting projects include *Charlotte Charke*, and *Mama Sapiens*, about the mother of us all. John is Artistic Director of Fat Knight Theatre, in New York. Fat Knight has produced several award winning and very timely productions. Fat Knight also partners with a variety of non-profits to enhance their great and good works. [www.JohnAhlin.com](http://www.JohnAhlin.com) , [www.FatKnightTheatre.org](http://www.FatKnightTheatre.org)

**JOSEPH BLOUGH** (*Sound*) Joseph has done tech and design work in New York for several legends, including Arthur Miller and a pair of Williams (Tennessee and Vanessa). Maine credits include work with Snowlion Rep and Acorn Productions.

**Fat Knight Theatre** (*co-producer*): An award winning theatre company, originating in New York City, dedicated to creating, discovering and rediscovering great characters in drama, history, literature and modern mythology with a goal to celebrate, inspire and communicate, through theatre and other media, the potential in each of us. [www.fatknighttheatre.org](http://www.fatknighttheatre.org)

**Snowlion Repertory Company** (*co-producer*): has been creating, developing, and producing new and newly imagined theatrical works of cultural, ethical, and spiritual value since 2009 in Portland, Freeport, Boothbay Harbor, and now Lewiston. The company runs PLAYLAB, Maine's premiere play development laboratory, and also offers a unique modular five-part acting curriculum to help students hone their craft. The new *Boothbay Summer Theater* is also a project of Snowlion Rep. [www.snowlionrep.org](http://www.snowlionrep.org)

# Special Thanks

Ham & Helen Meserve  
Margit Ahlin & Snowlion Rep  
Scott Eck & Leadership Masters  
Will Pomerantz  
Bay Street Theater  
Josephine Sanges & John M. Cook  
Jean Tafler for additional script material

## 2023-24 Season Underwriters



Two Great Falls Plaza  
Auburn, ME 04210

207-784-2941  
[platzassociates.com](http://platzassociates.com)

# Sun Journal

Connecting you with your community  
[sunjournal.com](http://sunjournal.com)



The Public Theatre's Assisted  
Listening System  
was funded in part by  
**Dr. & Mrs. Ben Lounsbury**  
and a grant from the  
**Maine Arts Commission**,  
an independent state agency  
supported by the  
National Endowment for the Arts.



We are pleased to offer hearing assistance free of charge to help patrons with hearing difficulties enjoy our productions to their fullest, no matter where they are seated in the Theater. We are using a system which transmits an FM signal to a personal receiver outfitted with lightweight headphones, or neck-loop for hearing aids equipped with a T-coil. Please inquire at the Box Office for more information.



## Subscribe for 2023-24

Three Great Plays for *just \$95!*

- ◇ **FIRST CHOICE** of the **BEST SEATS**
- ◇ **FREE EXCHANGES.** We're flexible, so you can be too. Exchanges up to one hour before show.

*Incident at Our Lady of Perpetual Help* - Jan 26 - Feb 4, 2024

*Secret Hour* - Mar 15 - 24, 2024

*Lunenburg* - May 3 - 12, 2024

See if your Subscription qualifies for a  
**FREE BONUS TICKET** - a \$33 value.  
You can bring a friend to any one of these shows for **FREE**.

Visit Box Office or call 782-2211 FMI or to Subscribe.

A promotional poster for the play "A Christmas Carol". On the left is a portrait of a man in a top hat and glasses. The background is red. The title "A Christmas Carol" is written in large white letters, with "A" and "Carol" being significantly larger than "Christmas". Below the title, it says "adapted by Christopher Schario". At the bottom, it says "Dec 8-10, 2023". A yellow starburst in the bottom right corner contains the text "ALL KIDS \$15".

**A Christmas Carol**  
adapted by  
Christopher Schario  
Dec 8-10, 2023  
ALL KIDS \$15



# INDIVIDUAL DONORS

Contributions are the cornerstone of a not-for-profit theatre. Ticket sales generate less than 40% of our income. We thank the following individuals who have supported The Public Theatre with their generous financial contributions. **If you would like to join our Individual Donors, please call 782-2211.**

## Star (\$1000+)

Anonymous  
Anonymous  
Michael McKenzie & Kari Floren  
Phillip & Susan Morgan  
Sheri Olstein  
Jim & Candace Platz  
Tom Platz & Paula Marcus-Platz\*  
Margo & Jack Simmons  
The Walworth Family Fund\*  
Susan & Robert Weiss\*

## Producer (\$500-\$999)

Androscoggin County Medical Association  
Jerry & Gretchen Davis  
Phyllis Deringis  
Bill & Cynthia DeSoi  
Ken & Melinda Emerson  
Anonymous  
In Memory of Linda C. Gamble  
Eugene Geiger  
Anonymous  
Jim & Julie Jackson  
Brian & Jenna Langlais  
Ben & Bonnie Lounsbury\*  
Elaine Makas  
Barbara Oliver  
William Phillips  
Daniel & Debra Snow

## Director (\$250-\$499)

Bruce W. Allen  
Glenn Anderson  
Anonymous  
Ronald & Donna Bissonnette  
Jeffrey Brown, Susan Brown  
Kitsie & Ned Claxton  
Robert & Kari Gagnon  
Michelle & Normand Groleau  
Ralph & Melinda Harder\*  
Julie Hendrickson  
Michael Jones & Judith Head  
Gary & Lynn Knight  
Mr. & Mrs. William Luening  
Adam Lee & Heidi McCarthy  
Pete Small  
David & Kathleen Stuchiner  
Ann E. Weiss

## Leading Actor (\$100-\$249)

Maureen & Michael Aube  
Gene & Ellen Benner  
Carmen Bennett

\* Denotes Theatre Founder

Fred & Janet Bishop  
Linda Bishop  
David Blocher & Helen Warren  
John & Doris Bonneau  
Brenda Boothby  
Jon Bradshaw  
M. Elaine Briggs  
Carl & Joyce Bucciantini  
Katy Cavanaugh  
Janice Parvin  
Deborah Chandler  
Rae Clark-McGrath  
The Condit Family  
Holly Cooney  
Ellen Crawford & Mike Genovese  
Althea Croxford & Phil Blake  
Marian Dalton  
Carol S. Davis  
Martha Deschaines  
Richard & Barbara Diamond  
Art Dingley, Tami Cooper  
Grace Drown  
Josephine & Stephanie Dupal  
Anonymous  
Alice Faucher  
Lynda & Dick Giard  
George & Martha Gilmore  
Kathy Gleason  
Bruce & Elizabeth Grant  
Robert Grieshaber  
Anonymous  
Greg & Betsy Hanscom  
Fred & Heather Hersom  
Connie Hitchcock  
Barbara Howard & Nick Poulton  
Wendi & John Hubbard  
Penelope Jessop & David Chittim  
Richard & Jackie Jordan  
Mike & Janet Joseph  
James Kearney & Carol Rice  
Lee & Ingrid Kendall  
Katharina Keoughan  
Barbara Keppel  
Joseph Klapatch in Memory of Michael Jinbo  
Robert & Nancy Kleckner  
Paul Knight  
Ray & Sue Lagueux  
Richard & Joan Legendre  
Madeleine Love & Jonathan Mitschele  
Patricia Mador  
Virginia Marczak  
Drew Masterman  
Heather & Bill McCarthy

Andrew & Joanne McKee  
Steve & Nancy Menneally  
Christina Moylan & Thomas Knowlton  
Jeff & JoAnn Newell  
Dennis & Janet O'Neil  
David & Joel Ann Oshansky  
Joyce A. Polyniak  
Douglas Rees  
Luanne & Rex Rhoades  
Martha Richardson  
Carolyn Robertson  
Craig & Carol Robinson  
Bruce Rood  
John & Susan Saunders  
Patricia & Stephen Sawyer  
Judy Staicer, Robert Schwartz  
J. Gregory Shea  
Alison Smith  
Mary Snell & Irwin Novak  
Sharon & David Staszak  
Jeff & Sue Sturgis  
David + Holly Sysko  
Stan & Cathy Tetenman  
Bette J. Swett-Thibeault Friend  
Woody & Susan Trask  
Adriann M. Tucker  
Sue Tymoczko  
Richard & Lois Wagner  
Judy Lloyd & David Wallace  
Anne Weatherbee  
Bridget & Richard Whiting  
Liz Wilson  
David Zellinger

## Stage Manager (\$50-\$99)

Marsya Ancker  
Tony & Marcia Augello  
Paul E. Baribault  
Nancy Orr & Edward Barrett  
Colleen Bennett  
Jackie Bernier  
Rev. Dr. Judith Blanchard  
Claire Breton  
Diane & Eugene Brogan  
Anonymous  
Anthony Butterall  
Anonymous  
Carmen Caron  
Barbara Connell  
Denise Courtemanche  
James Crary & Pamela Gross  
Susan Craves  
Suzanne Crowell  
Phillip Davis

Carolyn Downing  
 Penny Drumm  
 Jane & David Erickson  
 Patricia Faunce  
 Judith Fergin  
 Paul & Cyndi Fortier  
 Barbara Fowle  
 William Fuller  
 Anonymous  
 Patricia Gautier  
 Donald & Laural Grant  
 Jody Harris  
 Mary E. Houlihan  
 Janet Isbell  
 Stephen B. Jacobs  
 Anonymous  
 Joel Leffert  
 Natalie Rose Liberace  
 Mary & Vincent Louque  
 Theda Lyden  
 Connie Machan  
 Diane Maheux  
 Gerry & Claudette Martel  
 Pamela & Michael Matzinger  
 Joanne McDermott  
 Sheila McGarr  
 Linda D. McPhee  
 Nancy Morris  
 Joanne & Earl Morse  
 David Newer  
 Helene & Lewis Perry  
 Gil Peterson  
 Debra Phillips  
 Edouard Plourde  
 Grace & Kenneth Reed  
 Clayton (Mac) Richardson  
 Quimby & Mitzi Robinson  
 Merrill Rollins  
 Millard Rose  
 Suzanne R. Roy  
 David Scribner

Greg Sharpe  
 Karen Shumac & Larry  
 Whittington  
 Maggie Smith  
 Patricia Snyder  
 Kristin G. Sweeney  
 Wendy & Marc Tardif  
 Anonymous  
 Judith Webber  
 Bethany & Paul Whalon  
 Diane Whitmore  
 Kathy Wyatt

**Supporting Actor** (\$20-\$49)

Bruce & Pam Bell  
 Frank Broadbent  
 Aaron & Ellen Burke  
 Kathi Burke  
 Presley, Kaylin, Gavin  
 Catherine & Kevin Carey  
 Jacqueline Caron  
 Sandra Chamberlain  
 Robert & Tookie Clifford  
 Alvin Da-Costa  
 Judy D'Amour  
 Patricia Davis  
 Johannah DeGrandpre  
 Abigail Douglas  
 Diana Dowd  
 Michael Ferris  
 Christina Finneran & Paul First  
 Ruth Fiske  
 Anna & Ed Flotten  
 Denis & Pauline Fortier  
 Mary Fortunato  
 Susan Glines  
 Susan & Kenneth Gordon  
 Evelyn Greenlaw  
 Mrs. Gisele Guerrette  
 Mr. & Mrs. Rollie Heckethorn

Linda A. Hill  
 Nan Hughes & Norman Rich  
 Digger & Nancy Jones  
 Verdel Jones  
 Susan Kane  
 Rodney C. Kuhl  
 Larry & Carol LaBossiere  
 Mary & Dick LaFontaine  
 Jerryanne LaPerrière  
 John Leddy  
 Michael Levey  
 Susan Martin  
 Betty McCall  
 Shawn McDonnell  
 Roland Morin & Laura Cote  
 Joan Pedersen  
 Richard & Rose Pelletier  
 Cecile Potvin  
 Carl Prouty  
 Paul & Sharron Raczynski  
 Emily Reese  
 Lucille Rioux  
 Barbara & Michael Shapiro  
 Sue & Ken Spalding  
 Cynthia Stengel  
 Linda Stone  
 Elise Straus-Bowers  
 Richard & Jackie Strong  
 Lisa Therrien  
 Carol & Steve Thomas  
 Nancy Tremblay  
 Cheryl Van Messel & Charles Bross  
 Joseph Varuolo  
 Melissa & Gary Veilleux  
 Shawna Wells  
 Patricia A. West  
 Pearle Williamson  
 John & Betty Woodbury  
 Cindy Wu

[Donate Online](#)

This list reflects donations of \$20 or more received through October 24, 2023

**2024 Raffle Fundraiser**  
**WHO COULDN'T USE A LITTLE CASH?**

**YOU COULD WIN**  
**\$1,500!**

Only 400 tickets sold  
 \$25 each

Drawing will take place February 9, 2024.



# Educational Programming

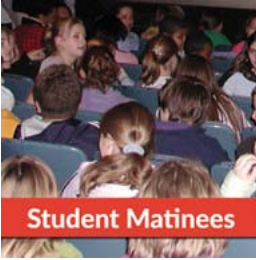


## DID YOU KNOW?

**Our Educational Programming has served over 113,000 students, educators and families, including over 100,000 \$5 Student Matinee tickets?**

The Public Theatre's Education Programs provide children with the opportunity to experience live professional theatre, serve as an educational resource for Maine schools, enrich the lives of young people, and encourage our next generation's participation in the cultural life of their community.

**This programming is made possible through the generous support of our Education Sponsors and you, our patrons.**



Each Student Matinee features \$5 tickets and a post-show talkback with the actors and director. Student rates are also available for our public performances. To help Educators make the most of the experience, free study guides are available prior to attending and pre or post-show workshops about the production are available upon request. This experience cultivates the habit of participating in the cultural life of their community and gives them an experience that will expand their world in new and exciting ways.



As theatre professionals we have taken our skills and created FREE live and virtual workshops that can easily fit into most curricula. These workshops were originally created to help support teachers and the Arts in schools during the pandemic and presented virtually to classes as far away as Monhegan! They were so successful they are now a regular part of our programming! Serving Grades 3-12.



Classes choose a story from the public domain and illustrate it. We create a high quality video story we share with libraries, our patrons and the general public. The Art of Storytelling can be done with any grade at any level of artistry. You can see the finished videos at [youtube.com/ThePublicTheatre](https://youtube.com/ThePublicTheatre)

**Read more about our Education Programs:  
[ThePublicTheatre.org/student-matinees](https://ThePublicTheatre.org/student-matinees)  
or call 782-2211**



## Let us help you write **your** next chapter.



At Norway Savings Asset Management Group, it's not necessarily the size of your nest egg we care about — it's the story behind it. Your planning decisions are a reflection of your values and your future. They're about the choices you've made to get here, and your vision for what comes next. We take the responsibility of protecting your financial future incredibly seriously. We make sure your story lives on.

INVESTMENT MANAGEMENT • TRUST SERVICES  
FINANCIAL ADVICE • ESTATE PLANNING

**207.482.7920** | [NorwaySavings.bank](https://www.NorwaySavings.bank)

Not FDIC Insured • No Bank Guarantee • May Lose Value

 **Norway  
Savings**

ASSET MANAGEMENT GROUP

For the **life** you choose.

## Business Listings

**Androscoggin Home Healthcare + Hospice**.....207-777-7740  
15 Strawberry Ave., Lewiston, ME 04240  
www.androscoggin.com

**Austin Associates, P.A.**.....207-783-9111  
Certified Public Accountants  
Auburn • Norway • Skowhegan ..... www.austinpa.com

**Berman & Simmons, P.A.** .....207-784-3576  
Personal Injury Trial Attorneys  
Portland • Lewiston • Bangor  
bermansimmons.com

**Norman, Hanson & DeTroy, LLC** .....207-774-7000  
Attorneys-at-Law  
Two Canal Plaza, Portland, Maine 04101  
nhdlaw.com

**Optometric Associates**.....207-784-3564  
Home of Healthier Eyes  
168 East Avenue, Lewiston, Maine 04240  
www.optometricassociates.com

**Roy I. Snow, Inc.** .....207-782-3734  
Electrical Contractor  
11 Library Avenue, Auburn, Maine 04210  
www.roysnow.com

**EMERSON**  
   
**CHEVROLET BUICK®**  
**946 Center St. • Auburn**  
emersonchevy.com  
**(207) 784-3503 • (800) 696-0766**

---

**Lisa Laliberte, Agent**  
224 Russell Street  
Lewiston, ME 04240  
Bus: 207-783-3332  
lisa.laliberte.gqph@statefarm.com



# MAINE STATE MUSIC THEATRE 2024 SEASON!

Rodgers & Hammerstein's  
**SOUTH PACIFIC**  
JUNE 5 - 22

**FUNNY GIRL**  
THE MUSICAL  
JUNE 26 - JULY 13

Irving Berlin's  
**WHITE CHRISTMAS**  
THE MUSICAL  
JULY 17 - AUGUST 3

**Beautiful**  
The Carole King Musical  
AUGUST 7 - 24

## CONCERT SERIES

<p><b>THE WAY WE WERE</b></p>	<p><b>WONDERFUL CRAZY NIGHT</b></p>	<p><b>GREAT BALLS OF FIRE</b></p>
<p>THE SONGS OF CELINE &amp; BARBRA JUNE 16 &amp; 17</p>	<p>THE NEW ELTON JOHN TRIBUTE JULY 7 &amp; 8</p>	<p>THE LEGENDARY MUSIC OF JERRY LEE LEWIS JULY 28 &amp; 29</p>

## FAMILY THEATRE

<p>Robin and Clark's <b>Beauty and the BEAST</b> JUNE 10</p>	<p>The <b>Story of the Nutcracker</b> JULY 22</p>	<p>The <b>Wizard of OZ</b> Youth Edition AUGUST 12</p>
--	---	--

**MSMT**  
MAINE STATE MUSIC THEATRE

Bringing Broadway to Brunswick

Tickets: [msmt.org](http://msmt.org)  
207.725.8760

**Optometric** Home of Healthier Eyes  
**Associates**

**Douglas J. Henry, O.D., Ph.D.**

Diplomate, American Board of Optometry

**Stephen L. Ebersole, O.D.**

Diplomate, American Board of Optometry

**Abigail R. Carr, O.D.**

- Comprehensive Eye Exams
- Over **1000** Fashion Frames In Stock with On-Site Lab for Fast Service
- Contact Lens Specialists
- **New** Dry Eye Center
- Eye Disease Treatment
- Laser Surgery Co-Management

Ask us about  
**Lipiflow Dry  
Eye Therapy**



**Prescription and  
Non-Prescription  
Sunglasses**

Serving L/A for  
more than 60 Years

784-3564

168 East Ave., Lewiston

[www.optometricassociates.com](http://www.optometricassociates.com)

E-mail: [respond@optometricassociates.com](mailto:respond@optometricassociates.com)



Medicare, Most Insurance  
& CareCredit™ Accepted

E-mail: [respond@optometricassociates.com](mailto:respond@optometricassociates.com)

**BAXTER®**

BREWING CO.

**\$5 OFF  
YOUR BILL**

Present this coupon with your  
**Performance! Playbill** ticket  
for \$5 off your next meal at  
**The Pub at Baxter!**

CAN'T BE COMBINED WITH ANY OTHER OFFER. NO CASH VALUE. CAN ONLY BE APPLIED TO DINE-IN FOOD AND BEVERAGE PURCHASE. NOT VALID FOR MERCHANDISE OR TO-GO BEER. LIMIT ONE PER CHECK.



# DeBlois Electric, Inc.

ELECTRICAL CONTRACTOR • DESIGN BUILD

***Building Lasting Relationships Since 1967***

- Service • Small Projects • Generators • Smart Homes

www.debloiselectric.com  
Lewiston, ME • 207-783-6512



Bank Where You Belong

1000 Lisbon Street  
Lewiston, ME 04240

207-783-1475

[www.centralmainecu.com](http://www.centralmainecu.com)



990 Center St. Auburn, ME  
[emersontoyota.com](http://emersontoyota.com) (207) 784-1348

*“Where You Buy Is As Important  
As What You Buy”*



*"To enter a theater for a performance is to be inducted into a magical space, to be ushered into the sacred arena of the imagination"*

*-- Simon Callow*



Visbaras Law  
&  
Excalibur Title  
*Company of Maine*  
— LLC —

*Providing quality legal services since 1986 in real estate closings, titles and title insurance, zoning and land use, business start-ups, residential and commercial property sales, and individual wills and trusts.*

K. Alexander Visbaras, Esq.  
195 Center Street  
Auburn, Maine 04210

207-376-3126  
207-376-3127  
kalex@visbaras.com

**PENMOR**  
LITHOGRAPHERS

MARKET YOUR BUSINESS  
with **HIGH-IMPACT** PRINT

Commercial Offset Printing  
Digital Small Run Printing  
Wide Format Signage Printing  
Mailing and Fulfillment Services

8 Lexington Street • P.O. Box 2003 • Lewiston, ME 04241-2003  
Tel: 207.784.1341 • 1.800.339.1341 • Fax: 207.784.2892  
www.penmor.com

Courtesy, Quality and Service . . .  
A Winning Combination  
Since 1939



*Employee Owned*

Ruburn • Lewiston • Augusta  
Dixfield • Lisbon Falls  
Topsham • Brunswick • Freeport

*Eat In, Carry Out, Event Catering*

[samsitalian.com](http://samsitalian.com)



**Blais**  
Flowers

GIFT SHOP & GREEN HOUSE

539 Webster Street  
Lewiston, Maine 04240  
Phone: (207) 783-8566  
www.blaisflowers.com

*Your florist  
for every occasion.*



*Supporting the Arts for over 40 years*

**PLATZ ASSOCIATES**  
Since 1980 Architects • Engineers  
Construction Managers

TWO GREAT FALLS PLAZA • AUBURN, MAINE • 04210 • 207 784 2041



# YOUR FUTURE STARTS HERE

**Earn a high-quality education with one of the lowest tuition rates in New England.**

Central Maine Community College offers over 40 degrees and professional development opportunities, all for the lowest tuition in New England. Choose from on-campus, hybrid, or 100% online courses designed to fit into your busy schedule.

We're here for you every step of the way.

FOR CUSTOMIZED TRAINING AND PROFESSIONAL DEVELOPMENT OPPORTUNITIES, VISIT [WWW.CMCC.EDU/WORKFORCE](http://WWW.CMCC.EDU/WORKFORCE)

[www.cmcc.edu](http://www.cmcc.edu)  
(207) 755-5273  
1250 Turner Street • Auburn

Notice of Non-discrimination: Central Maine Community College is an equal opportunity/affirmative action institution and employer. For more information, please contact Human Resources at 207-755-5396 or [humanresources@cmcc.edu](mailto:humanresources@cmcc.edu).



*~FOOD & SPIRITS~*

Serving the L/A area since 1985!

**Full-Service Family Restaurant**  
Dining Room and Take-Out Hours  
11:00 AM - 9:00 PM Daily

Hot and Cold Sandwiches • Pizza  
Pasta • Desserts • Lunch • Dinner  
Full-service Bar • Maine Micro-Brews  
Gift Certificates

85 Center Street • Auburn, Maine  
Call us at 207-784-8221  
[patsauburn.com](http://patsauburn.com)



## We are proud to support the arts in our community.

As a local community bank we are committed to being a vital part of the communities we serve. We are committed to giving our customers the access and convenience they expect from a modern bank – without sacrificing the personal touch that has always defined us.

**We're Maine Community Bank – on your corner and in your corner.**  
Contact us today!



**MAINE**  
COMMUNITY BANK

207-786-5705

[mainecb.com](http://mainecb.com)

## Alphabetical Business Directory

Androscoggin Home Healthcare + Hospice .....	A-7, C-3
Arts & Culture LA .....	C-12
Austin Associates .....	C-3
Axis Natural Foods.....	A-9
Bates   Theatre & Dance .....	Inside Front Cover
Bates   Arts Collaborative .....	Inside Back Cover
Baxter Brewing & The Pub .....	C-5
Berman & Simmons .....	A-5, C-3
Blais Flowers.....	C-8
Business Listings .....	C-3
Central Maine Community College .....	C-9
Central Maine Credit Union.....	C-6
Champoux Group, The .....	A-7
Computer Place, Inc, The .....	A-6
DaVinci's .....	A-10
DeBlois Electric .....	C-6
Dirigo Federal Credit Union.....	A-6
Emerson Chevrolet Buick .....	C-3
Emerson Toyota .....	C-6
Fish Bones Grill .....	A-8
FX Marcotte .....	A-10
Franco Center, The.....	A-4
Great Falls Federal Credit Union.....	A-8
Hammond Lumber .....	A-11
Jared Morneau Photography.....	A-2
Leary & DeTroy .....	A-2
Lisa Laliberte State Farm Insurance.....	C-3
Maine Community Bank .....	C-9
Maine Family Federal Credit Union.....	A-11
Maine Music Society .....	A-1
Maine State Music Theatre .....	C-4
Midcoast Symphony Orchestra .....	A-5
Norman, Hanson & DeTroy, LLC .....	A-8, C-3
Norway Savings Bank.....	C-2
Optometric Associates .....	C-3, C-5
Ouellette & Associates .....	A-7

*continued*

## Alphabetical Business Directory

Pat's Pizza .....	C-9
Penmor Lithographers .....	C-7
PERFORMANCE! AD SALES .....	C-11
Platz Associates .....	C-8
Public Theatre, The .....	A-3
Rinck Advertising .....	A-9
Roopers .....	A-10
Roy I. Snow, Inc .....	A-6, C-3
Safe Voices .....	A-11
Sam's Italian Foods, Inc .....	C-7
Schooner Estates .....	Back Cover
Studio 88 .....	A-6
Visbaras Law LLC .....	C-7

**Proceeds from advertisements in  
PERFORMANCE! provide important  
support to the Arts in your community.**

**Contact us to advertise in this playbill  
for 2024-25.**

Penny Drumm • 207.333.3386  
penny.smartmanagement@gmail.com





Bates Dance Festival

# 17 Ways to HAVE FUN in L/A



Community Little Theatre

- **Androscoggin Historical Society** [androhistory.org](http://androhistory.org)
- **Auburn Public Library** [auburnpubliclibrary.org](http://auburnpubliclibrary.org)
- **Bates Dance Festival** [batesdancefestival.org](http://batesdancefestival.org)
- **Bates College Museum of Art** [bates.edu/museum](http://bates.edu/museum)
- **Community Little Theatre** [laclt.com](http://laclt.com)
- **Franco-American Collection at USM** [usm.maine.edu/franco-american-collection](http://usm.maine.edu/franco-american-collection)
- **Franco-Trail L/A**
- **Franco Center** [francocenter.org](http://francocenter.org)
- **L/A Arts** [laarts.org](http://laarts.org)
- **Lewiston Public Library** [lplonline.org](http://lplonline.org)
- **Maine Music Society** [mainemusicsociety.org](http://mainemusicsociety.org)
- **Midcoast Symphony Orchestra** [midcoastsymphony.org](http://midcoastsymphony.org)
- **Museum in the Streets trail** [museumla.org](http://museumla.org)
- **Maine MILL** [mainemill.org](http://mainemill.org)
- **Olin Concert Series** [bates.edu/olin-concert-series](http://bates.edu/olin-concert-series)
- **The Public Theatre** [thepublictheatre.org](http://thepublictheatre.org)
- **The Public Art trail** [laarts.org](http://laarts.org)



The Public Theatre

# MUSIC



# LITERARY ARTS

# THEATER



# ART+VISUALCULTURE MUSEUM OF ART



# DANCE



## CELEBRATE THE ARTS AT BATES!



### BATES | ARTS COLLABORATIVE

<http://www.bates.edu/events/arts/>

For more information about the  
Bates Arts Collaborative, see [Bates.edu/arts](http://Bates.edu/arts)

[back to Directory Listing](#)

A SERENADE OF JOYFUL LIVING



**Schooner Estates**  
Senior Living Community



*Ruth Carpenter*  
*Schooner Estates*  
*Tenant Since 2021*

***Live your life in harmony at Schooner!***

**784-2900 • [SchoonerEstates.com](http://SchoonerEstates.com)**

*Supporting the Arts in L/A for more than 25 years*

[back to Directory Listing](#)