

the **PUBLIC**
THEATRE

PERFORMANCE! 2023-24

A Playbill for The Public Theatre and Maine Music Society



THE THANKSGIVING PLAY

By Larissa FastHorse

Directed by Associate Prof Tim Dugan

Gannett Theater

Nov 2,3,6 at 7:30 pm

Nov 4, 5:00 pm | Nov 5, 2:00 pm

Good intentions. Bad decisions. Great fun. This satirical comedy a troupe of really well-meaning theater artists dream of creating something revolutionary: a culturally sensitive, totally inoffensive Thanksgiving school pageant that finally gives a voice to Native Americans. Finding said Native Americans... isn't so simple. Sending up a whole feast of social issues, this biting funny play roasts everything right, wrong, and woke in America.

FALL DANCE CONCERT

Schaeffer Theatre

Artistic Director: Asst. Prof Brian J Evans

Dec 2, 5:00 pm | Dec 3, 2:00 pm

Dec 4, 7:30 pm

Featuring Composition Seminar students and capstone works by graduating choreographers.

THE GRAVEDIGGERS UNION

By Brian James Polak

Directed by Kevin R. Free

Gannett Theater

March 7, 8,11 at 7:30 pm | March 9, 5:00 pm

March 10, 2:00 pm

A colorful collection of gravediggers at a New Hampshire cemetery are suddenly at risk of losing their livelihoods when the Walmart of

cemeteries opens just across the street. Faced with the possible loss of their dysfunctional but comforting existence, they do what most people would do in this circumstance, they try to buy their graveyard by putting on a play to raise money. What could go wrong?

EL PROXIMO TREN

A senior thesis project

by Miguel Pacheco Gonzalez '24

The Martin Andrucki

Black Box Theater

March 28, 29, April 1, 7:30 pm

March 30, 5:00 pm | March 31, 2:00 pm

Venezuelan Interdisciplinary Arts and Performance major Miguel Pacheco Gonzalez '24 will lead a devised theater project, inspired by Argentinian theater artist Alfredo Rosenbaum, exploring the topic of human migration and the resulting loss and rebirth.

THE MARCY PLAVIN SPRING DANCE CONCERT

Schaeffer Theatre

Artistic Direction: Asst Prof Tristan Koepke

April 5, 8 at 7:30 pm

April 6, 5:00 pm | April 7, 2:00 pm

Featuring repertory works by contemporary choreographers in collaboration with the Bates Dance Festival.



Bates Theater+Dance
bates.edu

[back to Directory Listing](#)

THE Maine Music Society

GOLDEN
Jubilee
50 Years
OF SONG

2023 - 2024 SEASON SPONSOR
Hardy Wolf & Downing

ARTISTIC DIRECTOR
Dr. Richard Nickerson



Saturday, November 4
7:00 pm



Sat., Dec. 9 • 7:00 pm
Sun., Dec. 10 • 2:00 pm



Sat., March 16 • 7:00 pm
Sun., March 17 • 2:00 pm



Sat., May 11 • 7:00 pm
Sun., May 12 • 2:00 pm

FRANCO CENTER • LEWISTON

For tickets call 207-333-3386 or visit mainemusicsociety.org

Jared Morneau

Photography



WEDDINGS - LIVE PERFORMANCE - PORTRAITS

JAREDMORNEAU.COM
JAREDMORNEAU@GMAIL.COM



Leary & DeTroy

ATTORNEYS AT LAW

- Workers Compensation
- Criminal Law
- Personal Injury
- Divorce & Custody
- Social Security Disability
- Disability Discrimination

Justin W. Leary
Benjamin E. DeTroy

90 Main Street • Auburn
782-3275
www.LearyandDeTroy.com
Free Initial Consultation



Learn your rights and obtain experienced, effective legal representation



Paint Night

Oct 20 - 29 by Carey Crim

Imagine *Steel Magnolias* with modern day issues, as six women gather for a much-needed girls' night out. This world premiere is a hilarious and heartfelt look at mothers and daughters and the way women support each other in our unpredictable world. A great girls' night out!

My Witch: The Margaret Hamilton Stories **Nov 10-12**

Jean Tafler portrays Margaret Hamilton in a delightful story about the famous "Wicked Witch of the West" actress who left an indelible mark on all of us.

A Christmas Carol

Dec 8 - 10 adapted by C. Schario

Six actors and a fiddler perform the Dickens out of this beloved holiday classic in a way you've never imagined and will never forget! Children 18 and under only \$15!

Incident at Our Lady of Perpetual Help

Jan 26 - Feb 4 by Katie Forgette

Get ready for heartwarming laughter and all the polyester you can handle! Whether you grew up Catholic, lived through 1973, or your family resembles the "fun" in dysfunctional, this nostalgic and heartfelt new comedy is for you!

The best plays and professional actors from Broadway and beyond for a TOP PRICE OF \$30

Secret Hour

Mar 15 - 24 by Jenny Stafford

Married couple Kate and Ben invent a game called "terrible secret hour" where they each confess an unflattering truth and promise to love one another regardless. But is being truthful the same thing as being true to oneself? Entertaining, humorous, poignant, and thoughtful, you'll be talking about this provocative new play all the way home.

Lunenburg

May 3 - 12 by Norm Foster

When Iris's husband is unexpectedly killed in a plane crash, her lawyer reveals she has inherited a beautiful home in Lunenburg, Nova Scotia - that she never knew existed! What follows is the perfect combination of mystery, comedy, and romance, as she and her best friend set out from their home in Brunswick, Maine for a laugh-filled, poignant road trip North to unravel the mystery of her husband's secret life.

RIVERFRONT EVENT SERIES

2023-24



Oct. 7 Runnin' Down a Dream: Tom Petty Tribute



Oct. 13 Sweet Baby James: America's #1 James
Taylor tribute artist Bill Griese



Oct. 14 Baked Bean Supper with dessert



Oct. 15 Piano Series Duo Mundi George & Guli



Oct. 19, 20, 21 Fright Night Walk



Oct. 29 Fiddle-icious



Nov. 3 The Women Who Risked Everything for Freedom concert with Malinda Haslett

Nov. 9, 10, 11 Bricks & Bridges Comedy Fest

Nov. 17 Robert Washington: Elvis Tribute

Dec. 15, 16 Sights & Sounds of Christmas Show

Dec. 17 "Just Us" Entertainers Christmas Show

Jan. 26 Piano Men: The Music of Elton & Billy

Feb. 3 Welcome to Maine comedy show

Feb. 10 Imari & the Sahara Desert Dancers

Feb. 17 Josee Vachon

March 9 Magic Bus: The Who Tribute

April 3 Windham Chamber Singers

April 5: Studio Two: The Beatles Tribute

July 13: Heather Pierson Trio

More events in our online calendar!



Box office 207-689-2000
46 Cedar Street, Lewiston
www.francocenter.org

MIDCOAST SYMPHONY ORCHESTRA

The Artistry of Music

Rohan Smith, Music Director



October 28 & 29, 2023

Soulful Expressions

William Grant Still,
Ludwig van Beethoven,
Dmitri Shostakovich

*Anastasia Antonacos,
Guest Pianist*



January 20 & 21, 2024

Song & Dance Music from Around the World

Copland, Strauss, Mahler,
Ginastera, Piazzolla,
Moncayo, Bernstein

*Philippe Lema,
Guest Baritone*



March 23 & 24, 2024

A New Artistic Mélange

Jessie Montgomery,
Wolfgang Amadeus Mozart,
Edward Elgar

*Emily Jacobsen,
Guest Conductor*



May 18 & 19, 2024

Cityscape, Seascape, Soundscape

Aaron Copland,
Claude Debussy,
Ludwig van Beethoven

*Finn Henken, Trumpeter
Billie Jo Brito, English*

Saturdays: 7:00 p.m. @ Franco Center, Lewiston • **Sundays:** 2:30 p.m. @ Orion Performing Arts Center, Topsham

For more information and tickets, visit our website MidcoastSymphony.org
or call our Box Office (207) 481-0790

Proudly
supporting the
arts
in our
community.

**BERMAN &
SIMMONS**
TRIAL ATTORNEYS

PORTLAND

LEWISTON

BANGOR

800 244 3576

bermansimmons.com



Roy I Snow, Inc.

ELECTRICAL CONTRACTORS

Commercial Residential Industrial

Serving Maine since 1947 RoySnow.com 207.782.3734

STUDIO 88 MUSIC SCHOOL

SUZUKI TALENT EDUCATION • PIANO AND VIOLIN



Rachel Eastman Feeley
Martha Gail Feeley

Studio88music@aol.com
207-344-9145



- NETWORKS
- SALES
- SECURITY
- REPAIR



"Honest Job, Honest Price"

1485 Lisbon Street
Lewiston Maine 04240
info@tcpme.com

t. 207.783.7232
f. 207.783.7260
Weekdays 9AM - 5PM
www.tcpme.com
www.facebook.com/tcpme



WWW.DIRIGOFUCU.COM





Supporting the Arts

THE CHAMPOUX GROUP

CHAMPOUX • PEOPLES • PINKHAM • ROGERS
INSURANCE

Personal • Business • Bonding...

...Your Security Is Our Main Concern!

www.MaineInsuranceOnline.com

OUELLETTE & ASSOCIATES, P.A.

CERTIFIED PUBLIC ACCOUNTANTS

1111 Lisbon Street
Lewiston, Maine 04240
(207) 786-0328 • Fax (207) 783-9377
www.oacpas.net

- Accounting
- Auditing
- Tax Services
- Bookkeeping Services
- Consulting Services
- Business Valuation



ANDROSCOGGIN
Home Healthcare
+ Hospice

Proudly Supporting the Arts

Androscoggin.org

WE INVEST IN YOU

At Great Falls Federal Credit Union we believe that investing in our community means investing in you. We're more than just a financial institution - we're your neighbor, your friend, and your partner in achieving your financial goals.



Discover more about us at
www.greatfallsfcu.com

Visit our three locations at:

34 Bates Street, Lewiston, ME 04240
760 Minot Avenue, Auburn, ME 04210
1176 Main Street, Monmouth, ME 04259

FISH BONES



Join us before the show at
FISH BONES GRILL

70 LINCOLN ST., LEWISTON, ME

(207) 333-3663 | www.fishbonesgrill.com

Hours: Lunch & Dinner, Tuesday - Friday from 11:30 AM

Dinner only on Saturday at 4:00 PM

A Commitment To Excellence



Norman Hanson & DeTroy is a proud supporter of The Maine Music Society, The Public Theatre and the arts community in Maine.

nhdlaw.com

Attorneys at Law

**NORMAN
HANSON
DETROY**

Experienced. Efficient. Effective.

Portland (207) 774-7000

Good Health to you
and the Planet too!

Serving Maine
Since 1970

AXIS NATURAL FOODS



120 Center Street Plaza
Auburn, Maine 04210
(207) 782-3348
axisnaturalfoods.com



Natural & Organic Foods • Vitamins • Herbal Products
Books • Body Care • Organic Produce

A Maine Pioneer in Organic Farming...

Earth Day Every Day!
Organic Wine and Beer • Home Brewing • Gluten Free Items
Organic Produce • Monthly Specials

If

YOU LOOK CLOSELY

you'll see

the Arts
change
everything.



Rinck

113 Lisbon Street
Lewiston, Maine 04240
(207) 755-9470
www.rinckadvertising.com

THERE WILL BE DRAMA

AND MUSIC AND DANCING
FOLLOWED BY COCKTAILS
AND CELEBRATION



Roopers
EST. '92

AUBURN

301 Main Street, Auburn | 783.9098
545 Minot Ave, Auburn | 783.2047

LEWISTON

794 Sabattus Street, Lewiston | 783.6353
686 Main Street, Lewiston | 344.1200
1420 Lisbon Street, Lewiston | 333.3095

OXFORD

980 Main Street, Oxford | 539.6072



132 Lincoln St.
Lewiston, Maine 04240
(207) 783-8593

130 Western Ave.
South Portland, Maine 04106
(207) 775-5381

www.fxmarcotte.com

Serving our community since 1938

Online Banking
Mortgages
Auto & Personal Loans
Checking & Savings
Credit Cards
And more!



Maine Family
Federal Credit Union



mainefamilyfcu.com

@Mainefamilyfcu

555 Sabattus Street | 831 Minot Avenue
Lewiston, ME 04240 | Auburn, ME 04210
(207) 783-2071

SafeVoices

Here for those experiencing *domestic abuse, sex trafficking, or sexual exploitation.*



1-800-559-2927

safevoices.org



- ★ Call to talk, safety plan, or ask questions
- ★ Open and available for all
- ★ Free & confidential
- ★ Supportive advocacy
- ★ 24 hours a day, 365 days a year

Hammond Lumber Company



Kitchen, Bath & Flooring Center

A Division of Hammond Lumber Company

- ✓ FRIENDLY AND PROFESSIONAL SALES STAFF
- ✓ COMPLETE SHOWROOMS WITH FUNCTIONING DISPLAYS
- ✓ FREE 3D DESIGN SERVICES WITH PURCHASE OF MATERIALS

**Revitalize the
Heart of your Home.**

22 LOCATIONS ACROSS MAINE & NEW HAMPSHIRE

AUBURN • BANGOR • BAR HARBOR • BELFAST • BELGRADE • BLUE HILL • BOOTHBAY HARBOR • BRUNSWICK • BUCKSPORT
CALAIS • CAMDEN • CHERRYFIELD • DAMARISCOTTA • ELLSWORTH • FAIRFIELD • FARMINGTON • GREENVILLE
MACHIAS • PORTLAND • ROCHESTER (NH) • ROCKLAND • SKOWHEGAN

WWW.HAMMONDLUMBER.COM

Why are our ticket prices so affordable?

Your ticket to the Public Theatre is affordable because we want it to be. It's not a mistake, it's a mission.

WE BELIEVE THEATRE IS FOR EVERYONE.

That is why our founders named us THE PUBLIC THEATRE.

With one of the lowest prices for professional theatre in Maine, and probably all of New England, we know that most people in our audience might still see a show if the cost of our tickets were 5 or 10 or even 20 dollars higher, but we also know that higher pricing would leave some people out.

Right now some people in our community just can't afford to see theatre on a regular (or even occasional) basis. Why does that matter? Because the free exchange of ideas between people of different backgrounds is what inspires growth and change and compassion in a community -- and who couldn't use more of those?

If you're someone who would pay more for a play at The Public Theatre, and believe in the value of an inclusive community, please make a contribution. You can even add it to your order the next time you purchase a ticket.

Donations to The Public Theatre are tax deductible and go directly towards helping us create great theatre for everyone.

Thank you for paying it forward!



Make a secure donation at: ThePublicTheatre.org/donate

Visit the Box Office or call us at 782-2211

Mail your donation to:

The Public Theatre

31 Maple St., Lewiston, ME 04240



The Public Theatre was founded to bring high quality professional theatre to the people of Maine, at an affordable price. We strive to make our presentations accessible to all, especially those less likely by tradition or inclination to attend live theatre. In choosing our season, we look for plays that speak from the heart; that are life-affirming and uplifting even when the subject matter is dark or painful; that use our language in powerful and provocative ways; that invite the audience to see their world in a new way. Artistic excellence is central to the mission of The Public Theatre.

The Public Theatre is a member of Theatre Communications Group (TCG), the national organization for the American theatre.

Board of Directors

- Kari Grant-Gagnon..... President
- Jennifer Malloy Vice President/Secretary
- Thomas H. Platz..... Treasurer

- Deana Albert
- Peter Kowalski

- Heidi McCarthy

Staff

- Ray Dumont Executive Director
- Janet Mitchko Artistic Director
- Carol Ham..... Business Manager
- Jennifer Madigan..... Asst. Director Marketing/Development
- Adam P. Blais Production Mgr. /Artistic Associate
- Dmitri Kubbs..... Technical Director
- Elijah Moore Assistant Technical Director
- Kathy Lawrence, Reen Robillard Box Office Staff
- Brandon Chaloux..... House Manager
- Aaron Louque Concession Manager
- Christopher Schario Dramaturg

THE PUBLIC THEATRE takes pride in recognizing our season sponsors. We seek to develop a partnership with local businesses working together for the enrichment of the Lewiston-Auburn area. The following businesses have joined us in this partnership. If you would like to see your company listed here, please contact us regarding sponsorship opportunities.

SEASON UNDERWRITERS

[Platz Associates](#)
[Sun Journal](#)
[WOXO 92.7 & WIGY 105.5/95.7](#)

[Morton-Kelly Charitable Trust](#)
[The Shubert Foundation](#)

CORPORATE SHOW SPONSORS

[Androscoggin Bank](#)
[Androscoggin Home Healthcare +
Hospice](#)
[Auburn Manufacturing](#)
[Austin Associates, CPA](#)
[Bangor Savings Bank](#)
[Baxter Brewing, Co.](#)
[Berube's Complete Auto Care](#)
[Butler Bros.](#)
[Central Maine Healthcare](#)
[Cross Insurance](#)

[Dirigo Federal Credit Union](#)
[Evergreen Subaru](#)
[I.B.E.W. Local 567](#)
[LA Metro Magazine](#)
[Lee Auto Malls](#)
[Lewiston Pawn Shop](#)
[NAPA Coastal Auto Parts](#)
[Norway Savings Bank](#)
[Twin City Times](#)
[Warp + Weft](#)

EDUCATIONAL UNDERWRITERS

[Austin Associates, CPA](#)
[Cross Insurance](#)
[Helen & George Ladd Charitable Corp.](#)

[Margaret E. Burnham Charitable Trust](#)
[Onion Foundation](#)

EDUCATION PARTNERS

[Carrabassett Coffee Company](#)
[Hilton Garden Inn - Auburn Riverwatch](#)

[Lewiston / Auburn Children's Foundation](#)
[Liberty Mutual Insurance](#)

SEASON SUPPORTERS

[Auburn-Lewiston YMCA](#)
[Evergreen Custom Printing](#)
[Lisa Laliberte State Farm Insurance*](#)

[Roy I. Snow, Inc.](#)
[Sherwin-Williams](#)
[YWCA of Central Maine](#)

**performance sponsors*

GRANT SUPPORT

[Maine Arts Commission - an independent
state agency supported by the NEA](#)

[Maine Community Foundation
- Maine Theater Fund](#)



SECRET HOUR

By Jenny Stafford

Directed by
Chris Clavelli +

Stage Manager
Christine Lomaka*

Costume Design
Kevin Hutchins

Set Design
Chez Cherry

Lighting Design
Matthew Brian Cost

Sound Design
John Morrison

CAST

(in order of appearance)

Kate Katharine McLeod*
Ben Jason Cadieux*
Leaf Joshua Adams*



** Member of Actors' Equity Association, the union of professional actors and stage managers in the United States.*



+ Member of Stage Directors and Choreographers Society, a national theatrical labor union

Secret Hour is Sponsored by

For Licensed Electricians Seeking Top Pay & Benefits

\$3K
Sign On
Bonus

IBEW
LOCAL 567
PORTLAND, MAINE



**Total package valued at over \$112,000/year.
Hourly pay is \$36.43/hr with an additional
\$6.08/hr going into your retirement... AND MORE!**

*** Benefits Include ***

- ◆ Consistent raises every 6 months
- ◆ 100% employer paid health insurance including medical, dental, and vision
- ◆ 3 separate 100% employer paid pension accounts
- ◆ Life insurance included in benefits package
- ◆ ...and much more! To learn more just give us a call at 207-786-9770 x103

**Contact
John Davis at
207-786-9770 x103**

*Enjoy the stability,
great pay, and
an unmatched
benefits package!*

Secret Hour is Sponsored by

warp+weft

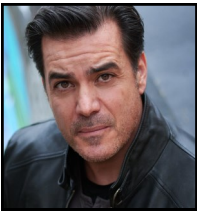
The arts bring
texture to
our lives and
community.

Brand with texture.

f in @ warpweftbranding.com



KATHARINE MCLEOD (*Kate*) is thrilled to be returning to The Public, where she previously appeared in *Last Gas*. Originally hailing from Vancouver, BC and now based in Brooklyn, she has performed with companies across the US and Canada. Favorite regional credits include *Cat on a Hot Tin Roof* (Triad Stage), *Pride and Prejudice* (Actors Theatre of Louisville), *Miracle on South Division St* (Geva), *Comedy of Errors* (Vermont Shakespeare), *God of Carnage* (Sudbury Theatre Company), and *Inge Snapshots* (Outstanding Performance Award, Toronto Fringe.) In NYC, she has appeared in *Love, Sex, & Real Estate*, *The Religion Thing*, *Persuasion*, *Wonder of the World*, and the award-winning FringeNYC production of *Dear Harvey*. Katharine is currently on faculty at Circle in the Square Theatre School and has been a guest artist at Rider University, Memorial University of Newfoundland, Santa Fe University of Art and Design, and Willamette University. She holds a BA in Theatre and Performance Studies from UC Berkeley, and an MFA in Acting from the University of Washington. Katharine is a proud member of Actors' Equity. Much love and gratitude to Bill.



JASON CADIEUX (*Ben*) is an actor and playwright. His most recent appearance at The Public Theatre was Rudy in Norm Foster's *Wrong for Each Other*. Jason was an ensemble member at the Shaw Festival Theatre for the last 5 seasons which included roles in *Cyrano De Bergerac*, *Doctor's Dilemma* and *Gypsy*. Other credits include *The Wedding Party* (Crow's Theatre) *Hosanna* (Soulpepper), *The Valley* (Essential Collective Theatre), *Jerusalem* (Outside the March). TV & Film Credits include roles in: *Blue Bloods*, *FBI*, *The Coroner* and *Law & Order: SVU*



JOSH ADAMS (*Leaf*) is a Brooklyn based actor who received his B.A. in Theatre at UCSD and minored in Political Science. Some Theatre Credits Include: Woolly Mammoth: *Appropriate*. Studio Theatre: *The Big Meal*. Mosaic Theater: *In His Hands*, *Theory*, *The Agitators*, *Hooded, Or Being Black for Dummies*. 1st Stage: *The Phlebotomist*, *The Cripple of Inishmaan*. Folger Theatre: *Love's Labor's Lost*. Everyman Theatre: *An Inspector Calls*. Theater J: *Trayf*, *The Last Night of Ballyhoo*, *The Sisters Rosensweig*, *The Intelligent Homosexual's Guide...* Theater Alliance: *The Events* (Robert Prosky Award for Outstanding Lead Actor in a Play – Helen), *The Raid*. Rorschach Theatre: *REYKJAVIK*. Keegan Theatre: *American Buffalo*, *An Irish Carol*, *A Few Good Men*. Some Film Credits

Include: *Thank You, The Coming Storm, Dinner with the Alchemist, Geographically Desirable, You'll Be Fine.*

JENNY STAFFORD (*Playwright*) is an award-winning book writer, lyricist, and playwright whose works have been heard on Broadway, regionally and internationally. She holds a MFA from the Graduate Musical Theatre writing Program at NYU's Tisch School of the Arts. Her work has been featured at the Lincoln Center Songbook Series, Prospect Theatre Company, The National Alliance for Musical Theatre Songwriter Salon, the New York Musical Theatre Festival, 54 Below, Ars Nova, Joe's Pub, and numerous other NYC Venues. She's been an Artist in Residence at a number of venues; including the Rhineback Writers Retreat, Village Theatre, the Johnny Mercer Writers Grove at Goodspeed, the Catwalk Institute, and the Berkshire Playwright Theatre. Jenny is also a prolific teaching artist, teaching with the Metropolitan Opera Guild, the New York City Children's Theatre, Trinity Music NYC, and Colorado Christian University. She has been a guest lecturer/artist at New York University, Baruch College, Indiana University, Santa Clara University, SUNY New Paltz, and Fordham University. She also spent two summers teaching theatre and songwriting at Shant Bhavan in Bangalore, India, with Artists Striving to End Poverty.



CHRIS CLAVELLI (*Director*) is the resident director of The Florida Repertory Theatre where he has directed/acted in over 35 productions. His direction of *House of Blue Leaves* at The Rep was honored with "The Best of 2017" by chief critic, Terry Teachout in The Wall Street Journal and he received a Best Director Award for his production of *Time Stands Still* at FRT. He has performed Off Broadway, regionally and on Film, TV and commercials. He is a recipient of a Carbonell for Best Actor and a Barrymore Award. His direction earned him an Alan Schneider directing nomination through Theatre Communications Group. He co-founded The Neighborhood Theatre for Kids and Brave New World Theatre in Brooklyn. The former served over 3,000 children a year. He has taught for Point Park University, NYU, CAP 21, Molloy College, The Actors Studio Drama School/Pace University/MFA program, AMDA, The New York Conservatory for Dramatic Arts, Florida Gulf Coast University and The New World School of the Arts. His book, *Notes From The Room, your guide to acting and the entertainment field*, is being published this summer. Later this season, he directs *Oleanna* for Florida Rep. He is a proud Pittsburgher.



RAY DUMONT (*Executive Director*) is overjoyed to come back to his hometown as Executive Director of The Public Theatre. He grew up in Lewiston and was educated in Lewiston schools. Most recently he was Director of Development for Theatre Aspen, after two years as Associate Education Director at the Ogunquit Playhouse. He attended Boston University School of Management, where he majored in Finance and Marketing. Ray has been working in professional theatre for over 30 years, as performer, educator, director, choreographer, and administrator. Although his career has taken him all over the country, Maine has always been his home base. He has enjoyed over 20 seasons at Maine State Music Theatre, including four incredible years as Managing Director from 1999-2003. During those years, MSMT refurbished a former bus garage into its current production and administrative home in Brunswick. Ray is dedicated to creating art that starts conversations, brings people together, and improves the quality of life in our communities, all the while providing great entertainment, here in Lewiston/Auburn. He is forever grateful for the support of his amazing family, all of whom reside in Maine, and for the daily encouragement of his partner, Josh. Proud member of AEA (Actors' Equity Association) since 1995.



JANET MITCHKO (*Artistic Director*) As Artistic Director of The Public Theatre, Janet has spent the past 30 years making theatre in Maine as both a director (*Incident at Our Lady of Perpetual Help, Paint Night, Morning After Grace, Dancing Lessons, Middletown, Sexy Laundry, Hound of the Baskervilles, Around The World in 80 Days, etc*) and actress (*Be Here Now, A Doll's House, PART 2; The Ladies Foursome; Good People; Time Stands Still; etc*), and is proud to call The Public Theatre her artistic home. Prior to life in Maine, Janet lived in NYC earning her living as a professional actress, voice-over talent, and director as well as teaching acting at The American Academy of Dramatic Arts. She is a graduate of the acting program at Carnegie-Mellon University and her favorite role will always be the proud mother of bside.beehiiv.com creator Emily Schario

CHRISTINE LOMAKA (*Stage Manager*) has had the good fortune to have worked with The Public Theatre on numerous productions, most recently *A Christmas Carol*. Other companies she's worked with include Arizona Theatre Company, Martha's Vineyard Playhouse, Trinity Rep, Portland Stage Company, Actors Theatre of Louisville, Syracuse Stage,

LA Opera, and Houston Grand Opera. Chris spent 15 years in Los Angeles working in film, television, opera and theater, and was the production manager and lighting designer for The Groundlings. Chris has been a member of Actors' Equity since 1987.

CHEZ CHERRY (*Set Designer*) Studied theatre at Manchester University [UK]. Now in his 45th year as a professional designer during which time he has designed for theatre, T.V., theme parks, museums and restaurants all over the world. He garnered 4 Emmy nominations for Production Design on *Tracey Takes On...* for HBO. This is his second design for The Public Theatre. Recent work includes set design for *Crimes of the Heart* for Penobscot Theatre Company, a brand new café/bar 'the Stage Door' for Bangor Opera House and a painted mural for the Discovery Museum in Bangor.

KEVIN HUTCHINS (*Costume Designer*) is excited to be making his Public Theatre design debut! He has worked as a costume designer for many years, all over New England. He is on the USM Theatre Department faculty as the Costume Director/Professor; he holds an MFA in Costume Design from Boston University and a BFA in Musical Theater from The Boston Conservatory at Berklee. Kevin has costume designed for many theater companies, including The Ogunquit Playhouse, Wheelock Family Theatre, Greater Boston Stage Company, The CIC Theater Company, and Boston Playwright's Theater. In addition, Kevin was a founding member of the CIC Theater Company and served as the Production Manager and Resident Costume Designer for over five years, bringing theater and theater education to Boston's underserved youth. <https://kevinhutchins.myportfolio.com> for more of his work!

MATTHEW BRIAN COST (*Lighting Designer*) has been designing lights for theater, dance, music and more for the last twenty-five years, from his alma mater Colby College to greater New England and beyond. Previous designs at The Public Theatre have included *Perfect Nonsense* and *Pilgrims Musa and Sheri in the New World*. Other select recent credits include *The Wolves* at the Westborough High School, *Sweet Charity* at Boston Conservatory at Berklee, and *The Rocky Menorah Christmas Show* by Gold Dust Orphans. Matthew lives in East Weymouth, MA with his wife Abby, son Simon and pitbull Roadie.

JOHN MORRISON (*Sound Designer*) is a sound technician from Auburn, ME. John's main gig these days is mixing live music performances at The Opera House in Boothbay. John has worked several seasons in

the sound department at The Public Theatre. Notable recent projects at the Public include *Fireflies*, directed by Judith Ivey, *I and You* and *Grease*. Sound work at Portland Stage has included an original musical, *Senior Living*, directed by Ms Ivey, and a co-production with MSMT, *The Irish And How They Got That Way*. Along the way he has provided tech support to theater and dance programs at Bates College, and to the Bates Dance Festival. He has mixed live performances of David Lang's *the little match girl passion* for Figures of Speech Theater. Over the years, John has worked on recording projects with James Taylor, Spalding Gray, and Chris Botti. Finally, it is unlikely that anyone recalls John's audio contributions to early '80's New York productions of *Taking Steam*, *The Smiling Assassins*, or *Mysteries of the Bridal Night*.

DMITRI KUBBS (*Technical Director*) Professionally Dmitri has split his career between environmental education, managing petting zoos, and theater production. Most recently he made the titular prop for Opera Maine's production of the "The Rocking-Horse Winner". He lives in Auburn with his wife, son, and lots of unfinished projects.

ELIJAH MOORE (he/him) (*Assistant Technical Director*) is a Temple University graduate. Since graduating Elijah has worked mainly as a lighting technician at countless venues in the Philadelphia area such as The Wilma, The Arden, The Interact, The Bucks County Playhouse, and The Bearded Ladies. Additionally, Elijah worked as Assistant LD and Electrician in Medora North Dakota, with Stage West Productions, and most recently filling in as Electric Supervisor in Door County, Wisconsin with the Peninsula Players. During his free time, he likes to go to the skatepark, snowboard, listen to live music, play roller hockey, and disc golf. Elijah is a positive person and loves working with a team.

MCKENNA CANTY (*Assistant Stage Manager*) is excited to be back at The Public Theatre! She's from the Boston area, and she graduated from UMass Amherst in 2021 where she studied communications and theater. She also appeared as Belle/Fan/Martha in *A Christmas Carol* and assistant stage managed *Paint Night* here, this season. Previously, she was a Development Associate at Studio Theatre in Washington, DC for their 22/23 season. She also has experience as a house manager, wardrobe crew member, and marketing videographer. Growing up, she spent many summers on Sebago Lake and in Fryeburg, so she's thrilled to be back in Maine once again.



ACTORS' EQUITY ASSOCIATION was founded in 1913 to protect Actors from the severe mistreatment that permeated the industry at that time. Since its inception Equity has had only nineteen Presidents. Its current President is Kate Shindle. The Association consists of over 51,000 distinguished stars and other professional Actors and Stage Managers who work nationwide, from New York's Broadway to Los Angeles, from Minneapolis to Miami Beach, in regional, stock and dinner theatre, and in theatres for young audiences which build the audiences of tomorrow. These Actors and Stage Managers are committed to working in the theatre as a profession, not an avocation, and bring to you the finest professional training and experience. By presenting Equity productions, this theatre offers to you, our audience, the best entertainment presented by the finest quality Actors and Stage Managers that your admission dollars can buy.

WANT FREE TICKETS TO THE PUBLIC THEATRE?

**We are looking for poster volunteers
for the following routes:**

**Bowdoin/Bowdoinham
Leeds
Litchfield
New Gloucester/Gray
Portland**

**Inquire at the Box Office if you are interested
or call 782-2211**

2023-24 Season Underwriters

PLATZ ASSOCIATES

Since 1980



Architects • Engineers

Construction Managers

Two Great Falls Plaza
Auburn, ME 04210

207-784-2941
platzassociates.com

Sun Journal

Connecting you with your community

sunjournal.com



Special Thanks

A huge thank you to all of our wonderful
poster people and ushers
who are too numerous to name.
We couldn't do what we do without YOU!

Coming Soon . . . Tickets on Sale Now

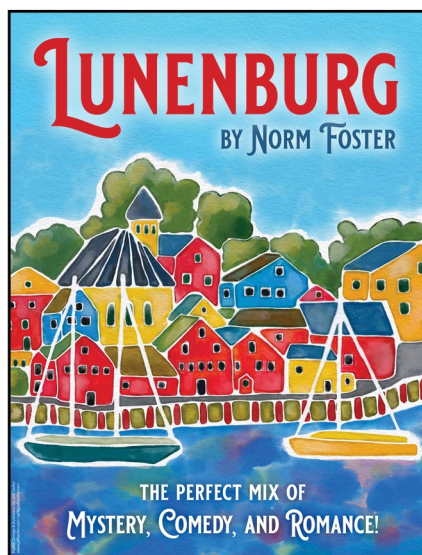
It's the perfect mix of mystery, comedy, and romance. When Iris's husband is unexpectedly killed in a plane crash, her lawyer reveals she has inherited a beautiful home in Lunenburg, Nova Scotia - that she never knew existed!

Setting out from her home in Brunswick, Maine with her best friend in tow, she begins a laugh-filled, poignant road trip North to unravel the mystery of her husband's secret life. What follows is a series of gasp-worthy surprises, powerful personal transformations, and lots of funny flirting between her best friend and new neighbor.

Don't miss this intelligent comedy about accepting change and learning how to move forward by the author of the hit comedy *The Ladies Foursome*.

May 3-12

\$30 Adult / \$25 Group (10+) / \$20 Student (19+ w/ID)



Sponsored by Auburn Manufacturing,
Austin Associates, Bangor Savings Bank

ThePublicTheatre.org
782-3200

**the PUBLIC
THEATRE**



Tanglewood Marionettes' award winning production of Cinderella is a classic fairy tale told with wit and style, sure to please audiences of all ages. **Great for ages 4 and up!**

Set in the eighteenth century and featuring a dozen lavishly costumed 30" marionettes, the story unfolds as the pages of a giant book open to reveal a beautifully painted village square, rustic kitchen, magnificent ballroom, plus many more settings. All your favorite characters are here, from gentle Cinderella to the silly stepsisters and the charming Prince. Don't miss this magical classic told in a way you've never seen before.

Sponsored by Norway Savings Bank

From the VALENTINE BALL

This year's Valentine Ball was a huge success. Please recognize the local businesses that helped make this important fundraiser for our Education Programs possible.

Sponsored by:

Baxter Brewing, Co.

Special Thanks to:

BJ's Wholesale Club
Flagship Cinemas
Hannaford - Turner
Home Depot - Auburn
Kora Shrine Temple
Music Reflections
Pepsi Beverages Co.
Shaw's - Lewiston
Whitaker Imagery
warp + weft

A huge special thank you to the Valentine Ball Committee for all of their hard work!



Tickets to the 2025 Valentine Ball go on sale the Monday after Thanksgiving.

The Public Theatre's Assisted Listening System was funded in part by **Dr. & Mrs. Ben Lounsbury** and a grant from the **Maine Arts Commission**, an independent state agency supported by the National Endowment for the Arts.



We are pleased to offer hearing assistance free of charge to help patrons with hearing difficulties enjoy our productions to their fullest, no matter where they are seated in the Theater. We are using a system which transmits an FM signal to a personal receiver outfitted with lightweight headphones, or neck-loop for hearing aids equipped with a T-coil. Please inquire at the Box Office for more information.



INDIVIDUAL DONORS

Contributions are the cornerstone of a not-for-profit theatre. Ticket sales generate less than 40% of our income. We thank the following individuals who have supported The Public Theatre with their generous financial contributions. **If you would like to join our Individual Donors, please call 782-2211.**

Star (\$1000+)

Anonymous
Maury & Joseph Bohan
Gillian Ehrich
Vivianne Holmes
Philip & Susan Morgan
Sheri Olstein
Tom Platz & Paula Marcus-Platz*
Margo & Jack Simmons
The Walworth Family Fund*
Robert & Susan Weiss*

Producer (\$500-\$999)

Ed & Louise Buschmann
Marty Corey
Jerry & Gretchen Davis
Phyllis Deringis
Bill & Cynthia DeSoi
Ken & Melinda Emerson
Anonymous
In Memory of Linda C. Gamble
Eugene Geiger
Anonymous
Jim & Julie Jackson
Ben & Bonnie Lounsbury*
Mr. & Mrs. William Luening
Elaine Makas
Niels & Kelly Mank
Barbara & Lanny Oliver
William Phillips
Deborah Savadge & Geoff Peterson
Daniel & Debra Snow

Director (\$250-\$499)

Bruce W. Allen
Jeffrey & Susan Brown
John Cariani
Michelle & Normand Groleau
Ralph & Melinda Harder*
Michael Jones & Judith Head
Robert & Nancy Kleckner
Gary & Lynn Knight
Adam Lee & Heidi McCarthy
Alice & Mark Mogensén
Darby Ray & Raymond Clothier
Luanne & Rex Rhoades
Anonymous
Pete Small
David & Kathleen Stuchiner
Hally & David Sysko
Ann E. Weiss

Leading Actor (\$100-\$249)

Ralf & Jody Anderson

* Denotes Theatre Founder

Paul & Nina Baril
Gene & Ellen Benner
Carmen Bennett
Fred & Janet Bishop
Linda Bishop
Ronald & Donna Bissonnette
Rev. Dr. Judith Blanchard
David Blocher & Helen Warren
John & Doris Bonneau
Brenda Boothby
Jonathan Bradshaw
M. Elaine Briggs
Margaret Burroughs
Katy Cavanaugh
Deborah Chandler
Christina M. Moylan
Rae Clark-McGrath
Ellen Crawford & Mike
Genovese
Althea Croxford & Phil Blake
Marian Dalton & Robert Spivey
Philip Davis
Richard & Barbara Diamond
Art Dingley, Tami Cooper
Olga Dolgiczer
Grace Drown
Josephine & Stephanie Dupal
Anonymous
Bruce Edwards
Alice Faucher
Lynda & Dick Giard
Rhonda Gioia
Anonymous
Bruce & Elizabeth Grant
Robert Grieshaber
Anonymous
Robertta Guillory
Greg & Betsy Hansom
Fred & Heather Hersom
David & Cori Holt
Barbara Howard & Nick Poulton
Wendi & John Hubbard
Richard & Jackie Jordan
James Kearney & Carol Rice
Lee & Ingrid Kendall
Katharina Keoughan
Joseph Klapatch in Memory of
Michael Jinbo
Paul Knight
Ray & Sue Lagueux
Richard & Joan Legendre
Virginia Marczak
Drew Masterman
Pam & Michael Matzinger
Heather & Bill McCarthy
Joseph P. McGovern
Steve & Nancy Menneally

Madeleine Love & Jonathan
Mitschele
Cynthia Morgan
Paul & Kathy Moriarty
Christina Moylan & Thomas
Knowlton
Jeff & JoAnn Newell
David & Joel Ann Oshansky
Debra & Craig Phillips
James & Candace Platz
Joyce A. Polyniak
Douglas Rees
Martha Richardson
Carolyn Robertson
Craig & Carol Robinson
In Honor of Peter J. Kaynor
Suzanne R. Roy
John & Susan Saunders
Patricia & Stephen Sawyer
Alison Smith
Sharon & David Staszak
Jeff & Sue Sturgis
Ross & Christine Swain
David + Holly Sysko
Woody & Janet Tarbuck
Wendy Tardif
Stan & Cathy Tetenman
Bette J. Swett-Thibeault
Cecile Thornton
Adriann M. Tucker
Craig Urquhart
Richard & Lois Wagner
Judy Lloyd & David Wallace
Anne Weatherbee
Bridget & Richard Whiting
Liz Wilson
Frank & Louise Wotton

Stage Manager (\$50-\$99)

Marsha Ancker
Tony & Marcia Augello
Nancy Orr & Edward Barrett
Jackie Bernier
Jennifer Black
Bruce Boynton
Claire Breton
Curtis Brown
Anonymous
Anonymous
Barbara Connell
James Crary & Pamela Gross
Susan Craves
Suzanne Crowell
Rachel A. Cyr
Cara David
Joanne Desormiers

Kathleen Dietrich
Carolyn Downing
Penny Drumm
Patricia Faunce
Judith Fergin
Paul & Cyndi Fortier
William Fuller
Anonymous
Patricia Gautier
Kimberly Golden
Ann Hartzler
Allen & Libby Harville
Melanie & Gary Hatfield
Connie Hitchcock
Mary E. Houlihan
Janet Isbell
Stephen B. Jacobs
Anonymous
Lincoln Jeffers
Mike & Janet Joseph
Camilla Lampron
Sarah Lawrence
Natalie Rose Liberace
Mary & Vincent Louque
Stephen & Irene MacDougall
Anonymous
Diane Maheux
Gerry & Claudette Martel
Joanne McDermott
Lee Morin
Arlene Morris
Nancy Morris
Maura O'Brien
Kathleen O'Donnell
Stephen Petersen
Gil Peterson
Meg Peterson
Edouard Plourde
Grace & Kenneth Reed
Kim Relick
Clayton (Mac) Richardson
Quimby & Mitzi Robinson
Millard Rose
David Scribner
Susan Wygal & J. Gregory Shea
Karen Shumac & Larry Whittington
Robert & Elly Simard
Julie Spugnardi
Gretchen Stanton

Kristin G. Sweeney
Ann & John Thaxter
Lisa & Marc Therrien
Ralph & Donna Thivierge
Claire Thompson
Susan & Elwood Trask
Sue Tymoczko
Crystal Ward
Anonymous
Judith Webber
Bethany & Paul Whalon
Diane Whitmore
Kathy Wyatt
Carole Zalucky

Supporting Actor (\$20-\$49)

Judith Abromson
Richard Adams
Paul E. Baribault
Bruce & Pam Bell
Susan Boyd
Aaron & Ellen Burke
Presley, Kaylin, Gavin
Sandra Carder
Catherine & Kevin Carey
Jacqueline Caron
Sandra Chamberlain
The Condit Family
Alvin Da-Costa
Judy D'Amour
Janel Danforth
Jeanne David
Patricia Davis
Dawn DeBerry
Johannah DeGrandpre
Leo Delicata
Abigail Douglas
Diana Dowd
Rebecca Drew
Carmen Dufresne
Carol Duplessis
Hannah Estes
Christina Finneran & Paul First
Lorraine Fitz
Anna & Ed Flotten
Denis & Pauline Fortier
Mary Fortunato
Susan Glines
Susan & Kenneth Gordon

Vickie Gould
Evelyn Greenlaw
Mrs. Gisele Guerrette
Jody Harris
Linda A. Hill
William Hodgkins
Nan Hughes & Norman Rich
Susan Kane
Cheryl King
Rodney & Vickie Kuhl
Jerryanne LaPerrière
Michael Levey
Katie Luz & John Scherbarth
Doreen Maxwell
Betty McCall
Shawn McDonnell
Sheila McGarr
Roger & Lucile Mills
Cynthia Morgan
Roland Morin & Laura Cote
Sandra Morrell-Rooney
Debbie Nelson
David Newer
Leon Parker
Joan Pedersen
Richard & Rose Pelletier
Elizabeth Perreault
Lewis Perry
Elizabeth Plummer
Cecile Potvin
Carl Prouty
Paul & Sharron Raczynski
Emily Reese
Julia Reuter
Lucille Rioux
Dave & Judy Sargent
Barbara & Michael Shapiro
Sue & Ken Spalding
Susannah Stiker
Anita L. Stone
Linda Stone
Richard & Jackie Strong
Carol & Steve Thomas
Cheryl Van Messel & Charles Bross
Joseph Varuolo
Melissa & Gary Veilleux
Peggy Volock
Patricia A. West
John & Betty Woodbury

[Donate Online](#)

This list reflects donations of \$20 or more received through March 1, 2024

Enjoy a hot cup of coffee today!

CARRABASSETT
COFFEE COMPANY

Call Toll Free: 1-888-292-BEAN
carrabassetcoffee.com

Educational Programming

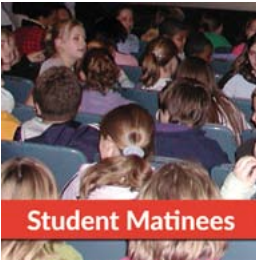


DID YOU KNOW?

Our Educational Programming has served over 113,000 students, educators and families, including over 100,000 \$5 Student Matinee tickets?

The Public Theatre's Education Programs provide children with the opportunity to experience live professional theatre, serve as an educational resource for Maine schools, enrich the lives of young people, and encourage our next generation's participation in the cultural life of their community.

This programming is made possible through the generous support of our Education Sponsors and you, our patrons.



Each Student Matinee features \$5 tickets and a post-show talkback with the actors and director. Student rates are also available for our public performances. To help Educators make the most of the experience, free study guides are available prior to attending and pre or post-show workshops about the production are available upon request. This experience cultivates the habit of participating in the cultural life of their community and gives them an experience that will expand their world in new and exciting ways.



As theatre professionals we have taken our skills and created FREE live and virtual workshops that can easily fit into most curricula. These workshops were originally created to help support teachers and the Arts in schools during the pandemic and presented virtually to classes as far away as Monhegan! They were so successful they are now a regular part of our programming! Serving Grades 3-12.



Classes choose a story from the public domain and illustrate it. We create a high quality video story we share with libraries, our patrons and the general public. The Art of Storytelling can be done with any grade at any level of artistry. You can see the finished videos at youtube.com/ThePublicTheatre

**Read more about our Education Programs:
ThePublicTheatre.org/student-matinees
or call 782-2211**



Let us help you write **your** next chapter.



At Norway Savings Asset Management Group, it's not necessarily the size of your nest egg we care about — it's the story behind it. Your planning decisions are a reflection of your values and your future. They're about the choices you've made to get here, and your vision for what comes next. We take the responsibility of protecting your financial future incredibly seriously. We make sure your story lives on.

INVESTMENT MANAGEMENT • TRUST SERVICES
FINANCIAL ADVICE • ESTATE PLANNING

207.482.7920 | [NorwaySavings.bank](https://www.NorwaySavings.bank)

Not FDIC Insured • No Bank Guarantee • May Lose Value

 **Norway
Savings**

ASSET MANAGEMENT GROUP

For the **life** you choose.

Business Listings

Androscoggin Home Healthcare + Hospice.....207-777-7740

15 Strawberry Ave., Lewiston, ME 04240

www.androscoggin.com

Austin Associates, P.A.....207-783-9111

Certified Public Accountants

Auburn • Norway • Skowhegan www.austinpa.com

Berman & Simmons, P.A.207-784-3576

Personal Injury Trial Attorneys

Portland • Lewiston • Bangor

bermansimmons.com

Norman, Hanson & DeTroy, LLC207-774-7000

Attorneys-at-Law

Two Canal Plaza, Portland, Maine 04101

nhdlaw.com

Optometric Associates.....207-784-3564

Home of Healthier Eyes

168 East Avenue, Lewiston, Maine 04240

www.optometricassociates.com

Roy I. Snow, Inc.207-782-3734

Electrical Contractor

11 Library Avenue, Auburn, Maine 04210

www.roysnow.com

EMERSON



CHEVROLET



BUICK®

946 Center St. • Auburn

emersonchevy.com

(207) 784-3503 • (800) 696-0766

 **State Farm®**

Lisa Laliberte, Agent

224 Russell Street

Lewiston, ME 04240

Bus: 207-783-3332

lisa.laliberte.gqph@statefarm.com



MAINE STATE MUSIC THEATRE 2024 SEASON!

Rodgers & Hammerstein's
SOUTH PACIFIC
JUNE 5 - 22



FUNNY GIRL
THE MUSICAL
JUNE 26 - JULY 13



Irving Berlin's
WHITE CHRISTMAS
THE MUSICAL
JULY 17 - AUGUST 3



Beautiful
The Carole King Musical
AUGUST 7 - 24



CONCERT SERIES

<p>THE WAY WE WERE</p> 	<p>WONDERFUL CRAZY NIGHT</p> 	<p>GREAT BALLS OF FIRE</p> 
<p>THE SONGS OF CELINE & BARBRA JUNE 16 & 17</p> 	<p>THE NEW ELTON JOHN TRIBUTE JULY 7 & 8</p> 	<p>THE LEGENDARY MUSIC OF JERRY LEE LEWIS JULY 28 & 29</p> 

FAMILY THEATRE

<p>Robin and Clark's Beauty and the BEAST JUNE 10</p> 	<p>The Story of the Nutcracker JULY 22</p> 	<p>The Wizard of OZ Youth Edition AUGUST 12</p> 
--	---	--

MSMT
MAINE STATE MUSIC THEATRE

Bringing Broadway to Brunswick

Tickets: msmt.org
207.725.8760

Optometric Home of Healthier Eyes
Associates

Douglas J. Henry, O.D., Ph.D.

Diplomate, American Board of Optometry

Stephen L. Ebersole, O.D.

Diplomate, American Board of Optometry

Abigail R. Carr, O.D.

- Comprehensive Eye Exams
- Over **1000** Fashion Frames In Stock with On-Site Lab for Fast Service
- Contact Lens Specialists
- **New** Dry Eye Center
- Eye Disease Treatment
- Laser Surgery Co-Management

Ask us about
**Lipiflow Dry
Eye Therapy**

**Prescription and
Non-Prescription
Sunglasses**



Serving L/A for
more than 60 Years

784-3564

168 East Ave., Lewiston

www.optometricassociates.com

E-mail: respond@optometricassociates.com



Medicare, Most Insurance
& CareCredit™ Accepted

E-mail: respond@optometricassociates.com

BAXTER®

BREWING CO.

**\$5 OFF
YOUR BILL**

Present this coupon with your
Performance! Playbill ticket
for \$5 off your next meal at
The Pub at Baxter!

CAN'T BE COMBINED WITH ANY OTHER OFFER. NO CASH VALUE. CAN ONLY BE APPLIED TO DINE-IN FOOD AND BEVERAGE PURCHASE. NOT VALID FOR MERCHANDISE OR TO-GO BEER. LIMIT ONE PER CHECK.



DeBlois Electric, Inc.

ELECTRICAL CONTRACTOR • DESIGN BUILD

Building Lasting Relationships Since 1967

- Service • Small Projects • Generators • Smart Homes

www.debloiselectric.com

Lewiston, ME • 207-783-6512



Bank Where You Belong

1000 Lisbon Street
Lewiston, ME 04240

207-783-1475

www.centralmainecu.com



990 Center St. Auburn, ME
emersontoyota.com (207) 784-1348

*“Where You Buy Is As Important
As What You Buy”*

"To enter a theater for a performance is to be inducted into a magical space, to be ushered into the sacred arena of the imagination"

-- Simon Callow



Visbaras Law
&
Excalibur Title
Company of Maine
— LLC —

Providing quality legal services since 1986 in real estate closings, titles and title insurance, zoning and land use, business start-ups, residential and commercial property sales, and individual wills and trusts.

K. Alexander Visbaras, Esq.
195 Center Street
Auburn, Maine 04210

207-376-3126
207-376-3127
kalex@visbaras.com

PENMOR
LITHOGRAPHERS

MARKET YOUR BUSINESS
with **HIGH-IMPACT** PRINT



Commercial Offset Printing
Digital Small Run Printing
Wide Format Signage Printing
Mailing and Fulfillment Services

8 Lexington Street • P.O. Box 2003 • Lewiston, ME 04241-2003
Tel: 207.784.1341 • 1.800.339.1341 • Fax: 207.784.2892
www.penmor.com

Courtesy, Quality and Service . . .
A Winning Combination
Since 1939



Employee Owned

Ruburn • Lewiston • Augusta
Dixfield • Lisbon Falls
Topsham • Brunswick • Freeport

Eat In, Carry Out, Event Catering

samsitalian.com



Blais
Flowers

GIFT SHOP & GREEN HOUSE

539 Webster Street
Lewiston, Maine 04240
Phone: (207) 783-8566
www.blaisflowers.com

*Your florist
for every occasion.*



Supporting the Arts for over 40 years

PLATZ ASSOCIATES
Since 1980 Architects • Engineers
Construction Managers

TWO GREAT FALLS PLAZA • AUBURN, MAINE • 04210 • 207 784 2041



YOUR FUTURE STARTS HERE

**Earn a high-quality
education with one of
the lowest tuition rates
in New England.**

Central Maine Community College offers over 40 degrees and professional development opportunities, all for the lowest tuition in New England. Choose from on-campus, hybrid, or 100% online courses designed to fit into your busy schedule.

We're here for you every step of the way.

FOR CUSTOMIZED TRAINING AND
PROFESSIONAL DEVELOPMENT
OPPORTUNITIES, VISIT
WWW.CMCC.EDU/WORKFORCE

www.cmcc.edu

(207) 755-5273
1250 Turner Street • Auburn

Notice of Non-discrimination: Central Maine Community College is an equal opportunity/affirmative action institution and employer. For more information, please contact Human Resources at 207-755-5396 or humanresources@cmcc.edu.



~FOOD & SPIRITS~

Serving the L/A area since 1985!

Full-Service Family Restaurant
Dining Room and Take-Out Hours
11:00 AM - 9:00 PM Daily

Hot and Cold Sandwiches • Pizza
Pasta • Desserts • Lunch • Dinner
Full-service Bar • Maine Micro-Brews
Gift Certificates

85 Center Street • Auburn, Maine
Call us at 207-784-8221
patsauburn.com



We are proud to support the arts in our community.

As a local community bank we are committed to being a vital part of the communities we serve. We are committed to giving our customers the access and convenience they expect from a modern bank – without sacrificing the personal touch that has always defined us.

**We're Maine Community Bank –
on your corner and in your corner.**

Contact us today!



MAINE
COMMUNITY BANK

207-786-5705

mainecb.com

Alphabetical Business Directory

Androscoggin Home Healthcare + Hospice	A-7, C-3
Arts & Culture LA	C-12
Austin Associates	C-3
Axis Natural Foods.....	A-9
Bates Theatre & Dance	Inside Front Cover
Bates Arts Collaborative	Inside Back Cover
Baxter Brewing & The Pub	C-5
Berman & Simmons	A-5, C-3
Blais Flowers.....	C-8
Business Listings	C-3
Central Maine Community College	C-9
Central Maine Credit Union.....	C-6
Champoux Group, The	A-7
Computer Place, Inc, The	A-6
DaVinci's	A-10
DeBlois Electric	C-6
Dirigo Federal Credit Union.....	A-6
Emerson Chevrolet Buick	C-3
Emerson Toyota	C-6
Fish Bones Grill	A-8
FX Marcotte	A-10
Franco Center, The.....	A-4
Great Falls Federal Credit Union.....	A-8
Hammond Lumber	A-11
Jared Morneau Photography.....	A-2
Leary & DeTroy	A-2
Lisa Laliberte State Farm Insurance.....	C-3
Maine Community Bank	C-9
Maine Family Federal Credit Union.....	A-11
Maine Music Society	A-1
Maine State Music Theatre	C-4
Midcoast Symphony Orchestra	A-5
Norman, Hanson & DeTroy, LLC	A-8, C-3
Norway Savings Bank.....	C-2
Optometric Associates	C-3, C-5
Ouellette & Associates	A-7

continued

Alphabetical Business Directory

Pat's Pizza	C-9
Penmor Lithographers.....	C-7
PERFORMANCE! AD SALES	C-11
Platz Associates	C-8
Public Theatre, The	A-3
Rinck Advertising.....	A-9
Roopers	A-10
Roy I. Snow, Inc	A-6, C-3
Safe Voices	A-11
Sam's Italian Foods, Inc	C-7
Schooner Estates	Back Cover
Studio 88	A-6
Visbaras Law LLC	C-7

**Proceeds from advertisements in
PERFORMANCE! provide important
support to the Arts in your community.**

**Contact us to advertise in this playbill
for 2024-25.**

Penny Drumm • 207.333.3386
penny.smartmanagement@gmail.com





17 Ways to HAVE FUN in L/A

- **Androscoggin Historical Society** androhistory.org
- **Auburn Public Library** auburnpubliclibrary.org
- **Bates Dance Festival** batesdancefestival.org
- **Bates College Museum of Art** bates.edu/museum
- **Community Little Theatre** laclt.com
- **Franco-American Collection at USM** usm.maine.edu/franco-american-collection
- **Franco-Trail L/A**
- **Franco Center** francocenter.org
- **L/A Arts** laarts.org
- **Lewiston Public Library** lplonline.org
- **Maine Music Society** mainemusicsociety.org
- **Midcoast Symphony Orchestra** midcoastsymphony.org
- **Museum in the Streets trail** museumla.org
- **Maine MILL** mainemill.org
- **Olin Concert Series** bates.edu/olin-concert-series
- **The Public Theatre** thepublictheatre.org
- **The Public Art trail** laarts.org



MUSIC



LITERARY ARTS

THEATER

ART+VISUALCULTURE MUSEUM OF ART



DANCE



CELEBRATE THE ARTS AT BATES!



BATES | ARTS COLLABORATIVE

<http://www.bates.edu/events/arts/>

For more information about the
Bates Arts Collaborative, see Bates.edu/arts

[back to Directory Listing](#)

A SERENADE OF JOYFUL LIVING



Schooner Estates
Senior Living Community



Ruth Carpenter
Schooner Estates
Tenant Since 2021

Live your life in harmony at Schooner!

784-2900 • SchoonerEstates.com

Supporting the Arts in L/A for more than 25 years

[back to Directory Listing](#)