



the PUBLIC THEATRE

PERFORMANCE! 2024-25

A Playbill for The Public Theatre and Maine Music Society

Bates | Theater + Dance

2024-25 Season

Fall 2024

WOLF PLAY

by Hansol Jung

Oct 31 - Nov 4

FALL DANCE CONCERT

Student Choreographed Concert

Nov 15 - 17

REVENGE, I SUPPOSE

Thesis Dance Performance

Dec 5 - 6

Photo: Carly Philpott

Winter 2025

BRKFST Dance Company

with Bates Dance Festival

Jan 25

OUT TO DRY

Thesis Dance Performance

Feb 12 - 13

THE SEAGULL

by Anton Chekhov

Mar 6 - 10

BODY AWARENESS

by Annie Baker

Mar 27 - 31

MARCY PLAVIN SPRING DANCE CONCERT

Repertory Artist Choreographed Concert

Apr 4 - 6

Photo: Phyllis Graber Jensen/Bates College

www.bates.edu/theater-dance



*Award-winning Professional theatre
featuring the best plays and actors from Broadway and beyond.*

Dracula A Comedy of Terrors

by Gordon Greenberg and Steve Rosen

Oct 11 - 27

This hilarious Off-Broadway hit filled with silliness, witty wordplay and a nod to Mel Brooks and Monty Python is FANGtastic fun for audiences of all blood types!

A Christmas Carol

Dec 13 - 15 adapted by Christopher Schario

Six actors and a fiddler perform the Dickens out of this beloved holiday classic in a way you've never imagined! Children 18 and under only \$15!

Every Brilliant Thing

by Duncan Macmillan with Jonny Donahoe

Jan 24 - Feb 2

When you're six years old, your mother goes into the hospital because she "finds it hard to be happy" and you start writing her a list of all the things in life worth living for. No. 1: "Ice cream", No. 6: "Friendly cats", No. 517: "The even numbered *Star Trek* films". Told with the help of the audience, this critically acclaimed Off-Broadway hit is a hilarious, heartbreaking, and uplifting experience you will never forget.

Halfway There

Mar 14 - 23 by Norm Foster

It's *Steel Magnolias* meets *The Golden Girls* when four lovable ladies meet every day for coffee and a gab fest in this heartwarming comedy about the unshakable bonds of female friendship.

Now and Then

May 2 - 11 by Sean Grennan

A young bartender and his girlfriend receive an intriguing proposition from a mysterious last-minute customer who offers them \$2,000 to sit and talk with him. What follows is a humorous and magical romantic comedy filled with unexpected wisdom about the joys and consequences of following your heart.

The Dragon King

May 18 by Tanglewood Marionettes

This award-winning story based on Chinese folklore is filled with magical and colorful sea creatures and a Dragon that will knock your socks off! A delight for ages 4+ and their families.



HEALTH PARTNERS

A photograph of a female nurse in a red Andwell vest interacting with a young child in a hospital setting.

**Providing compassionate
health care to Mainers for nearly 60 years.**

Your Partner in
Health, *for Life.*

(800) 482-7412
Andwell.org

A photograph of an audience of people clapping their hands in a theater or concert hall.

Proudly
supporting the
arts
in our
community.

**BERMAN &
SIMMONS**
TRIAL ATTORNEYS

PORTLAND
LEWISTON
BANGOR

800 244 3576
bermansimmons.com



Celebrating Community

2024 - 2025 SEASON

2024 - 2025 SEASON UNDERWRITERS
Hardy Wolf & Downing • Sun Journal

ARTISTIC DIRECTOR
Dr. Richard Nickerson



Saturday, November 2
7:00 pm



Sat., Dec. 14 • 7:00 pm
Sun., Dec. 15 • 2:00 pm



Sat., March 8 • 7:00 pm
Sun., March 9 • 2:00 pm



Sat., May 10 • 7:00 pm
Sun., May 11 • 2:00 pm

FRANCO CENTER • LEWISTON

For tickets call 207-333-3386 or visit mainemusicsociety.org

25 It's our
25th
anniversary!



Sept. 6 and 7 Best of Broadway kicks off our 25th anniversary with the biggest hits of favorite Broadway shows presented by exceptional local performers. Performance Hall show with reserved seating. A special RSVP pre-show reception from 5 to 6 p.m. in Heritage Hall before the Saturday, Sept. 7 show only.



Sept. 12, Dec. 12, March 13, June 19 La Rencontre. Diverse cultures, performing arts, and languages come together. Meal and various types of entertainment.



Sept. 26 Wine Tasting with Edmond. Several wines of the summer will be tasted and served with appetizers. Edmond Gay will discuss an appreciation of pairing food and wine and how to drink wine. 5:30-7:30 p.m.



Oct. 12 Crystal Vision. There are many Fleetwood Mac cover bands across the country and around the world, but Crystal Vision's particular claim to fame is the resemblance of the three primary vocals to the originals.

Oct. 27 Fiddle-icious is a community-based orchestra of whose members are determined to preserve the cultural heritage of Maine's traditional fiddle music, dances, and songs passed down from Scottish, Irish, Quebecois, and Acadian ancestors.



Nov. 9 Murder mystery dinner party! Featuring the cast of Mystery207 where you'll witness and participate in fun skits and check out physical evidence. This drives the mystery and creates mini-goals to accomplish throughout the night.



Dec. 20, 21, 22 Sights & Sounds of Christmas! More than 30 performers will sing, dance, act, and produce an energetic and vibrant festive Christmas show complete with an immersive light show directed by Jake Hodgin. Bring the Christmas spirit home with you!



Feb. 8 Dueling Pianos. Two pianists will play songs from a variety of genres simultaneously on two pianos. The pianists take requests from the audience and make the show interactive.

Visit our website for our
event calendar!
Schedule a tour or
Escape Room adventure!
Rent our building!

Box office 207-689-2000
46 Cedar Street, Lewiston
www.francocenter.org



Supporting the Arts

THE CHAMPOUX GROUP

CHAMPOUX • PEOPLES • PINKHAM • ROGERS
I N S U R A N C E

Personal • Business • Bonding...

...Your Security Is Our Main Concern!

www.MaineInsuranceOnline.com

**You're more than a member -
you're *family*.**

Become a member today and discover the Maine Family difference!



Maine Family
Federal Credit Union

Experience the Feeling of Family

207-783-2071
www.mainefamilyfcu.com

555 Sabattus Street | 831 Minot Avenue
Lewiston, ME 04240 | Auburn, ME 04210

FEDERALLY INSURED BY NCUA

Jared Morneau Photography



WEDDINGS - LIVE PERFORMANCE - PORTRAITS

JAREDMORNEAU.COM
JAREDMORNEAU@GMAIL.COM



Lisa Laliberte, Agent

224 Russell Street
Lewiston, ME 04240
Bus: 207-783-3332
lisa.laliberte.gqph@statefarm.com



**Drama belongs on
the stage, not in
your finances.**



DIRIGO

FEDERAL CREDIT UNION

www.dirigofcu.com

1-800-281-5435

NCUA

**Dinner and a concert
in perfect harmony.**



150 MILL STREET, LEWISTON
WWW.DAVINCISEATERY.COM

Davinci's
EATERY • DRINKS

**Elemental Music
to Stir the Soul**



Rohan Smith, Music Director

Saturdays - 7 pm • Franco Center, Lewiston
Sundays - 2:30 pm • Orion Performing Arts Center, Topham

October 26 & 27, 2024

Courtney Bryan • W.A. Mozart • Jean Sibelius
Guest Soloists: Robert Lehmann Violin & Kim Lehmann, Viola

January 18 & 19, 2025

George Frederic Handel • Duke Ellington
Charles Ives • Bedrich Smetana • Henri Tomasi
Alan Hovhaness • Felix Mendelssohn
Pyotr Ilyich Tchaikovsky

Guest Soloist: Joshua Zhang, Trombone
Judith Elser Concerto Competition Winner
Guest Conductor Raffle Winner: Kyle Almquist

March 22 & 23, 2025

Franz Liszt • Robert Schumann
Samuel Coleridge-Taylor • Igor Stravinsky
Featuring Guest Conductor: Hiroya Miura

May 17 & 18, 2025

Coleridge-Taylor Perkinson • Joseph Haydn
Sergei Prokofiev



**MIDCOAST
SYMPHONY
ORCHESTRA**

For Tickets and more Information:

MidcoastSymphony.org

Box Office: (207) 481-0790

35th
ANNIVERSARY

BAXTER®

BREWING CO.

\$5 OFF YOUR BILL



Present this coupon with your
Performance! Playbill ticket
for \$5 off your next meal at
The Pub at Baxter!

CAN'T BE COMBINED WITH ANY OTHER
OFFER. NO CASH VALUE. CAN ONLY BE
APPLIED TO DINE-IN PURCHASE. NOT
VALID FOR TAKEOUT, TO-GO BEER, OR
MERCHANDISE. LIMIT ONE PER CHECK.



Leary & DeTroy

ATTORNEYS AT LAW

- Workers Compensation
- Criminal Law
- Personal Injury
- Disability Discrimination

Justin W. Leary
Benjamin E. DeTroy

90 Main Street • Auburn
782-3275
www.LearyandDeTroy.com
Free Initial Consultation



Learn your rights and obtain experienced, effective legal representation



Your Agency on Aging

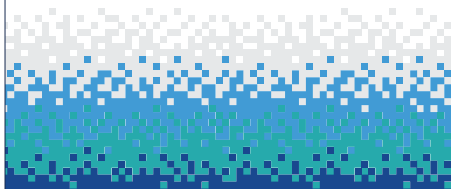
*Serving Androscoggin, Oxford,
and Franklin Counties*

**We're your
trusted source for
information, options,
and services designed
to meet your needs.**

**8 Falcon Road, Lewiston
www.seniorsplus.org
1-800-427-1241**

AUBURN Savings

A Bank That Always
Puts You Center Stage.



AUBURN
256 Court Street
(207) 782-6871

LEWISTON
325 Sabattus Street
(207) 782-0400

Bank on **us.** www.auburnsavings.com

*Good Health to you
and the Planet too!*

*Serving Maine
Since 1970*

AXIS NATURAL FOODS

120 Center Street Plaza
Auburn, Maine 04210
(207) 782-3348
axisnaturalfoods.com

Natural & Organic Foods • Vitamins • Herbal Products
Books • Body Care • Organic Produce

A Maine Pioneer in Organic Farming...

Earth Day Every Day!
Organic Wine and Beer • Home Brewing • Gluten Free Items
Organic Produce • Monthly Specials

OUELLETTE & ASSOCIATES, P.A.

CERTIFIED PUBLIC ACCOUNTANTS

1111 Lisbon Street
Lewiston, Maine 04240
(207) 786-0328 • Fax (207) 783-9377
www.oacpas.net

- Accounting
- Auditing
- Tax Services
- Bookkeeping Services
- Consulting Services
- Business Valuation

STUDIO 88 MUSIC SCHOOL

SUZUKI TALENT EDUCATION • PIANO AND VIOLIN



Rachel Eastman Feeley
Martha Gail Feeley

Studio88music@aol.com
207-344-9145



If

YOU LOOK CLOSELY

you'll see

the Arts
change
everything.



Rinck

113 Lisbon Street
Lewiston, Maine 04240
(207) 755-9470
www.rinckadvertising.com



132 Lincoln St.
Lewiston, Maine 04240
(207) 783-8593

130 Western Ave.
South Portland, Maine 04106
(207) 775-5381

www.fxmarcotte.com



FISH BONES



Join us before the show at
FISH BONES GRILL
70 LINCOLN ST., LEWISTON, ME
(207) 333-3663 | www.fishbonesgrill.com

Hours: Lunch & Dinner, Tuesday - Friday from 11:30 AM
Dinner only on Saturday at 4:00 PM

Roopers

EST. 1982

CHEERS!

ENTER A
WORLD OF
CELEBRATION,
ENTERTAINMENT
& COCKTAILS



Visit Us

AUBURN

301 Main Street, Auburn | 783.9098
545 Minot Ave, Auburn | 783.2047

LEWISTON

794 Sabattus Street, Lewiston | 783.6353
686 Main Street, Lewiston | 344.1200
1420 Lisbon Street, Lewiston | 333.3095

OXFORD

980 Main Street, Oxford | 539.6072

ROOPERSBEVERAGE.COM



The Public Theatre was founded to bring high quality professional theatre to the people of Maine, at an affordable price. We strive to make our presentations accessible to all, especially those less likely by tradition or inclination to attend live theatre. In choosing our season, we look for plays that speak from the heart; that are life-affirming and uplifting even when the subject matter is dark or painful; that use our language in powerful and provocative ways; that invite the audience to see their world in a new way. Artistic excellence is central to the mission of The Public Theatre.

The Public Theatre is a member of Theatre Communications Group (TCG), the national organization for the American theatre.

Board of Directors

Kari Grant-Gagnon.....	President
Jennifer Malloy	Vice President/Secretary
Thomas H. Platz.....	Treasurer
Deana Albert	Heidi McCarthy
Peter Kowalski	Charles Morrison

Staff

Ray Dumont	Executive Director
Janet Mitchko	Artistic Director
Carol Ham.....	Business Manager
Jennifer Madigan.....	Asst. Director Marketing/Development
Adam P. Blais	Production Mgr. /Artistic Associate
Anna Sullivan.....	Technical Director
Kathy Lawrence, Reen Robillard	Box Office Staff
Brandon Chaloux.....	House Manager
Kristen Thomas.....	House Manager
Aaron Louque	Concession Manager

THE PUBLIC THEATRE takes pride in recognizing our season sponsors. We seek to develop a partnership with local businesses working together for the enrichment of the Lewiston-Auburn area. The following businesses have joined us in this partnership. If you would like to see your company listed here, please contact us regarding sponsorship opportunities.

SEASON UNDERWRITERS

Platz Associates
Sun Journal
WOXO 92.7 & WIGY 105.5/95.7

Morton-Kelley Charitable Trust
The Shubert Foundation

CORPORATE SHOW SPONSORS

Androscoggin Bank
Andwell Health Partners
Auburn Manufacturing
Austin Associates, CPA
Baxter Brewing, Co.
Berube's Complete Auto Care
Butler Bros.
Cross Insurance
Dirigo Federal Credit Union
Evergreen Subaru

I.B.E.W Local 567
LA Metro Magazine
Lee Auto Malls
Maine Public
NAPA Coastal Auto Parts
Norway Savings Bank
O'Reilly Auto Parts
Turner Publishing, Inc.
Twin City Times
Warp + Weft

EDUCATIONAL UNDERWRITERS

Austin Associates, CPA
Cross Insurance
Helen & George Ladd Charitable Corp.

Margaret E. Burnham Charitable Trust
Onion Foundation
Turner Publishing, Inc.

EDUCATION PARTNERS

Carrabassett Coffee Company
Lewiston-Auburn Children's Foundation

Liberty Mutual Insurance
Penmor Lithographers

SEASON SUPPORTERS

Auburn-Lewiston YMCA
Evergreen Custom Printing
The Fortin & Pinette Group*
Lisa Laliberte State Farm Insurance*

Roy I. Snow, Inc.
Sherwin-Williams
YMCA of Central Maine
****performance sponsors***

GRANT SUPPORT

Maine Arts Commission - *an independent
state agency supported by the NEA*

Maine Community Foundation
-Maine Theater Fund

Dracula: A Comedy of Terrors
Eternal Rest Sponsor

The Fortin & Pinette Group



Presents

DRACULA

A COMEDY OF TERRORS

by Gordon Greenberg & Steve Rosen

Directed by
Janet Mitchko

Stage Manager
Adam P. Blais*

Lighting Design
Matthew Brian Cost

Set Design
Michael Reidy

Sound Design
Charles Coes

Costume Design
Kevin Hutchins

Props Fabricator
Duck Bracey

CAST

Actor One (*Jonathan Harker*)..... Ian Gould*
Actor Two (*Dr. Westfeldt*) Mark S. Cartier*
Actor Three (*Lucy Westfeldt*)..... Jessica DiGiovanni*
Actor Four (*Mina Westfeldt/Dr. Van Helsing*) Kevin Cristaldi*
Actor Five (*Dracula*) Luke Sholl*

Dracula: A Comedy of Terrors is presented by arrangement with Concord Theatricals on behalf of Samuel French, Inc. www.concordtheatricals.com

Dracula: A Comedy of Terrors was commissioned and originally produced by
Maltz Jupiter Theater
Andrew Kato, Producing Artistic Director/Chief Executive



* Member of Actors' Equity Association, the union of professional actors and stage managers in the United States.

Dracula: A Comedy of Terrors is Sponsored by

ENJOY THE SHOW



AUSTIN ASSOCIATES
CERTIFIED PUBLIC ACCOUNTANTS

AUSTIN ASSOCIATES, P.A.
AUBURN-NORWAY-SKOWHEGAN

where trust meets excellence.

Dracula: A Comedy of Terrors is Sponsored by

BERUBE'S



Complete Auto Care

147 East Ave, Lewiston, ME | 207.782.1125
berubesaautocare.com

Owned and Operated by a Maine
Family that Cares



COASTAL AUTO PARTS

- EST. 1981 -

29 locations from Gray to Caribou
capnapa.com

Offering the best combination
of price, quality and service.



21 locations in Maine
oreillyauto.com

Dracula: A Comedy of Terrors is Sponsored by



**GET THE LATEST
COPIES FIRST!**



**DELIVERED AT
YOUR DOOR.**

*IS THERE SOMEONE YOU KNOW ENJOY OUR PUBLICATIONS AND
WOULD LOVE GETTING THE FIRST LOOK AT EVERY ISSUE?
GIVE THE GIFT THEY CAN ENJOY ALL YEAR LONG.*

SUBSCRIPTIONS AVAILABLE AT



LAMETROMAGAZINE.COM



UNCLEANDYS.COM



**Have you listened
to our podcast?**

Want to be a guest or advertise?

Contact Pam Ashby 207.783.7039 or pam@lydiamediallc.com



2 Great Falls Plaza, Suite 1B, Auburn | 207-783-7039 | LydiaMediaLLC.com



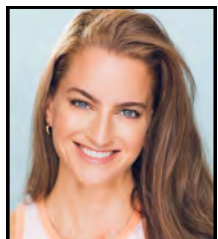
IAN GOULD (*Actor One: Jonathan Harker*) happily makes his debut at The Public Theatre. Off-Broadway credits include *Henry IV*, *Romeo and Juliet*, *A Midsummer Night's Dream*, *The Winter's Tale*, and *Measure for Measure* with New York Classical Theatre where he is an Artistic Associate; Guildenstern in *Rosencrantz and Guildenstern Are Dead*, *Hamlet*, *Macbeth*, *A Connecticut Yankee...with The*

Acting Company, and the title role in *The Show-Off* with Peccadillo Theatre Company. Regional appearances include the Guthrie Theater, Shakespeare on the Sound, Shakespeare Theatre of New Jersey, Baltimore Center Stage, Idaho Shakespeare Festival, Lake Tahoe Shakespeare Festival, Great Lakes Theater, Luna Stage. International: *Shooter* (Theatre Konstanz, Germany/TAK, Liechtenstein). Podcasts: *Love's Labour's Lost* (International Shakespeare Center), *The Winter's Tale* (Play On Shakespeare). Film: *Off Book*. Training: MFA, Shakespeare Theatre Company Academy, BFA, NYU/Tisch. Proud member of Actors' Equity Association.



MARK S. CARTIER (*Actor Two: Dr. Westfeldt*) has had the good fortune to play Marley/Cratchet, et al in Christopher Schario's adaptation of *A Christmas Carol* for three seasons. Also at The Public Theatre, he has appeared in *Things My Mother Taught Me* in 2018, and *Lost in Yonkers* way back in 1997. That same year, he began working at the Theater at Monmouth, where he has now been a company member for over 25 years. He has also appeared

in several productions at the Penobscot Theatre in Bangor, Maine. Since 2020, Mark has spent most of each year working as a standardized patient at various Boston medical schools, helping to train future doctors and nurses. He lives in West Bridgewater, Massachusetts with his wife Jane.



JESSICA DIGIOVANNI (*Actor Three: Lucy Westfeldt*) is thrilled to be back at The Public! Select Off-Broadway: *Seared* (MCC), *Close Up Space* (MTC), *Of Good Stock* (MTC), *Jasper* (Signature Theatre), *Bike America* (Ma-Yi Theatre Co.), *Training Wisteria* (Cherry Lane Theatre), *Terms of Endearment* (59E59), *A Better Place* (The Duke). Regional: *Time Stands Still* (The Public Theatre of Maine – Broadway World Nom.), *Paint Night* (The Public Theatre of

Maine), *Screwball Comedy* (The Public Theatre of Maine), *Bike America* (The Alliance Theatre), *The Fox on the Fairway* (Flat Rock Playhouse). Select Film & TV: *The Other Two* (HBO Max), *Feud: Capote vs. the Swans* (FX/HULU), *Forever* (ABC), *Powerbook II: Ghost* (Starz), *Twenty Five* (Indie Series Awards Nom. – Best Supporting Actress in a Comedy), *The Narcissists*, *The Resort* (Best Actress – Ziiff). Jessica's voice can also be heard in multiple commercials nationwide and as the Transformers, Windblade and Arcee. Training: Fordham University at Lincoln Center, Moscow Art Theatre (MXAT) and LAMDA. Thank you Janet

and Christopher for thinking I'm funny. Thank you to the love of my life Mike (whom I met doing a show at this very theatre - Thanks Janet!), my CT family and my Chicago family. Grateful beyond words for all your love and support. [@thejessdigi](http://jessicadigiovanni.com)



KEVIN CRISTALDI (Actor Four: *Mina Westfeldt/Dr. Van Helsing*) is pleased to be making his debut with The Public Theatre! OFF-BROADWAY: *A Peregrine Falls* (Loading Dock), *(A)loft Modulation* (american vicarious), *A Midsummer Night's Dream* (Masterworks), and *A Dish for the Gods* (The Lion Theatre). REGIONAL: *To Kill a Mockingbird*, *The West End*, and *Christmas Carol* at Cincinnati Playhouse; *When I Come to Die* at Kansas City Rep; *The Outsider* and *The*

Exonerated at Florida Studio Theatre; *Curse of the Starving Class* at Hudson Theatre Works; as well as productions at Cape May Stage, Schoolhouse Theatre, Vermont Stage, Two Rivers Theatre, Arden Theatre Philadelphia, and Hartford Stage. FILM: *Can You Ever Forgive Me?* TV: *Succession*, *The Blacklist*, *Gilmore Girls*, *Criminal Minds*, *Medium*, *The Unit*, *Numbers*, *Buffy the Vampire Slayer*. www.KevinCristaldi.com



LUKE SHOLL (Actor Five: *Dracula*) is thrilled to be joining The Public Theatre as Dracula! A Native Maineiac, Luke grew up in Kennebunk, where he first felt undead in high school plays. Later, he took a bite out of the Big Apple and entered the acting program at Marymount Manhattan College, appearing in Mainstage productions of *The Adding Machine* and *Rhinoceros*. Luke sank his teeth into improv and sketch comedy at The Upright Citizens Brigade (UCB)

and Magnet Theatre. He became a regular cast member at CollegeHumor.com appearing in 100 viral sketch comedy videos, including the hit web series, *Very Mary-Kate*, starring as Bodyguard. Eventually, Luke sold his soul and moved to Hollywood to continue working on camera. TV credits include: *Adam Ruins Everything*, *NCIS: Los Angeles*, and *The Pete Holmes Show*. Film: *Other People*, with Jesse Plemons, and the recently wrapped indie feature, *The Big Break* where he stars as Charlie. Luke currently lives in Atlanta, Georgia. When he's not acting, Luke is a personal trainer and eats an unholy amount of bloody steak. Luke would like to thank his family, his high school drama teacher Mrs. Valerie Reid, his agent Kate, and God. Instagram: @LukeSholl

GORDON GREENBERG & STEVE ROSEN (Playwrights) are a writing team in New York. Their 5-actor comedy of Bram Stoker's *Dracula*, *Dracula: A Comedy of Terrors*, has received rave reviews Off-Broadway at New World Stages. The play received great reviews in The New York Sun and Forbes Magazine. **Gordon Greenberg** has directed on Broadway, Off-Broadway, in

London's West end, written for television and stage, and developed, directed and produced new works for arts institutions across America. As an actor, he has appeared on Broadway, Off-Broadway and on television. **Steve Rosen** was one of the co-creators, writers and hosts for the comedy improv show *Don't Quit Your Night Job*, which began at Joe's Pub in downtown NYC. As an actor, Steve has worked extensively on stage and screen. He plays recurring roles on *NBC's Law and Order: SVU*.



JANET MITCHKO (*Artistic Director*) As Artistic Director, Janet has spent her past 30 years at the helm of The Public Theatre with her now retired artistic partner Christopher Schario building a professional theatre into the lifeblood of L/A. During her tenure here, she has worn many multi-hyphenate hats including directing 30 years of productions (*Lunenburg, Incident at Our Lady of Perpetual Help, Paint Night, Morning After Grace, Sexy Laundry, Hound of the Baskervilles, Around The World in 80 Days*, among others). Prior to life in Maine, Janet lived in NYC earning her living as a professional actress, voice-over talent, and director as well as teaching acting at The American Academy of Dramatic Arts. Although she proudly holds a degree in Acting from Carnegie-Mellon University, her favorite role will always be the mother of (bside.beehiiv.com creator) Emily Schario.



RAY DUMONT (*Executive Director*) is overjoyed to come back to his hometown as Executive Director of The Public Theatre. He grew up in Lewiston and was educated in Lewiston schools. Most recently he was Director of Development for Theatre Aspen, after two years as Associate Education Director at the Ogunquit Playhouse. He attended Boston University School of Management, where he majored in Finance and Marketing. Ray has been working in professional theatre for over 30 years, as performer, educator, director, choreographer, and administrator. Although his career has taken him all over the country, Maine has always been his home base. He has enjoyed over 20 seasons at Maine State Music Theatre, including four incredible years as Managing Director from 1999-2003. During those years, MSMT refurbished a former bus garage into its current production and administrative home in Brunswick. Ray is dedicated to creating art that starts conversations, brings people together, and improves the quality of life in our communities, all the while providing great entertainment, here in Lewiston/Auburn. He is forever grateful for the support of his amazing family, all of whom reside in Maine, and for the daily encouragement of his partner, Josh. Proud member of AEA (Actors' Equity Association) since 1995.

ADAM P. BLAIS (*Stage Manager*) is a Maine-based Director, Choreographer, Stage Manager and Educator. Previously at The Public Theatre: *Lunenburg, Incident at Our Lady of Perpetual Help, Paint Night* (Stage Manager), *Polkadots: The Cool Kids Musical, Murder for Two* (Director/Choreographer), *Dancing Lessons*, The Midvale High School 50th Reunion (Choreographer). Additional credits include *Always...Patsy Cline, Souvenir, Cox And Box, The Story of My Life, A Midsummer Night's Dream, Daddy Long Legs, Murder for Two, The Pirates of Penzance* (Theater at Monmouth); *King Lear, The Tempest* with Academy Award Winner Olympia Dukakis (Shakespeare & Company); *Sweeney Todd, Speech and Debate* (University of Maine), and many others. Adam holds a BA in Theatre and an MA in Leadership Studies and is also the Production Manager and Artistic Associate at The Public Theatre. Proud member of Actor's Equity Association.

MICHAEL REIDY (*Set Designer*) Previous design work for the Public Theatre includes scenery for *Fiction, Rough Crossing, Marvin's Room, All in the Timing, Betrayal, The Old Settler, Enchanted April, The 13th of Paris and Magnetic North*, and lighting for *Middletown, Deathtrap*, and *The Nerd*. Other theaters Michael has designed for include: Tennessee Repertory Theater, Portland Stage, Worcester Foothills Theater, Ram Island Dance, Santa Rosa Repertory, Bigfork Summer Playhouse, Opera Maine, Maine State Music Theatre, Theater at Monmouth. For Mad Horse Theater, Michael designed acclaimed productions of *One Flew Over the Cuckoo's Nest, King Lear*, and *Hamlet*. Michael's corporate and not-for-profit clients have included Time-Warner, Cole-Haan, Children's Museum of Maine, LL Bean and the Salem Witch Museum. Working with Transformit, Gorham Maine, Michael designed tension fabric structures as touring sets for The Dave Matthews Band and ZZ Top. Michael collaborated with the late performance artist William Pope.L as a consultant and art fabricator on several projects, including *Blackula, Chocolate Fountain, A Personal History On Videotape*. Other interesting projects include lighting design for *Mill Town*, an immersive dance experience set in the Bates Mill, choreographed by Stephan Koplowitz and produced by the Bates Dance Festival summer 2017; and Creative Director for *re:past a memorial for Malaga*, curated by Myron Beasley, summer 2018. Michael is a Senior Lecturer for Bates Dept. of Theater and Dance, currently on leave.

KEVIN HUTCHINS (*Costume Designer*) is excited to be returning to the Public Theatre! He has worked as a costume designer for many years, all over New England. He is on the University of Southern Maine Theatre Department faculty as the Costume Director/Professor; he holds an MFA in Costume Design from Boston University and a BFA in Musical Theater from The Boston Conservatory at Berklee. Kevin has costume designed for many theater companies, including The Ogunquit Playhouse, Wheelock Family Theatre, Greater Boston Stage Company, The CIC Theater Company, and Boston Playwright's Theater. In addition, Kevin was a founding member of the

CIC Theater Company and served as the Production Manager and Resident Costume Designer for over five years, bringing theater and theater education to Boston's underserved youth. Previous Public Theatre design credits include *The Secret Hour*. <https://kevinhutchins.myportfolio.com>

ISABELLE EMERSON (*Assistant Costume Designer*) is a senior Theatre student at the University of Southern Maine with a concentration in design and stage management. As a lifelong Southern Maine resident, Isabelle is thrilled to have found a place for her creative exploration to thrive within the local theatre community. Her previous work on shows at USM includes assistant stage managing *The Prom* and costume design for *Too Much Light Makes The Baby Go Blind*. Outside of work and school Isabelle enjoys hiking, spending time with friends and family, and rhinestoning. *Dracula: A Comedy of Terrors* is her first show with The Public Theatre.

DUCK BRACEY (they/she/he) (*Props Fabricator*) is a props director, designer, and general live art collaborator. They hold an M.F.A. in Props Technology from Ohio University, and they now get to travel the country spreading the motto "making theater should be fun." Their work can be most recently seen at the *American Shakespeare Center* (props designer), *Maine State Music Theatre* (props carpenter/assistant props manager), and touring with *Starquest Dance Competitions* (video jockey/console operator). A special yeehaw to all of my fellow props pals out there.

MATTHEW BRIAN COST (*Lighting Designer*) has been designing lights for theater, dance, music and more for the last twenty-five years, from his alma mater Colby College to greater New England and beyond. Previous designs at The Public Theatre have included *Secret Hour* and *Pilgrims Musa and Sheri in the New World*. Other select recent credits include *Once On This Island* at Revere High School, *The Addams Family* at Pinkerton Academy, and BoSoma Dance Company's 20th Anniversary show at the Boston Center for the Arts. Matthew lives in East Weymouth, MA with his wife Abby, son Simon and pitbull Roadie.

CHARLES COES (*Sound Design*) New York: *Comedy of Errors* (Public Mobile Unit), *Beautiful Lady* (La Mama), *Golden Shield* (MTC), *Letters of Suresh* (Second Stage), *Small World Stories* (Phantom Limb), *Sing Street* (NYTW), *Natural Shocks* (WP). Tour: *Jitney*, *Into the Woods*, *Peter and the Starcatcher*. Regional: Arena, Huntington, Rep Theater of St Louis, Baltimore Center Stage, OSF, and others. Homer's Coat's productions of *An Iliad* and *Song of Rome*. Broadway Associate including *Girl from the North Country*, *To Kill a Mockingbird*, *Junk*, and *Peter and the Starcatcher*.

ANNA SULLIVAN (*Technical Director*) Having recently graduated with her B.A. in Theatre Arts from Gordon College, *Dracula* is Anna's first show as TD at the Public Theatre! While in school, Anna was introduced to the world of

Scenic Carpentry and Technical Direction, and (apparently) just couldn't get enough! While there, she worked on shows such as Kate Hamill's *Little Women* (TD) , *Godspell* (Master Carpenter) , *The Fantasticks* (Carpenter) , *Steel Magnolias* (Carpenter), and more. It is her greatest joy to work collaboratively with others, serving the story of a show in such a way that audience, cast, and crew can experience vibrant and creative community together. She would like to express endless thanks to the folks here at The Public for being so warm and welcoming. Most especially, she wants to thank her husband Corey for willingly putting up with her constant overflow of sawdust, screws, and drill bits, as well as unquestioningly supporting her sudden mysterious obsession with all things pulleys and power transmission systems.

CAROLINE JUDD (*Intern/Asst. Stage Manager*) fell in love with theatre in her middle school years and has been pursuing stage management and technical work ever since. She recently graduated with a Theatre Arts degree from Gordon College and is thrilled to be starting her official career at The Public Theatre. Previous credits include stage management and technician roles in New York City and Erie, Pennsylvania. She is very thankful for the team at The Public Theatre and the opportunity to work with and learn from them!



ACTORS' EQUITY ASSOCIATION was founded in 1913 to protect Actors from the severe mistreatment that permeated the industry at that time. Since its inception Equity has had only nineteen Presidents. Its current President is Brooke Shields. The Association consists of over 51,000 distinguished stars and other professional Actors and Stage Managers who work nationwide, from

New York's Broadway to Los Angeles, from Minneapolis to Miami Beach, in regional, stock and dinner theatre, and in theatres for young audiences which build the audiences of tomorrow. These Actors and Stage Managers are committed to working in the theatre as a profession, not an avocation, and bring to you the finest professional training and experience. By presenting Equity productions, this theatre offers to you, our audience, the best entertainment presented by the finest quality Actors and Stage Managers that your admission dollars can buy.

We are looking for volunteers

Posters • Mailings • Ushers

**Inquire at the Box Office if you are interested
or call 782-2211**

2024-25 Specialty Sponsorships

Without scenery, lights, costumes, and sound, our actors are performing on an empty stage, in their street clothes, in the dark. Without even a cricket chirping in the background. **Please recognize the following companies that are helping make sure you get a vibrant and full live-theatre experience.**

Setting the Stage
Hebert Construction

Light Up the Stage
DeBlois Electric

Dress Them Up
Your Business Here!

Loud and Clear
Alice's Awesome Adventures

2024-25 Season Underwriters



Two Great Falls Plaza
Auburn, ME 04210

207-784-2941
platzassociates.com

Sun Journal

Connecting you with your community
sunjournal.com



MAKE A DONATION TODAY

Contributions are the cornerstone of a not-for-profit theatre. You can join our list of donors with just a few taps on your phone. There are many easy ways to support The Public Theatre. Of course, checks and cash are always welcome, too!

Use your browser to donate
using PayPal or any credit card.



The Public Theatre's Assisted
Listening System
was funded in part by
Dr. & Mrs. Ben Lounsbury
and a grant from the
Maine Arts Commission,
an independent state agency
supported by the
National Endowment for the Arts.



We are pleased to offer
hearing assistance free of
charge to help patrons
with hearing difficulties
enjoy our productions to their
fullest, no matter where they are
seated in the Theater. We are using
a system which transmits an FM
signal to a personal receiver outfitted
with lightweight headphones, or neck-
loop for hearing aids equipped with a
T-coil. Please inquire at the Box
Office for more information.



Special Thanks

Blessing Ajayi
Florence Cooley
Lewiston Technical Center

Zi Li
Mark Vigue

A huge thank you to all of our wonderful
poster people and ushers
who are too numerous to name.
We couldn't do what we do without YOU!

INDIVIDUAL DONORS

Contributions are the cornerstone of a not-for-profit theatre. Ticket sales generate less than 40% of our income. We thank the following individuals who have supported The Public Theatre with their generous financial contributions. **If you would like to join our Individual Donors, please call 782-2211.**

Star (\$1000+)

Maury & Joseph Bohan
Althea Croxford & Phil Blake
Gillian Ehrich
Vivianne Holmes
Philip & Susan Morgan
Sheri Olstein
Tom Platz & Paula Marcus-Platz*
Margo & Jack Simmons
Charles Thomas
Cheryl Van Messel & Charles Bross
Edward Walworth*
Robert & Susan Weiss*

Producer (\$500-\$999)

Janette Austin
Susan & Jeffrey Brown
Martha Corey
Gregory & Jane D'Augustine
Gretchen & Jerry Davis
Phyllis Deringis
Bill & Cynthia DeSoy
Ken & Melinda Emerson
Rob Fast
Anonymous
James & Julie Jackson
Ben & Bonnie Lounsbury*
Elaine Makas
Barbara & Lanny Oliver
William Phillips
Deborah Savadge
Daniel & Debra Snow

Director (\$250-\$499)

Jody Andersson
Paul & Nina Baril
Alice Bean Andrenyak
Gail Sylvester
Gene & Ellen Benner
Janet & Fred Bishop
Linda Bishop
Ronald & Donna Bissonnette
John & Doris Bonneau
Nancy Griffin & Tom Boyer
Jonathan Bradshaw
M. Elaine Briggs
Margaret Burroughs
Gail Carville & Peter Kowalski
Deborah Chandler
Christina Moylan & Thomas Knowlton
Rae Clark-McGrath
Sally Clifford
The Cote Corporation
Ellen Crawford & Mike Genovese
Peter Crosby
Robert Spivey & Marian Dalton

Phillip Davis
Rick & Barbara Diamond
Olga Dolgicer
Abigail Douglas
Grace & Lydia Drown
Bruce Edwards
Alice Faucher
Raymond & Elinor Fogg
James & Candace Platz
Katherine Garren
Lynda & Richard Giard
Rhonda Gioia
Kathy Gleason
Greg Glovach & Joan Kelly
Bruce Grant
Donald Grant
Bob Grieshaber
Roberta Guillory
Merna Guttentag
Allan & Libby Harville
Judith Head & Michael Jones
Connie Hitchcock
David & Cori Holt
Janet & Michael Joseph
James Kearney & Carol Rice
Lee & Ingrid Kendall
Raymond & Susan Lagueux
Mary & Beth Levesque
Suzanne Luening
Virginia Marczak
Pam & Michael Matzinger
Joseph McGovern
Joanne & Andrew McKee
Nancy & Stephen Mennealy
C.J. Mitschele
Keith & Cynthia Morgan
Paul & Kathy Moriarty
Dennis & Janet O'Neil
David & Joel Oshansky
Debra & Craig Phillips
Margaret Schick & Jeffrey Pinnette
Barbara Howard & Nick Poulton
Kenneth & Grace Reed
Douglas Rees
Luanne Rhoades
Martha Richardson
Carolyn Robertson
Carol & Craig Robinson
Bruce Rood
Pat & Steve Sawyer
Susie & Bob Sharp
Alison Smith
Mary Snell
Patricia Snyder
Sharon & David Staszak
Jeffrey Sturgis

Christine Swain
Kristin G Sweeney
Wendy Tardif
Stan & Cathy Tetenman
Bette J. Swett Thibeault
Anonymous
Cecile Thornton
Susan & Elwood Trask
Adriann Tucker
Craig Urquhart
Shawn Walker
David Blocher & Helen Warren
Anne Weatherbee
Ann Weiss
Richard & Bridget Whiting
Liz Wilson

Stage Manager (\$50-\$99)

Edward Barrett & Nancy Orr
Deana & Ken Albert
Tony & Marcia Augello
Ed & Cheryl Avis
Nancy Babcock & David Walker
Denis & Sharon Philbrook
Bergeron
Jennifer Black
Brenda Boothby
Bruce & Kathleen Boynton
Lisa Brochu
Curtis Brown
Judy Brown
Anne Burg
Cheryl Burns
Ed & Louise M Buschmann
Constance Cardamone
Steven & Marilyn Closson
Barbara Connell
Brian & Linda Conroy
Holly Cooney
James Crary & Pamela Gross
Susan Craves
Suzanne Crowell
Rachel Cyr
Alvin Da-Costa
Cara David
Joanne Desormiers
Kathleen Dietrich
Carolyn Downing
Penny Drumm
Elaine & Richard Dubois
Mercedes Dumont
David & Jane Erickson
Patricia & Bob Faunce
William Fuller
Christos & Christine Gianopoulos
Kimberly Golden

*** Denotes Theatre Founder**

Evelyn Greenlaw
 Rosemarie Groleau
 Jody Harris
 Ann Hartzler
 Gary & Melanie Hatfield
 Lucille Hawley
 Meineke Car Care Center
 Stephen Jacobs
 Lincoln & Bridget Jeffers
 Camilla & Tony Lampron
 Jerryanne LaPerrière
 Sarah Lawrence
 Marie LeBlanc
 Joan & Richard Legendre
 Robin LaPlace & James Lewis
 Mary & Peter Longley
 Mary & Vincent Louque
 Stephen & Irene MacDougall
 Connie Machan
 Nicholas Mackiewicz
 Diane Maheux
 Betty McCall
 Vince & Joanne McDermott
 Sheila McGarr
 Robert & Cynthia McGuire
 Lee Morin
 Arlene Morris & Steve Stern
 Earl & Joanne Morse
 Linda Neal
 Lisa O'Brien
 Maureen M. O'Brien
 Kathleen O'Donnell
 Jerry Perry
 Stephen Petersen
 Meg Peterson
 Barry & Elizabeth Plummer
 Kim Relick
 Quimby & Mitzi Robinson
 Mark Routhier
 Suzanne Roy
 David Scribner
 Larry Whittington & Karen Shumac
 Robert & Elly Simard
 Joanne Smith
 Zelda Smith
 Julie Spugnardi
 Gretchen Stanton
 Ann Thaxter
 Lisa Therrien
 Donna & Ralph Thivierge
 Sue Tymoczko
 Cornelia Viek

Crystal Ward
 Beth & Paul Whalon
 Elizabeth White
 Diane Whitmore
 Carole Zalucky

Supporting Actor (\$20-\$49)

Judy Abromson
 Debra Adams
 Terry Allen
 Pam Amrein
 Josephine Baker
 Judith H Blanchard
 Susan Boyd
 Michael Breton
 Eugene & Diane Brogan
 Aaron & Ellen Burke
 Sandra Carder
 Catherine & Kevin Carey
 Sandra Chamberlain
 Robert & Tookie Clifford
 Bruce & Whitney Condit
 Jacqueline Couillard
 Janel Danforth
 Jeanne David
 Dawn DeBerry
 Leo Delicata
 Becky Drew
 Michael Dixon
 Carol Duplessis
 Trudy Ellis
 Hannah Estes
 Lorraine Fitz
 Pauline & Denis Fortier
 Geiger Bros.
 Tim Gleason
 Susan Glines
 Susan & Kenneth Gordon
 Vickie Gould
 Bonnie Green
 Linda Hill
 William Hodgkins
 Mary Hogan
 Melody Hoover
 Jonathan Hopps
 Nan Hughes & Norman Rich
 Cynthia Hutchins
 Janet Isbell
 Susan Kane
 Cheryl King
 Rodney Kuhl
 Dee LaRochelle

Thomas & Claire Leonard
 Diane Letourneau
 Ellen Lord
 Kathleen Luz
 Doreen Maxwell
 Roger Mills
 Jane Mitchell
 Thomas & Mary Ellen Molokie
 Elijah Moore
 Cynthia Morgan
 Sandra Morrell Rooney
 Chip & Jane Morrison
 Debbie Nelson
 David Newer
 Karen Normandin
 Patricia O'Brien
 Anne Olivo
 Leon Parker
 Joan Pedersen
 Richard & Rose Pelletier
 Elizabeth Perreault
 Maureen Perry
 Cynthia Phinney
 Cecile Potvin
 Wendy Poutre
 Carl Prouty
 David & Michelle Reese
 Julia Reuter
 Jessica Rockwell
 Merrill Rollins
 Dotty Ryan
 David Sargent
 John Scherbarth
 Barbara & Michael Shapiro
 David & Julie Ann Shaw
 Claudette & Tom Shea
 Linda Snyder
 Elaine & Scott St. Pierre
 Susan Stiker
 Linda Stone
 Richard & Jackie Strong
 Susan Thornton & Michael Daley
 Joseph C. Varuolo
 Gary & Melissa Veilleux
 Margaret Volock
 Hailey Weber
 Patricia A. West
 John & Bette Woodbury
 Kathy Wyatt
 Elizabeth White
 Diane Whitmore

This list reflects donations of \$20 or more received through October 4, 2024

Enjoy a hot cup of coffee today!

CARRABASSETT
COFFEE COMPANY

Call Toll Free: 1-888-292-BEAN
carrabassetcoffee.com



Let us help you write **your** next chapter.



At Norway Savings Asset Management Group, it's not necessarily the size of your nest egg we care about — it's the story behind it. Your planning decisions are a reflection of your values and your future. They're about the choices you've made to get here, and your vision for what comes next. We take the responsibility of protecting your financial future incredibly seriously. We make sure your story lives on.

INVESTMENT MANAGEMENT • TRUST SERVICES
FINANCIAL ADVICE • ESTATE PLANNING

207.482.7920 | NorwaySavings.bank

Not FDIC Insured • No Bank Guarantee • May Lose Value



ASSET MANAGEMENT GROUP

For the **life** you choose.

**Commitment to Our Clients to Our
Cases and to Our Community**



**Skelton
Taintor
& Abbott**

ATTORNEYS AT LAW

Call
207.784.3200
or visit
sta-law.com

**500 Canal St.
Lewiston, ME**

**Courtesy, Quality and Service . . .
A Winning Combination
Since 1939**



Employee Owned

**Auburn • Lewiston • Augusta
Dixfield • Lisbon Falls
Topsham • Brunswick • Freeport**

Eat In, Carry Out, Event Catering

samsitalian.com

**Hammond
Lumber Company**



**Kitchen,
Bath & Flooring
Center**

A Division of Hammond Lumber Company

- ✓ **FRIENDLY AND PROFESSIONAL
SALES STAFF**
- ✓ **COMPLETE SHOWROOMS WITH
FUNCTIONING DISPLAYS**
- ✓ **FREE 3D DESIGN SERVICES
WITH PURCHASE OF MATERIALS**

**Revitalize the
Heart of your Home.**

22 LOCATIONS ACROSS MAINE & NEW HAMPSHIRE

**AUBURN • BANGOR • BAR HARBOR • BELFAST • BELGRADE • BLUE HILL • BOOTHBAY HARBOR • BRUNSWICK • BUCKSPORT
CALAIS • CAMDEN • CHERRYFIELD • DAMARISCOTTA • ELLSWORTH • FAIRFIELD • FARMINGTON • GREENVILLE
MACHIAS • PORTLAND • ROCHESTER (NH) • ROCKLAND • SKOWHEGAN**

WWW.HAMMONDLUMBER.COM

Business Listings

Andwell Health Partners 207-777-7740

Your partner in health, for life.
www.andwell.com

Austin Associates, P.A. 207-783-9111

Certified Public Accountants
Auburn • Norway • Skowhegan www.austinpa.com

Berman & Simmons, P.A. 207-784-3576

Personal Injury Trial Attorneys
Portland • Lewiston • Bangor
bermansimmons.com

Franklin Printing 207-778-4801

553 Wilton Road, Farmington, ME 04938 • Commercial printer - specializing
in offset, digital, wide format, mailings & folding cartons.
www.franklinprinting.com -- Let us help you print smarter.

Optometric Associates 207-784-3564

Home of Healthier Eyes
168 East Avenue, Lewiston, Maine 04240
www.optometricassociates.com

SeniorsPlus 207-795-4010

8 Falcon Rd, Lewiston, ME 04240 • Area Agency on Aging and your trusted
nonprofit resource for information and assistance.
www.seniorsplus.org

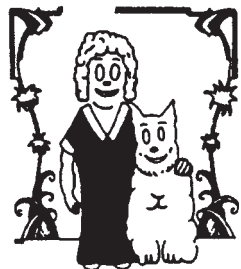
**Proceeds from advertisements in PERFORMANCE!
provide important support to the Arts in your
community. Contact us to advertise
in this playbill for 2025-26.**

Penny Drumm • 207.333.3386
penny.smartmanagement@gmail.com


**SmART
Management**

Orphan Annie's Antiques

*New England's largest selection of Art Deco and Art
Nouveau. Tiffany, Steuben, Gallé, and other prominent
French and American art glass. Furniture, lighting, and
vintage clothing. Large collection of estate and costume
jewelry. Wide selection of dinnerware, including Fiesta
and Depression glass. Featured in Down East, March '96.
Open Mon.-Sat., 10-5; Sun. 12-5. Three floor warehouse
sale every Monday 10:00 am - 1:00 pm at 110 Turner Street.*



**96 Court Street (across from the courthouse), Downtown Auburn • 207-782-0638
orantiques@myfairpoint.net • OrphanAnniesMe.net**

MAINE STATE MUSIC THEATRE 2025 SEASON!



MSMT
MAINE STATE MUSIC THEATRE
EST. 1989

Bringing Broadway to Brunswick

Tickets: msmt.org
207.725.8769

Optometric Associates

Home of Healthier Eyes

Douglas J. Henry, O.D., Ph.D.

Diplomate, American Board of Optometry

Stephen L. Ebersole, O.D.

Diplomate, American Board of Optometry

Abigail R. Carr, O.D.

- Comprehensive Eye Exams
- Over **1000** Fashion Frames In Stock with On-Site Lab for Fast Service
- Contact Lens Specialists
- **New** Dry Eye Center
- Eye Disease Treatment
- Laser Surgery Co-Management

Ask us about
**Lipiflow Dry
Eye Therapy**

**Prescription and
Non-Prescription
Sunglasses**



Serving L/A for
more than 60 Years

784-3564

168 East Ave., Lewiston

www.optometricassociates.com

E-mail: respond@optometricassociates.com



Medicare, Most Insurance
& CareCredit™ Accepted

Supporting the Arts for over 40 years



PLATZ ASSOCIATES

Since 1980

Architects • Engineers
Construction Managers

TWO GREAT FALLS PLAZA • AUBURN, MAINE • 64210 • 207 784 2941



DeBlois Electric, Inc.

ELECTRICAL CONTRACTOR • DESIGN BUILD

Building Lasting Relationships Since 1967

- Service • Small Projects • Generators • Smart Homes

www.debloiselectric.com

Lewiston, ME • 207-783-6512



Bank Where You Belong

1000 Lisbon Street
Lewiston, ME 04240

207-783-1475

www.centralmainecu.com

Blais Flowers

GIFT SHOP & GREEN HOUSE

539 Webster Street
Lewiston, Maine 04240
Phone: (207) 783-8566
www.blaisflowers.com

*Your florist
for every occasion.*

Emerson TOYOTA

990 Center St. Auburn, ME
emersontoyota.com (207) 784-1348

*“Where You Buy Is As Important
As What You Buy”*



Celebrating 56 Years in Central Maine
207.933.9999 | theateratmonmouth.org

We are **proud** to
support the arts
in our community.

As a local community bank we are committed to being a vital part of the communities we serve. We are committed to giving our customers the access and convenience they expect from a modern bank – without sacrificing the personal touch that has always defined us.

We're Maine Community Bank – on your corner and in your corner.

Contact us today!



MAINE
COMMUNITY BANK

207-786-5705

mainecb.com

MEMBER
FDIC



"The Original of Orono"
Auburn, Maine

Full-Service Family Restaurant
Dining Room and Take-Out Hours
11:00 AM - 9:00 PM Daily

Hot and Cold Sandwiches • Pizza
Pasta • Lunch • Dinner
Gift Certificates

85 Center Street • Auburn, Maine
207-784-8221



The Cote Corporation



- Crane & Rigging Services • Trucking • Millwright
- Machinery Moving • Warehousing
- Cranes up to 300 Ton Capacity
- Tip Height 361'

DEDICATED TO EXCELLENCE!

www.cotecrane.com • 800-696-6282

2980 Hotel Road, Auburn, ME 04210

Alphabetical Business Directory

Andwell Health Partners	A-2, C-3
Arts & Culture LA	Inside Back Cover
Austin Associates	C-3
Auburn Savings Bank	A-8
Axis Natural Foods	A-8
Bates Theatre & Dance	Inside Front Cover
Baxter Brewing & The Pub	A7
Berman & Simmons	A-2, C-3
Blais Flowers	C-6
Business Listings	C-3
Central Maine Credit Union	C-6
Champoux Group, The	A-5
Computer Place, Inc, The	C-10
Cote Corporation, The	C-8
DaVinci's	A-6
DeBlois Electric	C-6
Dirigo Federal Credit Union	A-6
Emerson Chevrolet Buick	C-10
Emerson Toyota	C-7
Fish Bones Grill	A-10
Franco Center, The	A-4
Franklin Printing	C-3
FX Marcotte	A-10
Hammond Lumber	C-2
Jared Morneau Photography	A-5
Leary & DeTroy	A-7
Lisa Laliberte State Farm Insurance	A-6
Maine Community Bank	C-8
Maine Family Federal Credit Union	A-5
Maine Music Society	A-3
Maine State Music Theatre	C-4
Midcoast Symphony Orchestra	A-6
Norway Savings Bank	C-1
Optometric Associates	C-3, C-5
Orphan Annie's	C-3
Ouellette & Associates	A-9

continued

Alphabetical Business Directory

Pat's Pizza	C-8
Penmor Lithographers	C-10
PERFORMANCE! AD SALES	C-3, C-10
Platz Associates	C-5
Public Theatre, The	A-1
Rinck Advertising	A-9
Roopers	A-10
Sam's Italian Foods, Inc	C-2
Schooner Estates	Back Cover
SeniorsPlus	A-8, C-3
Skelton Taintor & Abbott	C-2
Studio 88	A-9
Theater at Monmouth	C-7

EMERSON




CHEVROLET
BUICK®

946 Center St. • Auburn

emersonchevy.com

(207) 784-3503 • (800) 696-0766

Your ad in PERFORMANCE!
provides important support to
the Arts in your community.
Contact us to advertise
in this playbill for 2025-26.

Penny Drumm
 207.333.3386

penny.smartmanagement@gmail.com

Sm 
 Management

PENMOR
 LITHOGRAPHERS

MARKET YOUR BUSINESS
 with **HIGH-IMPACT** PRINT

Commercial Offset Printing
 Digital Small Run Printing
 Wide Format Signage Printing
 Mailing and Fulfillment Services
 Promotional Products
 Design and Layout Services

8 Lexington Street
 Lewiston, ME 04241
 207.784.1341 • 1.800.339.1341
 www.penmor.com




- NETWORKS
- SECURITY
- SALES
- REPAIR




"Honest Job. Honest Price"

t. 207.783.7232
 f. 207.783.7260

Weekdays 9AM – 5PM
 www.tcpme.com
 www.facebook.com/tcpme

1485 Lisbon Street
 Lewiston Maine 04240
 info@tcpme.com



Bates Dance Festival

17 Ways to HAVE FUN in L/A



Community Little Theatre

- **Androscoggin Historical Society** androhistory.org
- **Auburn Public Library** auburnpubliclibrary.org
- **Bates Dance Festival** batesdancefestival.org
- **Bates College Museum of Art** bates.edu/museum
- **Community Little Theatre** laclt.com
- **Franco-American Collection at USM** usm.maine.edu/franco-american-collection
- **Franco-Trail L/A**
- **Franco Center** francocenter.org
- **L/A Arts** laarts.org
- **Lewiston Public Library** lplonline.org
- **Maine Music Society** mainemusicsociety.org
- **Midcoast Symphony Orchestra** midcoastsymphony.org
- **Museum in the Streets trail** museumla.org
- **Maine MILL** mainemill.org
- **Olin Concert Series** bates.edu/olin-concert-series
- **The Public Theatre** thepublictheatre.org
- **The Public Art trail** laarts.org



The Public Theatre



*Flo Grenier
Schooner Estates
Tenant Since 2023*

*There's No
Place Like
Home...*



Schooner Estates
Senior Living Community

784-2900 • [SchoonerEstates.com](https://www.SchoonerEstates.com)

Supporting the Arts in L/A for more than 25 years